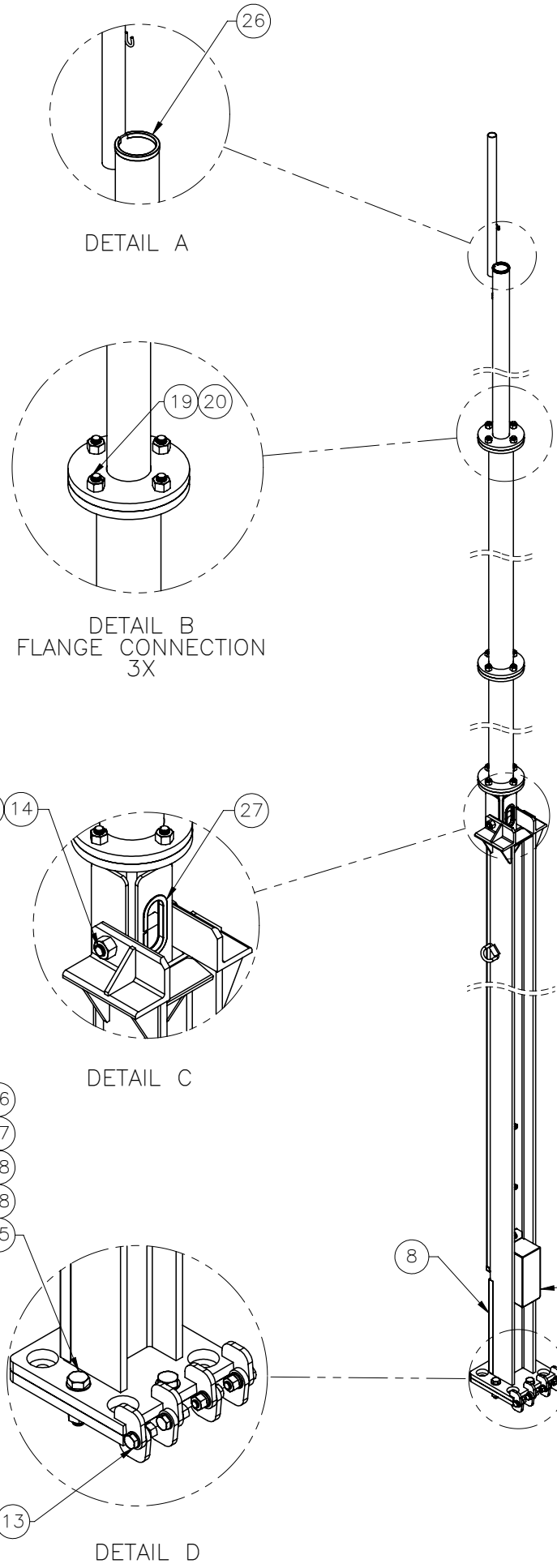
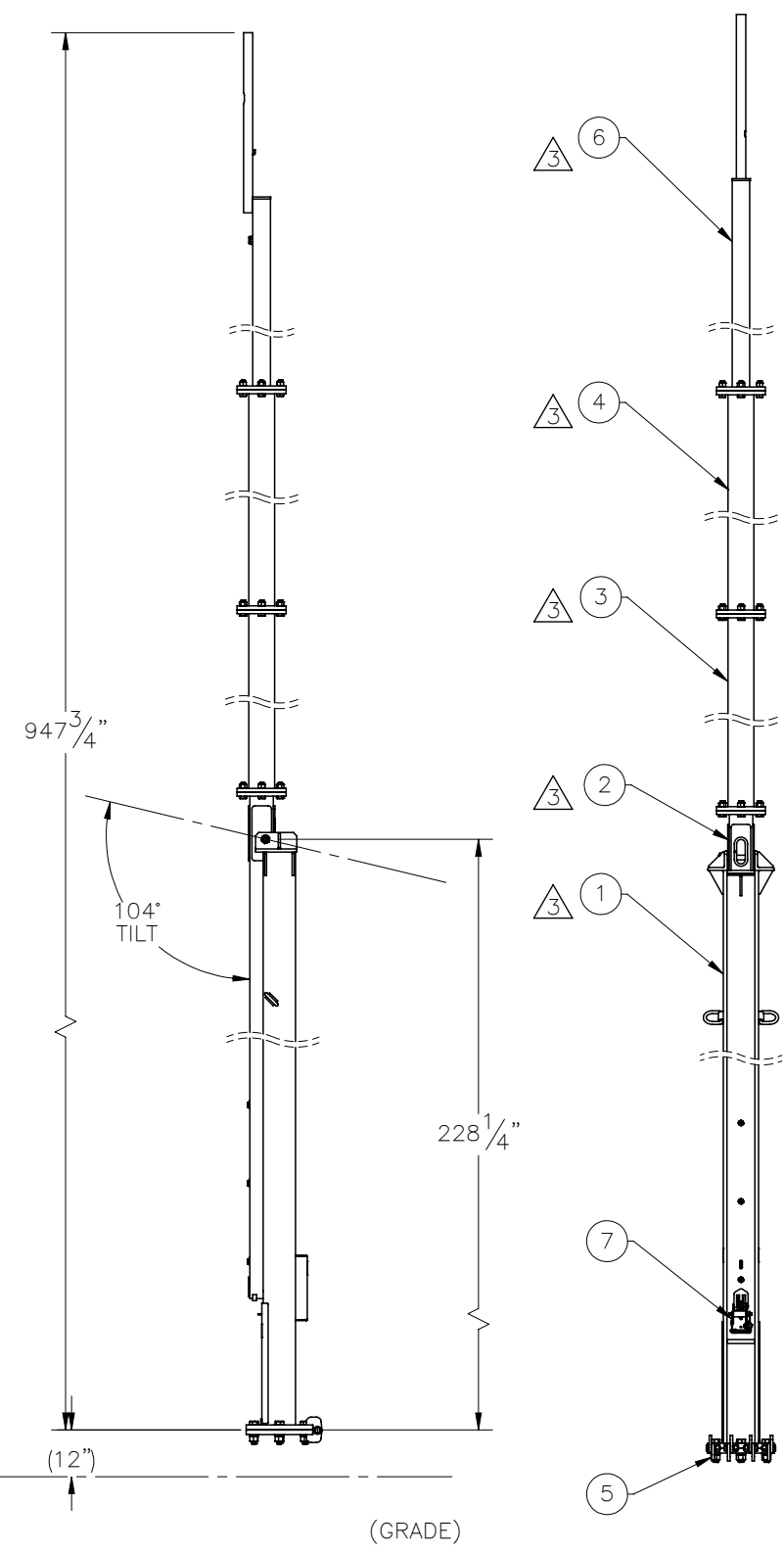

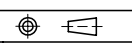


THE INFORMATION CONTAINED IN THIS DRAWING IS THE SOLE PROPERTY OF ELECTRO MECHANICAL INDUSTRIES, INC. ANY REPRODUCTION IN PART OR WHOLE WITHOUT THE WRITTEN PERMISSION OF ELECTRO MECHANICAL IND., IS PROHIBITED.

REVISIONS					
REV.	DCN #	DESCRIPTION	DATE	BY	APPROVED
3	01123	FIXED MATED DUE TO LOWER LEVEL CHANGES, .875 HINGE HW MOVED TO KIT 1000-0020-0104, TITLEBLOCK UPDATED TO LATEST EMI STANDARDS.	05/11/2022	JTR	JPB



ITEM NO.	QTY REQD	PART NUMBER	DESCRIPTION	LENGTH	WEIGHT
1	1	A-000-007	SUPPORT BASE ASSEMBLY		1418.96
2	1	A-000-008	LOWER SQUARE MAST ASSEMBLY		523.5
3	1	A-000-013	LOWER ROUND MAST ASSEMBLY		528.32
4	1	A-000-014	MIDDLE MAST ASSEMBLY		444.73
5	1	A-000-016	LOWER HINGE PLATE ASSEMBLY		104.05
6	1	400-004-5010-0320	UPPER ROUND MAST ASSEMBLY		232.4
7	1	1002-0050-0014	WINCH KIT (1/4" X 56' WIRE ROPE)		1.9
8	1	400-004-5010-0135	FRONT COVER		8.23
9	1	400-004-3050-0612	WINCH COVER		8.717
10	1	400-004-5000-0071	.875 DIA. X 6.75 LG. PIN		1.13
11	1	400-004-5000-0072	.875 DIA. X 2.25 LG. PIN		0.36
12	1	400-004-5000-0080	4" SHEAVE ASSEMBLY		2.37
13	1	1000-0020-0104	TILT-UP TOWER QUAD HINGE .875" HARDWARE KIT		5.239
14	1	002-0BG-0035	BOLT, 1.25-7UNC X 10.00 LG, ASTM A325, GALV		4.15
15	4	002-0BG-0031	BOLT, HX HD, 1.25-7UNC X 5.00 LG, GR B7, GALV		2.38
16	5	002-0NG-0020	NUT, HX, ANCO LOCKNUT, 1.25-7UNC, GR 2H, GALV		0.79
17	4	002-0LW-G001	WASHER, SPLIT LOCK, 1.25, GALV.		0.174
18	8	002-0FW-G011	WASHER, FLAT, 1.25, ASTM F436, GALV		0.13
19	12	002-0BG-0279	BOLT, HX. HD., 1.00-8, ASTM A325, GALV.	3.50	1.12
20	12	002-0NG-0000	NUT, HX, ANCO LOCK, 1.00-8UNC, GR 2H, GALV		0.43
21	3	002-0BG-0029	BOLT, HX HD, .75-10UNC X 9.00 LG, ASTM A325, GALV		1.29
22	3	002-0NG-0002	NUT, HX, .75-10UNC, GR 2H, GALV		0.19
23	3	002-0LW-G003	WASHER, SPLIT LOCK, .75", GALV		0.04
24	6	002-0FW-G000	WASHER, FLAT, .75 INCH, USS, GALV		0.09
25	4	002-0OC-0002	COTTER PIN, .188 DIA. X 1.50 LG, GALV		0.007
26	1	309-000-0001-12	EDGE GUARD, 3/16", 12" LG	12"	0.1
27	1	309-000-0002-15	EDGE GUARD, 1/2", 15" LG,	15"	0.102
28	2	999-999-L001	3.5" x 5" DO NOT CLIMB DECAL		0.006
29	2	999-999-L002	3.5" x 5" PINCH POINT DECAL		0.006
30	1	999-999-L003	3.5" x 5" WINCH RATING DECAL		0.006

SURFACE FINISH <input checked="" type="checkbox"/> UNLESS OTHERWISE SPECIFIED		UNLESS OTHERWISE SPECIFIED DIMENSIONS ARE IN INCHES		APPROVALS		DATE		 ELECTRO MECHANICAL INDUSTRIES, INC. 11250 NEESESHAW DRIVE HOUSTON, TEXAS 77065 1-800-453-0050	
MATERIAL SEE PARTS LIST		TOLERANCES		DRAWN T. PETERS		5/19/2015		TITLE: 80' TILT UP TOWER HD	
THIRD ANGLE PROJECTION 		.0 ±.06		CHECKER C. SANCHEZ		5/21/2015		ENGINEER VG. DUVAL	
		.000 ±.015		PRODUCTION J. CRAIG		5/25/2015		SIZE B	
		FRACTIONS ± 1/16		NEXT ASSY		USED ON		DRAWING NO. 400-004-5202	
		ANGLES ±.25°		APPLICATIONS				REV 3	
		HOLES: DRILLED OR PUNCHED ±1/32						SCALE: 1:192	
		BURNED ±1/32						WEIGHT: 3323.06 lbs.	
								SHEET 1 OF 1	