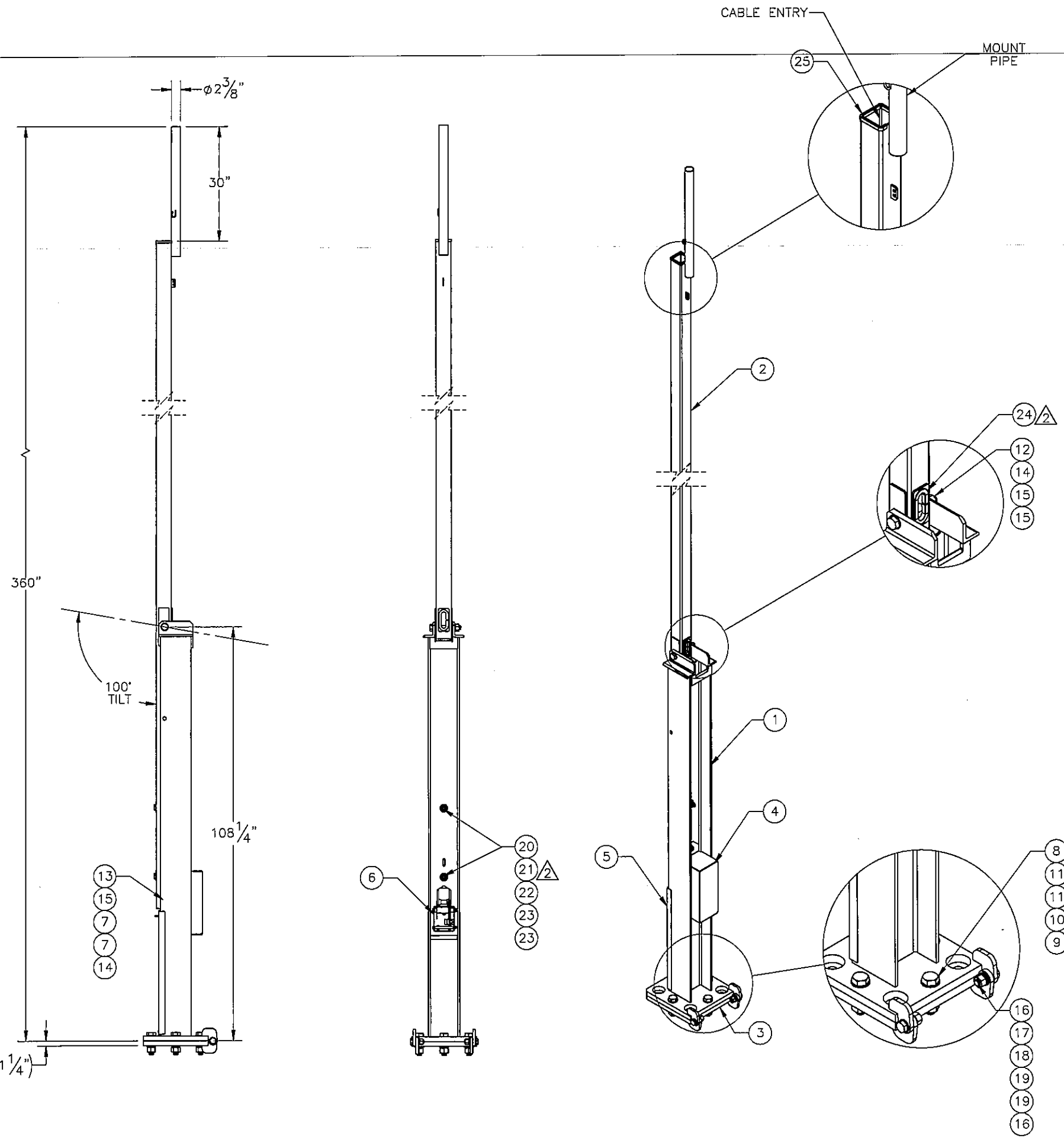



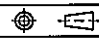
THE INFORMATION CONTAINED IN THIS DRAWING IS THE SOLE PROPERTY OF ELECTRO MECHANICAL INDUSTRIES, INC. ANY REPRODUCTION IN PART OR WHOLE WITHOUT THE WRITTEN PERMISSION OF ELECTRO MECHANICAL IND., IS PROHIBITED.

| REVISIONS | | | | | |
|-----------|----------|--|------------|-----|----------|
| REV. | DCN # | DESCRIPTION | DATE | BY | APPROVED |
| 2 | DCN00869 | UPDATED HARDWARE AND ADDED SAFETY DECALS | 2020.06.25 | BLH | JPB |



PATENT # 8,910,432

| ITEM NO. | QTY | PART NUMBER | DESCRIPTION | LENGTH | WEIGHT |
|----------|-----|-------------------|---|--------|--------|
| 1 | 1 | W-001-000 | SUPPORT BASE | | 424.5 |
| 2 | 1 | W-001-004 | MAST WELDMENT | | 246.2 |
| 3 | 1 | 400-004-5000-0130 | LOWER BASE PLATE ASSEMBLY | | 100.1 |
| 4 | 1 | 400-004-3050-0612 | WINCH COVER | | 8.74 |
| 5 | 1 | 400-004-3050-0629 | FRONT COVER - NOTCHED | | 8.00 |
| 6 | 1 | 1002-0050-0003 | WINCH KIT (1/4" X 14' WIRE ROPE) | | 8.7 |
| 7 | 2 | 400-000-0902 | 1" SCH. 40 PVC SLEEVE | | 0.024 |
| 8 | 4 | 002-0BG-0031 | BOLT, HX HD, 1.25-7UNC X 5.00 LG, GR B7, GALV | | 2.38 |
| 9 | 4 | 002-0NG-0020 | NUT, HX, ANCO LOCKNUT, 1.25-7UNC, GR 2H, GALV | | 0.79 |
| 10 | 4 | 002-0LW-G001 | WASHER, SPLIT LOCK, 1.25, GALV. | | 0.174 |
| 11 | 8 | 002-0FW-G011 | WASHER, FLAT, 1.25, ASTM F436, GALV | | 0.13 |
| 12 | 1 | 002-0BG-R030 | BOLT, HX HD, 1.00-8UNC X 7.50 LG, A325, GALV. | | 2.01 |
| 13 | 1 | 002-0BG-0051 | BOLT, HX HD, 1.00-8 X 5.50 LG, A325, GALV. | | 1.57 |
| 14 | 2 | 002-0NG-0000 | NUT, HX, ANCO LOCK, 1.00-BUNC, GR 2H, GALV | | 0.43 |
| 15 | 3 | 002-0FW-G009 | WASHER, FLAT, 1.00", F436, GALV. | | 0.08 |
| 16 | 2 | 002-0BG-0040 | BOLT, HX HD, .875-9UNC X 3.00 LG, ASTM A325, GALV | | 0.75 |
| 17 | 2 | 002-0NG-0009 | NUT, HEX, .875-9UNC, GR 2H, GALV | | 0.29 |
| 18 | 2 | 002-0LW-G007 | WASHER, SPLIT LOCK, .875, GALV | | 0.06 |
| 19 | 4 | 002-0FW-G008 | WASHER, FLAT, .875, ASTM F436, GALV | | 0.09 |
| 20 | 2 | 002-0BG-0237 | BOLT, HX HD, .75-10UNC X 7.00 LG, A325, GALV. | | 1.06 |
| 21 | 2 | 002-0NG-0002 | NUT, HX, .75-10UNC, GR 2H, GALV | | 0.19 |
| 22 | 2 | 002-0LW-G003 | WASHER, SPLIT LOCK, .75", GALV | | 0.04 |
| 23 | 4 | 002-0FW-G015 | WASHER, FLAT, .75 INCH, TYPE A, GALV | | 0.07 |
| 24 | 1 | 309-000-0002-11 | EDGE GUARD, 1/2", 11" LG. | 11" | 0.071 |
| 25 | 1 | 309-000-0001-13 | EDGE GUARD, 3/16", 13" LG | 13" | 0.1 |
| 26 | 2 | 999-999-L001 | 3.5" x 5" DO NOT CLIMB DECAL | | 0.01 |
| 27 | 2 | 999-999-L002 | 3.5" x 5" PINCH POINT DECAL | | 0.01 |
| 28 | 1 | 999-999-L003 | 3.5" x 5" WINCH RATING DECAL | | 0.01 |

| | | | | | | | | | |
|---|---|--|--|-------------------|-------------|-------------|--|--|--|
| SURFACE FINISH <input checked="" type="checkbox"/> UNLESS OTHERWISE SPECIFIED | | UNLESS OTHERWISE SPECIFIED DIMENSIONS ARE IN INCHES | | APPROVALS | | DATE | |  ELECTRO MECHANICAL INDUSTRIES, INC. 11230 NEESHAW DRIVE HOUSTON, TEXAS 77065 1-800-453-0050 | |
| MATERIAL | SEE PARTS LIST | TOLERANCES | | DRAWN | LCRUZ | 11.15.11 | | TITLE: | |
| THIRD ANGLE PROJECTION |  | .000 ± .06 .000 ± .01 .000 ± .005 | | CHECKED | C. SANCHEZ | 11.16.11 | | 30 FT TILT UP TOWER | |
| NEXT ASSY | USED ON | FRACTIONS ± 1/16 ANGLES ± .25° | | ENGINEER/DESIGNER | V.G. DUVALL | 11.21.11 | | SIZE | |
| APPLICATIONS | | HOLES: DRILLED OR PUNCHED ± 1/32 BURNED ± 1/32 | | PRODUCTION | JKS | 11.16.11 | | DRAWING NO. | |
| | | | | | | | | 400-004-2048 | |
| | | | | | | | | REV 2 | |
| | | | | | | SCALE: 1:30 | | WEIGHT: 821.0 lbs. | |
| | | | | | | | | SHEET 1 OF 1 | |