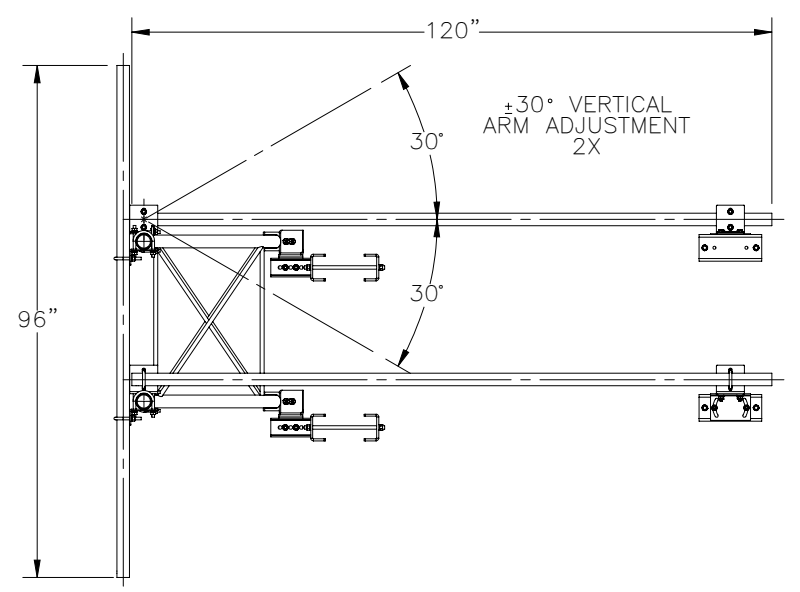
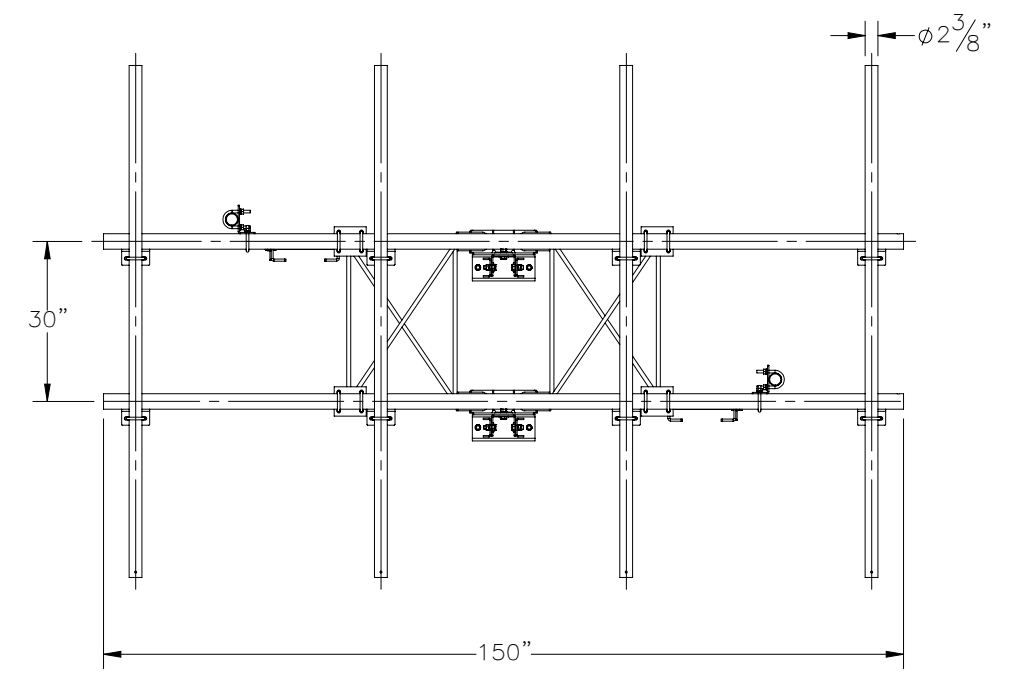
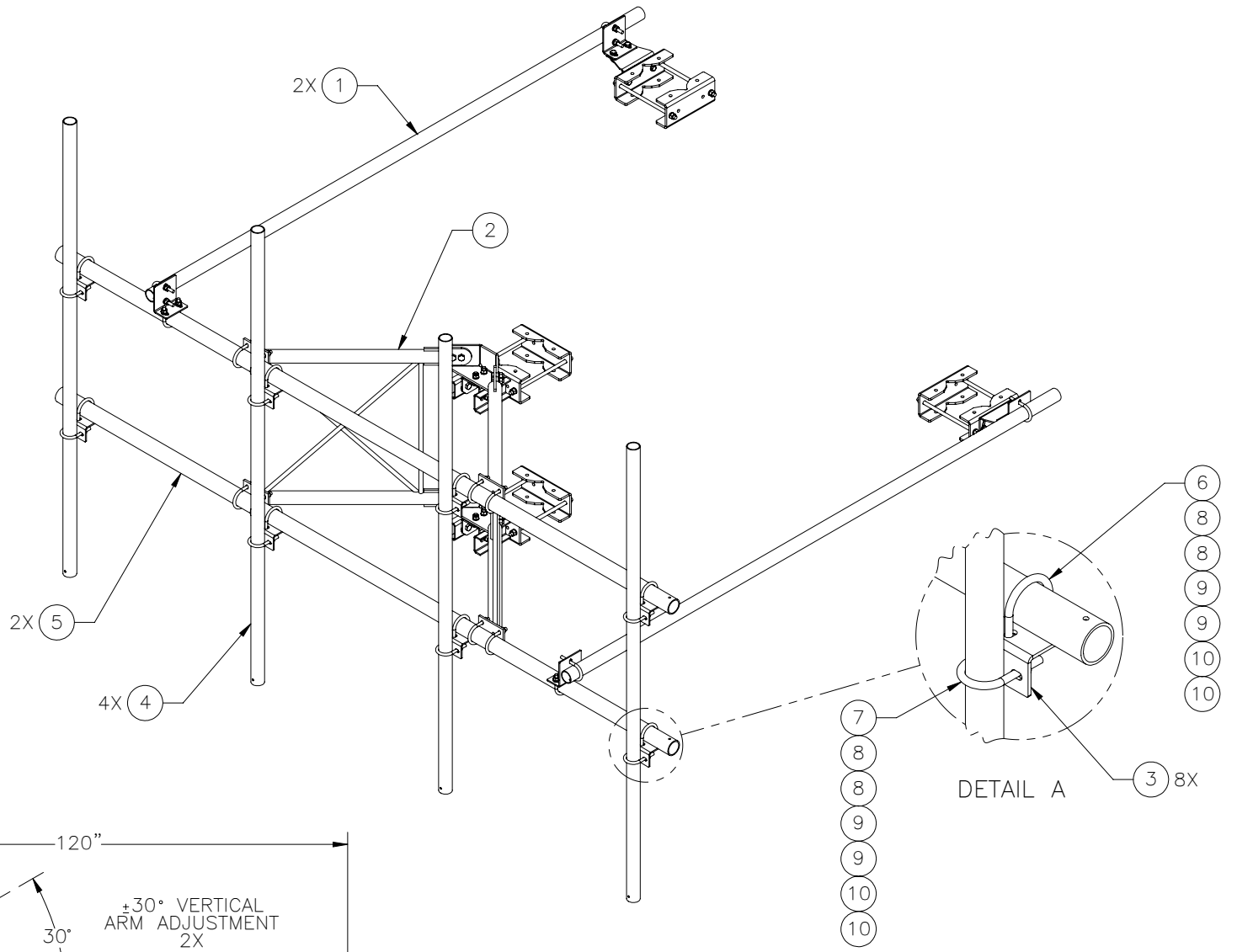
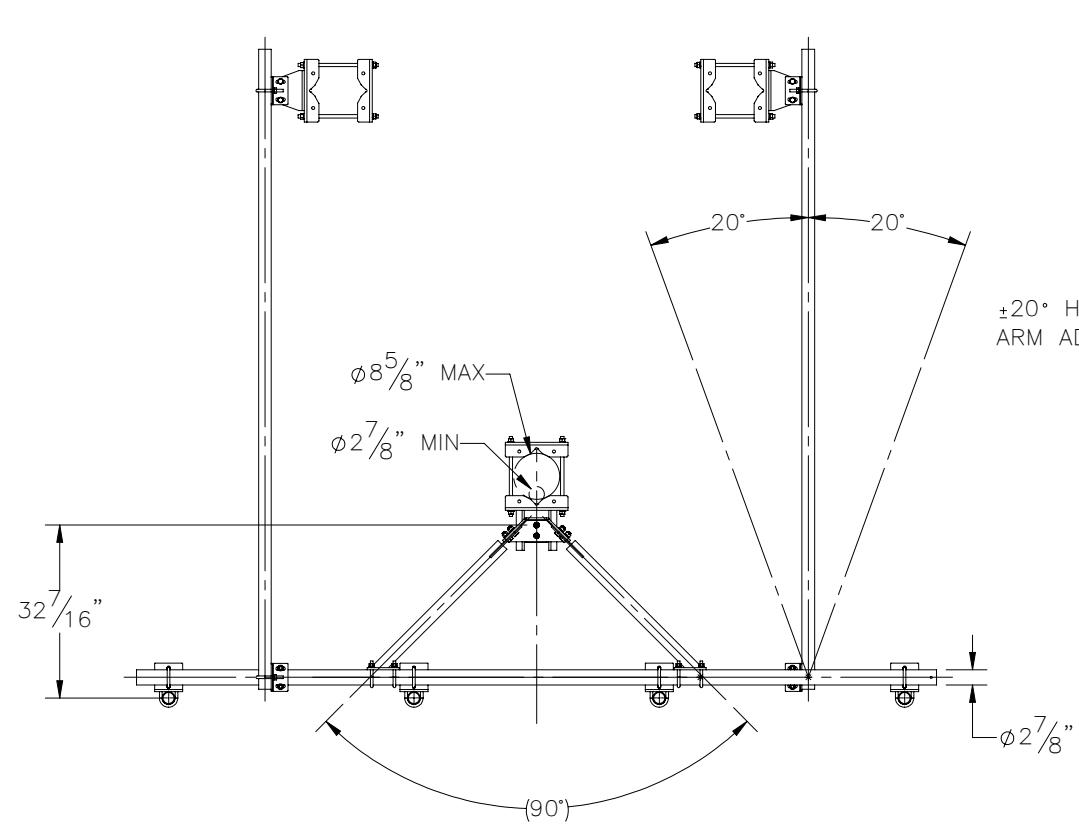

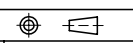


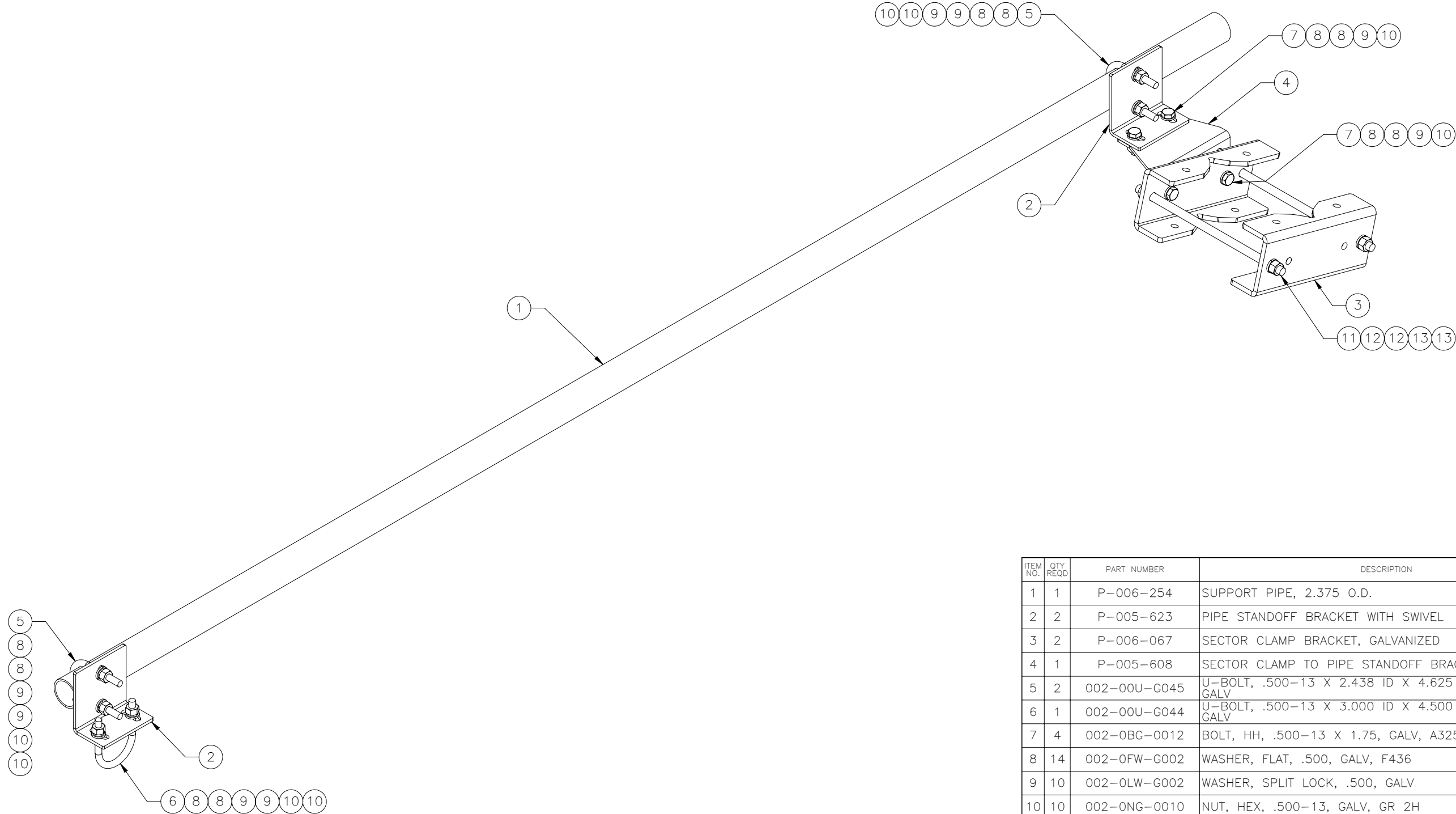
THE INFORMATION CONTAINED IN THIS DRAWING IS THE SOLE PROPERTY OF ELECTRO MECHANICAL INDUSTRIES, INC. ANY REPRODUCTION IN PART OR WHOLE WITHOUT THE WRITTEN PERMISSION OF ELECTRO MECHANICAL IND., IS PROHIBITED.




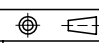
ITEM NO.	QTY REQD	PART NUMBER	DESCRIPTION	LENGTH	WEIGHT
1	2	1012-0000-0003	10' STIFF ARM KIT		75.12
2	1	A-000-694	SELF SUPPORTING V-FRAME		189.91
3	8	P-005-069	PIPE STANDOFF BRACKET		2.85
4	4	P-006-303	SUPPORT PIPE, 2.375" O.D.	96"	29.25
5	2	P-006-304	SUPPORT PIPE, 2.875" O.D.	150"	72.47
6	16	002-00U-G044	U-BOLT, .500-13 X 3.000 ID X 4.500 H X 1.63 TL, GALV	4 1/2"	0.642
7	8	002-00U-G045	U-BOLT, .500-13 X 2.438 ID X 4.625 H X 2.50 TL, GALV	4 5/8"	0.638
8	48	002-0FW-G002	WASHER, FLAT, .500, GALV, F436		0.03
9	48	002-0LW-G002	WASHER, SPLIT LOCK, .500, GALV		0.014
10	48	002-0NG-0010	NUT, HEX, .500-13, GALV, GR 2H		0.06

SURFACE FINISH <input checked="" type="checkbox"/> UNLESS OTHERWISE SPECIFIED		UNLESS OTHERWISE SPECIFIED DIMENSIONS ARE IN INCHES		APPROVALS		DATE		 ELECTRO MECHANICAL INDUSTRIES, INC. 11230 NEESESHAW DRIVE HOUSTON, TEXAS 77065 1-800-453-0050	
MATERIAL SEE PARTS LIST		TOLERANCES .0 ±.06 .00 ±.015 .000 ±.005		DRAWN J. ROACH		3/7/2023			
THIRD ANGLE PROJECTION 		FRACTIONS ± 1/16		CHECKER B. HUTSON		3/7/2023		TITLE: SECTOR FRAME, 12'-6" X 8' SINGLE FACE, 4 VERT. ANTENNA SUPPORTS	
NEXT ASSY USED ON		ANGLES ± .25°		ENGINEER J. Breen		3/7/2023			
APPLICATIONS		HOLES: DRILLED OR PUNCHED ± 1/32 BURNED ± 1/32		PRODUCTION J. KERNER		3/7/2023		SIZE B DRAWING NO. 1012-0010-3431 REV 0	
				SCALE: 1:36		WEIGHT: 645.20 lbs.		SHEET 1 OF 1	

THE INFORMATION CONTAINED IN THIS DRAWING IS THE SOLE PROPERTY OF ELECTRO MECHANICAL INDUSTRIES, INC. ANY REPRODUCTION IN PART OR WHOLE WITHOUT THE WRITTEN PERMISSION OF ELECTRO MECHANICAL IND., IS PROHIBITED.

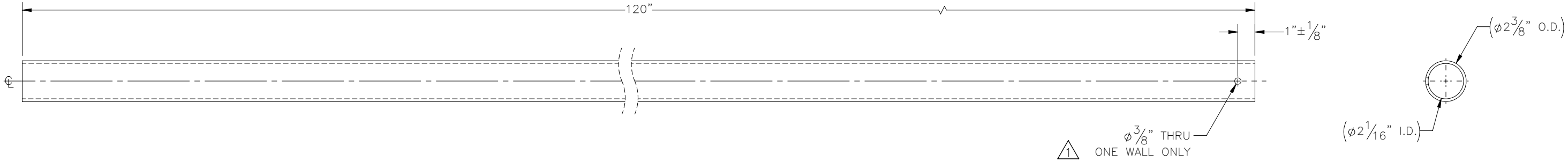


ITEM NO.	QTY REQD	PART NUMBER	DESCRIPTION	LENGTH	WEIGHT
1	1	P-006-254	SUPPORT PIPE, 2.375 O.D.	120"	36.56
2	2	P-005-623	PIPE STANDOFF BRACKET WITH SWIVEL		2.83
3	2	P-006-067	SECTOR CLAMP BRACKET, GALVANIZED		10.84
4	1	P-005-608	SECTOR CLAMP TO PIPE STANDOFF BRACKET	5 3/8"	4.55
5	2	002-00U-G045	U-BOLT, .500-13 X 2.438 ID X 4.625 H X 2.50 TL, GALV	4 5/8"	0.638
6	1	002-00U-G044	U-BOLT, .500-13 X 3.000 ID X 4.500 H X 1.63 TL, GALV	4 1/2"	0.642
7	4	002-0BG-0012	BOLT, HH, .500-13 X 1.75, GALV, A325, PT X 1.00	1 3/4"	0.1557
8	14	002-0FW-G002	WASHER, FLAT, .500, GALV, F436		0.03
9	10	002-0LW-G002	WASHER, SPLIT LOCK, .500, GALV		0.014
10	10	002-0NG-0010	NUT, HEX, .500-13, GALV, GR 2H		0.06
11	2	002-0AT-H038	AT, .625-11 X 15.0, GALV, GR B7	15"	1.31
12	4	002-0LW-G004	WASHER, SPLIT LOCK, .625, GALV		0.03
13	4	002-0NG-0004	NUT, HEX, .625-11, GALV, GR 2H		0.070

SURFACE FINISH <input checked="" type="checkbox"/> UNLESS OTHERWISE SPECIFIED		UNLESS OTHERWISE SPECIFIED DIMENSIONS ARE IN INCHES		APPROVALS	DATE	 ELECTRO MECHANICAL INDUSTRIES, INC. 11230 NEESESHAW DRIVE HOUSTON, TEXAS 77065 1-800-453-0050
MATERIAL	SEE PARTS LIST	TOLERANCES		DRAWN	2/28/2023	
THIRD ANGLE PROJECTION		.0 ±.06 .00 ±.015 .000 ±.005		CHECKER	2/28/2023	TITLE: <h2 style="text-align: center;">10' STIFF ARM KIT</h2>
NEXT ASSY	USED ON	FRACTIONS ± 1/16 ANGLES ± .25°		ENGINEER	2/28/2023	
APPLICATIONS		HOLES: DRILLED OR PUNCHED ± 1/32 BURNED ± 1/32		PRODUCTION	2/28/2023	
				J. KERNER		SIZE <b>B</b> DRAWING NO. <b>1012-0000-0003</b> REV <b>0</b> SCALE: 1:8 WEIGHT: 75.12 lbs. SHEET 1 OF 1

THE INFORMATION CONTAINED IN THIS DRAWING IS THE SOLE PROPERTY OF ELECTRO MECHANICAL INDUSTRIES, INC. ANY REPRODUCTION IN PART OR WHOLE WITHOUT THE WRITTEN PERMISSION OF ELECTRO MECHANICAL IND., IS PROHIBITED.


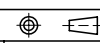
REVISIONS					
REV.	DCN #	DESCRIPTION	DATE	BY	APPROVED
1	01219	Ø3/8" HOLE FOR HANGING ADDED.	02/16/2023	JTR	JPB



NOTES:  
1. GALVANIZE PER ASTM A123

ITEM NO.	QTY REQD	PART NUMBER	DESCRIPTION	LENGTH	WEIGHT
1	1	PP1-0200-S40M	PIPE, 2.00 INCH, SCH. 40, ASTM A500 GR. B STL., PP1-0200-S40M	120"	36.56

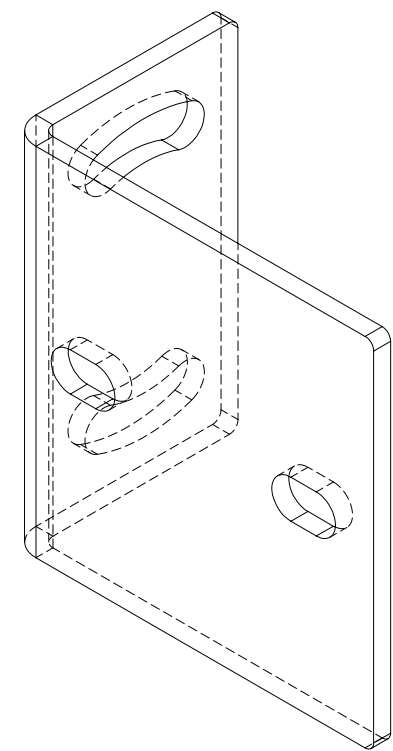
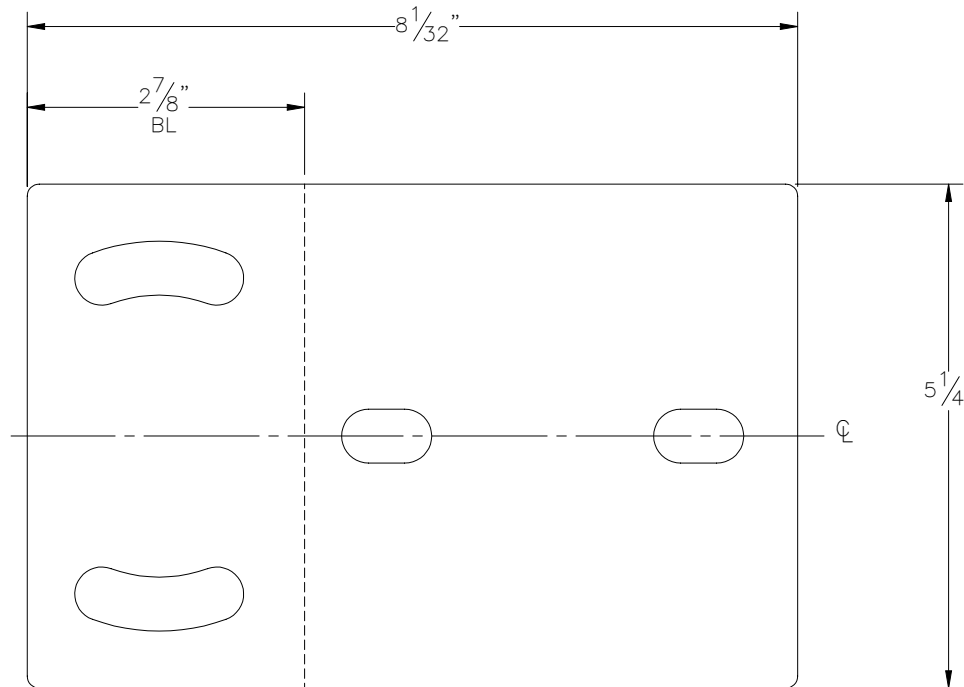
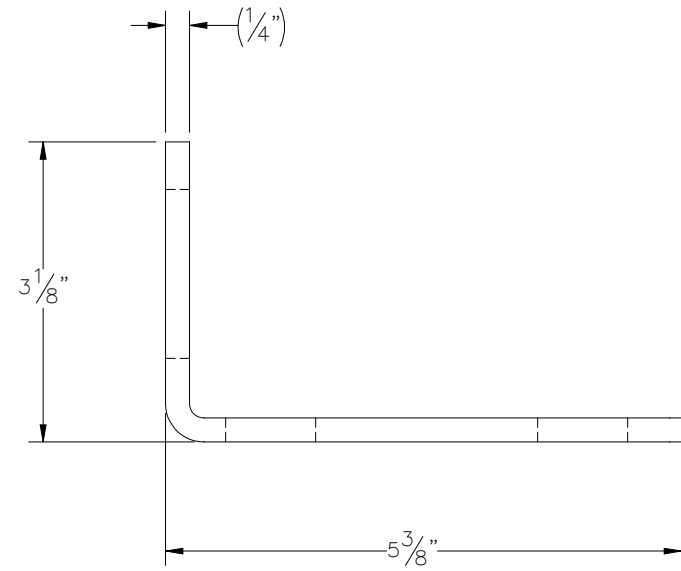
  

SURFACE FINISH	UNLESS OTHERWISE SPECIFIED	UNLESS OTHERWISE SPECIFIED DIMENSIONS ARE IN INCHES	APPROVALS	DATE	 ELECTRO MECHANICAL INDUSTRIES, INC. 11230 NEESESHAW DRIVE HOUSTON, TEXAS 77065 1-800-453-0050
MATERIAL	ASTM A500 GR B STL	TOLERANCES	DRAWN	8/30/2022	
THIRD ANGLE PROJECTION		FRACTIONS ± 1/16	CHECKER	9/9/2022	
		ANGLES ± .25°	ENGINEER	9/9/2022	
		HOLES: DRILLED OR PUNCHED ± 1/32	PRODUCTION	9/9/2022	
NEXT ASSY	USED ON	BURNED ± 1/32	J. LEE		
APPLICATIONS					

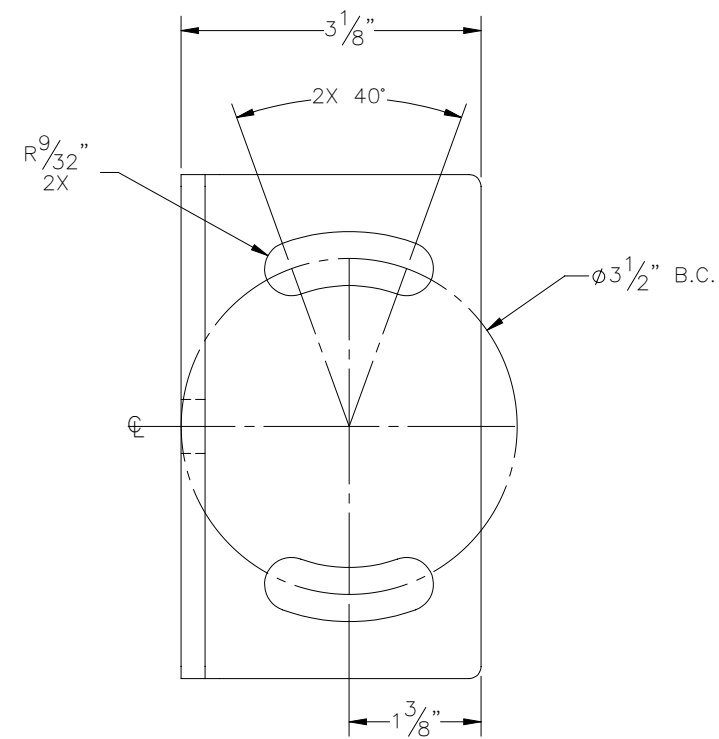
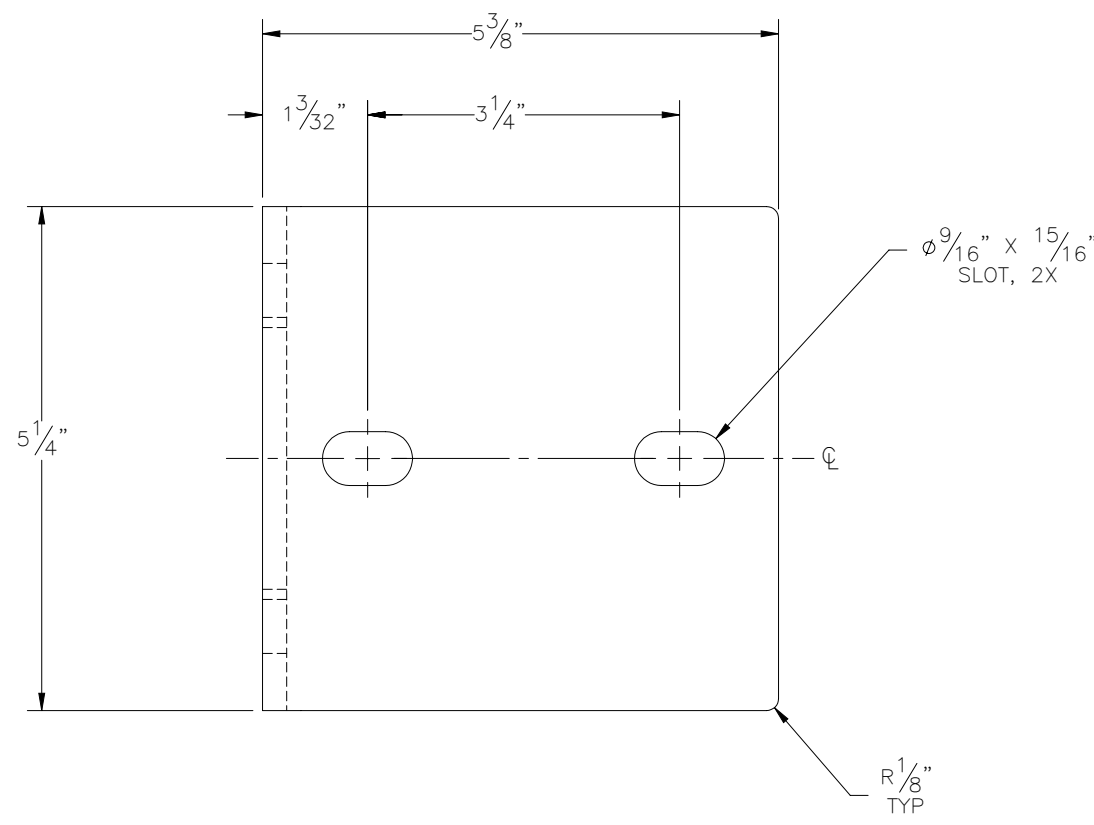
  

TITLE:	SUPPORT PIPE, 2.375 O.D.		
SIZE	DRAWING NO.	REV	
B	P-006-254	1	
SCALE:	1:6	WEIGHT:	36.56 lbs.
		SHEET 1 OF 1	

THE INFORMATION CONTAINED IN THIS DRAWING IS THE SOLE PROPERTY OF ELECTRO MECHANICAL INDUSTRIES, INC. ANY REPRODUCTION IN PART OR WHOLE WITHOUT THE WRITTEN PERMISSION OF ELECTRO MECHANICAL IND., IS PROHIBITED.



FLAT PATTERN



NOTES:

- FORM FLAT PATTERN WITH P7 TOP TOOL, V50/60 BOTTOM TOOL, AND .474 BEND DEDUCTION, CONTACT SUPERVISOR IF TOOLING UNAVAILABLE.
- GALVANIZE PER ASTM A123

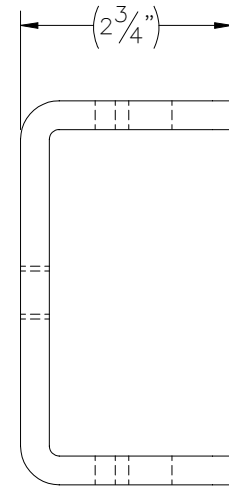
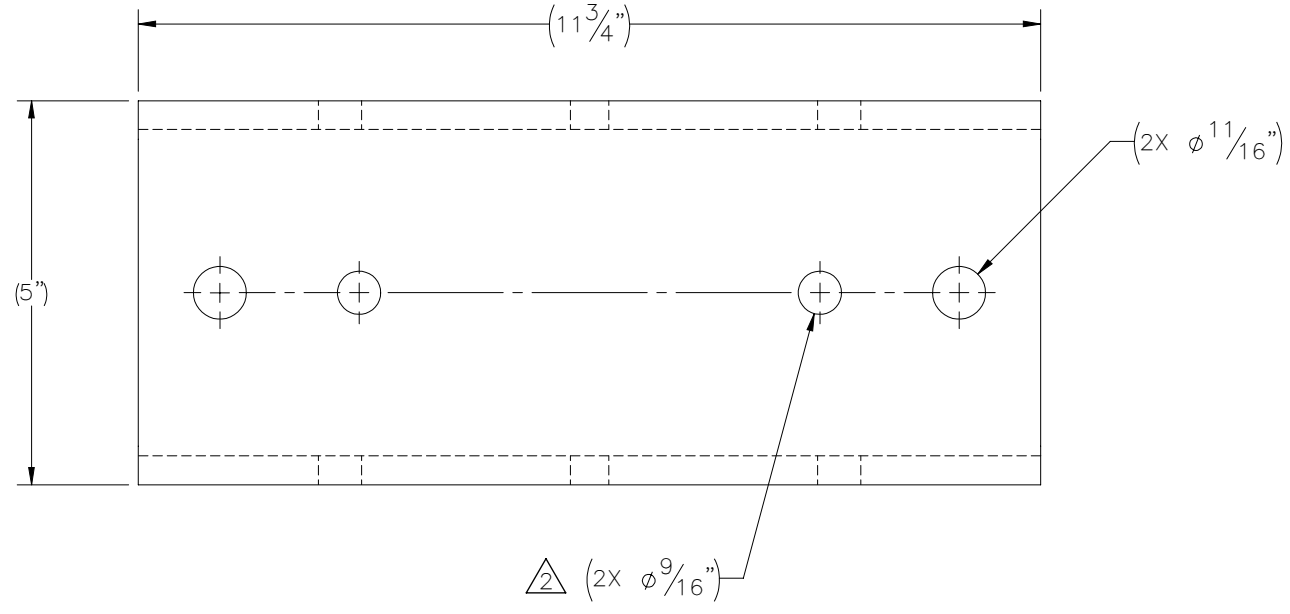
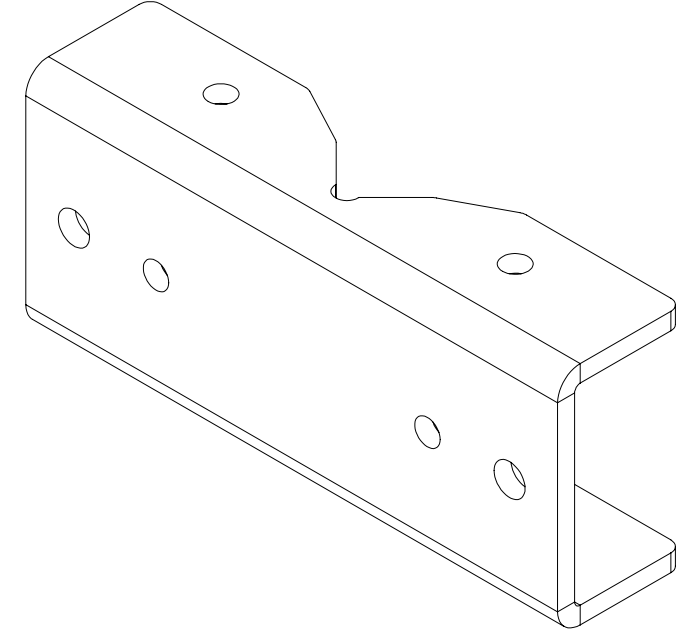
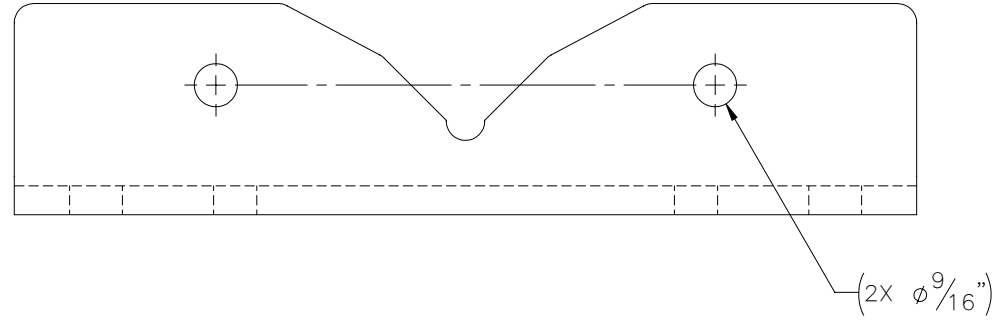
ITEM NO.	QTY REQD	PART NUMBER	DESCRIPTION	LENGTH	WEIGHT																														
1	1	PL1-016E	PLATE 1/4" X 5 1/4" X 8 1/32" ASTM A572 GR 50 STL	8 1/32"	2.83																														
SURFACE FINISH		UNLESS OTHERWISE SPECIFIED		APPROVALS																															
MATERIAL		SEE PARTS LIST		DATE																															
THIRD ANGLE PROJECTION		<table border="1"> <tr> <th colspan="2">TOLERANCES UNLESS OTHERWISE SPECIFIED DIMENSIONS ARE IN INCHES</th> </tr> <tr> <td>.0</td> <td>± .06</td> </tr> <tr> <td>.00</td> <td>± .015</td> </tr> <tr> <td>.000</td> <td>± .005</td> </tr> <tr> <td>FRACTIONS</td> <td>± 1/16</td> </tr> <tr> <td>ANGLES</td> <td>± .25°</td> </tr> <tr> <td colspan="2">HOLES:</td> </tr> <tr> <td>DRILLED OR PUNCHED</td> <td>+1/32</td> </tr> <tr> <td>BURNED</td> <td>±1/32</td> </tr> </table>		TOLERANCES UNLESS OTHERWISE SPECIFIED DIMENSIONS ARE IN INCHES		.0	± .06	.00	± .015	.000	± .005	FRACTIONS	± 1/16	ANGLES	± .25°	HOLES:		DRILLED OR PUNCHED	+1/32	BURNED	±1/32	<table border="1"> <tr> <td>DRAWN</td> <td>J. ROACH</td> <td>2/27/2023</td> </tr> <tr> <td>CHECKER</td> <td>B. HUTSON</td> <td>2/28/2023</td> </tr> <tr> <td>ENGINEER</td> <td>J. Breen</td> <td>2/28/2023</td> </tr> <tr> <td>PRODUCTION</td> <td>J. KERNER</td> <td>2/28/2023</td> </tr> </table>		DRAWN	J. ROACH	2/27/2023	CHECKER	B. HUTSON	2/28/2023	ENGINEER	J. Breen	2/28/2023	PRODUCTION	J. KERNER	2/28/2023
TOLERANCES UNLESS OTHERWISE SPECIFIED DIMENSIONS ARE IN INCHES																																			
.0	± .06																																		
.00	± .015																																		
.000	± .005																																		
FRACTIONS	± 1/16																																		
ANGLES	± .25°																																		
HOLES:																																			
DRILLED OR PUNCHED	+1/32																																		
BURNED	±1/32																																		
DRAWN	J. ROACH	2/27/2023																																	
CHECKER	B. HUTSON	2/28/2023																																	
ENGINEER	J. Breen	2/28/2023																																	
PRODUCTION	J. KERNER	2/28/2023																																	
NEXT ASSY		USED ON		<table border="1"> <tr> <td>SIZE</td> <td>DRAWING NO.</td> <td>REV</td> </tr> <tr> <td>B</td> <td>P-005-623</td> <td>0</td> </tr> </table>		SIZE	DRAWING NO.	REV	B	P-005-623	0																								
SIZE	DRAWING NO.	REV																																	
B	P-005-623	0																																	
APPLICATIONS		BURNED		<table border="1"> <tr> <td>SCALE:</td> <td>1:2</td> <td>WEIGHT:</td> <td>2.83 lbs.</td> <td>SHEET</td> <td>1 OF 1</td> </tr> </table>		SCALE:	1:2	WEIGHT:	2.83 lbs.	SHEET	1 OF 1																								
SCALE:	1:2	WEIGHT:	2.83 lbs.	SHEET	1 OF 1																														



PIPE STANDOFF BRACKET WITH SWIVEL

THE INFORMATION CONTAINED IN THIS DRAWING IS THE SOLE PROPERTY OF ELECTRO MECHANICAL INDUSTRIES, INC. ANY REPRODUCTION IN PART OR WHOLE WITHOUT THE WRITTEN PERMISSION OF ELECTRO MECHANICAL IND., IS PROHIBITED.

REVISIONS					
REV.	DCN #	DESCRIPTION	DATE	BY	APPROVED
2	01219	VISUAL UPDATE WITH LOWER LEVEL CHANGES.	02/15/2023	JTR	JPB



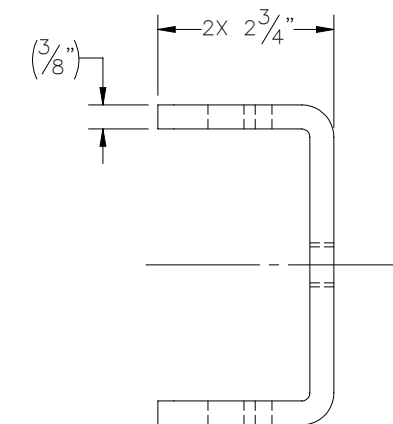
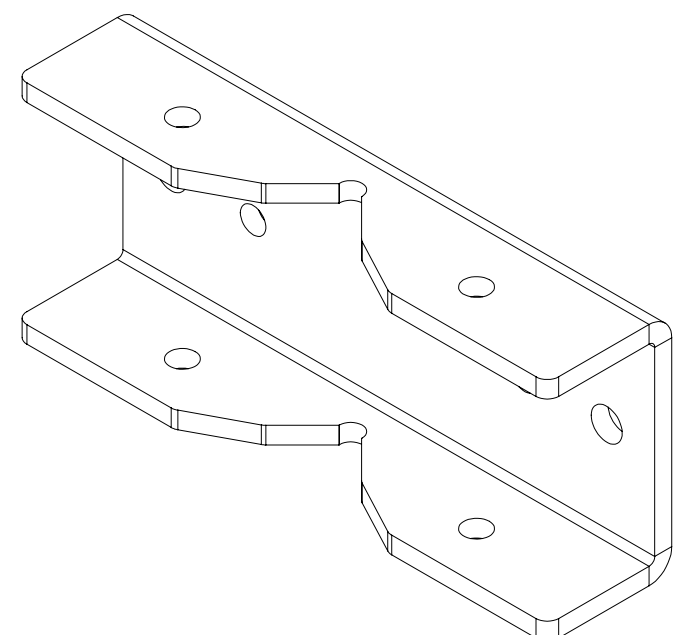
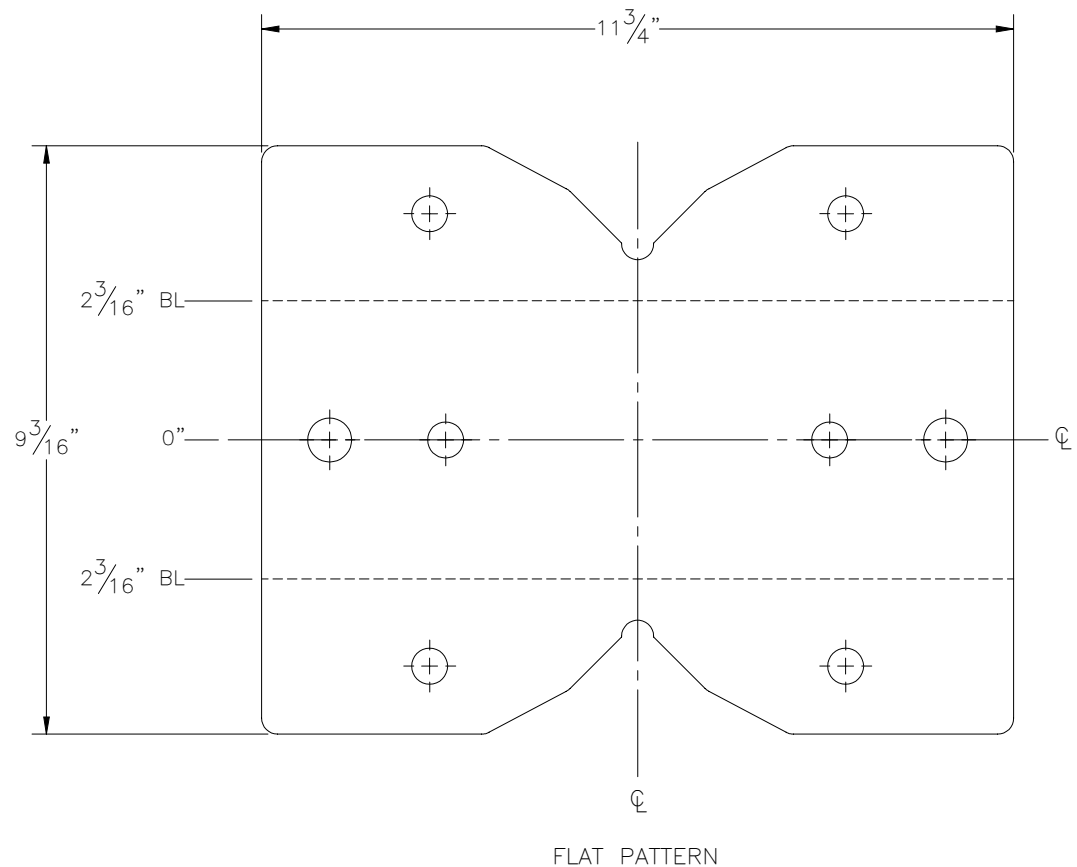
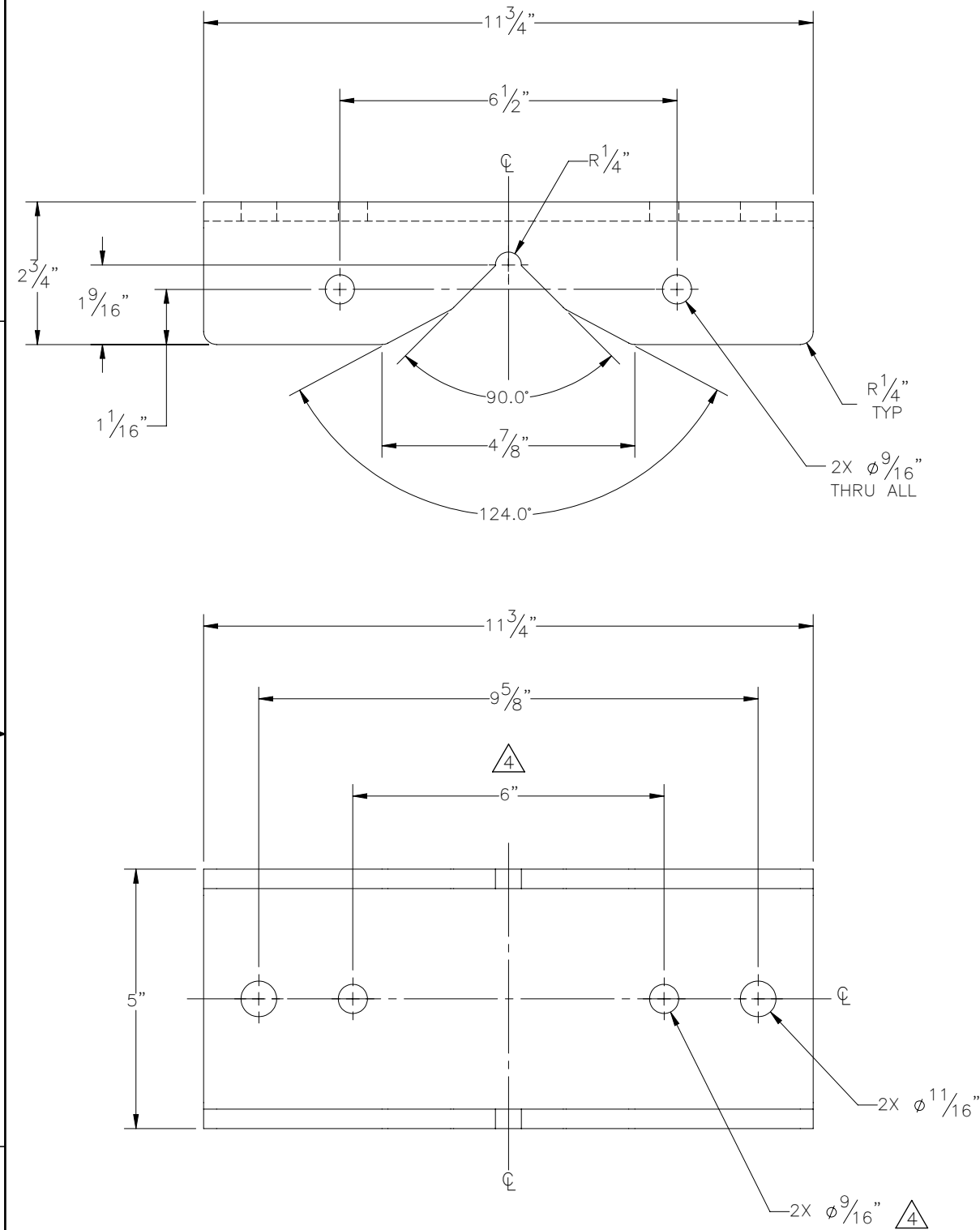
NOTE:  
GALVANIZE PER ASTM A123

ITEM NO.	QTY REQD	PART NUMBER	DESCRIPTION	LENGTH	WEIGHT
1	1	P-005-095	SECTOR CLAMP BRACKET		10.84
SURFACE FINISH		UNLESS OTHERWISE SPECIFIED	UNLESS OTHERWISE SPECIFIED DIMENSIONS ARE IN INCHES	APPROVALS	DATE
MATERIAL		SEE PARTS LIST	TOLERANCES	DRAWN	6/22/2022
THIRD ANGLE PROJECTION			.0 ± .06 .00 ± .015 .000 ± .005	CHECKER	6/22/2022
NEXT ASSY		USED ON	FRACTIONS ± 1/16	ENGINEER	6/22/2022
APPLICATIONS			ANGLES ± .25°	PRODUCTION	6/22/2022
			HOLES:	J. LEE	
			DRILLED OR PUNCHED	TITLE: <b>SECTOR CLAMP BRACKET, GALVANIZED</b>	
			BURNED	SIZE <b>B</b> DRAWING NO. <b>P-006-067</b> REV <b>2</b>	
				SCALE: 2:5 WEIGHT: 10.84 lbs. SHEET 1 OF 1	



THE INFORMATION CONTAINED IN THIS DRAWING IS THE SOLE PROPERTY OF ELECTRO MECHANICAL INDUSTRIES, INC. ANY REPRODUCTION IN PART OR WHOLE WITHOUT THE WRITTEN PERMISSION OF ELECTRO MECHANICAL IND., IS PROHIBITED.

REVISIONS					
REV.	DCN #	DESCRIPTION	DATE	BY	APPROVED
4	01219	ADDED 2X $\phi 9/16$ " HOLES FOR ALTERNATE ATTACHMENTS, UPDATED BEND NOTES.	02/15/2023	JTR	JPB



NOTES:  
 1. FORM FLAT PATTERN WITH P7 TOP TOOL, V60/60 BOTTOM TOOL, AND .653 BEND DEDUCTION, CONTACT SUPERVISOR IF TOOLING UNAVAILABLE.  
 2. ACCOMMODATE FOR GRAIN DIRECTION ON CRITICAL BENDS.

ITEM NO.	QTY REQD	PART NUMBER	DESCRIPTION	LENGTH	WEIGHT
1	1	PL1-024A	PLATE 3/8" X 9 1/8" X 11 3/4" ASTM A36 STL	11 3/4"	11.02

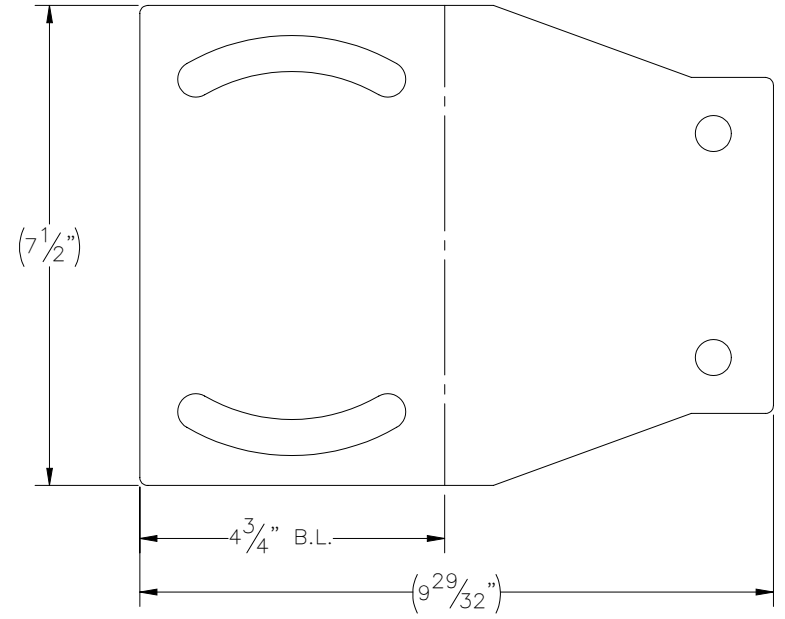
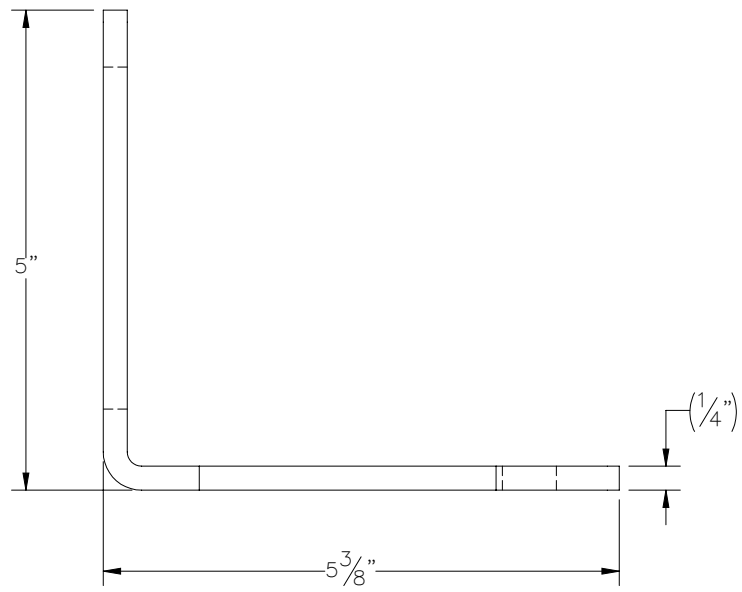
  

SURFACE FINISH		UNLESS OTHERWISE SPECIFIED		UNLESS OTHERWISE SPECIFIED DIMENSIONS ARE IN INCHES		APPROVALS		DATE
✓		✓		✓		C. SANCHEZ		10/25/2021
MATERIAL		ASTM A36 STL		TOLERANCES		DRAWN		C. SANCHEZ
THIRD ANGLE PROJECTION		✓		FRACTIONS ± 1/16		CHECKER		J. ROACH
NEXT ASSY		USED ON		ANGLES ± .25°		ENGINEER		J. BREEN
APPLICATIONS		BURNED		HOLES: DRILLED OR PUNCHED ± 1/32		PRODUCTION		J. LEE
				± 1/32				

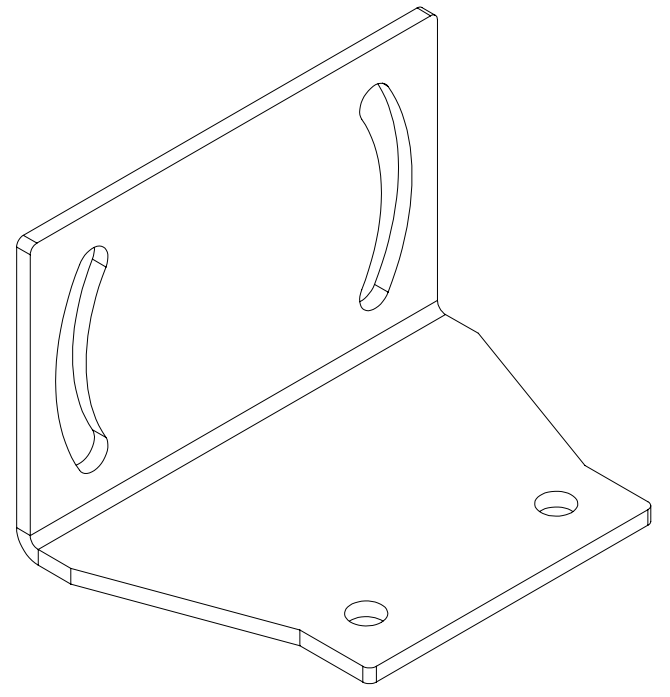
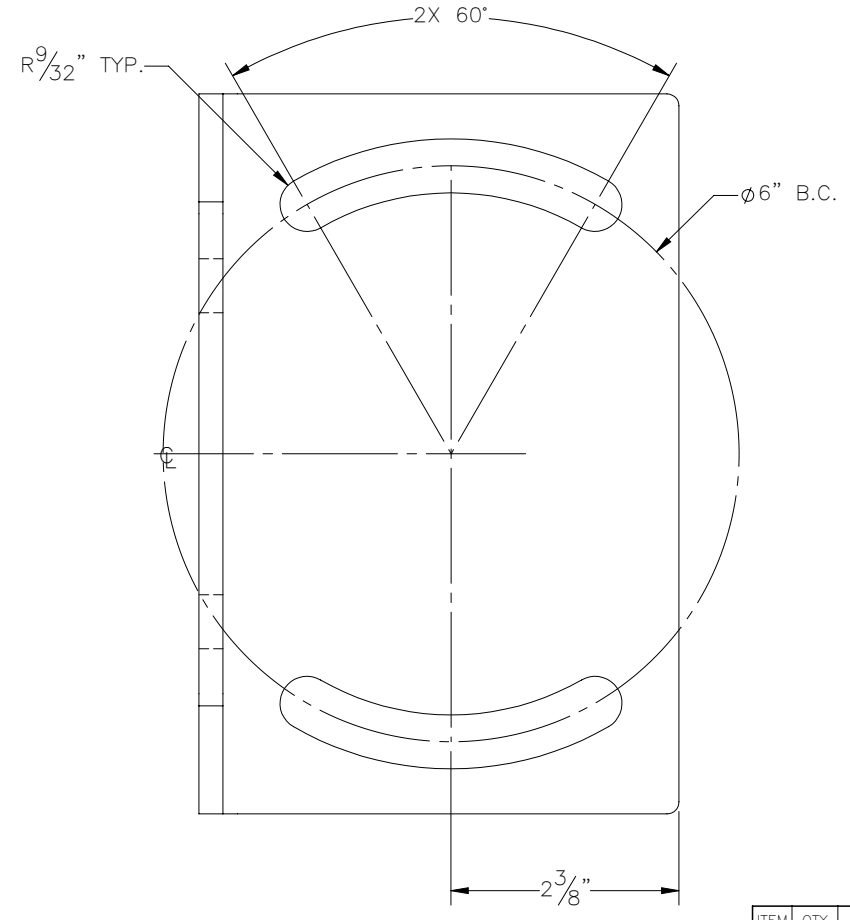
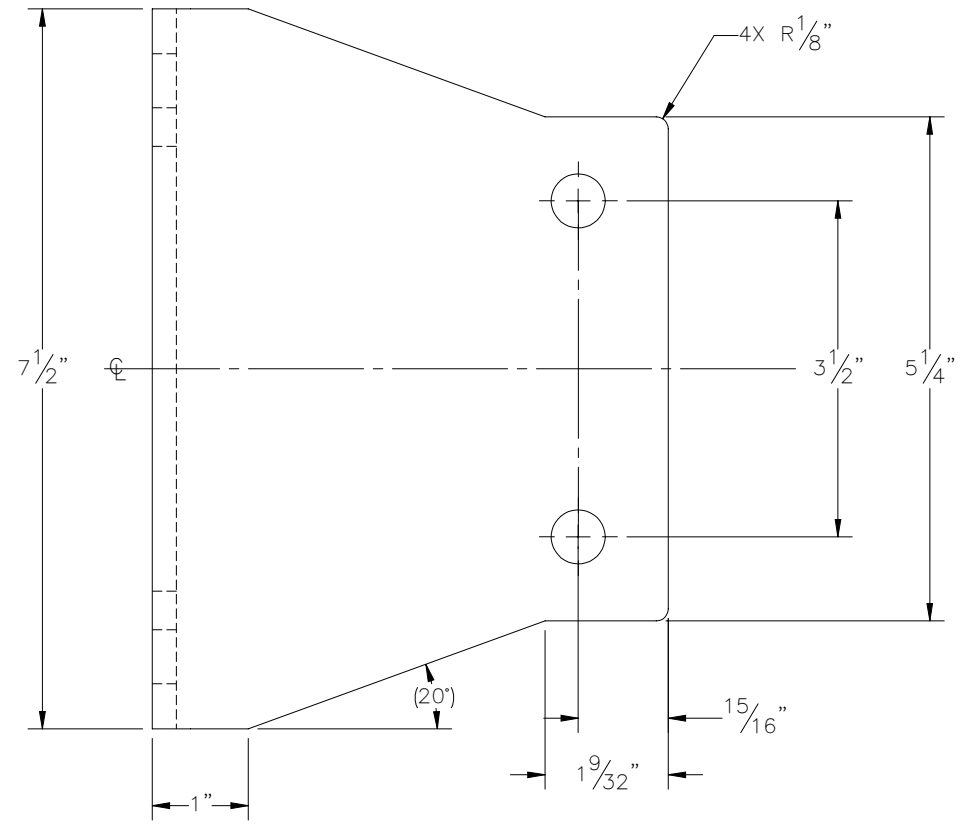
  

ELECTRO MECHANICAL INDUSTRIES, INC. 11230 NEESESHAW DRIVE HOUSTON, TEXAS 77065 1-800-453-0050		TITLE: <b>SECTOR CLAMP BRACKET</b>	
SIZE <b>B</b>	DRAWING NO. P-005-095	REV 4	
SCALE: 1:3	WEIGHT: 10.84 lbs.	SHEET 1 OF 1	


THE INFORMATION CONTAINED IN THIS DRAWING IS THE SOLE PROPERTY OF ELECTRO MECHANICAL INDUSTRIES, INC. ANY REPRODUCTION IN PART OR WHOLE WITHOUT THE WRITTEN PERMISSION OF ELECTRO MECHANICAL IND., IS PROHIBITED.



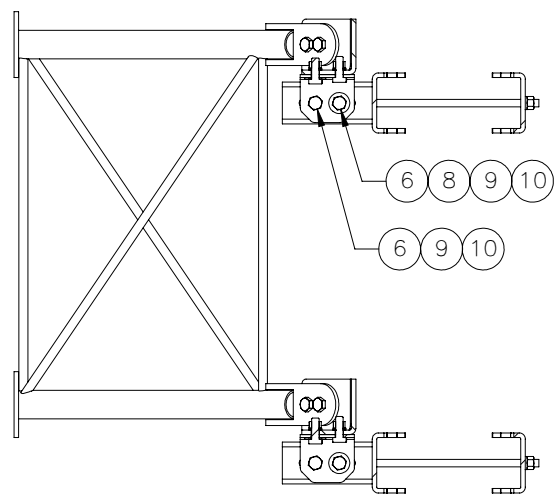
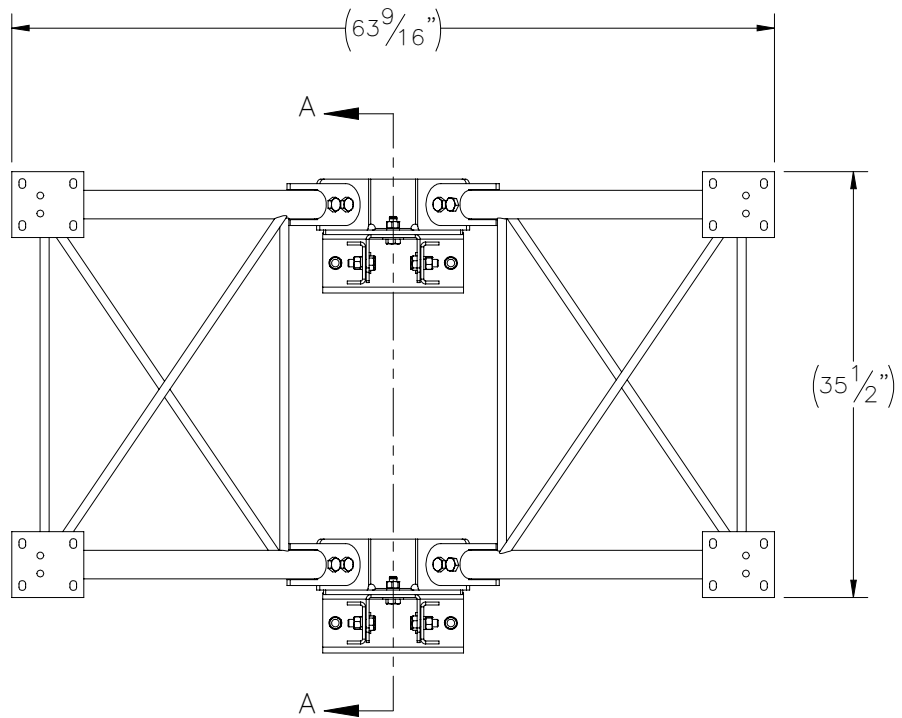
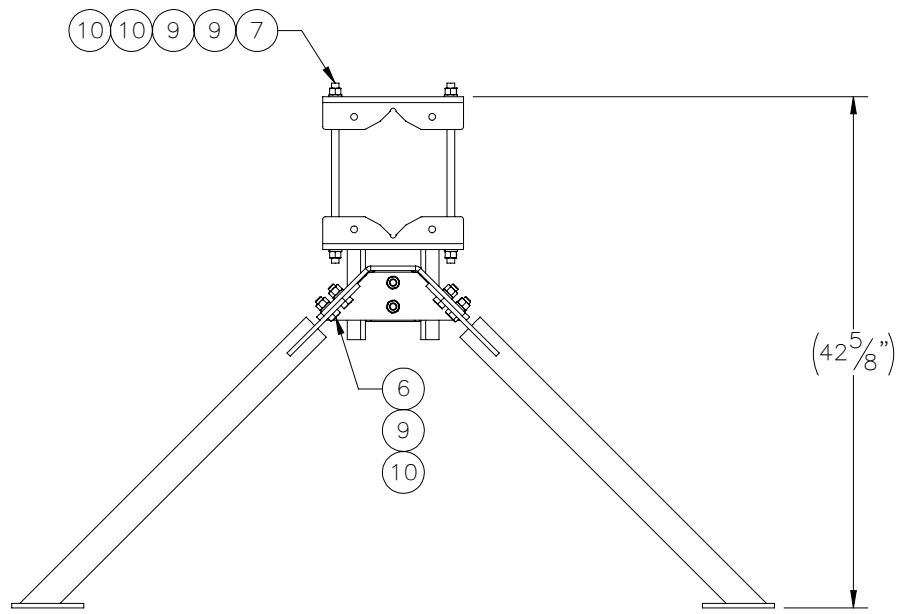
FLAT PATTERN



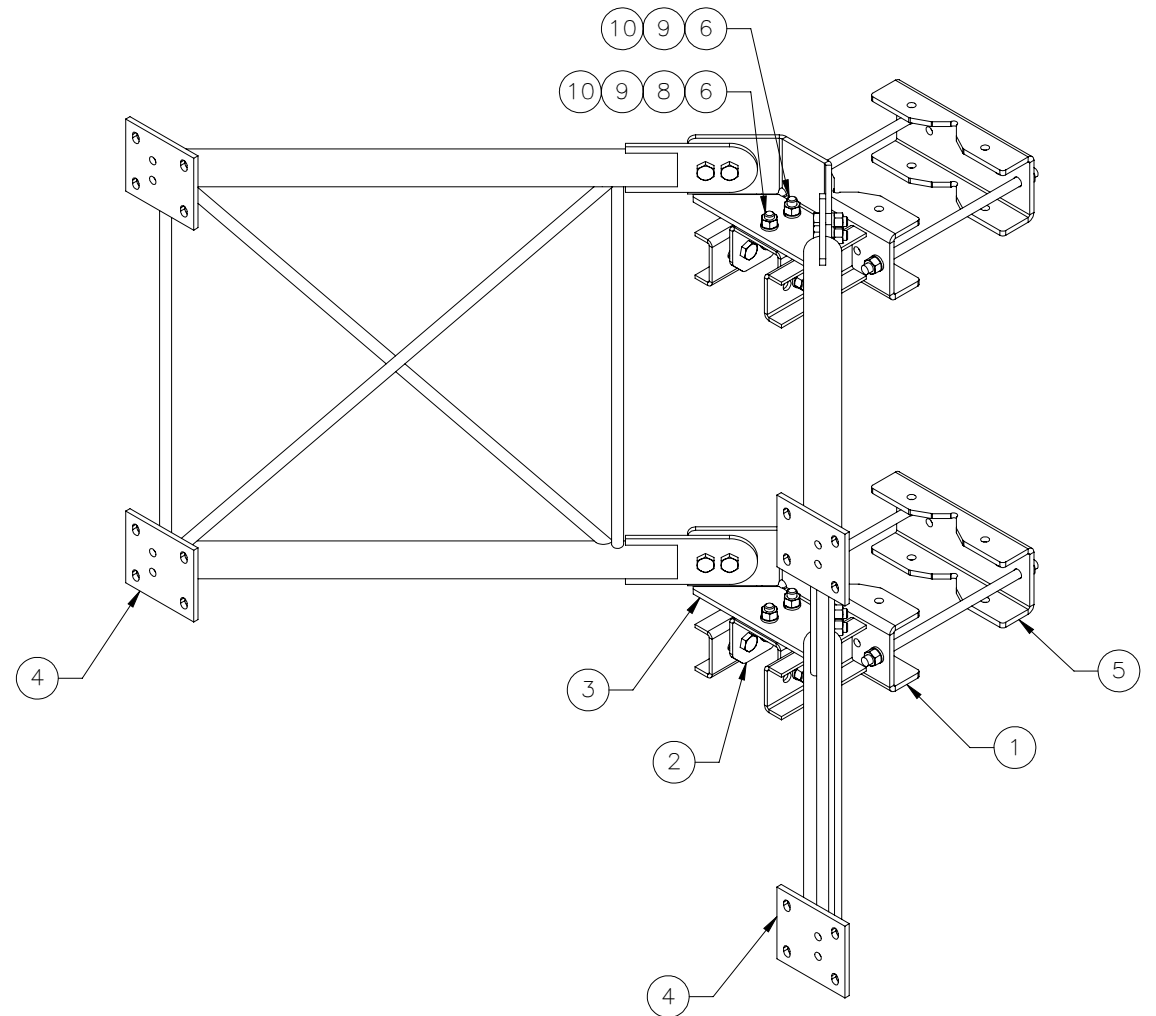
- NOTES:  
UNLESS OTHERWISE SPECIFIED.
- FORM FLAT PATTERN WITH P7 TOP TOOL, V50/60 BOTTOM TOOL, AND 0.474 BEND DEDUCTION. CONTACT SUPERVISOR IF TOOLING UNAVAILABLE.
  - GALVANIZE PER ASTM A123.

ITEM NO.	QTY REQD	PART NUMBER	DESCRIPTION	LENGTH	WEIGHT
1	1	PL1-016E	PLATE 1/4" X 7 1/2" X 9 29/32" ASTM A572 GR 50 STL	9 29/32"	4.55
SURFACE FINISH		UNLESS OTHERWISE SPECIFIED	UNLESS OTHERWISE SPECIFIED	APPROVALS	DATE
MATERIAL		SEE PARTS LIST	TOLERANCES	DRAWN	J. ROACH 2/21/2023
THIRD ANGLE PROJECTION			FRACTIONS ± 1/16	CHECKER	B. HUTSON 2/23/2023
NEXT ASSY		USED ON	ANGLES ± .25°	ENGINEER	J. Breen 2/27/2023
APPLICATIONS			HOLES: DRILLED OR PUNCHED ± 1/32	PRODUCTION	J. KERNER 2/27/2023
			BURNED ± 1/32	 ELECTRO MECHANICAL INDUSTRIES, INC. 11230 NEESESHAW DRIVE HOUSTON, TEXAS 77065 1-800-453-0050	
				TITLE: SECTOR CLAMP TO PIPE STANDOFF BRACKET	
				SIZE	DRAWING NO.
				B	P-005-608
				SCALE: 1:2	WEIGHT: 4.55 lbs.
					REV 0
					SHEET 1 OF 1


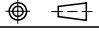
THE INFORMATION CONTAINED IN THIS DRAWING IS THE SOLE PROPERTY OF ELECTRO MECHANICAL INDUSTRIES, INC. ANY REPRODUCTION IN PART OR WHOLE WITHOUT THE WRITTEN PERMISSION OF ELECTRO MECHANICAL IND., IS PROHIBITED.



SECTION A-A



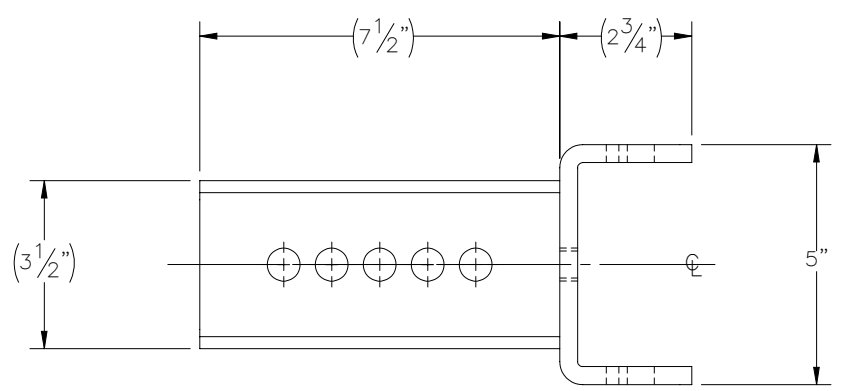
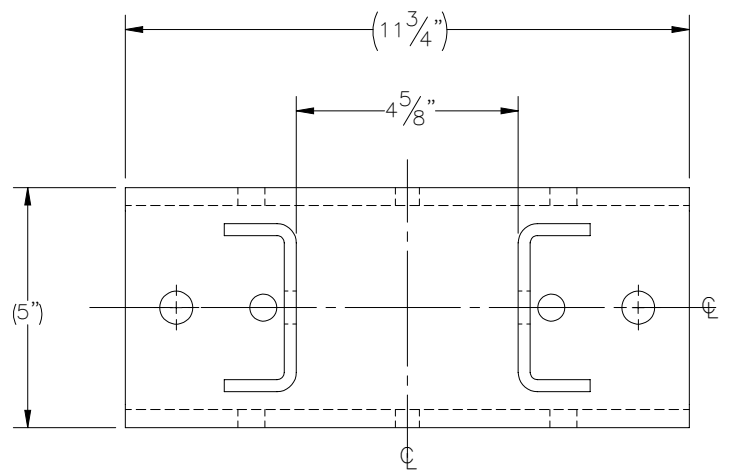
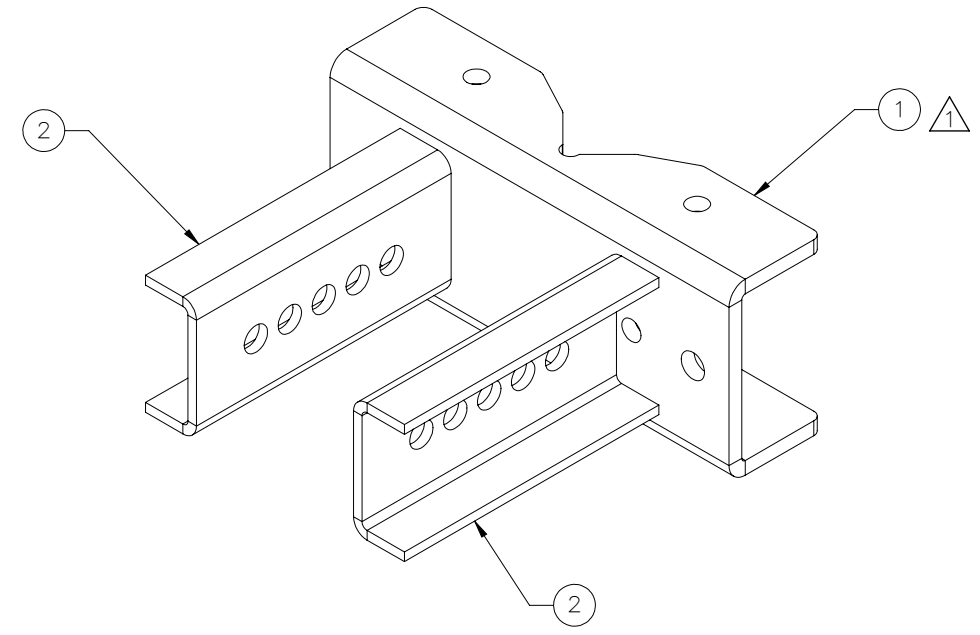
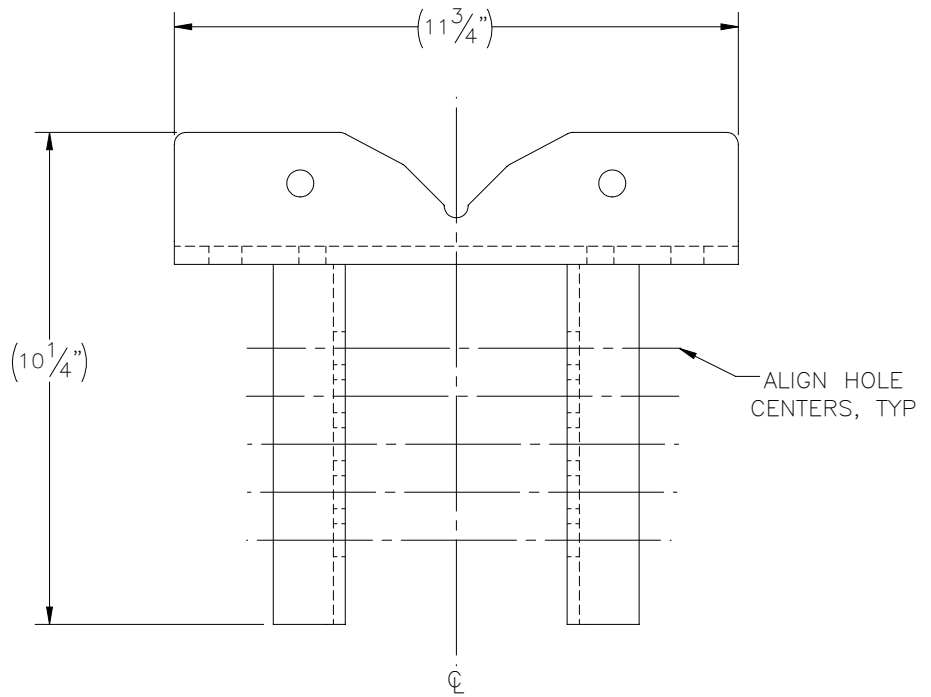
ITEM NO.	QTY REQD	PART NUMBER	DESCRIPTION	LENGTH	WEIGHT
1	2	W-002-241	CLAMP BRACKET WELDMENT		16.71
2	2	P-005-098	PIVOT BRACKET		3.28
3	2	P-005-097	CORNER BRACKET		10.37
4	2	W-002-240	SECTOR FRAME WELDMENT		46.97
5	2	P-006-067	SECTOR CLAMP BRACKET, GALVANIZED		10.84
6	20	002-0BG-0033	BOLT, HH, .625-11 X 1.75, GALV, A325, PT X 1.25	1 3/4"	0.2597
7	4	002-0AT-H038	AT, .625-11 X 15.0, GALV, GR B7	15"	1.31
8	6	002-0FW-G017	WASHER, FLAT, .625, GALV, USS		0.08
9	28	002-0LW-G004	WASHER, SPLIT LOCK, .625, GALV		0.03
10	28	002-0NG-0004	NUT, HEX, .625-11, GALV, GR 2H		0.070

SURFACE FINISH <input checked="" type="checkbox"/> UNLESS OTHERWISE SPECIFIED		UNLESS OTHERWISE SPECIFIED DIMENSIONS ARE IN INCHES		APPROVALS	DATE	 ELECTRO MECHANICAL INDUSTRIES, INC. 11230 NEESESHAW DRIVE HOUSTON, TEXAS 77065 1-800-453-0050
MATERIAL SEE PARTS LIST		TOLERANCES .0 ± .06 .00 ± .015 .000 ± .005 FRACTIONS ± 1/16 ANGLES ± .25° HOLES: DRILLED OR PUNCHED ± 1/32 BURNED ± 1/32		DRAWN J. ROACH	2/17/2023	
THIRD ANGLE PROJECTION 				CHECKER B. HUTSON	2/23/2023	SIZE <b>B</b>
NEXT ASSY		USED ON		ENGINEER J. Breen	2/27/2023	
APPLICATIONS				PRODUCTION J. KERNER	2/27/2023	REV <b>0</b>
				SCALE: 1:16		WEIGHT: 189.91 lbs. SHEET 1 OF 1




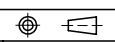
THE INFORMATION CONTAINED IN THIS DRAWING IS THE SOLE PROPERTY OF ELECTRO MECHANICAL INDUSTRIES, INC. ANY REPRODUCTION IN PART OR WHOLE WITHOUT THE WRITTEN PERMISSION OF ELECTRO MECHANICAL IND., IS PROHIBITED.

REVISIONS					
REV.	DCN #	DESCRIPTION	DATE	BY	APPROVED
1	01219	VISUAL UPDATE FOR LOWER LEVEL CHANGES.	02/16/2023	JTR	JPB

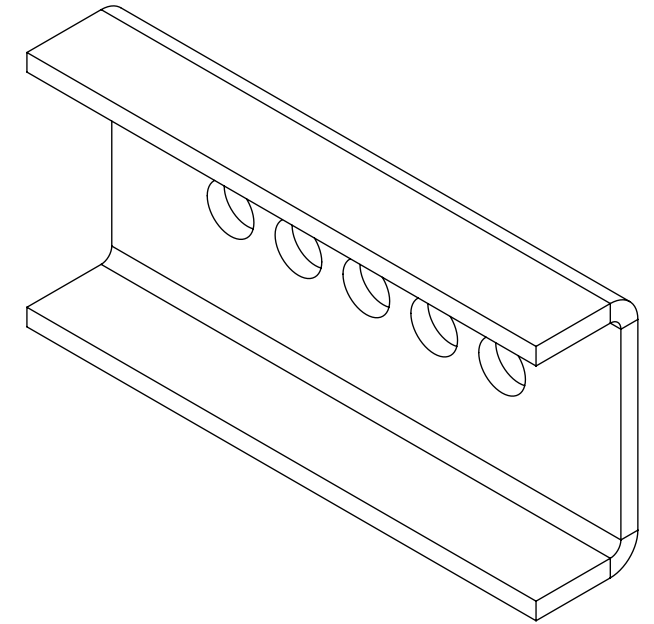
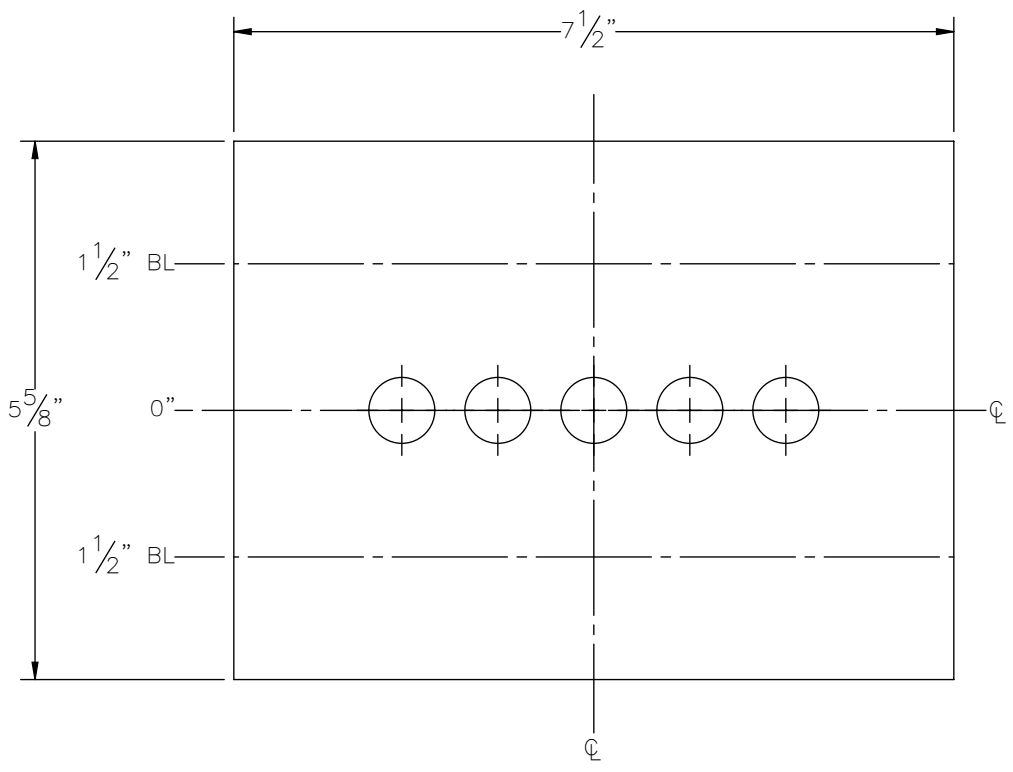
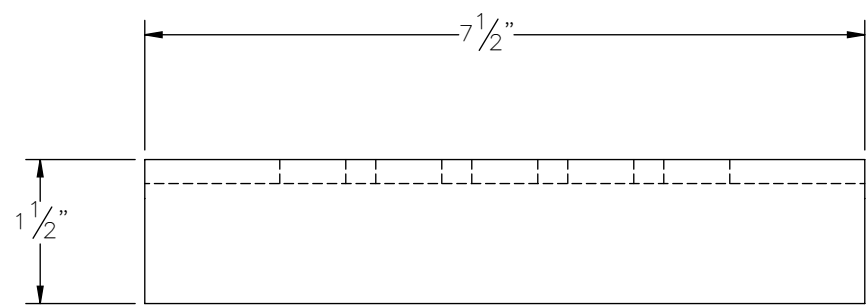


- NOTES:  
 UNLESS OTHERWISE SPECIFIED,  
 1. ALL WELDING PER AWS D1.1, FCAW, E7XT-1 AND GMAW, ER70S-6 ELECTRODES.  
 2. SQUARENESS OF WELDED COMPONENTS TO BE WITHIN  $\pm 1/16$ ".  
 3. ALL WELDS  $3/16$ " FILLET OR SEAM WELDS ALL AROUND AS APPLICABLE PER JOINT.  
 4. ALL CAPTIVE TUBES MUST HAVE MIN. TWO WEEP HOLES (ONE UPPER, ONE LOWER)  $7/16$ " DIA.  
 5. GALVANIZE PER ASTM A123.

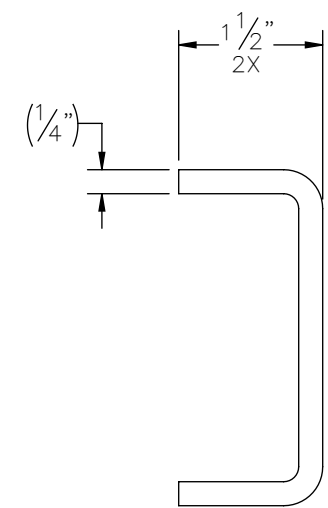
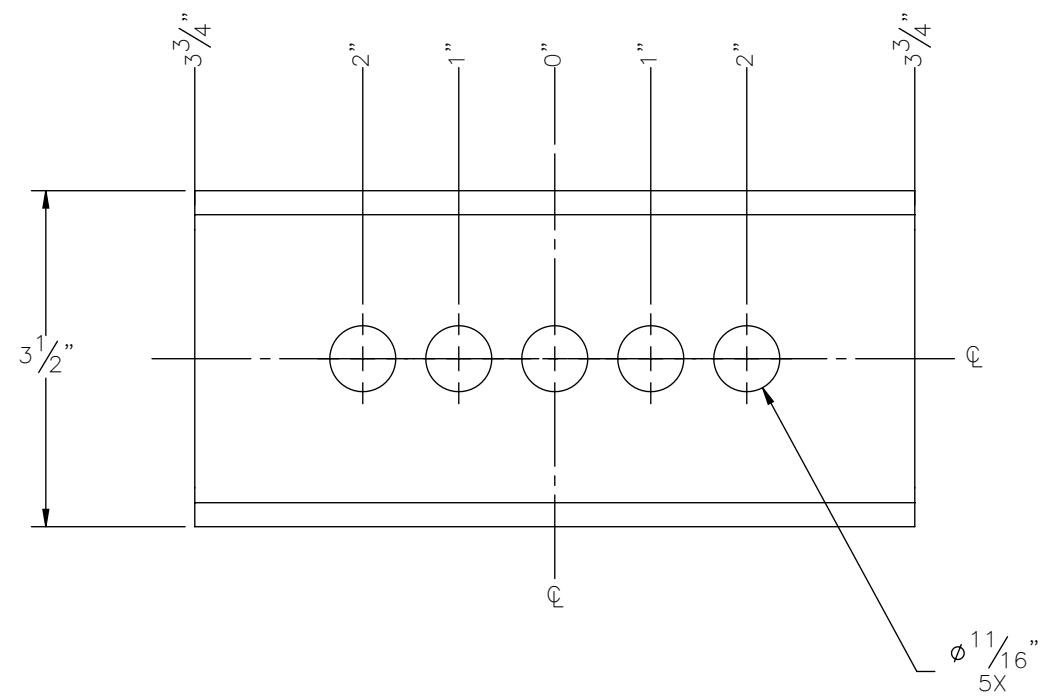
ITEM NO.	QTY REQD	PART NUMBER	DESCRIPTION	LENGTH	WEIGHT
1	1	P-005-095	SECTOR CLAMP BRACKET		10.86
2	2	P-005-096	PIVOT CHANNEL		2.93

SURFACE FINISH <input checked="" type="checkbox"/> UNLESS OTHERWISE SPECIFIED		UNLESS OTHERWISE SPECIFIED DIMENSIONS ARE IN INCHES		APPROVALS		DATE		 ELECTRO MECHANICAL INDUSTRIES, INC. 11230 NEESEAW DRIVE HOUSTON, TEXAS 77065 1-800-453-0050	
MATERIAL SEE PARTS LIST		TOLERANCES		DRAWN C. SANCHEZ		10/25/2021			
THIRD ANGLE PROJECTION 		.0 ±.06 .00 ±.015 .000 ±.005		CHECKER J. ROACH		10/26/2021		TITLE: <h3>CLAMP BRACKET WELDMENT</h3>	
NEXT ASSY		DRILLED OR PUNCHED		ENGINEER J. BREEN		10/26/2021			
USED ON		HOLES: ±1/32		PRODUCTION J. LEE		10/26/2021			
APPLICATIONS		BURNED ±1/32		SCALE: 1:4		WEIGHT: 16.73 lbs.		SHEET 1 OF 1	


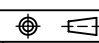
THE INFORMATION CONTAINED IN THIS DRAWING IS THE SOLE PROPERTY OF ELECTRO MECHANICAL INDUSTRIES, INC. ANY REPRODUCTION IN PART OR WHOLE WITHOUT THE WRITTEN PERMISSION OF ELECTRO MECHANICAL IND., IS PROHIBITED.



FLAT PATTERN

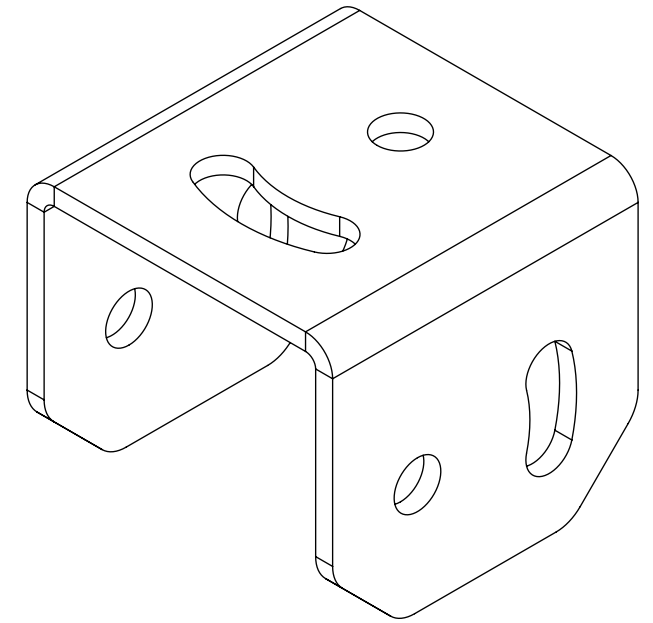
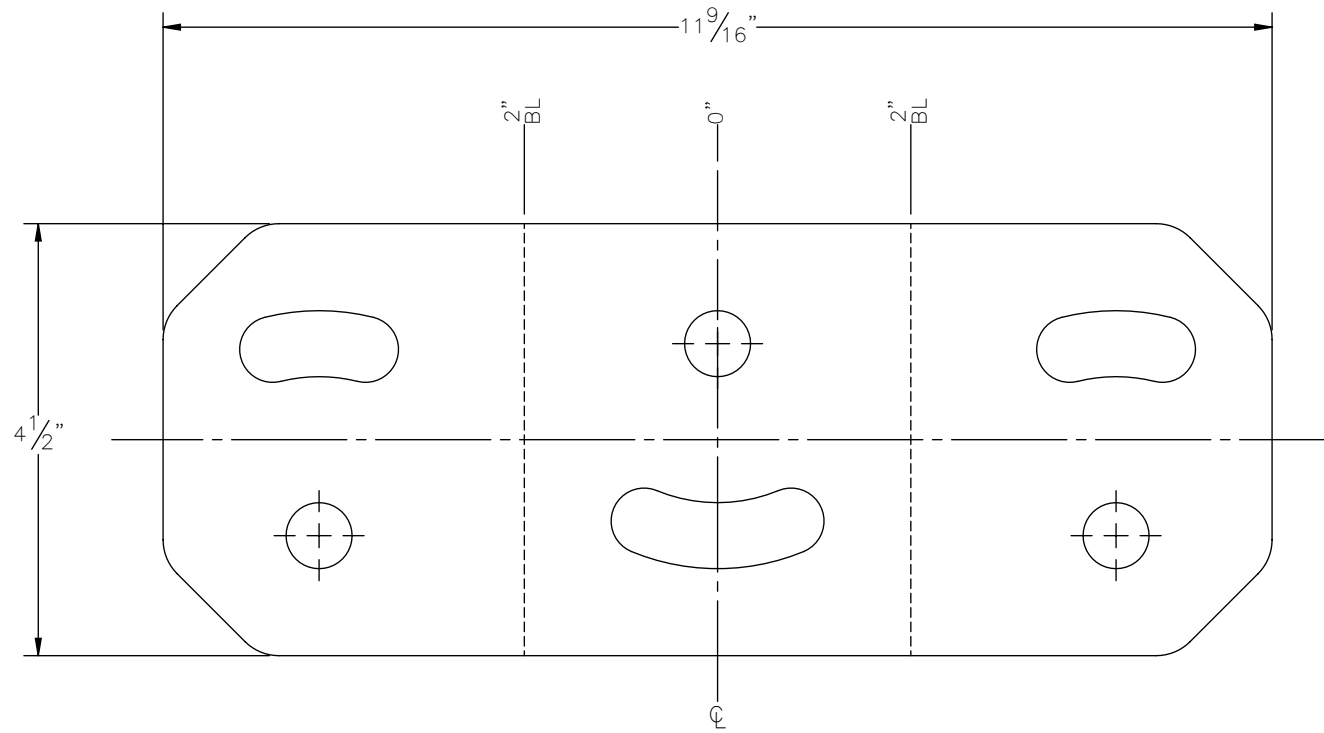
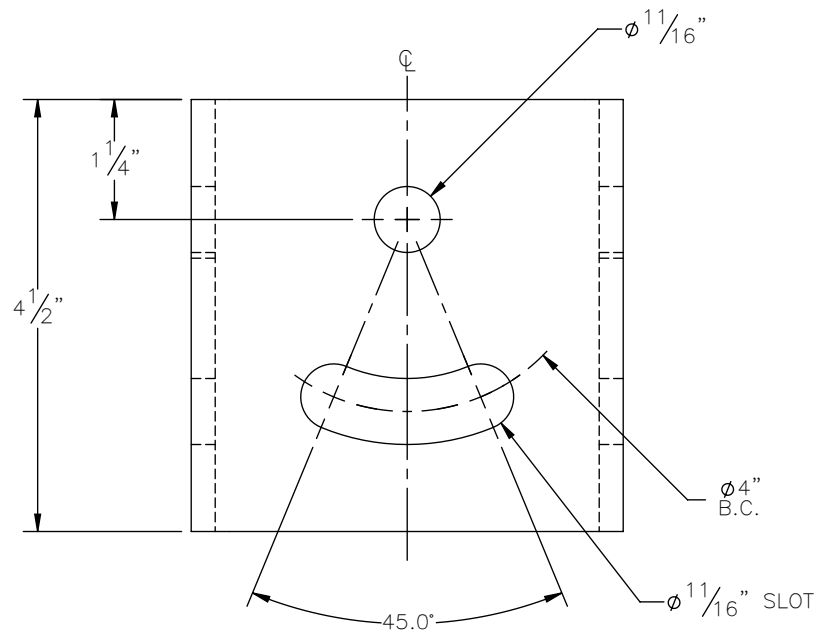


NOTE:  
FORM FLAT PATTERN WITH P7 TOP TOOL, V24/30 BOTTOM TOOL, AND .446 BEND DEDUCTION, CONTACT SUPERVISOR IF TOOLING UNAVAILABLE.

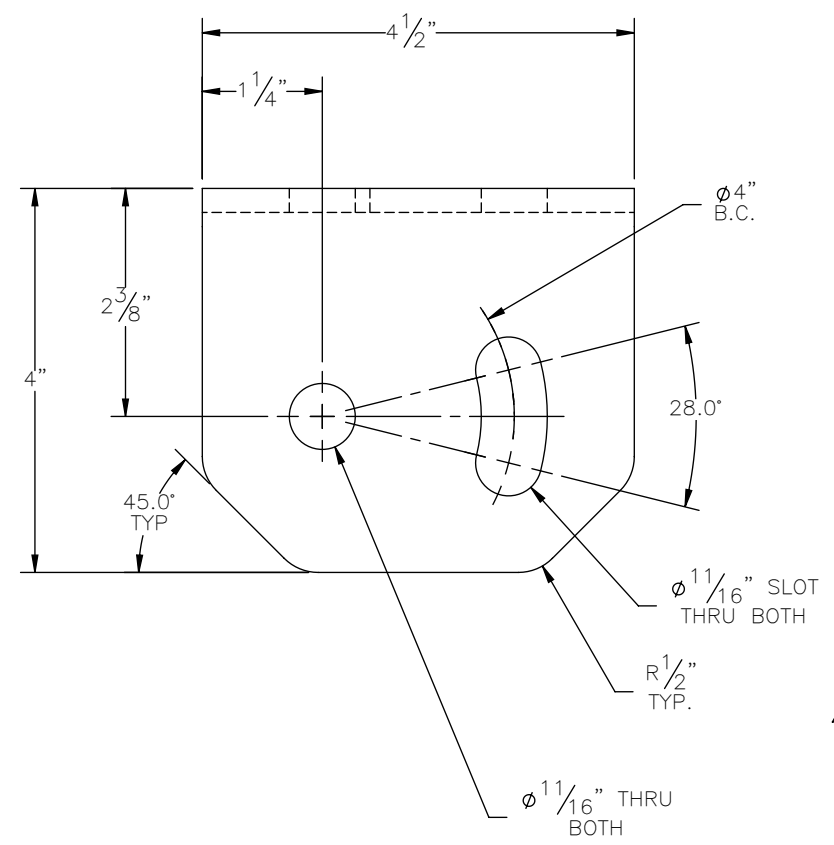
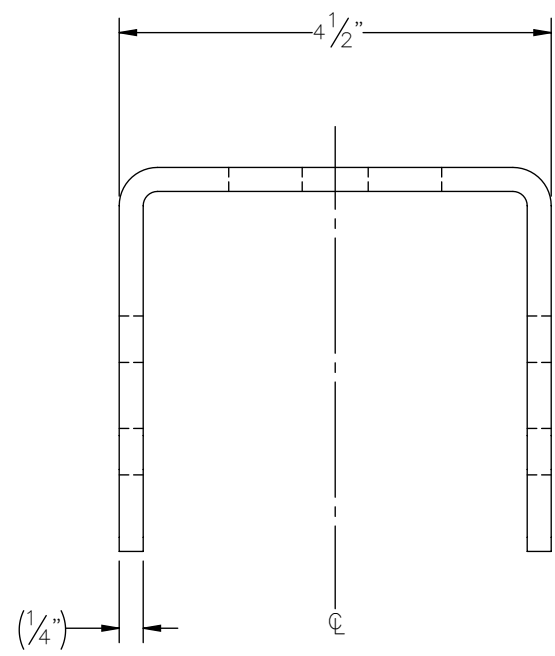
ITEM NO.	QTY REQD	PART NUMBER	DESCRIPTION	LENGTH	WEIGHT	
1	1	PL1-016E	PLATE 1/4" X 5 5/8" X 7 1/2" ASTM A572 GR 50 STL	7 1/2"	2.93	
SURFACE FINISH		UNLESS OTHERWISE SPECIFIED	APPROVALS	DATE	 ELECTRO MECHANICAL INDUSTRIES, INC. 11230 NEESESHAW DRIVE HOUSTON, TEXAS 77065 1-800-453-0050	
MATERIAL		ASTM A572 GR 50 STL	DRAWN	C. SANCHEZ		10/25/2021
THIRD ANGLE PROJECTION			CHECKER	J. ROACH		10/26/2021
NEXT ASSY		USED ON	ENGINEER	J. BREEN		10/26/2021
APPLICATIONS		BURNED	PRODUCTION	J. LEE	10/26/2021	
TOLERANCES		UNLESS OTHERWISE SPECIFIED DIMENSIONS ARE IN INCHES	DIMENSIONS: ±.06 FRACTIONS: ±1/16 ANGLES: ±.25° HOLES: DRILLED OR PUNCHED ±1/32 BURNED ±1/32		TITLE: <b>PIVOT CHANNEL</b>	
SCALE: 1:2		WEIGHT: 2.93 lbs.	SIZE B	DRAWING NO. P-005-096	REV 0	
SHEET 1 OF 1						

THE INFORMATION CONTAINED IN THIS DRAWING IS THE SOLE PROPERTY OF ELECTRO MECHANICAL INDUSTRIES, INC. ANY REPRODUCTION IN PART OR WHOLE WITHOUT THE WRITTEN PERMISSION OF ELECTRO MECHANICAL IND., IS PROHIBITED.

REVISIONS					
REV.	DCN #	DESCRIPTION	DATE	BY	APPROVED
1	01180	UPDATED BEND DEDUCTION VALUES & FLAT PATTERN	8.30..22	CS	JPB



△ FLAT PATTERN



NOTES:  
 1. FORM FLAT PATTERN WITH P7 TOP TOOL, V50/60 BOTTOM TOOL, AND .474 BEND DEDUCTION, △  
 CONTACT SUPERVISOR IF TOOLING UNAVAILABLE.  
 2. GALVANIZE PER ASTM A123.

ITEM NO.	QTY REQD	PART NUMBER	DESCRIPTION	LENGTH	WEIGHT
1	1	PL1-016E	PLATE 1/4" X 4 1/2" X 11 9/16" ASTM A572 GR 50 STL	11 9/16"	3.28

SURFACE FINISH <input checked="" type="checkbox"/> UNLESS OTHERWISE SPECIFIED		UNLESS OTHERWISE SPECIFIED DIMENSIONS ARE IN INCHES		APPROVALS		DATE	ELECTRO MECHANICAL INDUSTRIES, INC. 11230 NEESESHAW DRIVE HOUSTON, TEXAS 77065 1-800-453-0050
MATERIAL	ASTM A572 GR 50 STL	TOLERANCES		DRAWN	C. SANCHEZ	10/22/2021	
THIRD ANGLE PROJECTION		.0 ±.06 .00 ±.015 .000 ±.005		CHECKER	B. HUTSON	10/25/2021	
		FRACTIONS ± 1/16 ANGLES ± .25°		ENGINEER	J. BREEN	10/25/2021	
		HOLES: DRILLED OR PUNCHED ± 1/32 BURNED ± 1/32		PRODUCTION	J. LEE	10/26/2021	

NEXT ASSY		USED ON	APPLICATIONS
-----------	--	---------	--------------

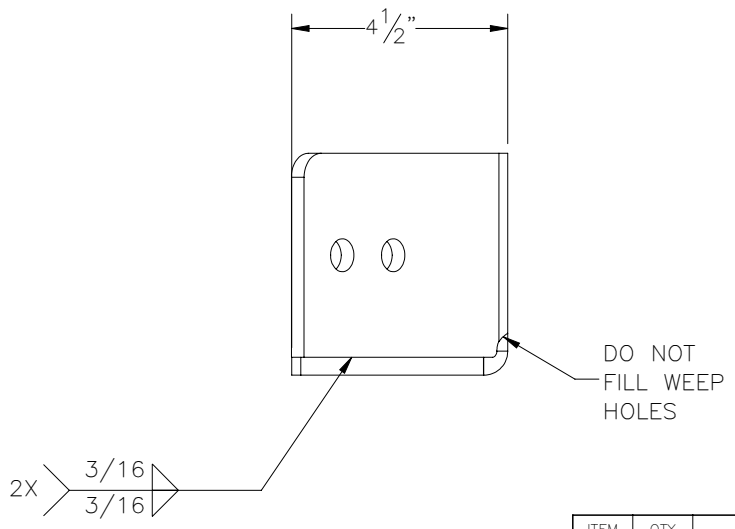
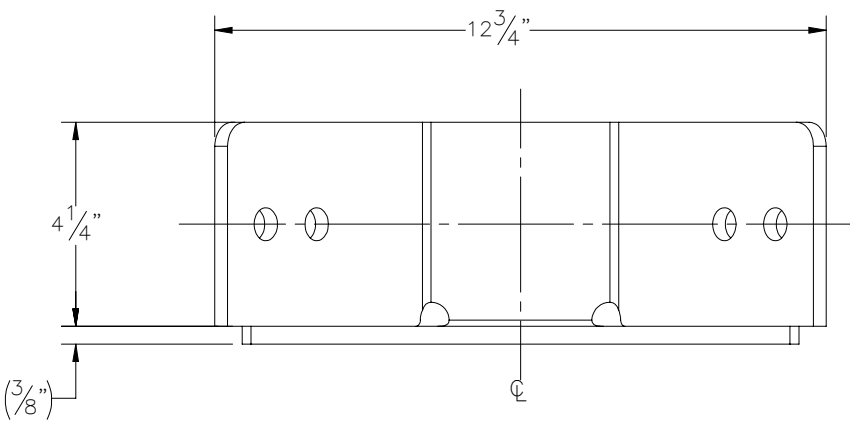
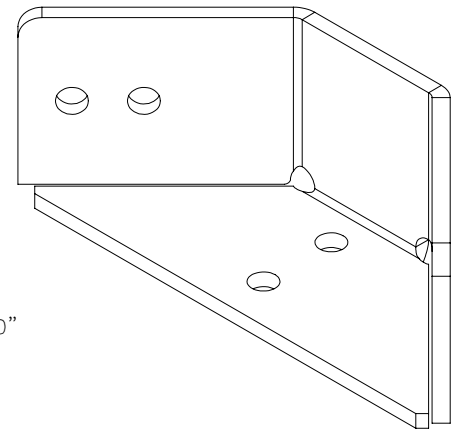
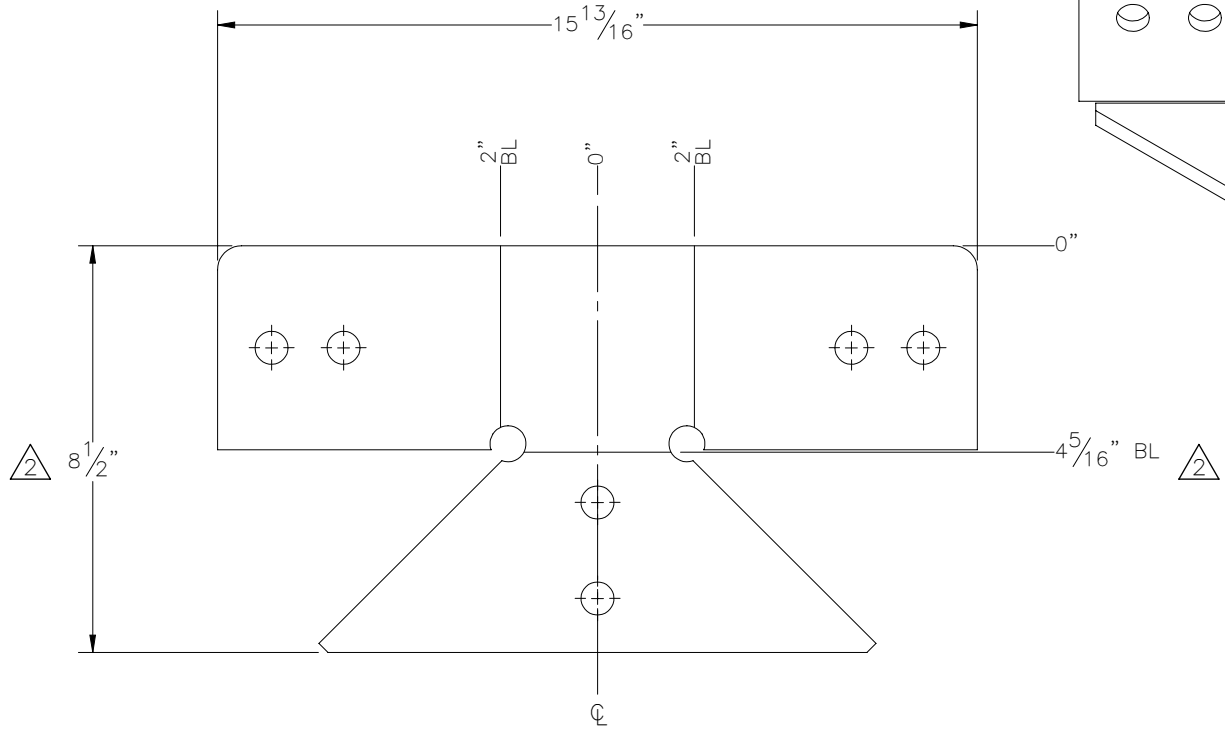
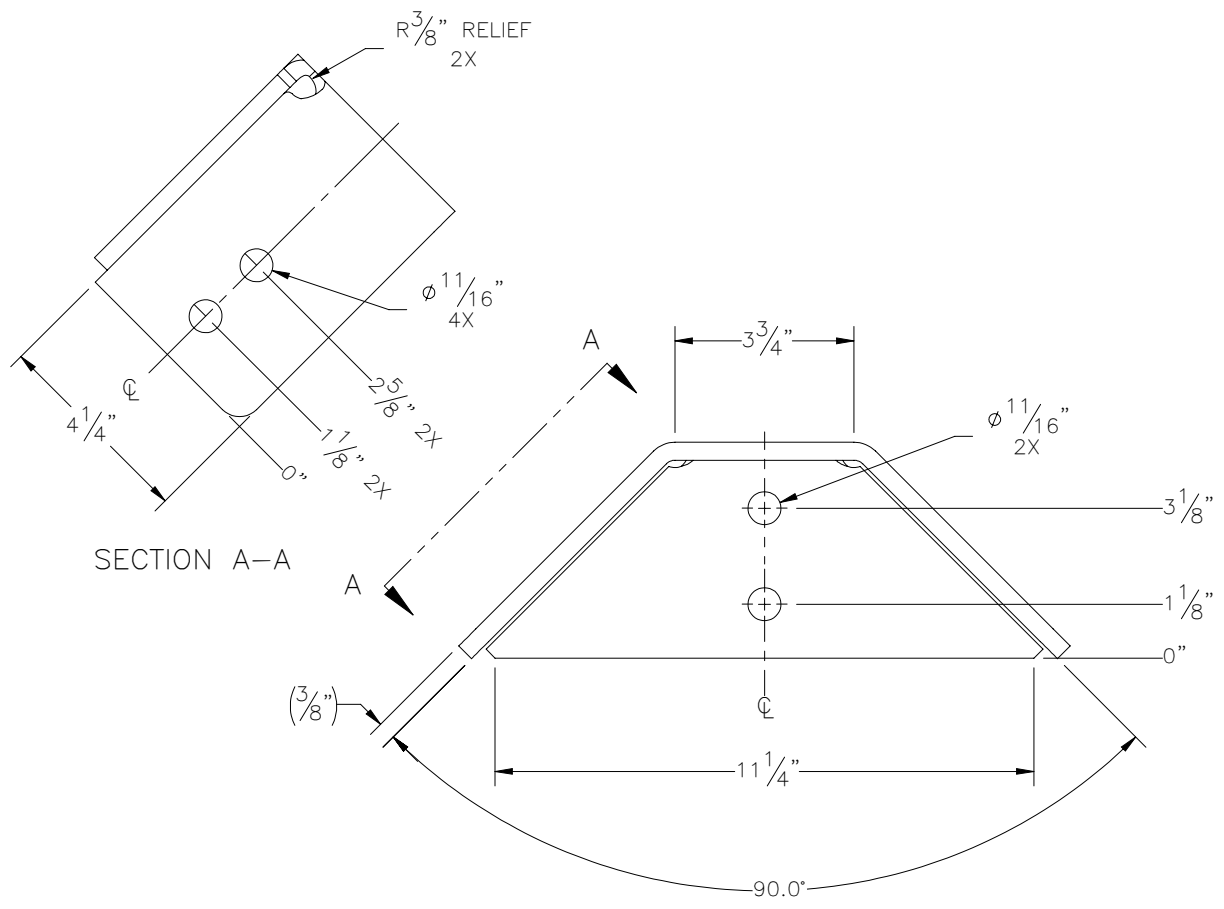
SIZE	DRAWING NO.	REV
B	P-005-098	1

SCALE: 1:2	WEIGHT: 3.28 lbs.	SHEET 1 OF 1
------------	-------------------	--------------

THE INFORMATION CONTAINED IN THIS DRAWING IS THE SOLE PROPERTY OF ELECTRO MECHANICAL INDUSTRIES, INC. ANY REPRODUCTION IN PART OR WHOLE WITHOUT THE WRITTEN PERMISSION OF ELECTRO MECHANICAL IND., IS PROHIBITED.

REVISIONS					
REV.	DCN #	DESCRIPTION	DATE	BY	APPROVED
2	01219	8-1/2 WAS 8-7/16, 4-5/16 WAS 4-1/4, UPDATED BEND NOTES TO LATEST STANDARD.	02/21/2023	JTR	JPB



- NOTES:
- UNLESS OTHERWISE SPECIFIED, FORM FLAT PATTERN WITH P7 TOP TOOL, V60/60 BOTTOM TOOL, AND 90 DEG .653 BEND DEDUCTION, 45 DEG .209 BEND DEDUCTION, CONTACT SUPERVISOR IF TOOLING UNAVAILABLE.
  - ALL WELDING PER AWS D1.1, FCAW, E7XT-1 AND GMAW, ER70S-6 ELECTRODES.
  - SQUARENESS OF WELDED COMPONENTS TO BE WITHIN  $\pm 1/16$ ".
  - ALL WELDS 3/16" FILLET OR SEAM WELDS ALL AROUND AS APPLICABLE PER JOINT.
  - GALVANIZE PER ASTM A123.

ITEM NO.	QTY REQD	PART NUMBER	DESCRIPTION	LENGTH	WEIGHT
1	1	PL1-024A	PLATE 3/8" X 8 1/2" X 15 13/16" ASTM A36 STL	15 13/16"	10.37

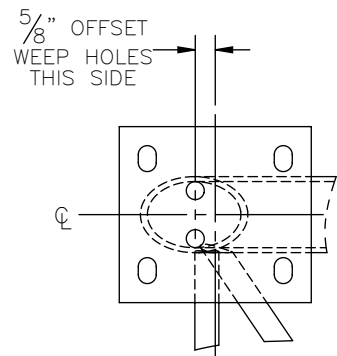
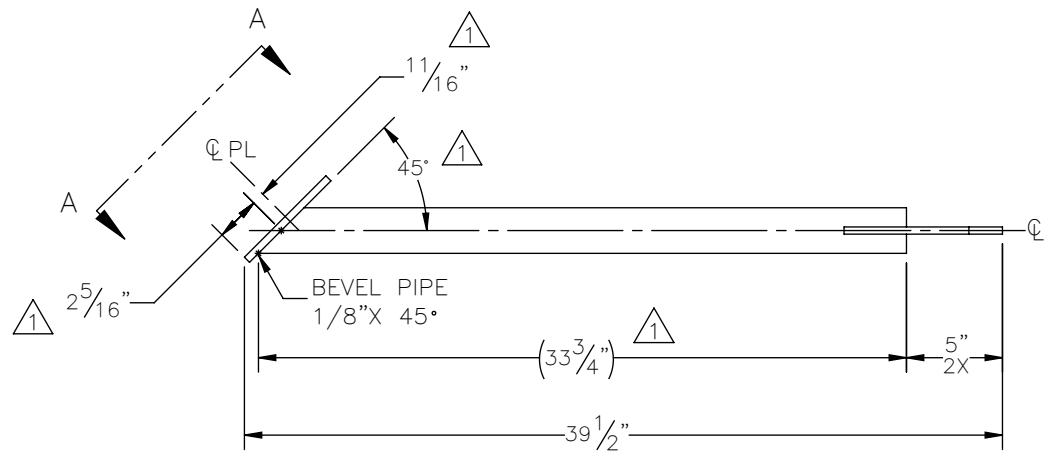
  

SURFACE FINISH <input checked="" type="checkbox"/> UNLESS OTHERWISE SPECIFIED		UNLESS OTHERWISE SPECIFIED DIMENSIONS ARE IN INCHES		APPROVALS		DATE	
MATERIAL ASTM A36 STL		TOLERANCES		DRAWN C. SANCHEZ		10/25/2021	
THIRD ANGLE PROJECTION		.0 ±.06 .00 ±.015 .000 ±.005		CHECKER J. ROACH		10/26/2021	
NEXT ASSY		DRILLED OR PUNCHED		ENGINEER J. BREEN		10/26/2021	
USED ON		HOLES: ±1/32		PRODUCTION J. LEE		10/26/2021	
APPLICATIONS		BURNED ±1/32		TITLE: CORNER BRACKET		SCALE: 1:4	
				SIZE B		DRAWING NO. P-005-097	
				WEIGHT: 10.37 lbs.		REV 2	
				SHEET 1 OF 1			

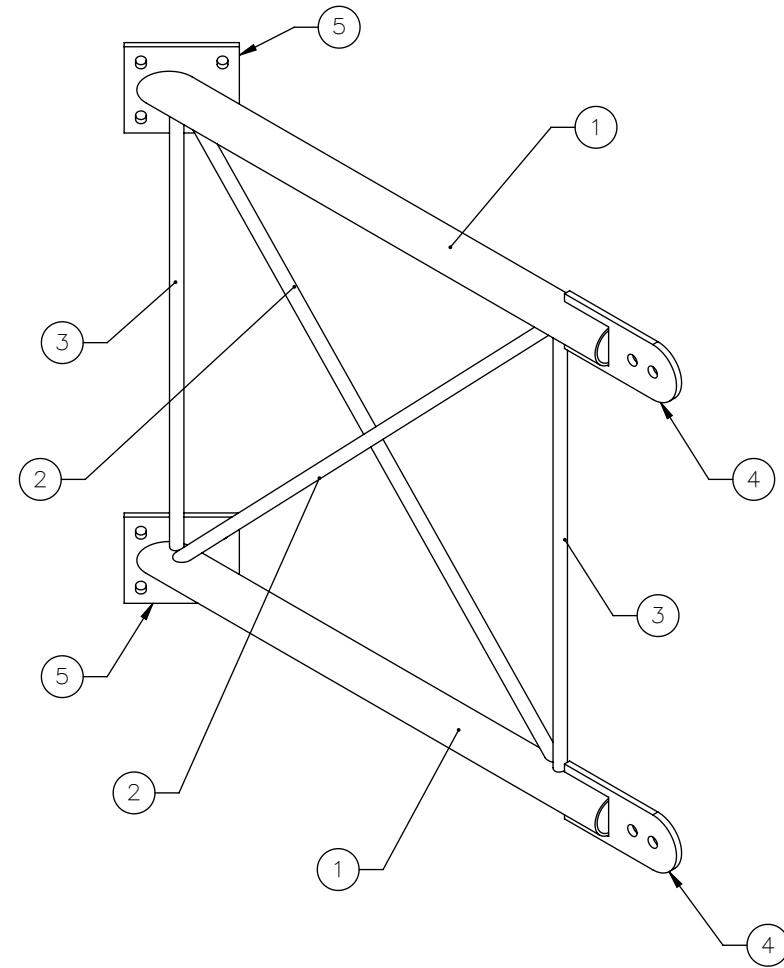
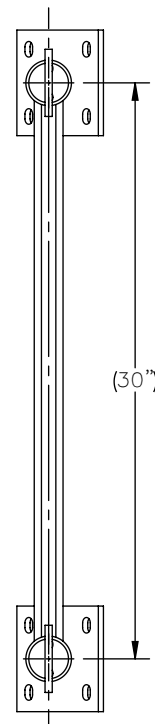
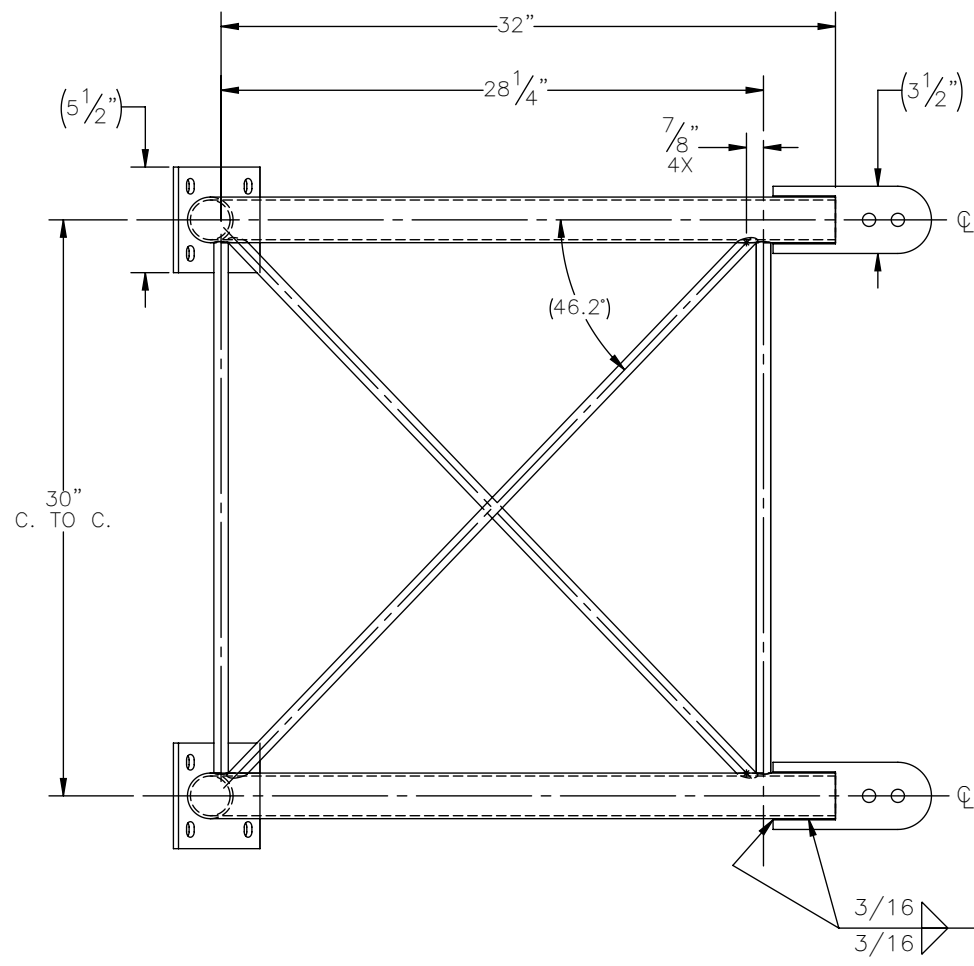


THE INFORMATION CONTAINED IN THIS DRAWING IS THE SOLE PROPERTY OF ELECTRO MECHANICAL INDUSTRIES, INC. ANY REPRODUCTION IN PART OR WHOLE WITHOUT THE WRITTEN PERMISSION OF ELECTRO MECHANICAL IND., IS PROHIBITED.

REVISIONS					
REV.	DCN #	DESCRIPTION	DATE	BY	APPROVED
1	01180	ADJUST CUTLIST LENGTH FOR PIPE, LENGTH WAS 33 5/8", ADD DIMS FOR CLARITY	8.30.22	CS	JPB



SECTION A-A  
DETAIL 2X



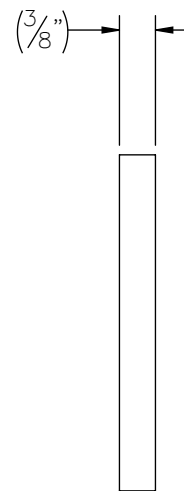
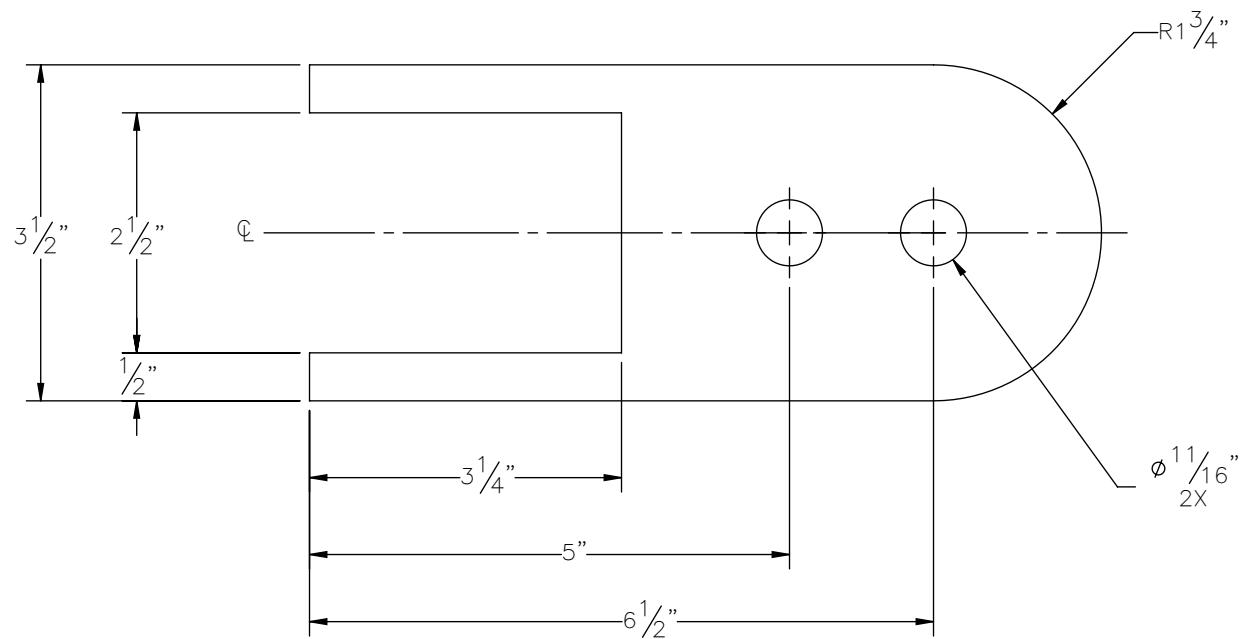
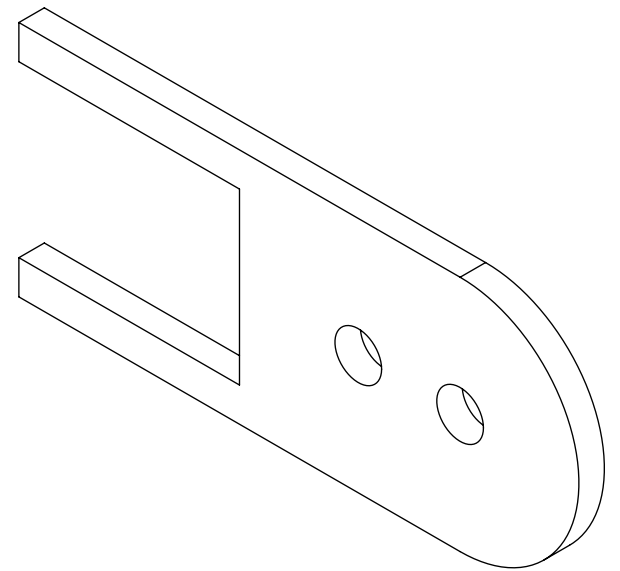
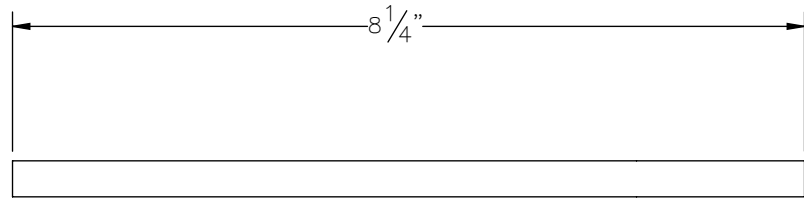
- NOTES:  
UNLESS OTHERWISE SPECIFIED,  
1. ALL WELDING PER AWS D1.1, FCAW, E7XT-1 AND GMAW, ER70S-6 ELECTRODES.  
2. SQUARENESS OF WELDED COMPONENTS TO BE WITHIN +/- 1/16".  
3. ALL WELDS 3/16" FILLET OR SEAM WELDS ALL AROUND AS APPLICABLE PER JOINT.  
4. ALL CAPTIVE TUBES MUST HAVE MIN. TWO WEEP HOLES (ONE UPPER, ONE LOWER) 7/16" DIA.  
5. GALVANIZE PER ASTM A123.

3 SIDES  
WRAP WELD  
ON ENDS  
4X

ITEM NO.	QTY REQD	PART NUMBER	DESCRIPTION	LENGTH	WEIGHT
1	2	W-002-240_1	PIPE, 2.00 INCH, SCH. 40, ASTM A500 GR. B STL., PP1-0200-S40M	33 3/4"	9.92
2	2	W-002-240_2	ROUND BAR, .75 DIA., ASTM A36 STL., RB1-0048A	39 5/16"	4.82
3	2	W-002-240_3	ROUND BAR, .75 DIA., ASTM A36 STL., RB1-0048A	27 3/4"	3.46
4	2	P-005-187	PIN PLATE		1.99
5	2	P-005-188	U-BOLT PLATE, SECTOR FRAME		3.29

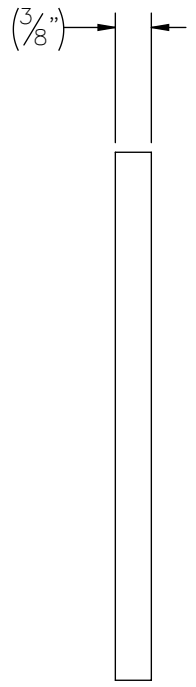
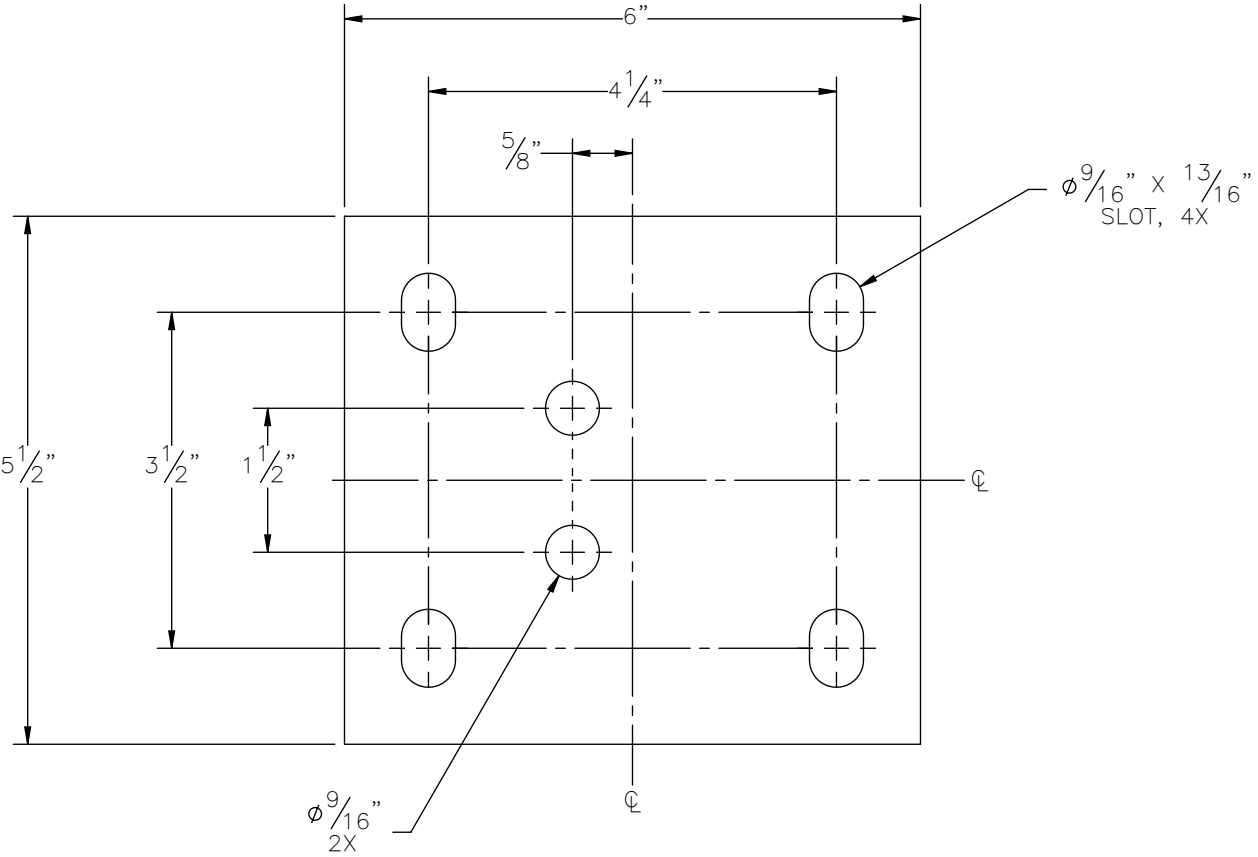
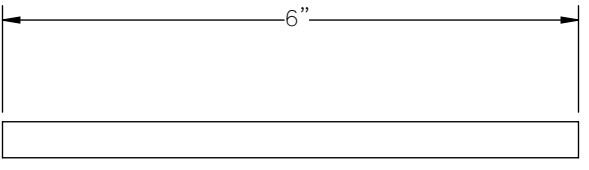
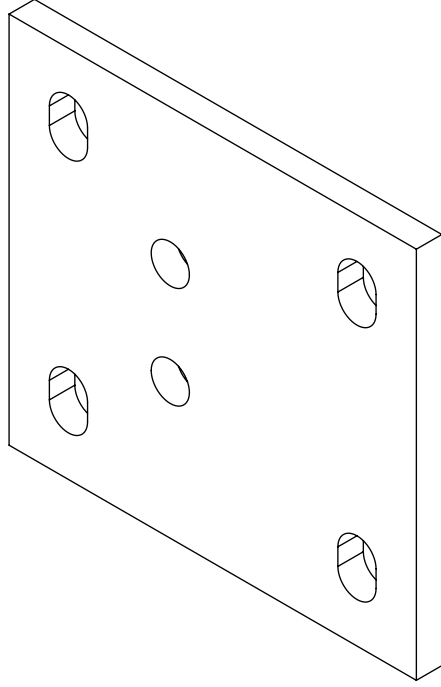
SURFACE FINISH		UNLESS OTHERWISE SPECIFIED	UNLESS OTHERWISE SPECIFIED DIMENSIONS ARE IN INCHES		APPROVALS		DATE	ELECTRO MECHANICAL INDUSTRIES, INC. 11230 NEESEHAW DRIVE HOUSTON, TEXAS 77065 1-800-453-0050		
MATERIAL		SEE PARTS LIST	TOLERANCES		DRAWN		10/25/2021	TITLE:		
THIRD ANGLE PROJECTION			.0 ±.06 .00 ±.015 .000 ±.005		CHECKER		10/25/2021	SECTOR FRAME WELDMENT		
NEXT ASSY		USED ON	FRACTIONS ± 1/16 ANGLES ±.25°		ENGINEER		10/26/2021	SIZE		
APPLICATIONS			HOLES:		PRODUCTION		10/26/2021	DRAWING NO.		
			DRILLED OR PUNCHED ±1/32 BURNED ±1/32		J. LEE			W-002-240		
								REV		
								1		
					SCALE: 1:10		WEIGHT: 46.97 lbs.		SHEET 1 OF 1	


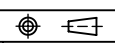
THE INFORMATION CONTAINED IN THIS DRAWING IS THE SOLE PROPERTY OF ELECTRO MECHANICAL INDUSTRIES, INC. ANY REPRODUCTION IN PART OR WHOLE WITHOUT THE WRITTEN PERMISSION OF ELECTRO MECHANICAL IND., IS PROHIBITED.



ITEM NO.	QTY REQD	PART NUMBER	DESCRIPTION	LENGTH	WEIGHT
1	1	PL1-024E	PLATE 3/8" X 3 1/2" X 8 1/4" ASTM A572 GR 50 STL	8 1/4"	1.99
SURFACE FINISH		UNLESS OTHERWISE SPECIFIED	UNLESS OTHERWISE SPECIFIED DIMENSIONS ARE IN INCHES	APPROVALS	DATE
MATERIAL		ASTM A572 GR 50 STL	TOLERANCES	DRAWN	10/25/2021
THIRD ANGLE PROJECTION		.0 ± .06 .00 ± .015 .000 ± .005	FRACTIONS ± 1/16	CHECKER	10/25/2021
NEXT ASSY		USED ON	ANGLES ± .25°	ENGINEER	10/26/2021
APPLICATIONS		DRILLED OR PUNCHED	HOLES: ± 1/32	PRODUCTION	10/26/2021
		BURNED	± 1/32	J. LEE	
ELECTRO MECHANICAL INDUSTRIES, INC. 11230 NEESESHAW DRIVE HOUSTON, TEXAS 77065 1-800-453-0050				TITLE:	
				PIN PLATE	
SCALE: 1:2		WEIGHT: 1.99 lbs.		SIZE B	REV 0
				DRAWING NO. P-005-187	SHEET 1 OF 1

THE INFORMATION CONTAINED IN THIS DRAWING IS THE SOLE PROPERTY OF ELECTRO MECHANICAL INDUSTRIES, INC. ANY REPRODUCTION IN PART OR WHOLE WITHOUT THE WRITTEN PERMISSION OF ELECTRO MECHANICAL IND., IS PROHIBITED.

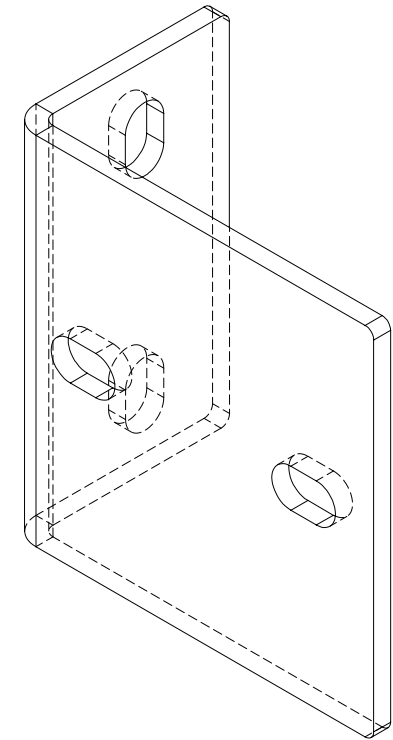
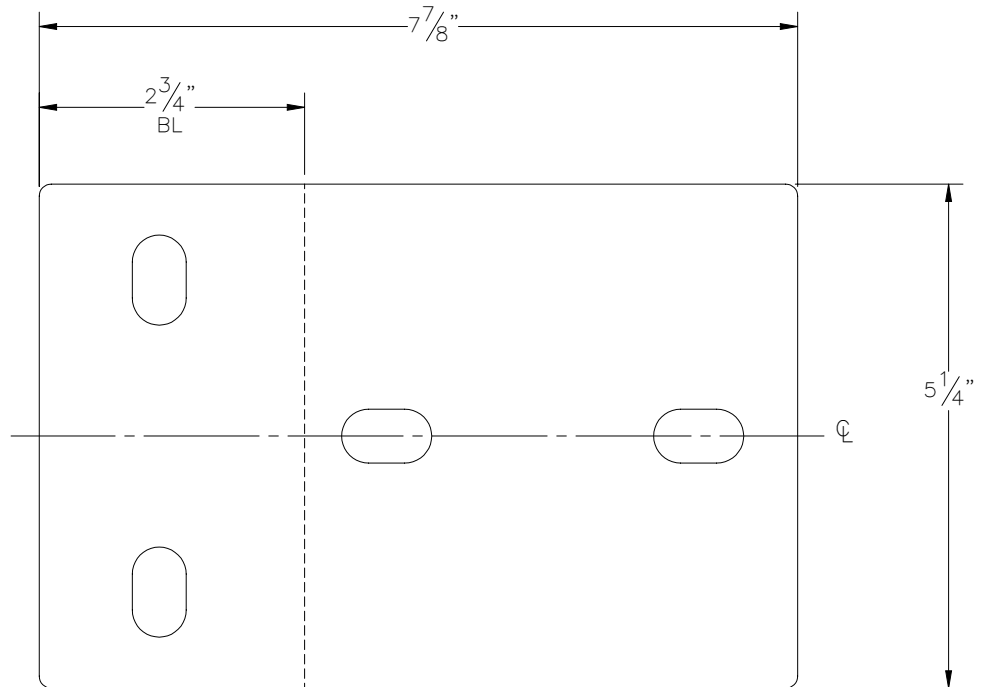
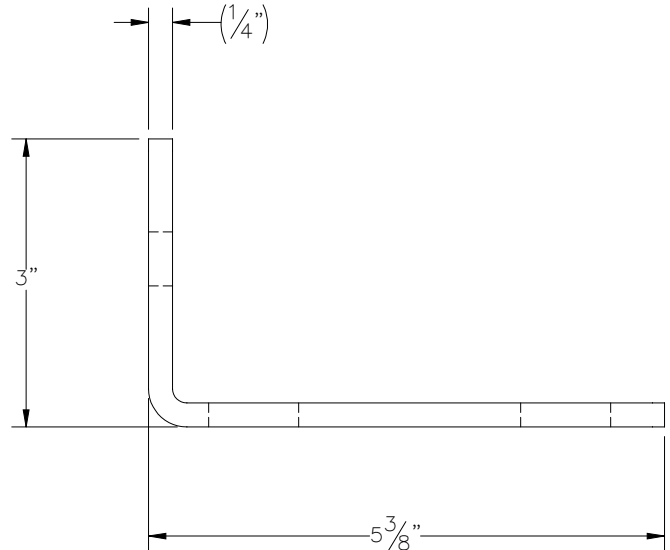


ITEM NO.	QTY REQD	PART NUMBER	DESCRIPTION	LENGTH	WEIGHT	
1	1	PL1-024E	PLATE 3/8" X 5 1/2" X 6" ASTM A572 GR 50 STL	6"	3.29	
SURFACE FINISH		UNLESS OTHERWISE SPECIFIED	APPROVALS	DATE	 ELECTRO MECHANICAL INDUSTRIES, INC. 11230 NEESESHAW DRIVE HOUSTON, TEXAS 77065 1-800-453-0050	
MATERIAL		ASTM A572 GR 50 STL	DRAWN	C. SANCHEZ		10/25/2021
THIRD ANGLE PROJECTION			CHECKER	J. ROACH		10/25/2021
NEXT ASSY		USED ON	ENGINEER	J. BREEN		10/26/2021
APPLICATIONS		BURNED	HOLES:	DRILLED OR PUNCHED	±1/32	
				PRODUCTION	J. LEE	10/26/2021
			SIZE	DRAWING NO.	REV	
			B	P-005-188	0	
			SCALE:	1:2	WEIGHT: 3.29 lbs.	
					SHEET 1 OF 1	

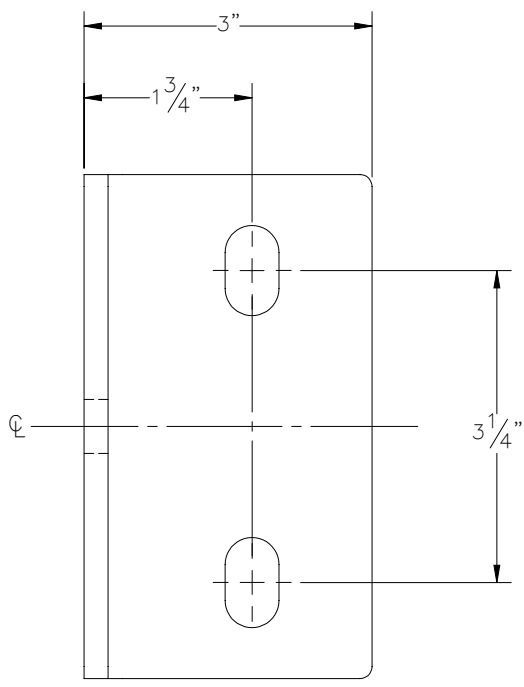
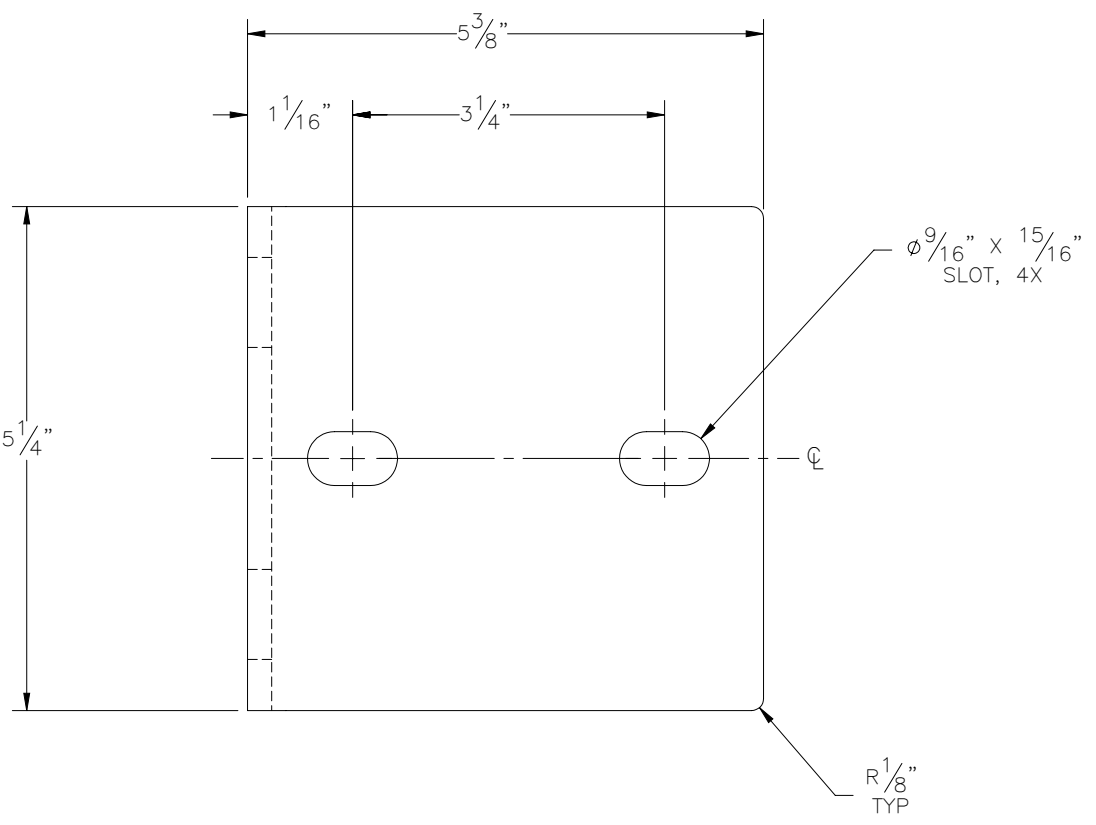
TITLE: U-BOLT PLATE, SECTOR FRAME

THE INFORMATION CONTAINED IN THIS DRAWING IS THE SOLE PROPERTY OF ELECTRO MECHANICAL INDUSTRIES, INC. ANY REPRODUCTION IN PART OR WHOLE WITHOUT THE WRITTEN PERMISSION OF ELECTRO MECHANICAL IND., IS PROHIBITED.

REVISIONS					
REV.	DCN #	DESCRIPTION	DATE	BY	APPROVED
2	01180	RAW BOM UPDATED TO CALLOUT CORRECT MATERIAL (A572).	09/09/2022	JTR	JPB



FLAT PATTERN



- NOTES:
- FORM FLAT PATTERN WITH P7 TOP TOOL, V50/60 BOTTOM TOOL, AND .474 BEND DEDUCTION, CONTACT SUPERVISOR IF TOOLING UNAVAILABLE.
  - GALVANIZE PER ASTM A123

ITEM NO.	QTY REQD	PART NUMBER	DESCRIPTION	LENGTH	WEIGHT
1	1	PL1-016E	PLATE 1/4" X 5 1/4" X 7 7/8" ASTM A572 GR 50 STL	7 7/8"	2.85

SURFACE FINISH <input checked="" type="checkbox"/> UNLESS OTHERWISE SPECIFIED		UNLESS OTHERWISE SPECIFIED DIMENSIONS ARE IN INCHES		APPROVALS		DATE	
MATERIAL SEE PARTS LIST		TOLERANCES		DRAWN C. SANCHEZ		10/20/2021	
THIRD ANGLE PROJECTION		.0 ±.06 .00 ±.015 .000 ±.005		CHECKER B. HUTSON		10/20/2021	
NEXT ASSY		FRAGMENTS ± 1/16		ENGINEER J. BREEN		10/21/2021	
USED ON		ANGLES ± .25°		PRODUCTION J. LEE		10/21/2021	
APPLICATIONS		HOLES: DRILLED OR PUNCHED +1/32		SIZE B		DRAWING NO. P-005-069	
		BURNED ±1/32		SCALE: 1:2		WEIGHT: 2.85 lbs.	
						REV 2	
						SHEET 1 OF 1	

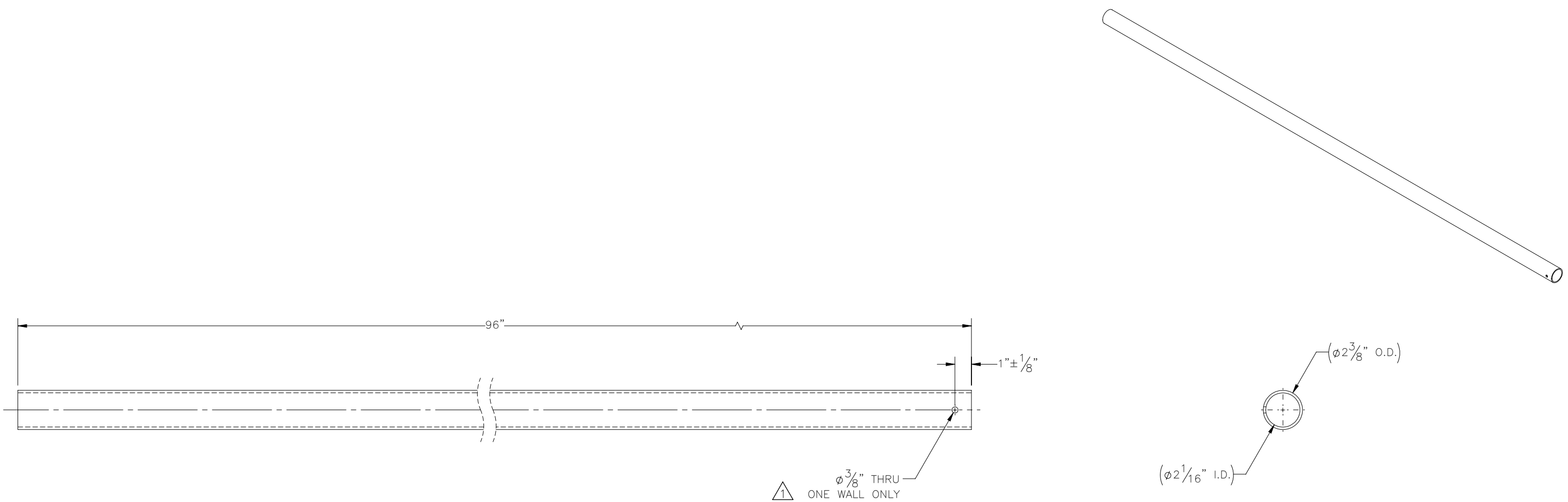


PIPE STANDOFF BRACKET



THE INFORMATION CONTAINED IN THIS DRAWING IS THE SOLE PROPERTY OF ELECTRO MECHANICAL INDUSTRIES, INC. ANY REPRODUCTION IN PART OR WHOLE WITHOUT THE WRITTEN PERMISSION OF ELECTRO MECHANICAL IND., IS PROHIBITED.


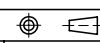
REVISIONS					
REV.	DCN #	DESCRIPTION	DATE	BY	APPROVED
1	01219	Ø3/8" HOLE FOR HANGING ADDED.	02/16/2023	JTR	JPB



NOTES:  
1. GALVANIZE PER ASTM A123

ITEM NO.	QTY REQD	PART NUMBER	DESCRIPTION	LENGTH	WEIGHT
1	1	PP1-0200-S40M	PIPE, 2.00 INCH, SCH. 40, ASTM A500 GR. B STL., PP1-0200-S40M	96"	29.25

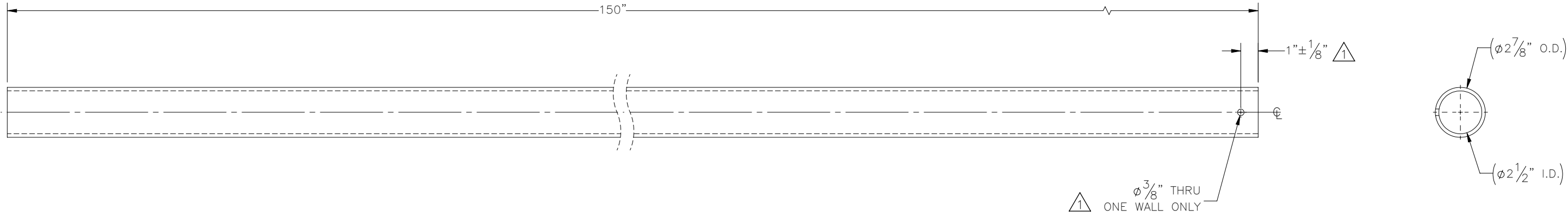
SURFACE FINISH	UNLESS OTHERWISE SPECIFIED	UNLESS OTHERWISE SPECIFIED DIMENSIONS ARE IN INCHES	APPROVALS	DATE	 ELECTRO MECHANICAL INDUSTRIES, INC. 11230 NEESESHAW DRIVE HOUSTON, TEXAS 77065 1-800-453-0050
MATERIAL	ASTM A500 GR B STL	TOLERANCES	DRAWN	8/30/2022	
THIRD ANGLE PROJECTION		FRACTIONS ± 1/16	CHECKER	9/9/2022	
		ANGLES ± .25°	ENGINEER	9/9/2022	
		HOLES: DRILLED OR PUNCHED ± 1/32	PRODUCTION	9/9/2022	
NEXT ASSY	USED ON	BURNED ± 1/32	J. LEE		
APPLICATIONS					

TITLE:	SUPPORT PIPE, 2.375" O.D.	
SIZE	DRAWING NO.	REV
B	P-006-303	1
SCALE: 1:6	WEIGHT: 29.25 lbs.	SHEET 1 OF 1

THE INFORMATION CONTAINED IN THIS DRAWING IS THE SOLE PROPERTY OF ELECTRO MECHANICAL INDUSTRIES, INC. ANY REPRODUCTION IN PART OR WHOLE WITHOUT THE WRITTEN PERMISSION OF ELECTRO MECHANICAL IND., IS PROHIBITED.

REVISIONS					
REV.	DCN #	DESCRIPTION	DATE	BY	APPROVED
1	01219	φ3/8" HOLE FOR HANGING ADDED.	02/27/2023	JTR	JPB



NOTES:  
1. GALVANIZE PER ASTM A123

ITEM NO.	QTY REQD	PART NUMBER	DESCRIPTION	LENGTH	WEIGHT
1	1	PP1-0232-S40M	PIPE, 2.50 INCH, SCH. 40, ASTM A500 GR. B STL., PP1-0232-S40M	150"	72.47

SURFACE FINISH <input checked="" type="checkbox"/> UNLESS OTHERWISE SPECIFIED		UNLESS OTHERWISE SPECIFIED DIMENSIONS ARE IN INCHES		APPROVALS		DATE	
MATERIAL ASTM A500 GR B STL		TOLERANCES ±.06 ±.015 ±.005		DRAWN C. SANCHEZ		8/30/2022	
THIRD ANGLE PROJECTION		FRACTIONS ± 1/16		CHECKER J. Breen		9/9/2022	
NEXT ASSY		USED ON		ENGINEER J. Breen		9/9/2022	
APPLICATIONS		HOLES: DRILLED OR PUNCHED ± 1/32 BURNED ± 1/32		PRODUCTION J. LEE		9/9/2022	

TITLE: <b>SUPPORT PIPE, 2.875" O.D.</b>		ELECTRO MECHANICAL INDUSTRIES, INC. 11230 NEESESHAW DRIVE HOUSTON, TEXAS 77065 1-800-453-0050	
SIZE <b>B</b>	DRAWING NO. P-006-304	REV 1	
SCALE: 1:6	WEIGHT: 72.47 lbs.	SHEET 1 OF 1	