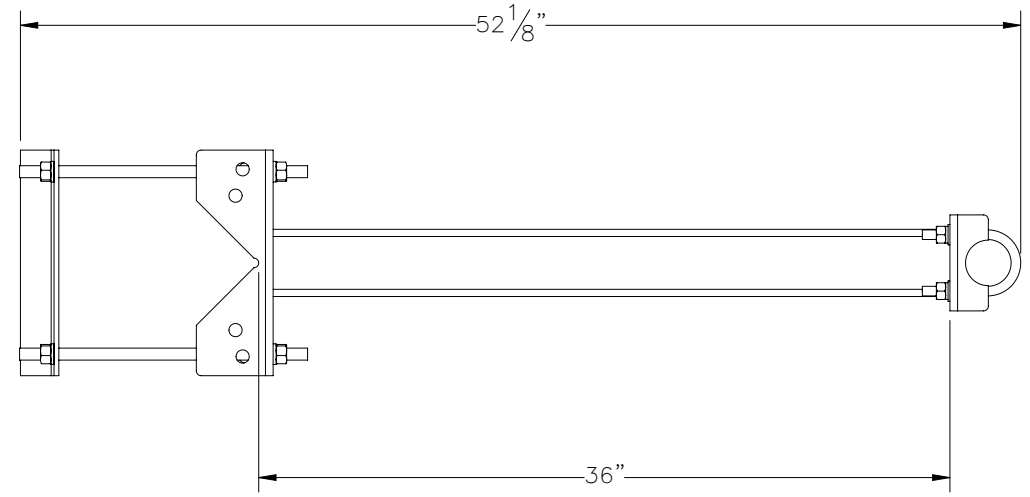
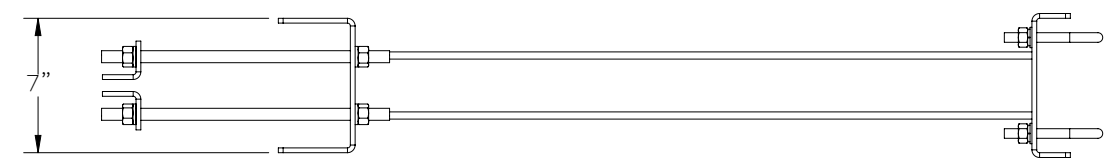
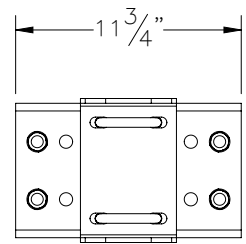
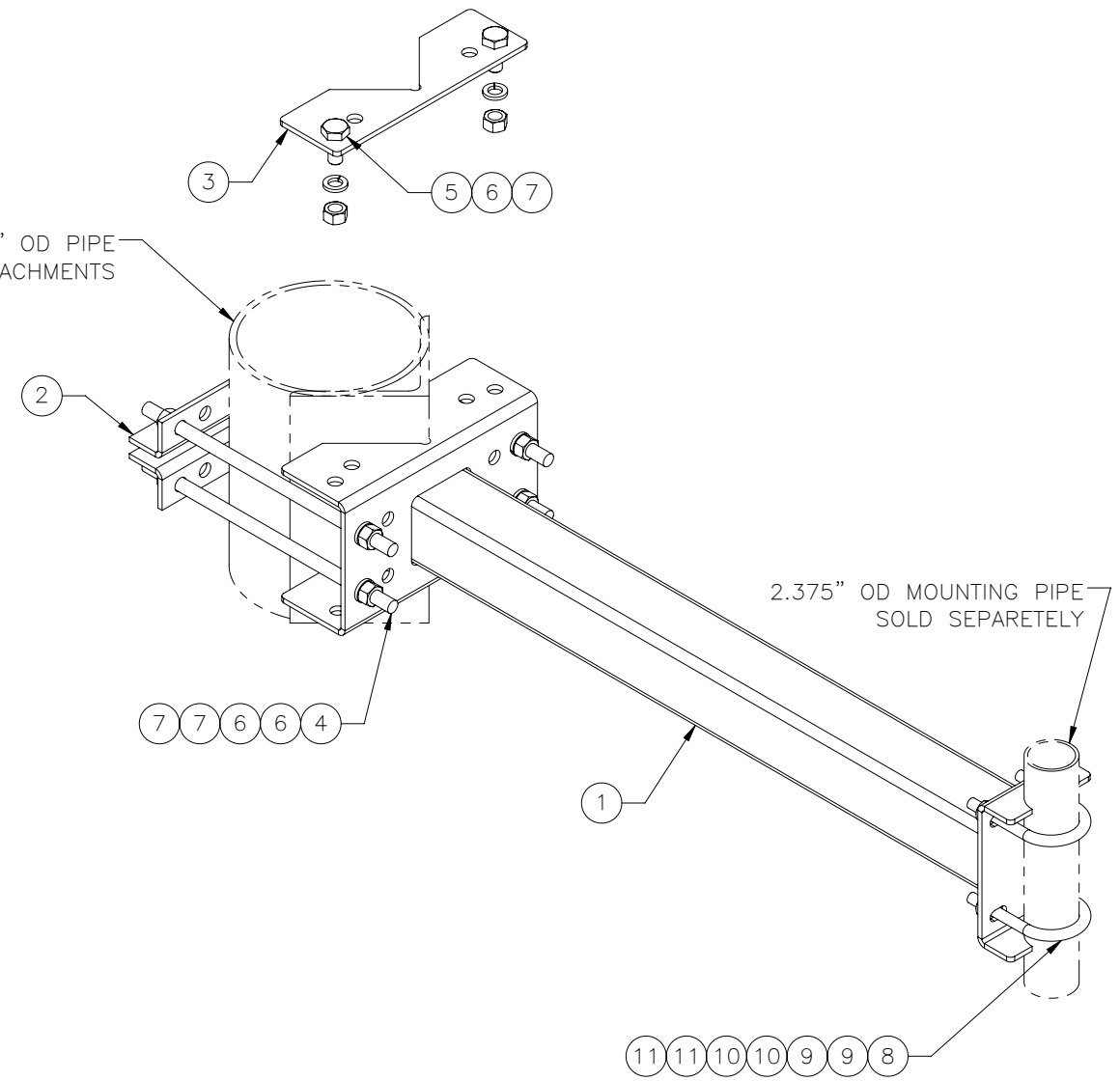


THE INFORMATION CONTAINED IN THIS DRAWING IS THE SOLE PROPERTY OF ELECTRO MECHANICAL INDUSTRIES, INC. ANY REPRODUCTION IN PART OR WHOLE WITHOUT THE WRITTEN PERMISSION OF ELECTRO MECHANICAL IND., IS PROHIBITED.



FOR 1.9" TO 8.625" OD PIPE  
2.5" TO 6" ANGLE ATTACHMENTS



ITEM NO.	QTY REQD	PART NUMBER	DESCRIPTION	LENGTH	WEIGHT
1	1	W-002-668	UNIVERSAL SIDE ARM WELDMENT		36.50
2	2	P-005-985	FORMED ANGLE		2.92
3	1	P-005-988	ADJUSTMENT PLATE		2.35
4	4	002-0AT-H038	AT, .625-11 X 15.0, GALV, GR B7	15"	1.31
5	2	002-0BG-0274	BOLT, HH, .625-11 X 1.50, GALV, A325, FT	1 1/2"	0.2379
6	10	002-0LW-G004	WASHER, SPLIT LOCK, .625, GALV		0.03
7	10	002-0NG-0004	NUT, HEX, .625-11, GALV, GR 2H		0.070
8	2	002-00U-G045	U-BOLT, .500-13 X 2.438 ID X 4.625 H X 2.50 TL, GALV	4 5/8"	0.638
9	4	002-0FW-G037	WASHER, FLAT, .500, GALV, SAE		0.02
10	4	002-0LW-G002	WASHER, SPLIT LOCK, .500, GALV		0.014
11	4	002-0NG-0010	NUT, HEX, .500-13, GALV, GR 2H		0.06

NOTES :

- ADJUSTMENT PLATE USED FOR SLOPPED LEGS.  
OUTTER HOLES FOR 9:1, INNER HOLES FOR 12:1,  
AND OUTTER HOLES WITH WELDMENT FLIPPED 180 DEG FOR 16:1

SURFACE FINISH <input checked="" type="checkbox"/> UNLESS OTHERWISE SPECIFIED		UNLESS OTHERWISE SPECIFIED DIMENSIONS ARE IN INCHES		APPROVALS		DATE		ELECTRO MECHANICAL INDUSTRIES, INC. 11250 NEESESHAW DRIVE HOUSTON, TEXAS 77065 1-800-453-0050	
MATERIAL SEE PARTS LIST		TOLERANCES .0 ±.06 .00 ±.015 .000 ±.005		DRAWN J. ROACH		7/14/2023		TITLE: <b>UNIVERSAL SIDE ARM MOUNT</b>	
THIRD ANGLE PROJECTION		FRACTIONS ± 1/16 ANGLES ± .25°		CHECKER					
NEXT ASSY		DRILLED OR PUNCHED +1/32		ENGINEER				SIZE <b>B</b>	
APPLICATIONS		BURNED ±1/32		PRODUCTION				DRAWING NO. 1012-0000-0100	
								REV 0	
						SCALE: 1:10		WEIGHT: 53.01 lbs.	
								SHEET 1 OF 1	