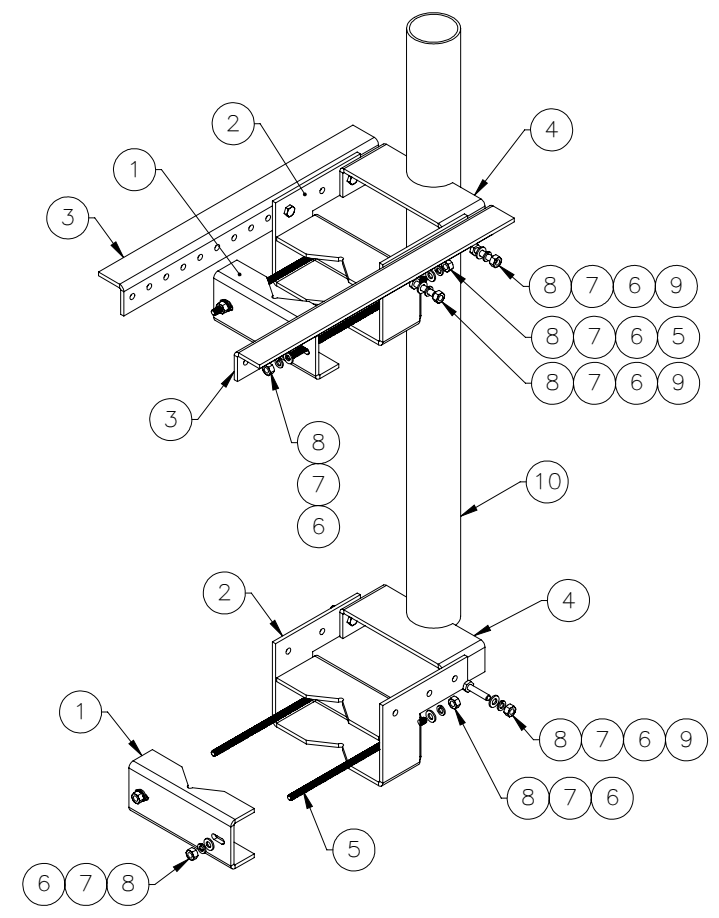
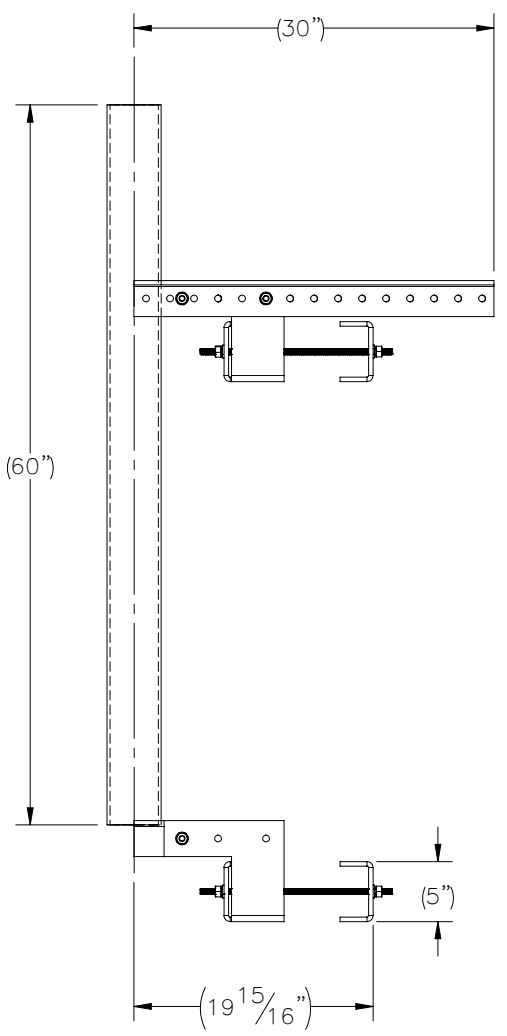
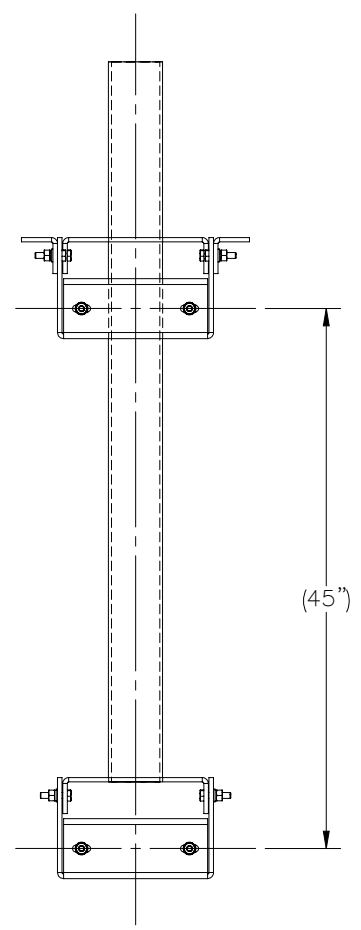
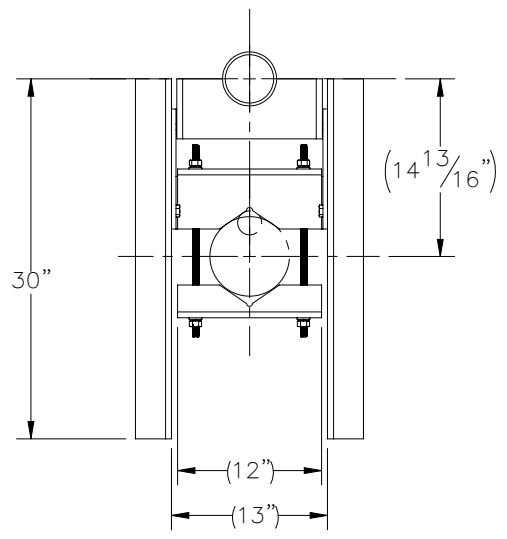

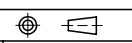


THE INFORMATION CONTAINED IN THIS DRAWING IS THE SOLE PROPERTY OF ELECTRO MECHANICAL INDUSTRIES, INC. ANY REPRODUCTION IN PART OR WHOLE WITHOUT THE WRITTEN PERMISSION OF ELECTRO MECHANICAL IND., IS PROHIBITED.



ITEM NO.	QTY REQD	PART NUMBER	DESCRIPTION	LENGTH	WEIGHT
1	2	P-005-821	CLAMP BRACKET 001	12"	11.02
2	2	P-005-822	CLAMP BRACKET 002	12"	28.02
3	2	P-005-823	CLAMP BRACKET 003	30"	17.12
4	2	P-005-824	CLAMP BRACKET 004	12 1/8"	8.20
5	4	002-0AT-HA07	ROD, THREADED 1/2"-13 X 16" LG, GR B7., GALV.	16.00	0.73
6	14	002-0FW-G002	FW, .50, F436, HDG		0.02
7	14	002-0LW-G002	WASHER, SPLIT LOCK, .500", GALV		0.01
8	14	002-0NG-0010	NUT, HEX, .500-13UNC, GR 2H, GALV		0.06
9	6	002-0BG-0042	HHB, .500-13 X 2.25 LG., PT X 1.00, A325, HDG	2.25	0.2
10	1	PP1-0400-S40M	PIPE, 4.00 INCH, SCH. 40, ASTM A500 GR. B STL. 50 KSI MIN YIELD, PP1-0400-S40M	60"	54.00

SURFACE FINISH <input checked="" type="checkbox"/> UNLESS OTHERWISE SPECIFIED		UNLESS OTHERWISE SPECIFIED DIMENSIONS ARE IN INCHES		APPROVALS		DATE		 ELECTRO MECHANICAL INDUSTRIES, INC. 11230 NEESEAW DRIVE HOUSTON, TEXAS 77065 1-800-453-0050	
MATERIAL SEE PARTS LIST		TOLERANCES		DRAWN P. GUTIERREZ		6/5/2023			
THIRD ANGLE PROJECTION 		FRACTIONS ± 1/16		CHECKER				ENGINEER	
NEXT ASSY		USED ON		PRODUCTION				SIZE B	
APPLICATIONS		DRILLED OR PUNCHED ± 1/32						DRAWING NO. 1012-0000-0081	
		BURNED ± 1/32						SCALE: 1:16	
								WEIGHT: 188.13 lbs.	
								SHEET 1 OF 1	