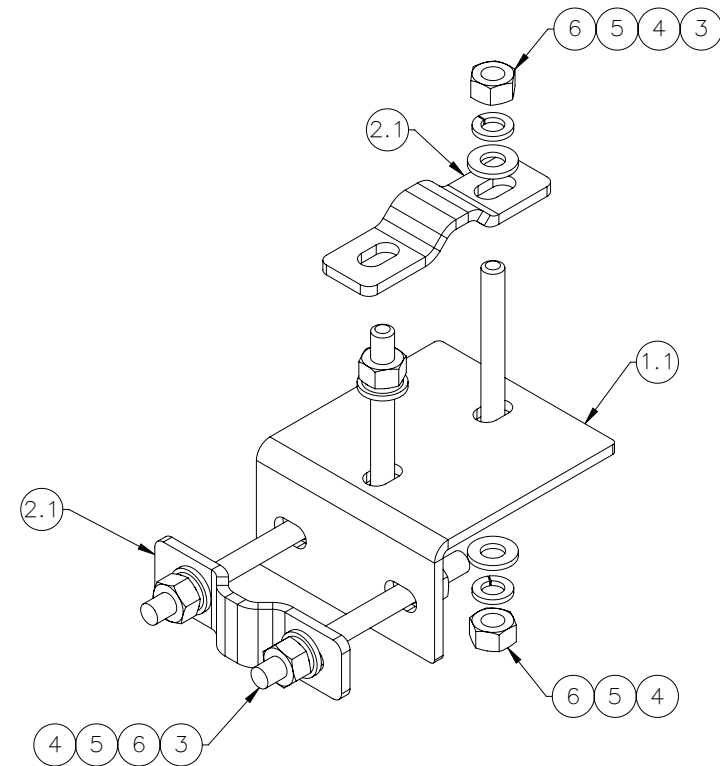
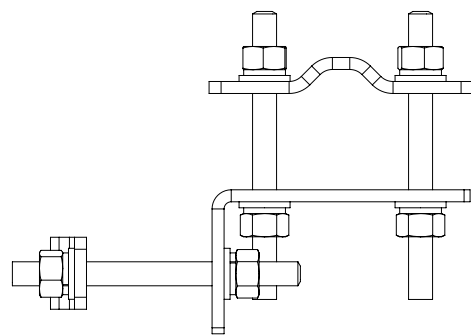
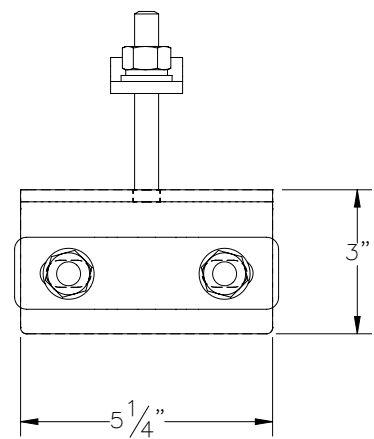
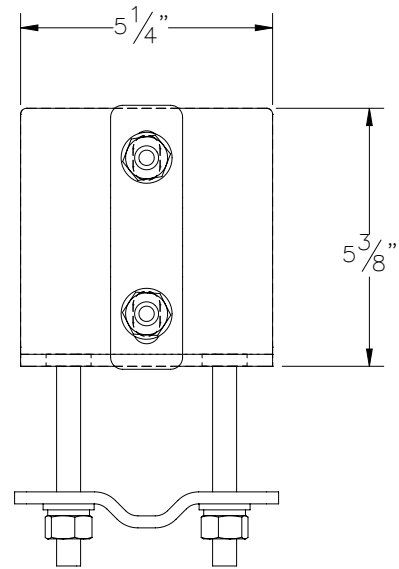

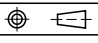


THE INFORMATION CONTAINED IN THIS DRAWING IS THE SOLE PROPERTY OF ELECTRO MECHANICAL INDUSTRIES, INC. ANY REPRODUCTION IN PART OR WHOLE WITHOUT THE WRITTEN PERMISSION OF ELECTRO MECHANICAL IND., IS PROHIBITED.



ITEM NO.	QTY REQD	PART NUMBER	DESCRIPTION	LENGTH	WEIGHT
1	1	P-005-069	PIPE STANDOFF BRACKET		2.85
1.1	1	PL1-016E	PLATE 1/4" X 5 1/4" X 7 7/8" ASTM A572 GR 50 STL	7 7/8"	2.85
2	2	PL1-016A	PIPE CLAMP, 2.375 - 2.875 O.D.		0.55
2.1	1	PL1-016A	PLATE, 1/4" X 1 1/2" X 5 15/16", ASTM A36 STL	6	
3	4	002-0AT-HA04	ROD, THREADED, .500-13UNC X 5.00 LG, ASTM A193 B7, GALV.		0.334
4	8	002-0FW-G002	FW, .50, F436, HDG		0.02
5	8	002-0LW-G002	WASHER, SPLIT LOCK, .500", GALV		0.01
6	8	002-0NG-0010	NUT, HEX, .500-13UNC, GR 2H, GALV		0.06

SURFACE FINISH <input checked="" type="checkbox"/> UNLESS OTHERWISE SPECIFIED		UNLESS OTHERWISE SPECIFIED DIMENSIONS ARE IN INCHES		APPROVALS	DATE	 ELECTRO MECHANICAL INDUSTRIES, INC. 11230 NEESESHAW DRIVE HOUSTON, TEXAS 77065 1-800-453-0050
MATERIAL	SEE PARTS LIST	TOLERANCES		DRAWN	5/31/2023	
THIRD ANGLE PROJECTION		.0	± .06	CHECKER		Pipe Crossover Angle, 2"-3.5" OD to 2"-3.5" OD
		.00	± .015	ENGINEER		
		.000	± .005	PRODUCTION		DRAWING NO.
NEXT ASSY	USED ON	FRACTIONS	± 1/16			1012-0000-0039
		ANGLES	± .25°			REV
		HOLES:				—
		DRILLED OR PUNCHED	+1/32			SCALE: 1:4
APPLICATIONS		BURNED	±1/32			WEIGHT: 6.09 lbs.
						SHEET 1 OF 1