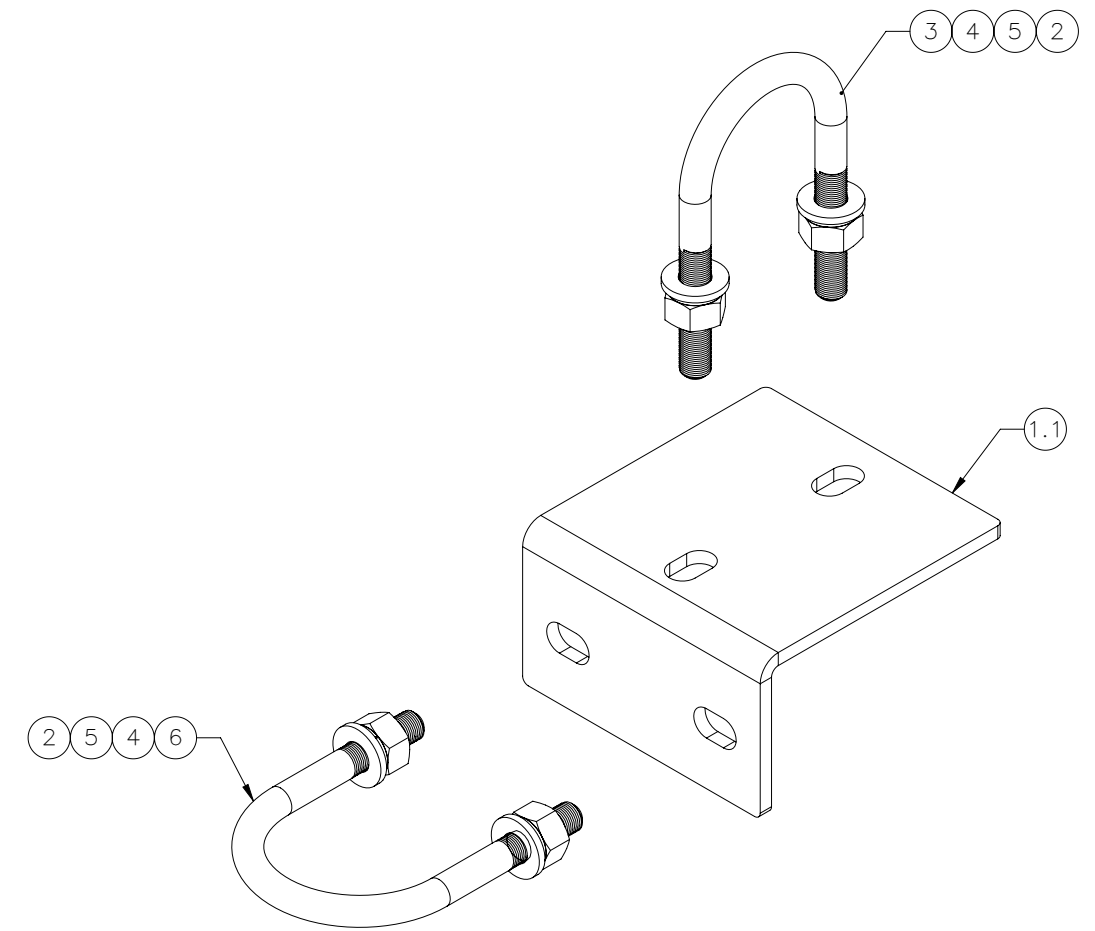
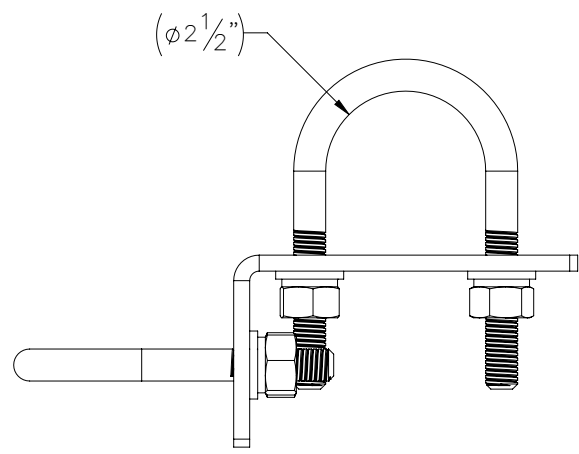
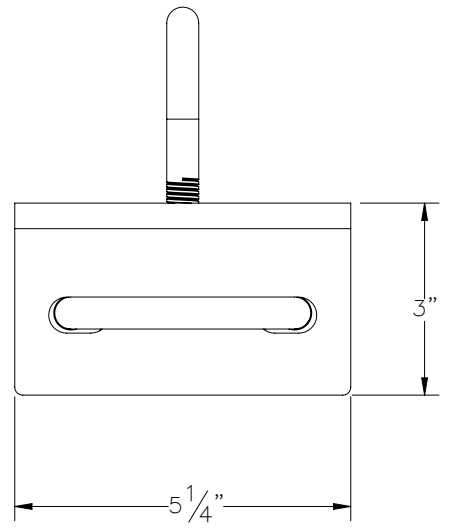
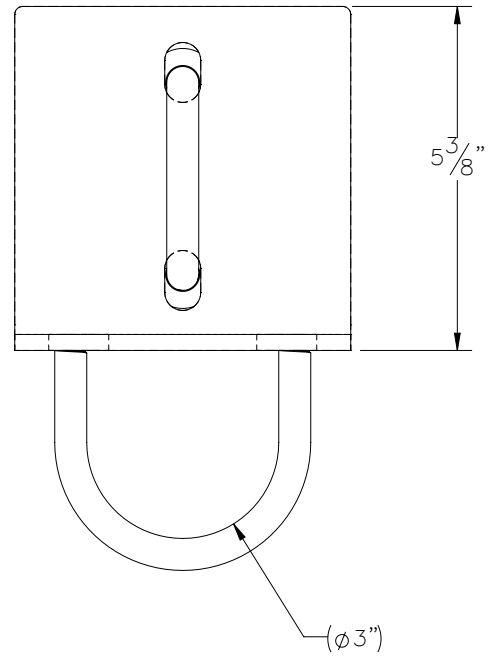


THE INFORMATION CONTAINED IN THIS DRAWING IS THE SOLE PROPERTY OF ELECTRO MECHANICAL INDUSTRIES, INC. ANY REPRODUCTION IN PART OR WHOLE WITHOUT THE WRITTEN PERMISSION OF ELECTRO MECHANICAL IND., IS PROHIBITED.



ITEM NO.	QTY REQD	PART NUMBER	DESCRIPTION	LENGTH	WEIGHT
1	1	P-005-069	PIPE STANDOFF BRACKET		2.85
1.1	1	PL1-016E	PLATE 1/4" X 5 1/4" X 7 7/8" ASTM A572 GR 50 STL	7 7/8"	2.85
2	4	002-0NG-0010	NUT, HEX, .500-13UNC, GR 2H, GALV		0.06
3	1	002-00U-G045	U-BOLT, .500-13 X 2.44 I.D. X 4.63 HT, 2.5 THD, GALV		0.62
4	4	002-0FW-G002	FW, .50, F436, HDG		0.02
5	4	002-0LW-G002	WASHER, SPLIT LOCK, .500", GALV		0.01
6	1	002-00U-G044	U-BOLT, .500-13 X 3.0 I.D. X 4.5 HT, 1.63 THD, GALV.		0.63

SURFACE FINISH <input checked="" type="checkbox"/> UNLESS OTHERWISE SPECIFIED		UNLESS OTHERWISE SPECIFIED DIMENSIONS ARE IN INCHES		APPROVALS	DATE	ELECTRO MECHANICAL INDUSTRIES, INC. 11230 NEESHAW DRIVE HOUSTON, TEXAS 77065 1-800-453-0050
MATERIAL	SEE PARTS LIST	TOLERANCES		DRAWN	5/31/2023	
THIRD ANGLE PROJECTION		.0 ±.06 .00 ±.015 .000 ±.005		CHECKER		TITLE:
		FRACTIONS ± 1/16 ANGLES ± .25°		ENGINEER		PIPE CROSSOVER ANGLE, 2.375 OD X 2.875 OD - L3-XA-2030
NEXT ASSY	USED ON	HOLES: DRILLED OR PUNCHED		PRODUCTION		SIZE
		±1/32 BURNED ±1/32				DRAWING NO.
APPLICATIONS						1012-0000-0038
						REV
						—
						SCALE: 1:3
						WEIGHT: 4.50 lbs.
						SHEET 1 OF 1