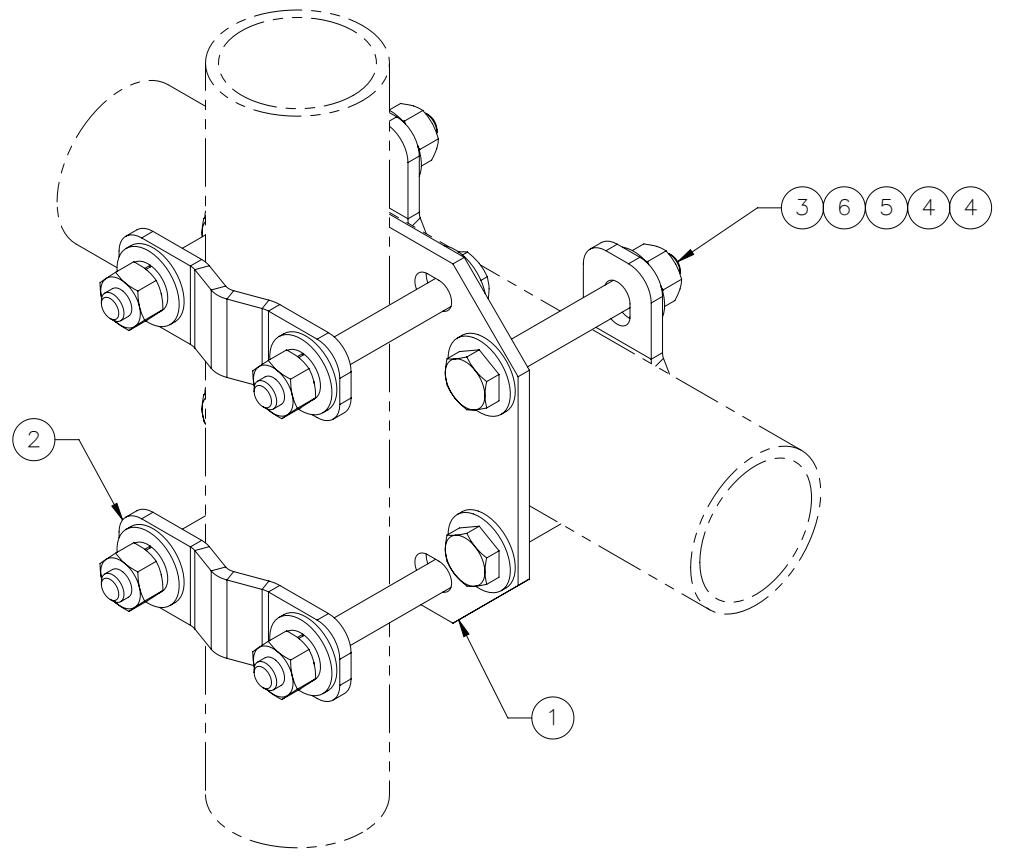
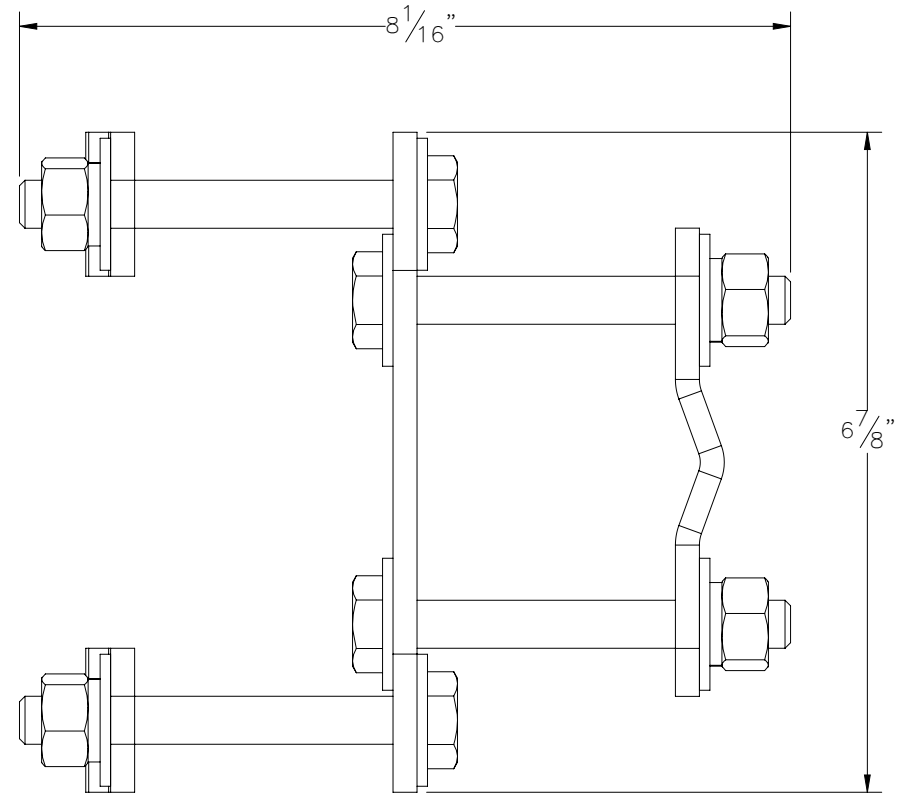
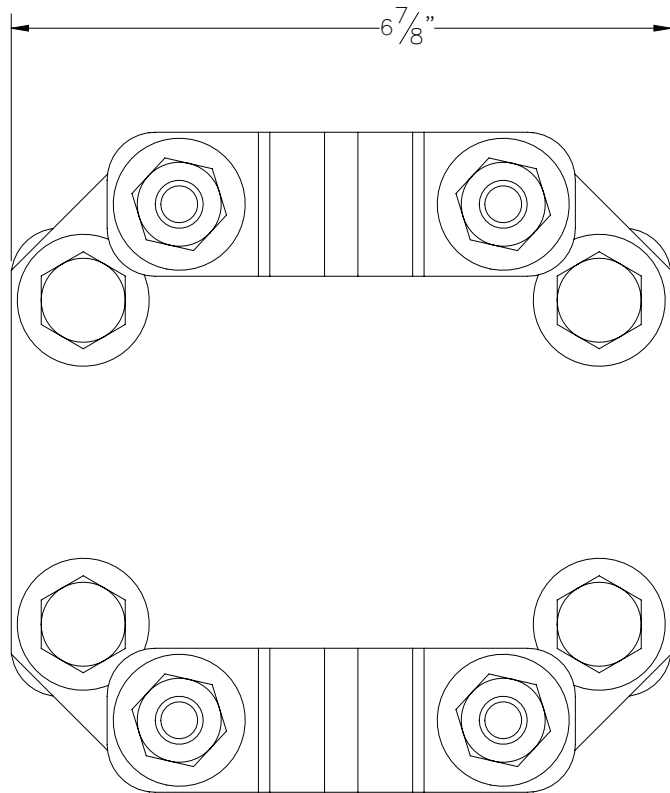




THE INFORMATION CONTAINED IN THIS DRAWING IS THE SOLE PROPERTY OF ELECTRO MECHANICAL INDUSTRIES, INC. ANY REPRODUCTION IN PART OR WHOLE WITHOUT THE WRITTEN PERMISSION OF ELECTRO MECHANICAL IND., IS PROHIBITED.



ITEM NO.	QTY REQD	PART NUMBER	DESCRIPTION	LENGTH	WEIGHT
1	1	P-005-906	CROSSOVER PLATE, 2.375" OR 2.875" PIPE TO 2.375" OR 2.875" PIPE, 1/2" HDW	6 7/8"	2.84
2	4	P-005-905	V-CLAMP, 3.625" SPC		0.46
3	8	002-0BG-0317	BOLT, HH, .500-13 X 4.25, GALV, A325, PT X 1.00	4 1/4"	0.2953
4	16	002-0FW-G020	WASHER, FLAT, .500, GALV, USS		0.04
5	8	002-0LW-G002	WASHER, SPLIT LOCK, .500, GALV		0.014
6	8	002-0NG-0010	NUT, HEX, .500-13, GALV, GR 2H		0.06

SURFACE FINISH <input checked="" type="checkbox"/> UNLESS OTHERWISE SPECIFIED		UNLESS OTHERWISE SPECIFIED DIMENSIONS ARE IN INCHES		APPROVALS	DATE	 ELECTRO MECHANICAL INDUSTRIES, INC. 11230 NEESESHAW DRIVE HOUSTON, TEXAS 77065 1-800-453-0050
MATERIAL	SEE PARTS LIST	TOLERANCES		DRAWN	6/22/2023	
THIRD ANGLE PROJECTION		.0	± .06	CHECKER	6/22/2023	
		.00	± .015	ENGINEER	6/22/2023	
		.000	± .005	PRODUCTION	6/22/2023	TITLE: <b>CROSSOVER PLATE KIT,          2.5" PIPE TO 2.5" PIPE,          3/8" HDW</b>
NEXT ASSY	USED ON	FRACTIONS	± 1/6			
APPLICATIONS		ANGLES	± .25°			SIZE <b>B</b> DRAWING NO. 1012-0000-0010 REV 0
		HOLES:				SCALE: 1:2 WEIGHT: 8.26 lbs. SHEET 1 OF 1
		DRILLED OR PUNCHED	+1/32			
		BURNED	±1/32			