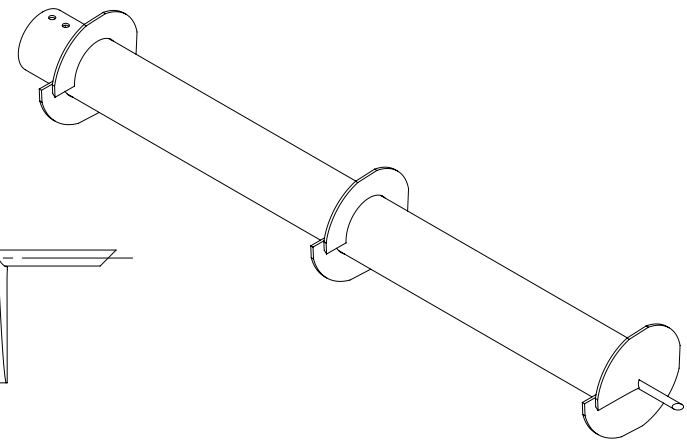
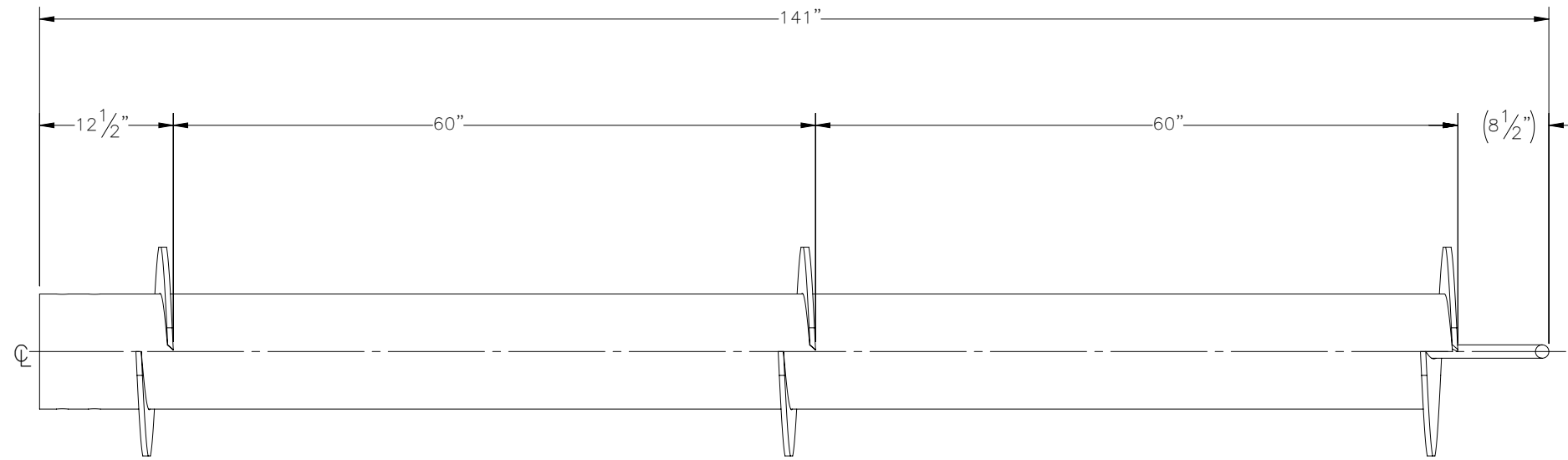
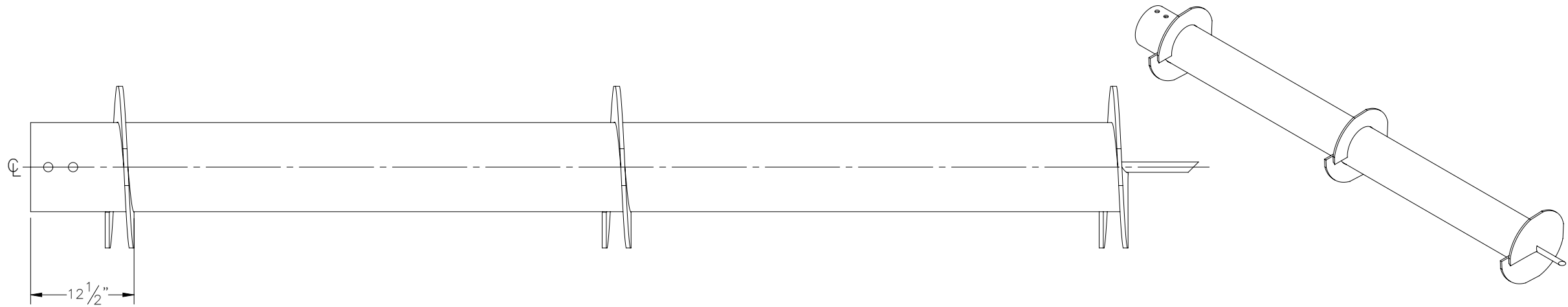
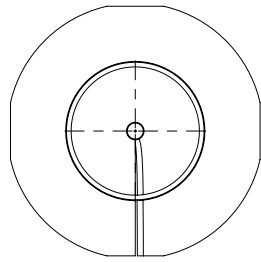

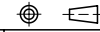


THE INFORMATION CONTAINED IN THIS DRAWING IS THE SOLE PROPERTY OF ELECTRO MECHANICAL INDUSTRIES, INC. ANY REPRODUCTION IN PART OR WHOLE WITHOUT THE WRITTEN PERMISSION OF ELECTRO MECHANICAL IND., IS PROHIBITED.



SURFACE FINISH <input checked="" type="checkbox"/> UNLESS OTHERWISE SPECIFIED		UNLESS OTHERWISE SPECIFIED DIMENSIONS ARE IN INCHES		APPROVALS		DATE		 ELECTRO MECHANICAL INDUSTRIES, INC. 11230 NEESEHAW DRIVE HOUSTON, TEXAS 77065 1-800-453-0050	
MATERIAL SEE PARTS LIST		TOLERANCES		DRAWN H. MAUERMANN		1/16/2024		TITLE: 10" X 11' HELICAL LEAD, TRIPLE 20" FLIGHTS	
THIRD ANGLE PROJECTION 		.0 ± .06 .00 ± .015 .000 ± .005		CHECKER J. Breen		1/16/2024		SIZE B	
		FRACTIONS ± 1/16		ENGINEER J. Breen		1/16/2024		DRAWING NO. 1008-0050-0053	
		ANGLES ± .25°		PRODUCTION J. KERNER		1/16/2024		REV 0	
NEXT ASSY		HOLES: DRILLED OR PUNCHED ± 1/32						SCALE: 1:24	
APPLICATIONS		BURNED ± 1/32						WEIGHT: 548.86 lbs.	
								SHEET 1 OF 1	