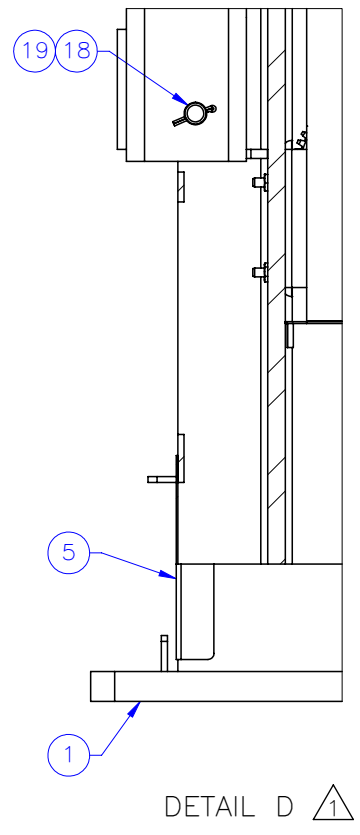
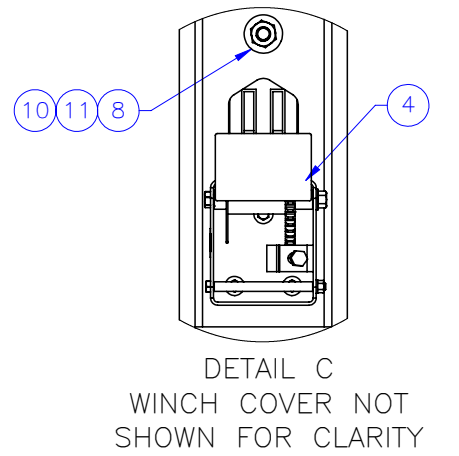
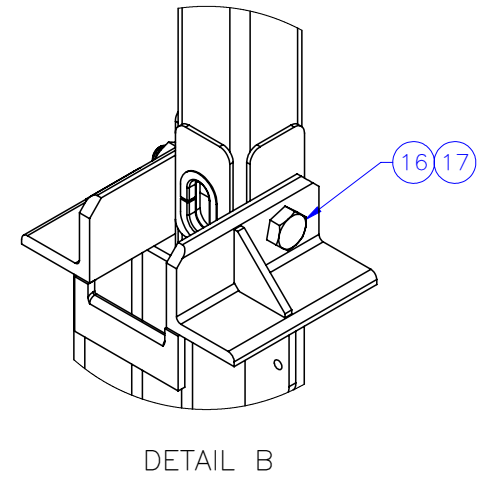
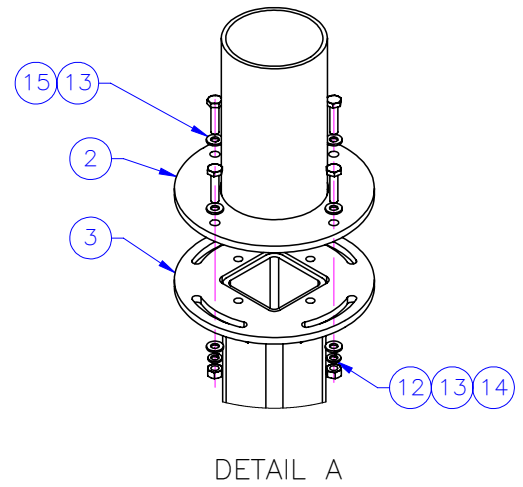
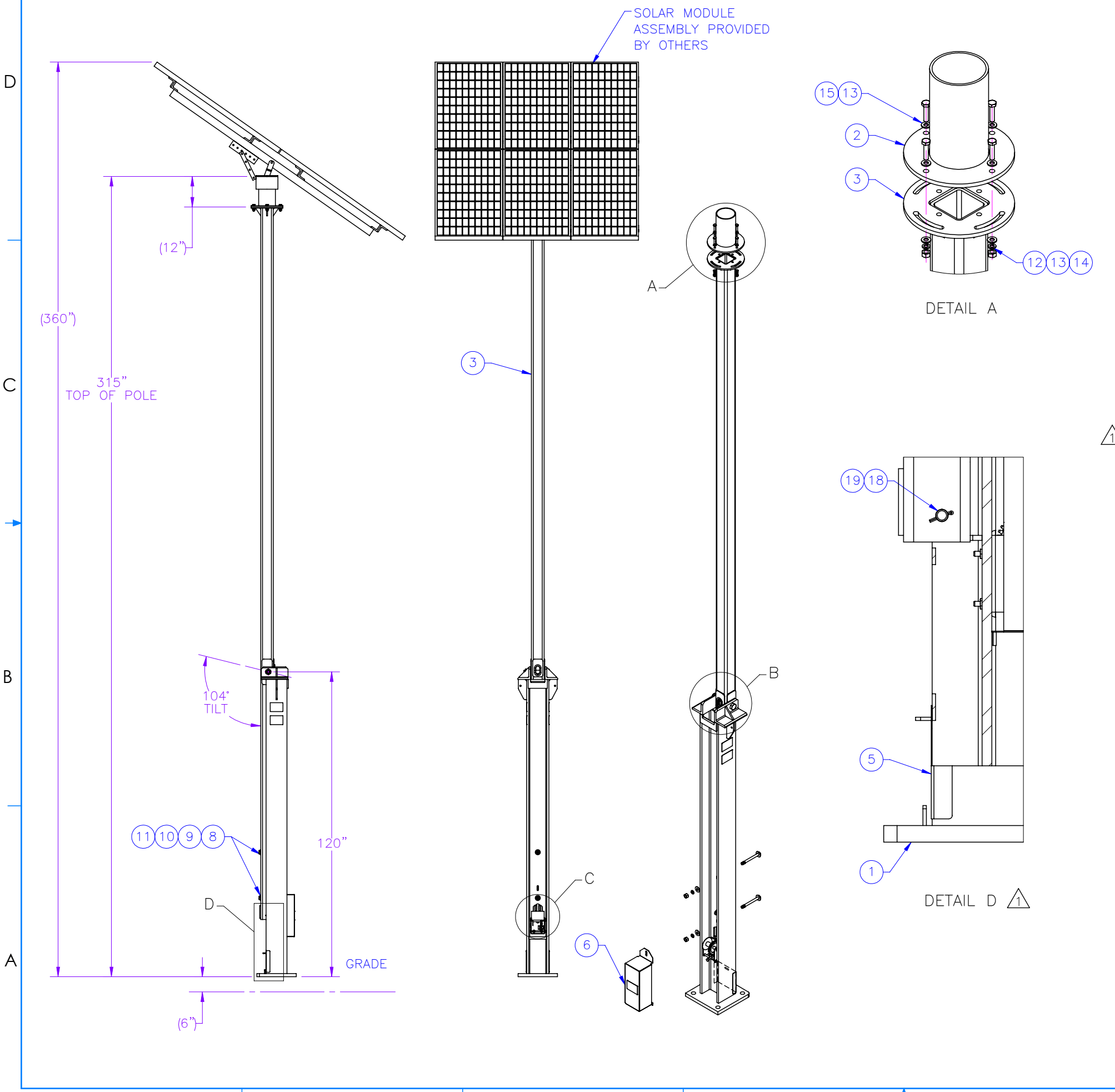


THE INFORMATION CONTAINED IN THIS DRAWING IS THE SOLE PROPERTY OF ELECTRO MECHANICAL INDUSTRIES, INC. ANY REPRODUCTION IN PART OR WHOLE WITHOUT THE WRITTEN PERMISSION OF ELECTRO MECHANICAL IND., IS PROHIBITED.

REVISIONS					
REV.	DCN #	DESCRIPTION	DATE	BY	APPROVED
1	DCN00999	REMOVED 1/4-20 HARDWARE FROM BOM AND DETAIL D	01.15.2021	MCG	FJM



ITEM NO.	QTY REQD	PART NUMBER	DESCRIPTION	LENGTH	WEIGHT
1	1	W-002-081	SUPPORT BASE WELDMENT, SOLAR TILT-UP TOWER		700.2
2	1	W-002-098	12" X 6" SCH40 PIPE SOLAR MNT WELD		30.56
3	1	W-002-099	MAST WELDMENT, SOLAR TILT-UP TOWER		540.82
4	1	1002-0050-0003	WINCH KIT (1/4" X 14' WIRE ROPE)		8.7
5	1	400-004-1850-0129	FRONT COVER		1.98
6	1	400-004-3050-0612	WINCH COVER		8.74
7	1	(MCM) 24175K18	EDGE GUARD, 1/2", CUT AT 10" LG.		0.039
8	4	002-0FW-G000	WASHER, FLAT, .75 INCH, USS, GALV		0.09
9	2	002-0LW-G003	WASHER, SPLIT LOCK, .75", GALV		0.04
10	2	002-0NG-0019	NUT, HX, .75-10UNC, GR DH, GALV		0.19
11	2	002-0BG-0007	BOLT, HX HD, .75-10UNC X 8.00 LG, A325, GALV		1.16
12	4	002-0LW-G002	WASHER, SPLIT LOCK, .500", GALV		0.01
13	8	002-0FW-G002	WASHER, FLAT, .500", F436, GALV		0.02
14	4	002-0NG-0010	NUT, HEX, .500-13UNC, GR 2H, GALV		0.06
15	4	002-0BG-0042	BOLT, HEX HD, .500-13UNC X 2.25 LG, ASTM A325, GALV		0.2
16	1	002-0BG-0032	BOLT, HX HD, 1.25-7UNC X 9.00 LG, A325, GALV		3.81
17	1	002-0NG-0020	NUT, HX, ANCO LOCKNUT, 1.25-7UNC, GR 2H, GALV		0.79
18	1	400-004-3054-0071	.875" DIA. X 5.75" LG. PIN		0.956
19	2	002-00C-0002	COTTER PIN, .188 DIA. X 1.50 LG, GALV		0.007
20	2	999-999-L001	3.5" x 5" DO NOT CLIMB DECAL		0.01
21	2	999-999-L002	3.5" x 5" PINCH POINT DECAL		0.01
22	1	999-999-L003	3.5" x 5" WINCH RATING DECAL		0.01

SURFACE FINISH <input checked="" type="checkbox"/> UNLESS OTHERWISE SPECIFIED		UNLESS OTHERWISE SPECIFIED DIMENSIONS ARE IN INCHES		APPROVALS		DATE	
MATERIAL SEE PARTS LIST		TOLERANCES		DRAWN MGlenthin		11.20.2020	
THIRD ANGLE PROJECTION		FRACTIONS ± 1/16		CHECKED F. MERCHAN		11.23.2020	
NEXT ASSY USED ON		ANGLES ± .25°		ENGINEER/DESIGNER F. MERCHAN		11.27.2020	
APPLICATIONS		HOLES: DRILLED OR PUNCHED ± 1/32		PRODUCTION J.K.S.		11.30.2020	
		BURNED ± 1/32					

ELECTRO MECHANICAL INDUSTRIES, INC.  
11230 NEESEAW DRIVE  
HOUSTON, TEXAS 77065  
1-800-453-0050

TITLE: **30' TILT UP TOWER WITH BOLT ON SOLAR ASSEMBLY**

SIZE **B** DRAWING NO. **1002-0030-0047** REV **1**

SCALE: 1:42 WEIGHT: 1301.1 lbs. SHEET 1 OF 2