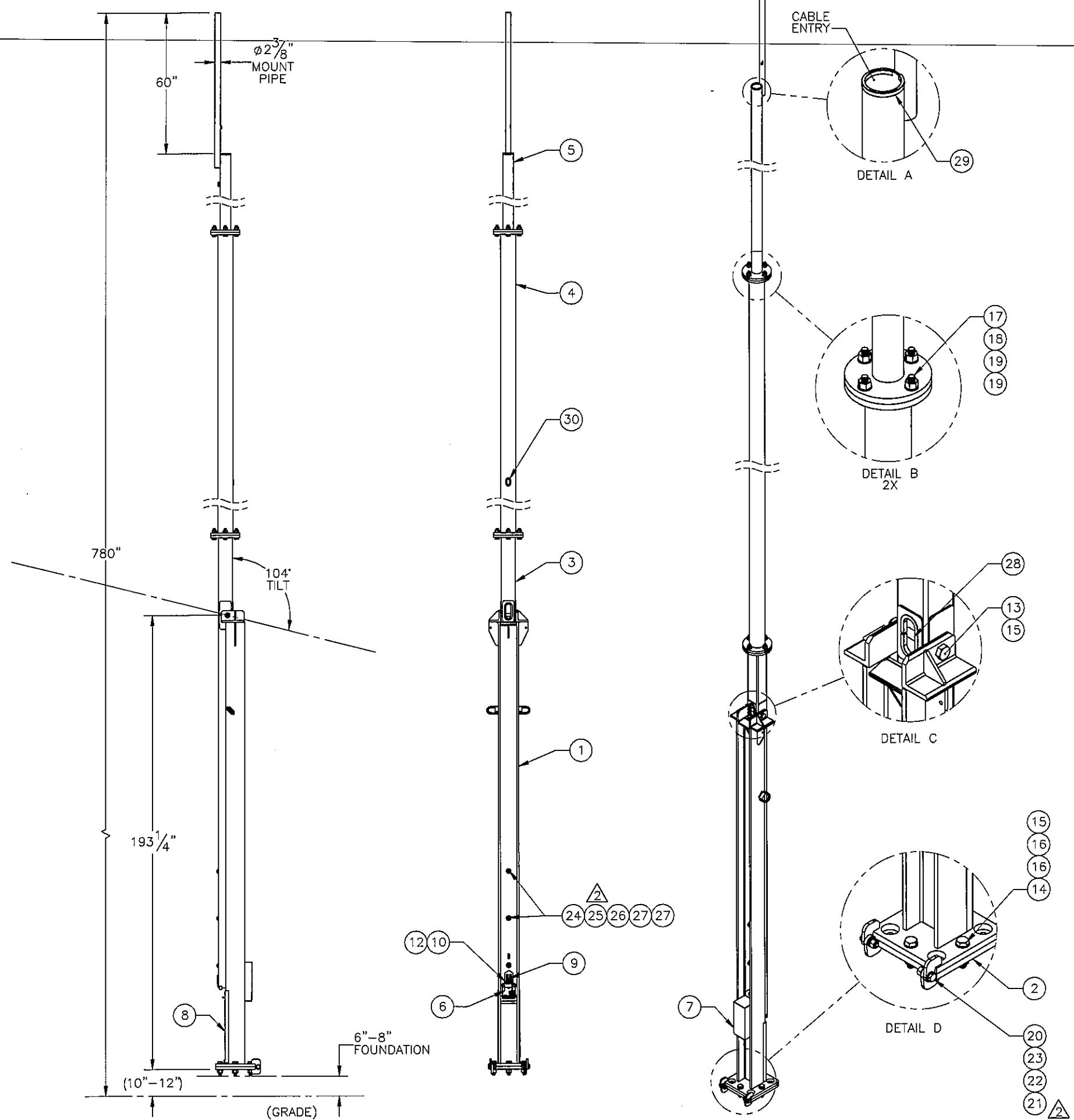


THE INFORMATION CONTAINED IN THIS DRAWING IS THE SOLE PROPERTY OF ELECTRO MECHANICAL INDUSTRIES, INC. ANY REPRODUCTION IN PART OR WHOLE WITHOUT THE WRITTEN PERMISSION OF ELECTRO MECHANICAL IND., IS PROHIBITED.

REVISIONS					
REV.	DCN #	DESCRIPTION	DATE	BY	APPROVED
2	DCN00869	UPDATED HARDWARE AND ADDED SAFETY DECALS	2020.06.25	BLH	JPB

PATENT# 8,910,432



ITEM NO.	QTY.	PART NUMBER	DESCRIPTION	LENGTH	WEIGHT
1	1	400-004-5010-0100	SUPPORT BASE ASSEMBLY		1075.5
2	1	400-004-5000-0130	LOWER BASE PLATE ASSEMBLY		100.1
3	1	400-004-5000-0210	LOWER SQUARE MAST ASSEMBLY		341.2
4	1	400-004-5000-0310	MIDDLE ROUND MAST ASSEMBLY		428.1
5	1	W-001-542	UPPER ROUND MAST WELDMENT		266.0
6	1	1002-0050-0007	WINCH KIT (1/4" X 47' WIRE ROPE)		8.7
7	1	400-004-3050-0612	WINCH COVER		8.740
8	1	400-004-5010-0135	FRONT COVER		8.23
9	1	400-004-5000-0080	4" PULLEY ASSEMBLY		2.40
10	1	400-004-5000-0071	.875 DIA. X 6.75 LG. PIN		1.13
11	1	400-004-5000-0072	.875 DIA. X 2.25 LG. PIN		0.36
12	4	002-00C-0002	COTTER PIN, .187 X 1.50 LG, GALV		0.01
13	1	002-0BG-0035	BOLT, 1.25-7UNC X 10.00 LG, ASTM A325, GALV		4.15
14	4	002-0BG-0031	BOLT, HX HD, 1.25-7UNC X 5.00 LG, GR B7, GALV		2.38
15	5	002-0NG-0020	NUT, HX, ANCO LOCKNUT, 1.25-7UNC, GR 2H, GALV		0.79
16	8	002-0FW-G011	WASHER, FLAT, 1.25, ASTM F436, GALV		0.13
17	8	002-0BG-0210	BOLT, HX HD, 1.00-8 X 4.00 LG, ASTM A193 GR B7, GALV		1.21
18	8	002-0NG-0000	NUT, HX, ANCO LOCK, 1.00-8UNC, GR 2H, GALV		0.43
19	16	002-0FW-G009	WASHER, FLAT, 1.00", F436, GALV.		0.08
20	2	002-0BG-0040	BOLT, HX HD, .875-9UNC X 3.00 LG, ASTM A325, GALV		0.75
21	2	002-0NG-0009	NUT, HEX, .875-9UNC, GR 2H, GALV		0.29
22	2	002-0LW-G007	WASHER, SPLIT LOCK, .875, GALV		0.06
23	4	002-0FW-G008	WASHER, FLAT, .875, ASTM F436, GALV		0.09
24	3	002-0BG-0029	BOLT, HX HD, .75-10UNC X 9.00 LG, ASTM A325, GALV		1.29
25	3	002-0NG-0002	NUT, HX, .75-10UNC, GR 2H, GALV		0.19
26	3	002-0LW-G003	WASHER, SPLIT LOCK, .75", GALV		0.04
27	6	002-0FW-G000	WASHER, FLAT, .75 INCH, USS, GALV		0.09
28	1	309-000-0002-15	EDGE GUARD, 1/2", 15" LG,	15"	0.102
29	1	309-000-0001-12	EDGE GUARD, 3/16", 12" LG	12"	0.1
30	1	309-000-0003-11	EDGE GUARD, 1/4", 11" LG.	11"	0.0
31	2	999-999-L001	3.5" x 5" DO NOT CLIMB DECAL		0.006
32	2	999-999-L002	3.5" x 5" PINCH POINT DECAL		0.006
33	1	999-999-L003	3.5" x 5" WINCH RATING DECAL		0.006

SURFACE FINISH <input checked="" type="checkbox"/> UNLESS OTHERWISE SPECIFIED		UNLESS OTHERWISE SPECIFIED DIMENSIONS ARE IN INCHES		APPROVALS		DATE	
MATERIAL SEE PARTS LIST		TOLERANCES ±.005 ±.015 ±.005		DRAWN C.SANCHEZ		8.15.19	
THIRD ANGLE PROJECTION		FRACTIONS ±1/16		CHECKED J.BREEN		8.20.19	
NEXT ASSY		ANGLES ±.25°		ENGINEER/DESIGNER J.BREEN		8.20.19	
USED ON		HOLES: DRILLED OR PUNCHED ±1/32		PRODUCTION JKS		8.20.19	
APPLICATIONS		BURNED ±1/32					

ELECTRO MECHANICAL INDUSTRIES, INC.
11230 NEESEHAW DRIVE
HOUSTON, TEXAS 77065
1-800-453-0050

TITLE: **65' TILT UP TOWER**

SIZE **B** DRAWING NO. **1002-0030-0039** REV **2**

SCALE: 1:48 WEIGHT: 2281.5 lbs. SHEET 1 OF 1