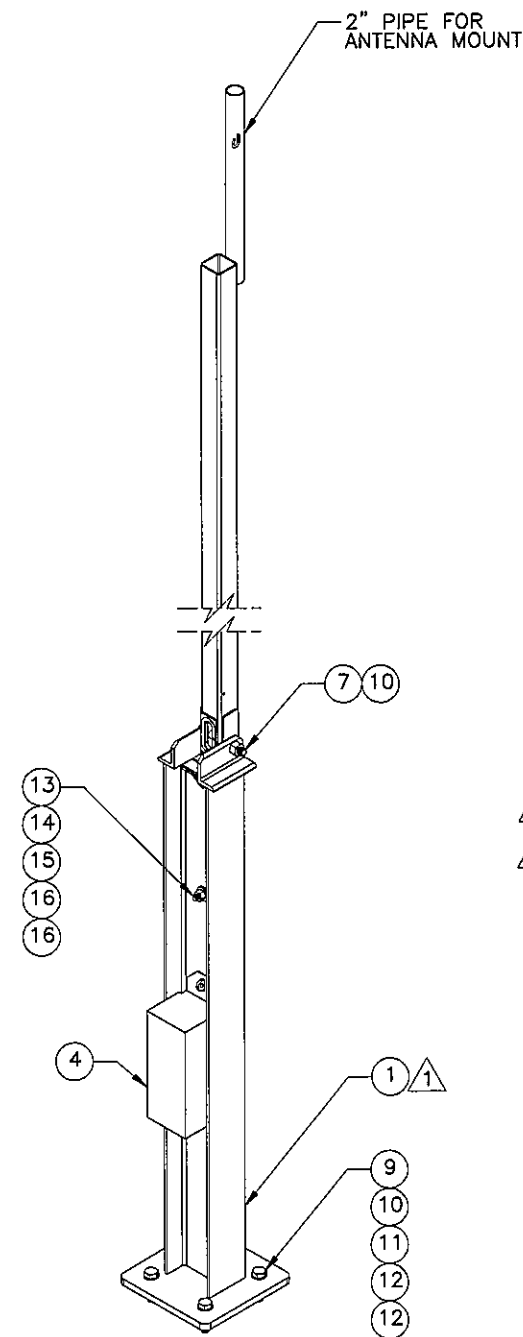
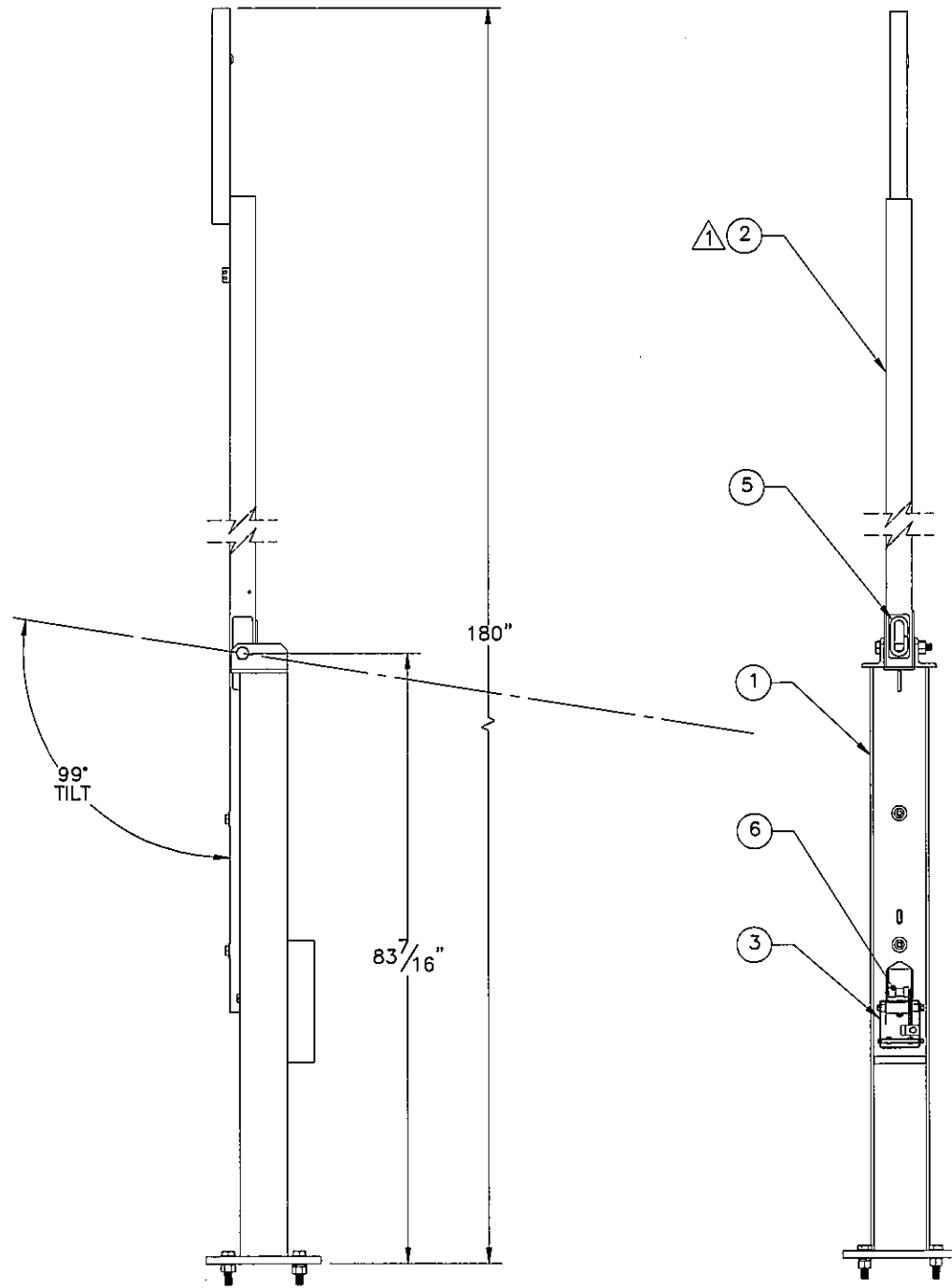


THE INFORMATION CONTAINED IN THIS DRAWING IS THE SOLE PROPERTY OF ELECTRO MECHANICAL INDUSTRIES, INC. ANY REPRODUCTION IN PART OR WHOLE WITHOUT THE WRITTEN PERMISSION OF ELECTRO MECHANICAL IND., IS PROHIBITED.

PATENT: #8,910,432


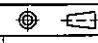
REVISIONS					
REV.	DCN #	DESCRIPTION	DATE	BY	APPROVED
1	DCN00539	ITEM 1 AND 2 UPDATED FOR EASE OF MANUFACTURE	11.03.2018	RLWjr	JPB



SIDE VIEW

BACK VIEW
W/COVERS REMOVED

ITEM NO.	QTY REQD	PART NUMBER	DESCRIPTION
1	1	W-001-128	15' SUPPORT BASE, WELDMENT
2	1	W-001-153	15' TILT UP TOWER UPPER WELDMENT
3	1	1002-0050-0003	WINCH KIT (1/4" X 14' WIRE ROPE)
4	1	400-004-3050-0612	WINCH COVER
5	1	309-000-0002	EDGE GUARD, 1/2", CUT AT 11" LG.
6	2	400-000-0902	1" SCH. 40 PVC SLEEVE
7	1	002-0BG-0081	BOLT, HX HD, 1.00-8UNC X 7.00 LG, GR B7, GALV
8	1	002-0BG-0226	BOLT, HX HD, 1.00-8UNC X 5.00 LG, GR B7, GALV
9	4	002-0BG-0210	BOLT, HX HD, 1.00-8UNC X 4.00 LG, ASTM A193 GR B7, GALV
10	6	002-0NG-0000	NUT, HX, ANCO LOCK, 1.00-8UNC, GR 2H, GALV
11	4	002-0LW-G008	WASHER, SPLIT LOCK, 1.00", GALV
12	8	002-0FW-G009	WASHER, FLAT, 1.00", F436, GALV
13	2	002-0BG-0216	BOLT, HX HD, .75-10UNC X 6.50 LG, ASTM A325, GALV.
14	2	002-0NG-0019	NUT, HX, .75-10UNC, GR DH, GALV
15	2	002-0LW-G003	WASHER, SPLIT LOCK, .75", GALV
16	4	002-0FW-G000	WASHER, FLAT, .75 INCH, USS, GALV

SURFACE FINISH <input checked="" type="checkbox"/> UNLESS OTHERWISE SPECIFIED		UNLESS OTHERWISE SPECIFIED DIMENSIONS ARE IN INCHES		APPROVALS		DATE		 ELECTRO MECHANICAL INDUSTRIES, INC. 11230 NEESEHAW DRIVE HOUSTON, TEXAS 77065 1-800-453-0050	
MATERIAL SEE PARTS LIST		TOLERANCES 0 ±.06 .00 ±.01 .000 ±.005		DRAWN RLWjr		11.02.2018		TITLE: 15' TILT UP TOWER, STRIPPED DOWN	
THIRD ANGLE PROJECTION 		FRACTIONS ± 1/16 ANGLES ± .25°		CHECKED P. GUTIERREZ		11.05.2018		ENGINEER/DESIGNER J. BREEN	
NEXT ASSY		HOLES: DRILLED OR PUNCHED +1/32 BURNED ±1/32		PRODUCTION J. SUNDERLAND		11.06.2018		SIZE B	
APPLICATIONS				DRAWING NO. 1002-0030-0034		REV 1		SCALE: 1:48 WEIGHT: 370.33 lbs. SHEET 1 OF 1	

PATENT # 8,910,432