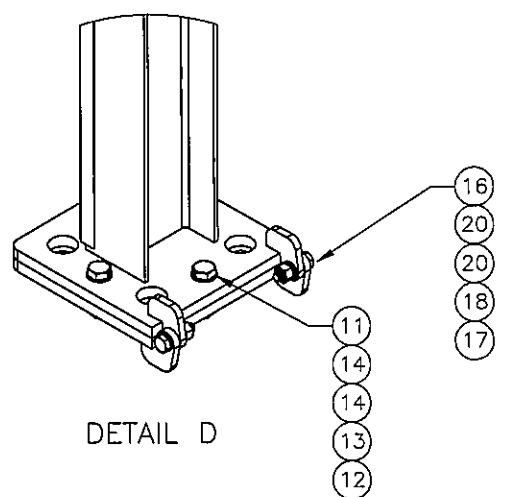
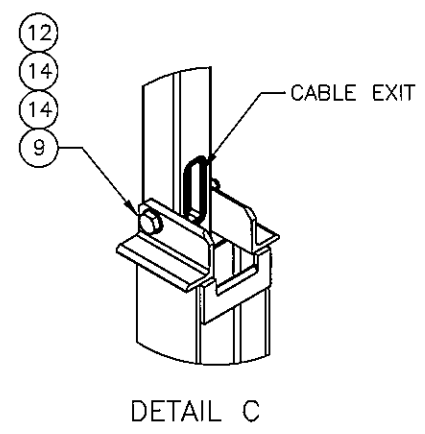
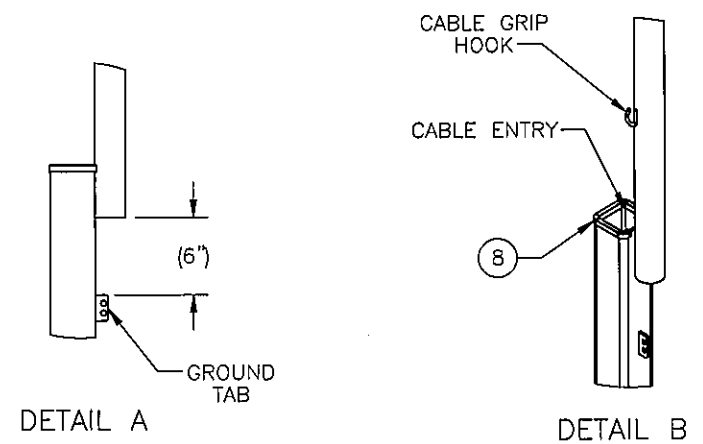
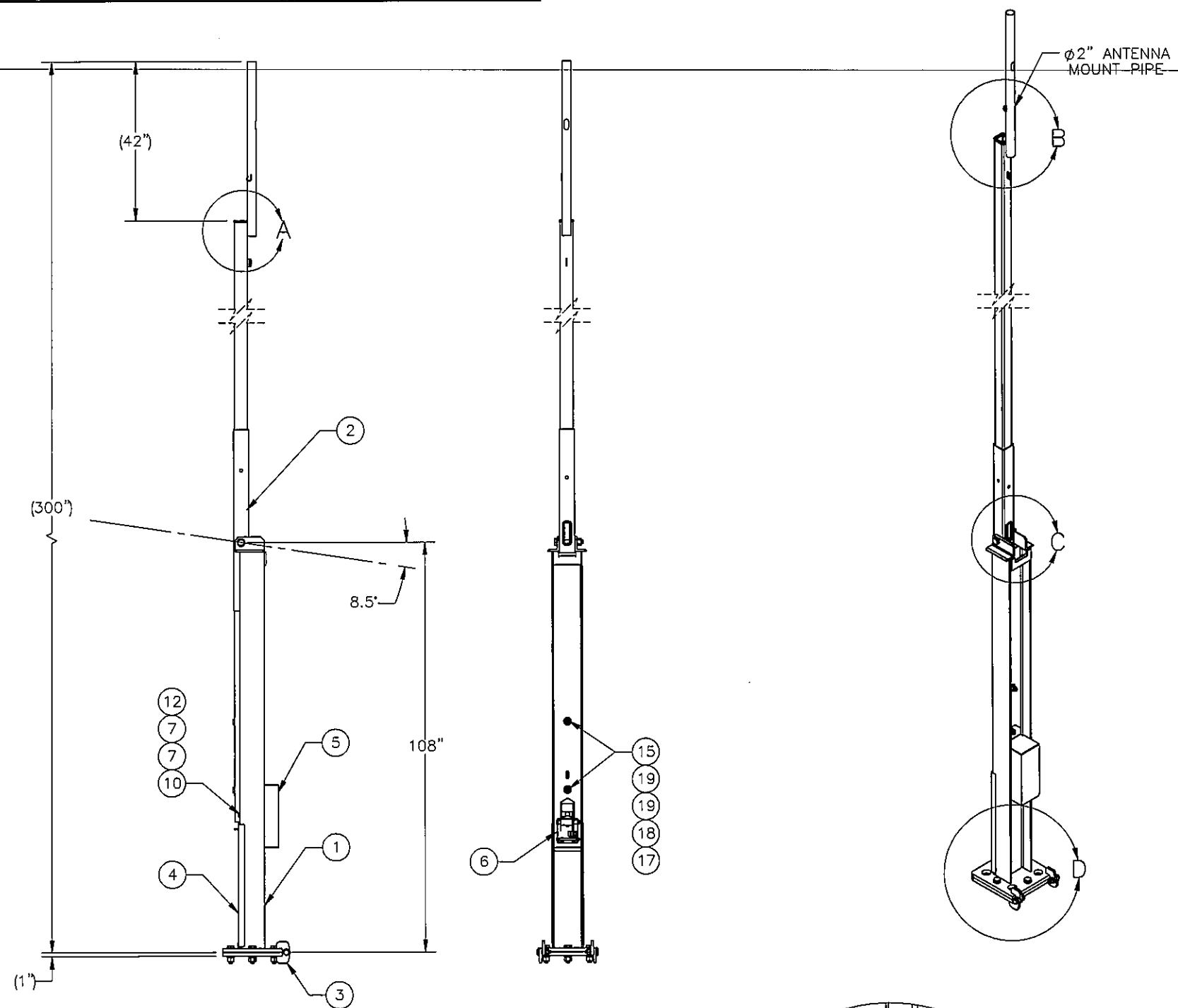


THE INFORMATION CONTAINED IN THIS DRAWING IS THE SOLE PROPERTY OF ELECTRO MECHANICAL INDUSTRIES, INC. ANY REPRODUCTION IN PART OR WHOLE WITHOUT THE WRITTEN PERMISSION OF ELECTRO MECHANICAL IND., IS PROHIBITED.

REVISIONS					
REV.	DCN #	DESCRIPTION	DATE	BY	APPROVED
2	DCN00869	ADDED SAFETY DECAL AND UPDATED HARDWARE	2020.06.25	BLH	JPB



90 MPH EIA/TIA REV G
PATENT PENDING: #61322706

ITEM NO.	QTY	PART NUMBER	DESCRIPTION	LENGTH	Weight
1	1	W-000-266	SUPPORT BASE ASSEMBLY		299.95
2	1	W-000-591	MAST WELDMENT		246.0
3	1	400-004-3050-0630	LOWER HINGE BASE ASSEMBLY		69.28
4	1	400-004-3050-0629	FRONT COVER - NOTCHED		8.00
5	1	400-004-3050-0612	WINCH COVER		8.74
6	1	1002-0050-0003	WINCH KIT (1/4" X 14' WIRE ROPE)		8.7
7	2	400-000-0902	1" SCH. 40 PVC SLEEVE		0.024
8	1	309-000-0003-09	EDGE GUARD, 1/4", 9" LG.	9"	0.0
9	1	002-0BG-0081	BOLT, HX HD, 1.00-8UNC X 7.00 LG, GR B7, GALV		1.90
10	1	002-0BG-0226	BOLT, HX HD, 1.00-8UNC X 5.00 LG, GR B7, GALV		1.44
11	4	002-0BG-0210	BOLT, HX HD, 1.00-8 X 4.00 LG, ASTM A193 GR B7, GALV		1.21
12	6	002-0NG-0000	NUT, HX, ANCO LOCK, 1.00-8UNC, GR 2H, GALV		0.43
13	4	002-0LW-G008	WASHER, SPLIT LOCK, 1.00", GALV		0.09
14	10	002-0FW-G009	WASHER, FLAT, 1.00", F436, GALV.		0.08
15	2	002-0BG-0216	BOLT, HX HD, .75-10UNC X 6.50 LG, ASTM A325, GALV.		1.0
16	2	002-0BG-0022	BOLT, HX HD, .75-10UNC X 3.00 LG, A325, GALV.		0.53
17	4	002-0NG-0002	NUT, HX, .75-10UNC, GR 2H, GALV		0.19
18	4	002-0LW-G003	WASHER, SPLIT LOCK, .75", GALV		0.04
19	4	002-0FW-G015	WASHER, FLAT, .75 INCH, TYPE A, GALV		0.07
20	4	002-0FW-G003	WASHER, FLAT, .75 INCH, ASTM F436, GALV		0.04
21	2	999-999-L001	3.5" x 5" DO NOT CLIMB DECAL		0.01
22	2	999-999-L002	3.5" x 5" PINCH POINT DECAL		0.01
23	1	999-999-L003	3.5" x 5" WINCH RATING DECAL		0.01

SURFACE FINISH <input checked="" type="checkbox"/> UNLESS OTHERWISE SPECIFIED		UNLESS OTHERWISE SPECIFIED DIMENSIONS ARE IN INCHES		APPROVALS		DATE	
MATERIAL SEE PARTS LIST		TOLERANCES		DRAWN J. CRITELLI		7.11.17	
THIRD ANGLE PROJECTION		.0 ± .06 .00 ± .01 .000 ± .005		CHECKED C. SANCHEZ		7.13.17	
NEXT ASSY		FRACTIONS ± 1/16		ENGINEER/DESIGNER J. BUSHMAN		7.17.17	
USED ON		ANGLES ± .25°		PRODUCTION J. BOWLDS		7.17.17	
APPLICATIONS		HOLES: DRILLED OR PUNCHED +1/32		TITLE: 25' TILT-UP TOWER		SIZE B	
		BURNED ± 1/32		DRAWING NO. 1002-0030-0028		REV 2	
				SCALE: 1:36		WEIGHT: 657.2 lbs.	
						SHEET 1 OF 1	

