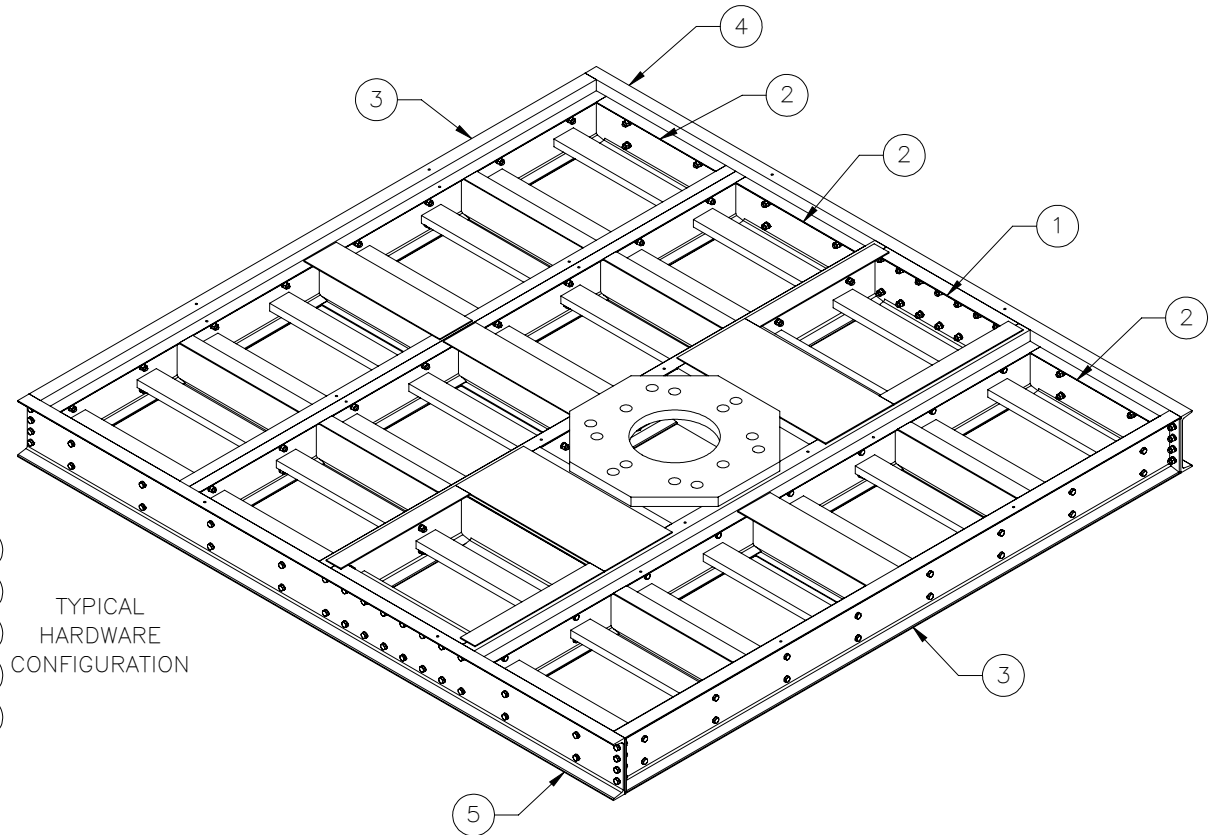
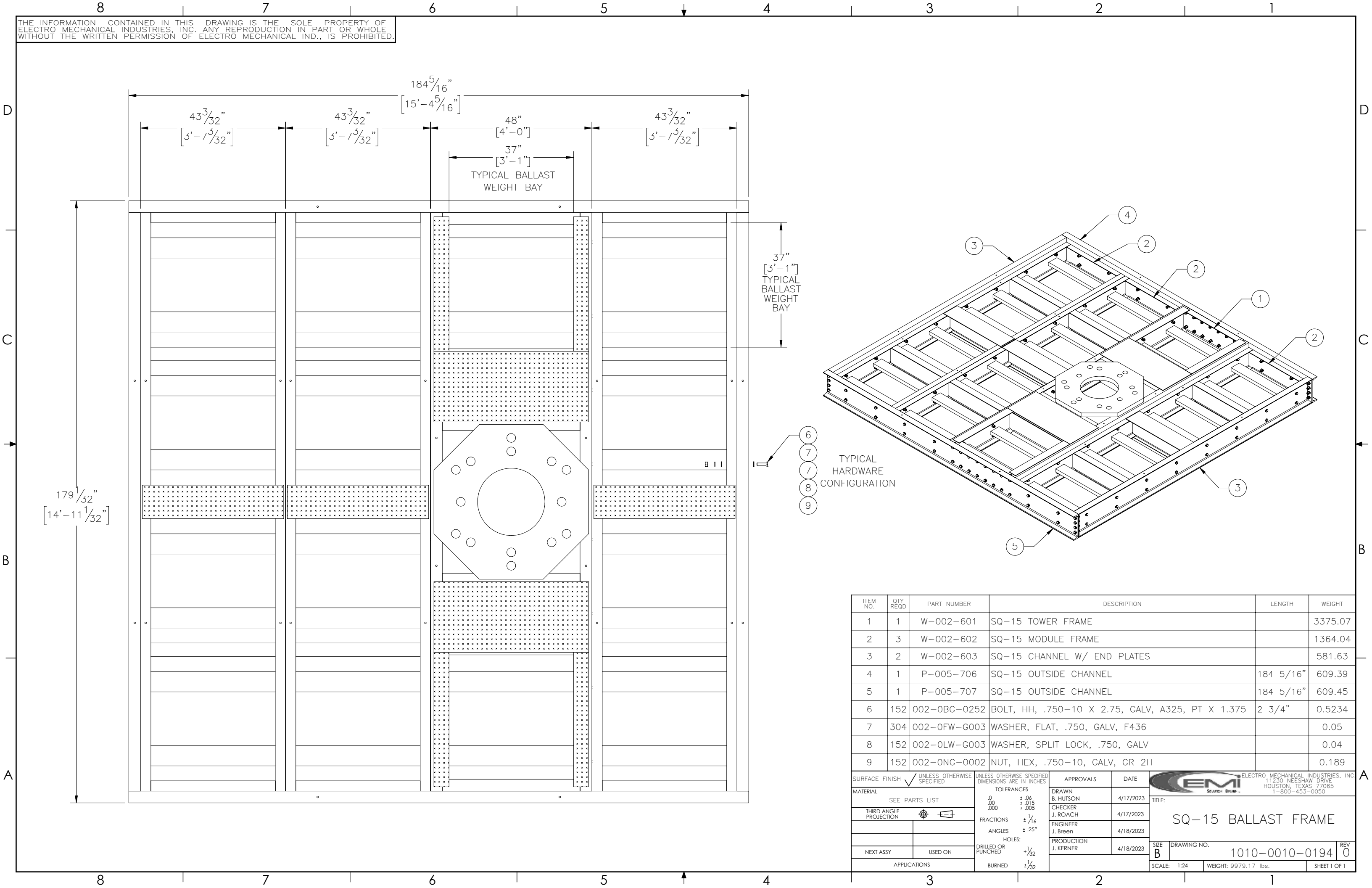

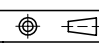


THE INFORMATION CONTAINED IN THIS DRAWING IS THE SOLE PROPERTY OF ELECTRO MECHANICAL INDUSTRIES, INC. ANY REPRODUCTION IN PART OR WHOLE WITHOUT THE WRITTEN PERMISSION OF ELECTRO MECHANICAL IND., IS PROHIBITED.



TYPICAL HARDWARE CONFIGURATION

ITEM NO.	QTY REQD	PART NUMBER	DESCRIPTION	LENGTH	WEIGHT
1	1	W-002-601	SQ-15 TOWER FRAME		3375.07
2	3	W-002-602	SQ-15 MODULE FRAME		1364.04
3	2	W-002-603	SQ-15 CHANNEL W/ END PLATES		581.63
4	1	P-005-706	SQ-15 OUTSIDE CHANNEL	184 5/16"	609.39
5	1	P-005-707	SQ-15 OUTSIDE CHANNEL	184 5/16"	609.45
6	152	002-0BG-0252	BOLT, HH, .750-10 X 2.75, GALV, A325, PT X 1.375	2 3/4"	0.5234
7	304	002-0FW-G003	WASHER, FLAT, .750, GALV, F436		0.05
8	152	002-0LW-G003	WASHER, SPLIT LOCK, .750, GALV		0.04
9	152	002-0NG-0002	NUT, HEX, .750-10, GALV, GR 2H		0.189

SURFACE FINISH <input checked="" type="checkbox"/> UNLESS OTHERWISE SPECIFIED		UNLESS OTHERWISE SPECIFIED DIMENSIONS ARE IN INCHES		APPROVALS		DATE		 ELECTRO MECHANICAL INDUSTRIES, INC. 11230 NEESEHAW DRIVE HOUSTON, TEXAS 77065 1-800-453-0050	
MATERIAL SEE PARTS LIST		TOLERANCES		DRAWN B. HUTSON		4/17/2023		TITLE: SQ-15 BALLAST FRAME	
THIRD ANGLE PROJECTION 		.0 ±.06 .00 ±.015 .000 ±.005		CHECKER J. ROACH		4/17/2023			
		FRACTIONS ± 1/16		ENGINEER J. Breen		4/18/2023			
		ANGLES ± .25°		PRODUCTION J. KERNER		4/18/2023			
NEXT ASSY		HOLES: DRILLED OR PUNCHED ± 1/32						SIZE B	
APPLICATIONS		BURNED ± 1/32						DRAWING NO. 1010-0010-0194	
								REV 0	
								SCALE: 1:24	
								WEIGHT: 9979.17 lbs.	
								SHEET 1 OF 1	