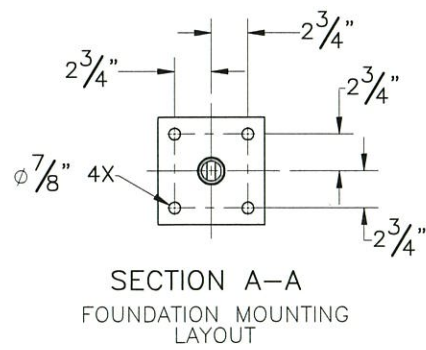
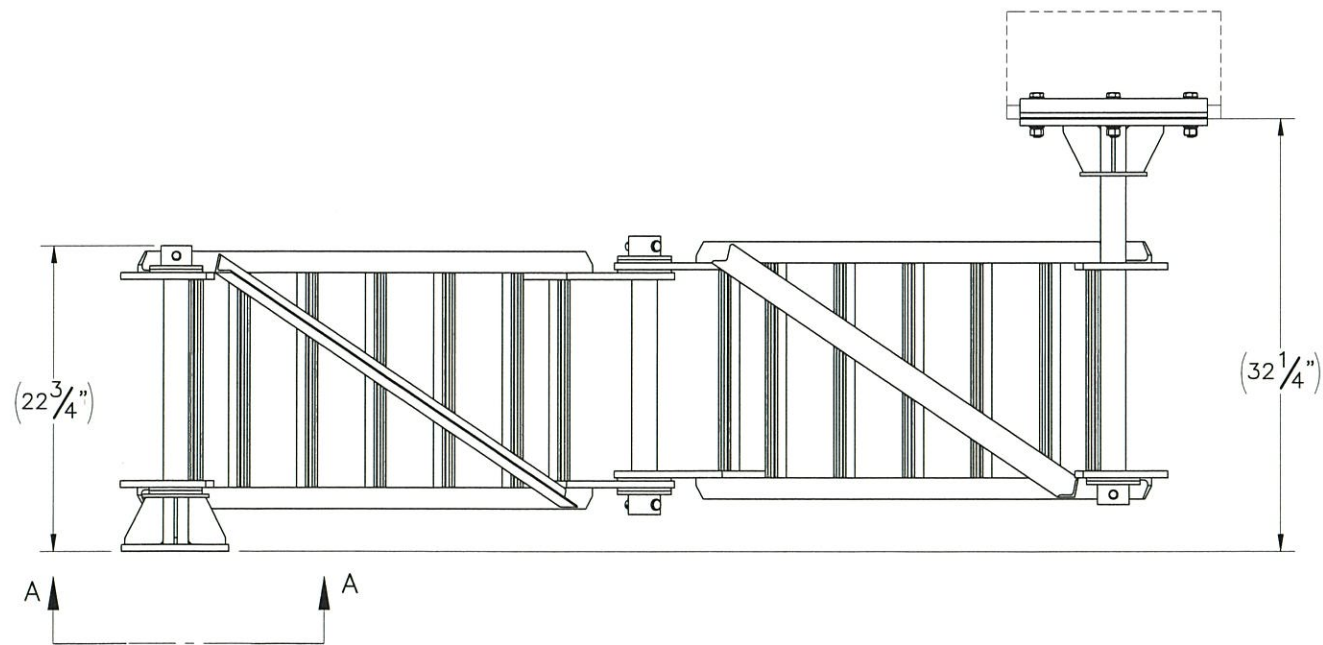
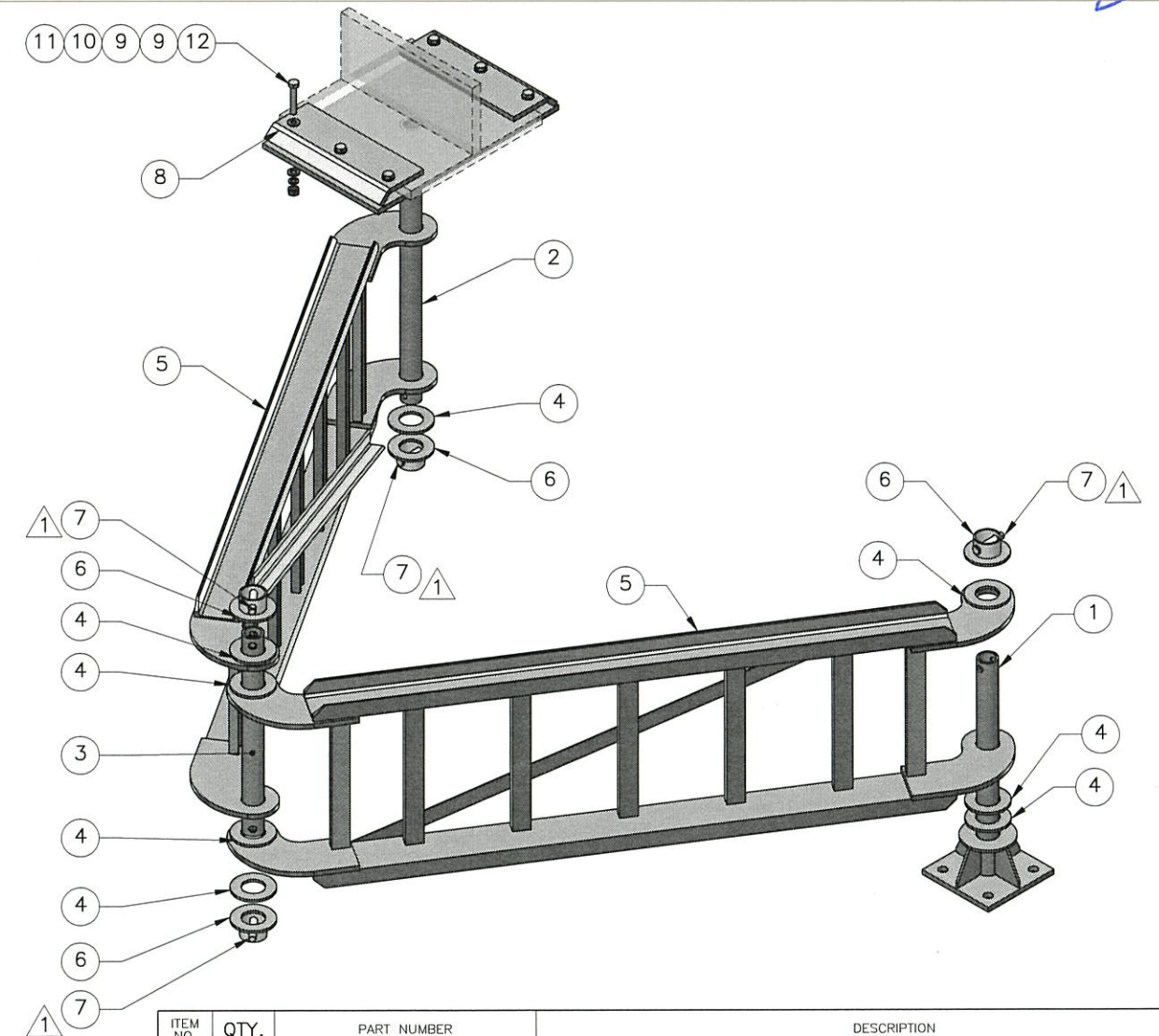
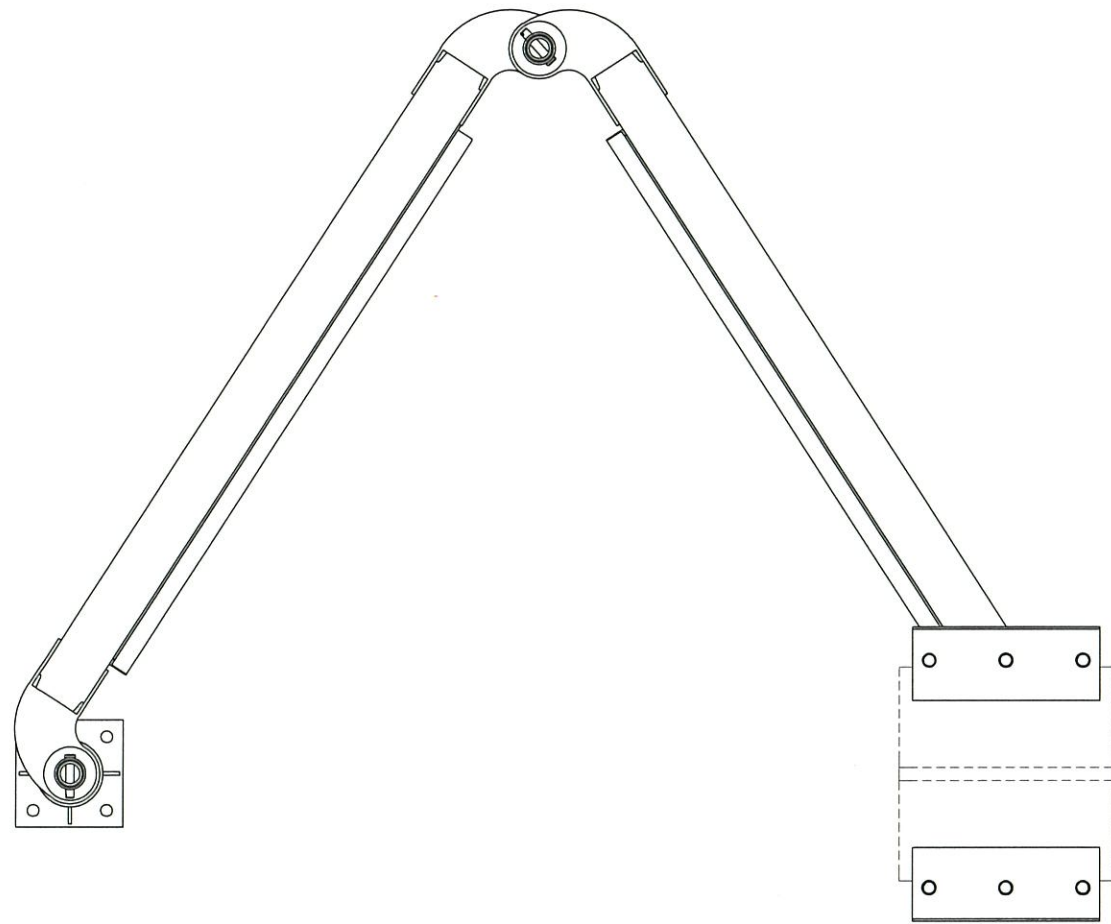


THE INFORMATION CONTAINED IN THIS DRAWING IS THE SOLE PROPERTY OF ELECTRO MECHANICAL INDUSTRIES, INC. ANY REPRODUCTION IN PART OR WHOLE WITHOUT THE WRITTEN PERMISSION OF ELECTRO MECHANICAL IND., IS PROHIBITED.

REVISIONS					
REV.	DCN #	DESCRIPTION	DATE	BY	APPROVED
1	DCN00469	UPDATED DESCRIPTION OF CLEVIS PIN	6.7.18	PCG	



ITEM NO.	QTY.	PART NUMBER	DESCRIPTION
1	1	W-000-020	FIXED PIVOT
2	1	W-000-854	CEILING PIVOT
3	1	P-002-074	CENTER PIPE, 1 1/2 SCH.80, X 20 3/4" LG., ASTM A500 GR. B STL.
4	8	P-000-036	SKID PAD
5	2	W-000-825	HINGE ARM
6	4	W-000-024	PIPE CAP ASSEMBLY
7	4	MCM92401A274	CLEVIS PIN, 5/8 DIA X 2.75 USABLE
8	2	P-002-081	PLATE
9	12	002-0FW-G002	WASHER, FLAT, .500", F436, GALV
10	6	002-0LW-G002	WASHER, SPLIT LOCK, .500", GALV
11	6	002-0NG-0005	NUT, HEX, ANCO LOCKNUT, .500-13UNC, GR 2H, GALV
12	6	002-0BG-0225	BOLT, .500-13UNC X 3" LG, GR 8, GALV

SURFACE FINISH <input checked="" type="checkbox"/> UNLESS OTHERWISE SPECIFIED		UNLESS OTHERWISE SPECIFIED DIMENSIONS ARE IN INCHES		APPROVALS	DATE	ELECTRO MECHANICAL INDUSTRIES, INC. 11230 NEESEAW DRIVE HOUSTON, TEXAS 77065 1-800-453-0050
MATERIAL	SEE PARTS LIST	TOLERANCES		DRAWN	5/18/18	
THIRD ANGLE PROJECTION		.00	±.06	CHECKED	5/18/18	
		.000	±.005	ENGINEER/DESIGNER	5/18/18	
		FRACTIONS	± 1/16	PRODUCTION	5/18/18	
		ANGLES	± .25°	J. SUNDERLAND		SIZE: B DRAWING NO.: 1010-0000-0174 SCALE: 1:14 WEIGHT: 308 lbs. SHEET 1 OF 1
NEXT ASSY	USED ON	HOLES:	DRILLED OR PUNCHED			REV: 1
			BURNED			

NOTE: ALL STEEL ITEMS ARE GALVANIZED PER A123