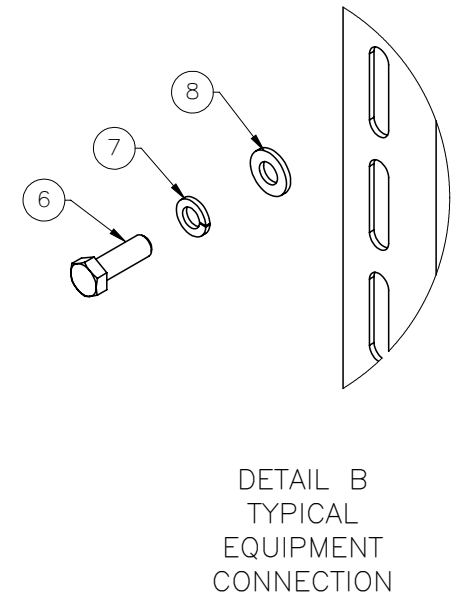
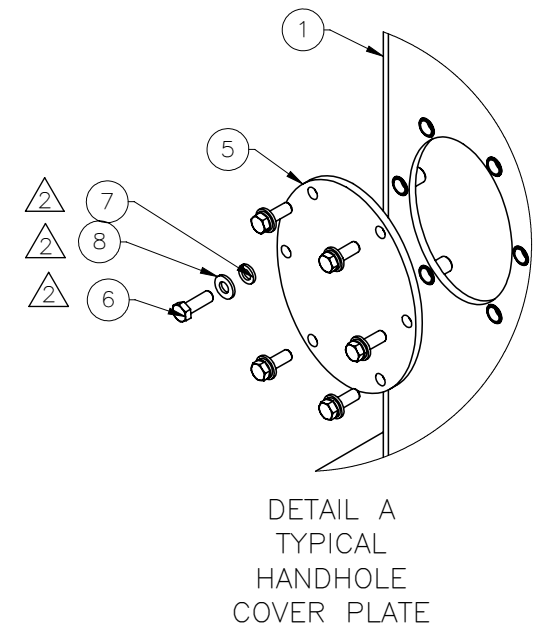
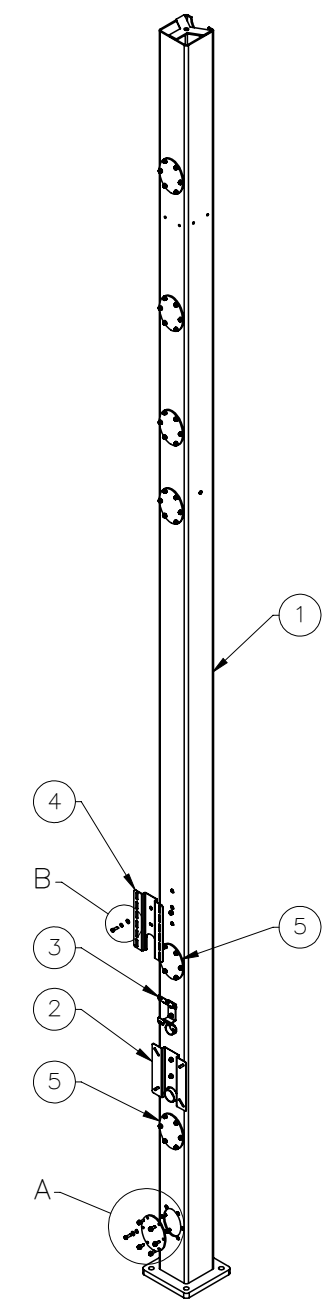
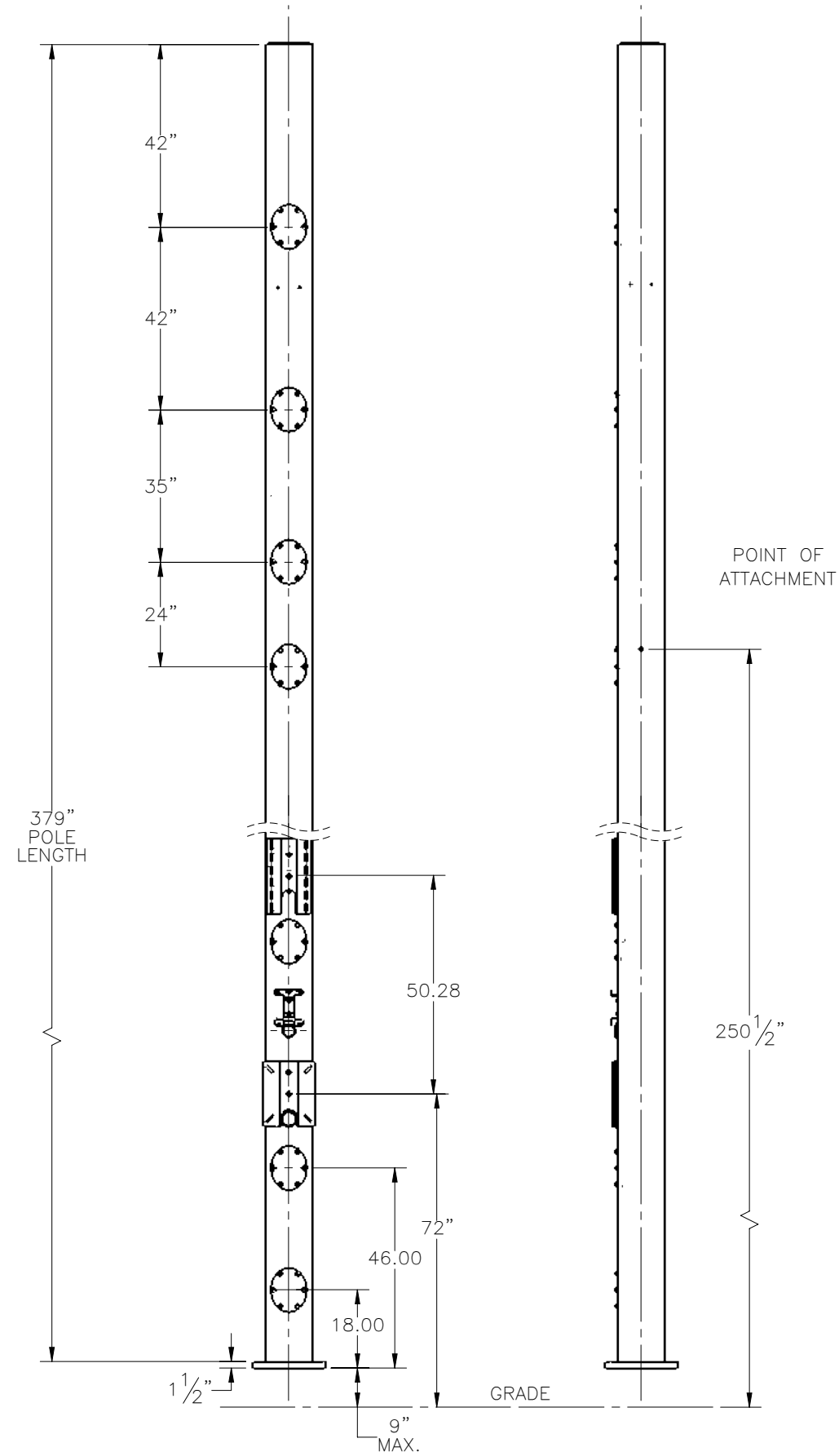

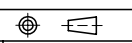


THE INFORMATION CONTAINED IN THIS DRAWING IS THE SOLE PROPERTY OF ELECTRO MECHANICAL INDUSTRIES, INC. ANY REPRODUCTION IN PART OR WHOLE WITHOUT THE WRITTEN PERMISSION OF ELECTRO MECHANICAL IND., IS PROHIBITED.

REVISIONS					
REV.	DCN #	DESCRIPTION	DATE	BY	APPROVED
2	DCN01006	VISUALLY UPDATED TOP LEVEL TO SHOW HOLES ADDED FOR RADIO MOUNTING KIT, ADDED HAND HOLE COVERS & HARDWARE.	2/10/2021	MCG	FJM



ITEM NO.	QTY REQ D	PART NUMBER	DESCRIPTION	LENGTH	WEIGHT
1	1	1002-0000-0020	35' BARE MONOPOLE, SQUARE TUBE		1567.66
2	1	P-003-178	EQUIPMENT HAT, MILBANK METER ENCLOSURE		7.1
3	1	P-003-480	EQUIPMENT HAT, LOAD CENTER 1/2" HDW		1.3
4	1	P-003-159	EQUIPMENT HAT, CHARLES FIBER ENCLOSURE		6.5
5	7	P-003-481	COVER PLATE		6.77
6	48	002-0BG-0050	BOLT, HX HD, .500-13UNC, 1.50 LG, GR 5, GALV		0.13
7	48	002-0LW-G002	WASHER, SPLIT LOCK, .500", GALV		0.01
8	48	002-0FW-G002	WASHER, FLAT, .500", F436, GALV		0.02

SURFACE FINISH <input checked="" type="checkbox"/> UNLESS OTHERWISE SPECIFIED		UNLESS OTHERWISE SPECIFIED DIMENSIONS ARE IN INCHES		APPROVALS		DATE		 ELECTRO MECHANICAL INDUSTRIES, INC. 11230 NEESEHAW DRIVE HOUSTON, TEXAS 77065 1-800-453-0050	
MATERIAL SEE PARTS LIST		TOLERANCES		DRAWN B. HUTSON		9/13/2019			
THIRD ANGLE PROJECTION 		.0 ±.06 .00 ±.015 .000 ±.005		CHECKER J. BREEN		9/26/2019		TITLE: 35' STRAIGHT MONOPOLE, SQUARE TUBE	
NEXT ASSY USED ON		FRACTIONS ± 1/16 ANGLES ± .25°		ENGINEER J. BREEN		9/26/2019			
APPLICATIONS		HOLES: DRILLED OR PUNCHED ± 1/32 BURNED ± 1/32		PRODUCTION J.K.S.		9/26/2019		SIZE B DRAWING NO. 1002-0020-0053 REV 2 SCALE: 1:4 WEIGHT: 1637.73 lbs. SHEET 1 OF 1	