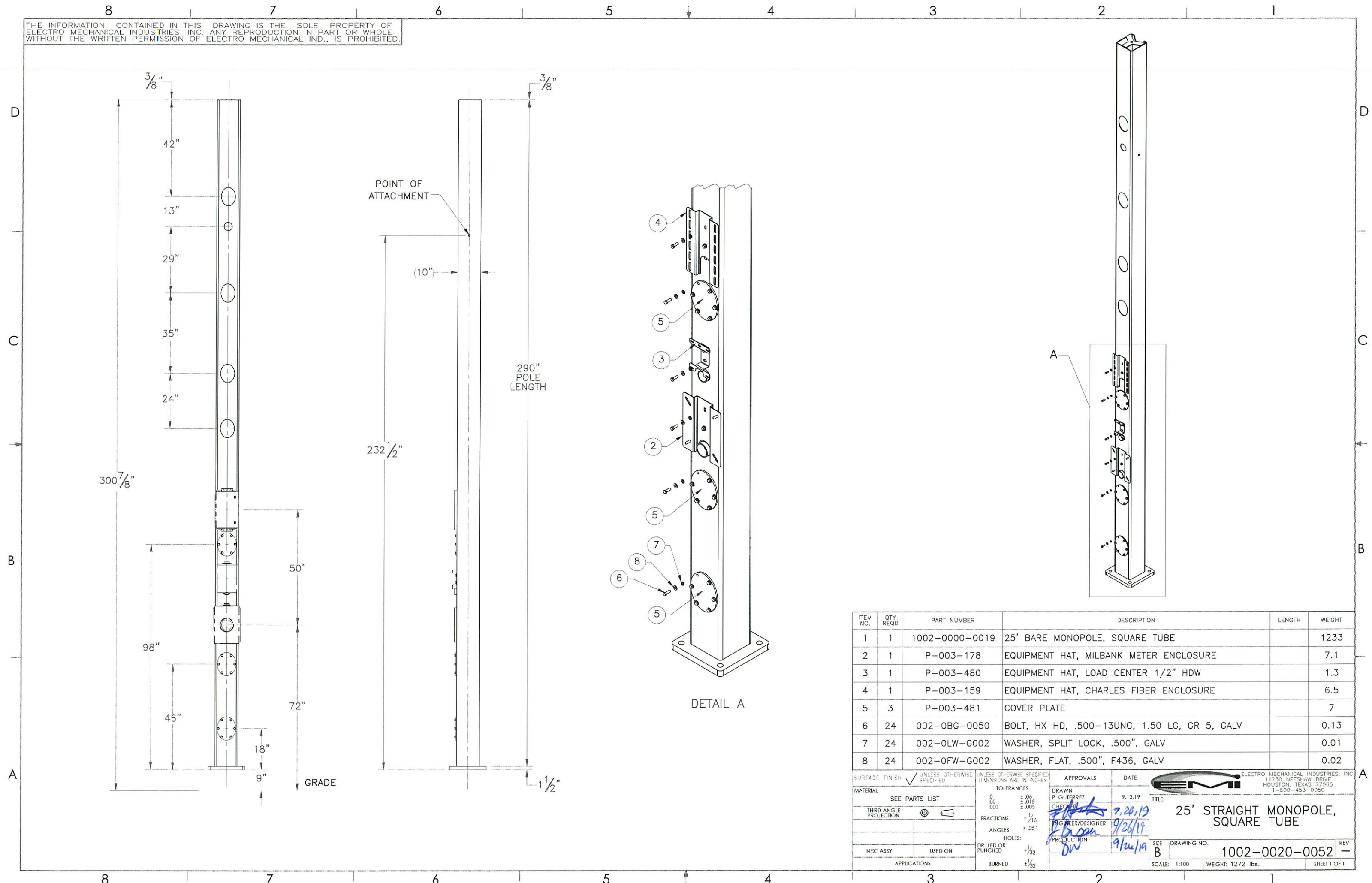




THE INFORMATION CONTAINED IN THIS DRAWING IS THE SOLE PROPERTY OF ELECTRO MECHANICAL INDUSTRIES, INC. ANY REPRODUCTION IN PART OR WHOLE WITHOUT THE WRITTEN PERMISSION OF ELECTRO MECHANICAL IND., IS PROHIBITED.



ITEM NO.	QTY REQD	PART NUMBER	DESCRIPTION	LENGTH	WEIGHT
1	1	1002-0000-0019	25' BARE MONOPOLE, SQUARE TUBE		1233
2	1	P-003-178	EQUIPMENT HAT, MILBANK METER ENCLOSURE		7.1
3	1	P-003-480	EQUIPMENT HAT, LOAD CENTER 1/2" HDW		1.3
4	1	P-003-159	EQUIPMENT HAT, CHARLES FIBER ENCLOSURE		6.5
5	3	P-003-481	COVER PLATE		7
6	24	002-0BG-0050	BOLT, HX HD, .500-13UNC, 1.50 LG, GR 5, GALV		0.13
7	24	002-0LW-G002	WASHER, SPLIT LOCK, .500", GALV		0.01
8	24	002-0FW-G002	WASHER, FLAT, .500", F436, GALV		0.02

SURFACE FINISH <input checked="" type="checkbox"/> UNLESS OTHERWISE SPECIFIED		UNLESS OTHERWISE SPECIFIED DIMENSIONS ARE IN INCHES		APPROVALS	DATE	 ELECTRO MECHANICAL INDUSTRIES, INC. 11230 NEECHAW DRIVE HOUSTON, TEXAS 77065 1-800-453-0050
MATERIAL	SEE PARTS LIST	TOLERANCES		DRAWN P. GUTERREZ	9.13.19	
THIRD ANGLE PROJECTION		FRACTIONS	± 1/16	CHECKED <i>[Signature]</i>	9/26/19	TITLE 25' STRAIGHT MONOPOLE, SQUARE TUBE
NEXT ASSY	USED ON	ANGLES	± .25°	ENGINEER/DESIGNER <i>[Signature]</i>	9/26/19	SIZE B
APPLICATIONS		HOLES:		PRODUCTION <i>[Signature]</i>	9/26/19	DRAWING NO. 1002-0020-0052
		DRILLED OR PUNCHED	+1/32			SCALE: 1:100
		BURNED	±1/32			WEIGHT: 1272 lbs.
						SHEET 1 OF 1