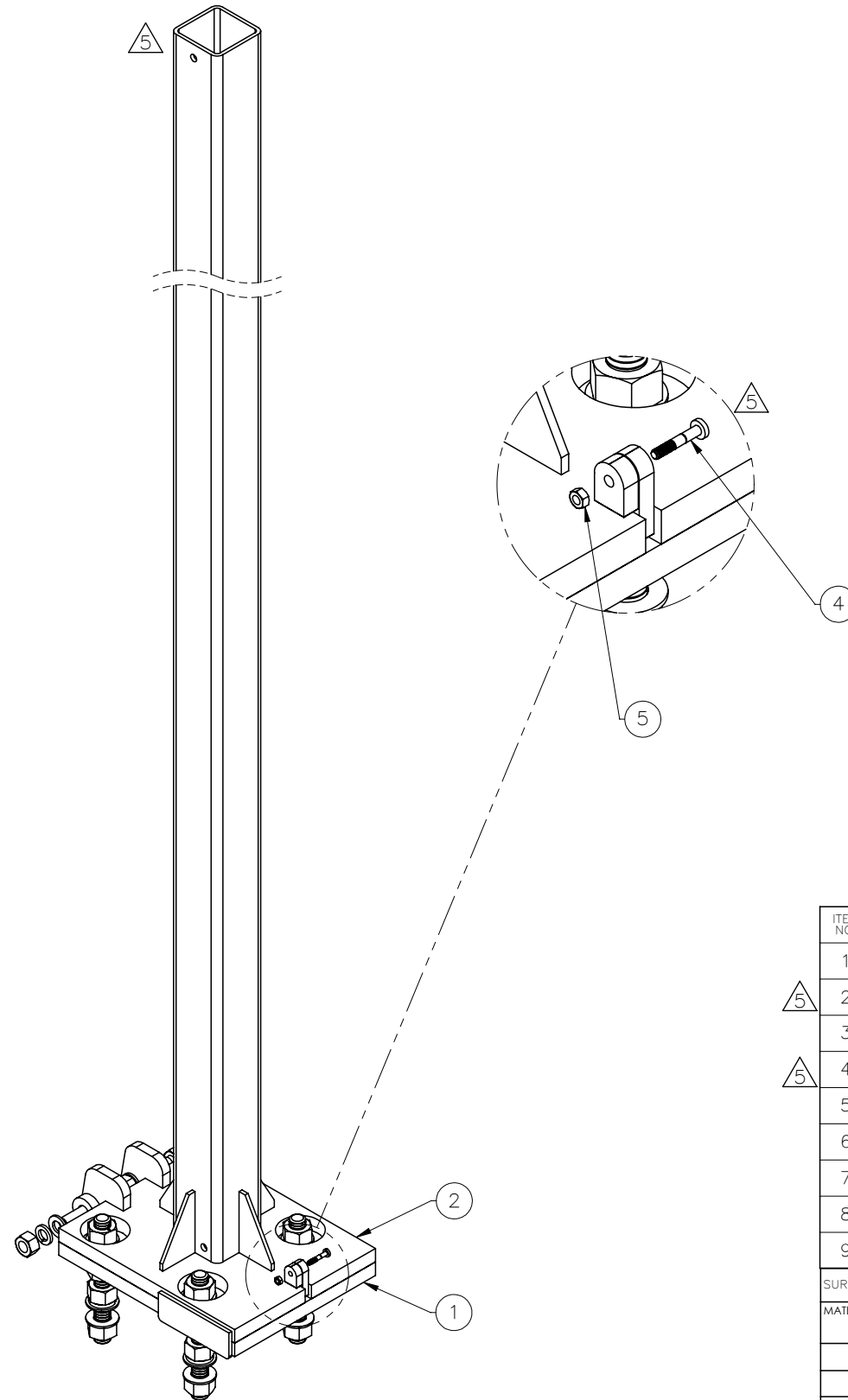
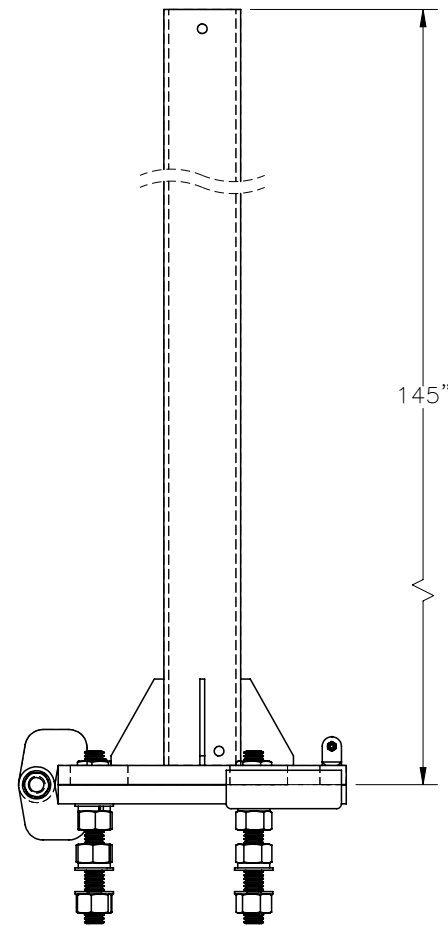
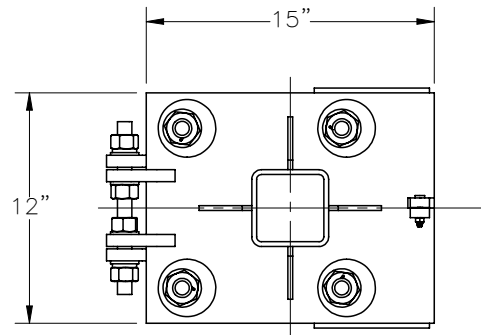

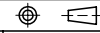


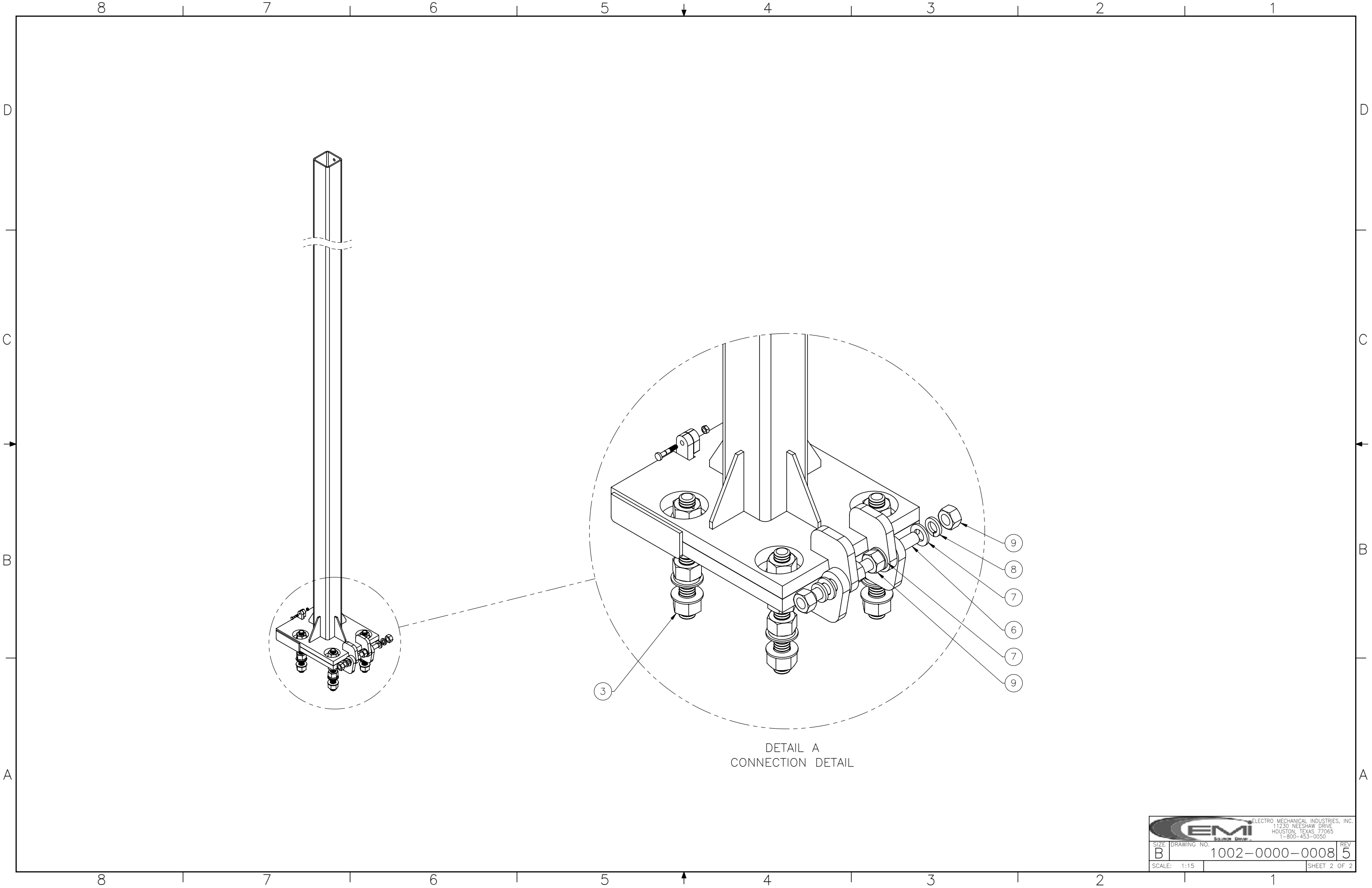
THE INFORMATION CONTAINED IN THIS DRAWING IS THE SOLE PROPERTY OF ELECTRO MECHANICAL INDUSTRIES, INC. ANY REPRODUCTION IN PART OR WHOLE WITHOUT THE WRITTEN PERMISSION OF ELECTRO MECHANICAL IND., IS PROHIBITED.

REVISIONS					
REV.	DCN #	DESCRIPTION	DATE	BY	APPROVED
5	01258	VISUALL UPDATED MAST/SHEER PIN	10/25/2023	FJB	JPB



ITEM NO.	QTY REQD	PART NUMBER	DESCRIPTION	LENGTH	WEIGHT
1	1	W-000-932	SWIVEL PLATE WELDMENT		53
2	1	W-000-931	6' BREAK OVER TOWER WELDMENT		196.4577
3	1	1000-0020-0077	QUAD MOUNT 1" LEVELING HARDWARE KIT		15.2
4	1	P-002-305	SHEAR PIN, 1 5/8" X 1/4"	1 5/8"	0.026
5	1	002-0NG-0014	NUT, HEX, .250-20, GALV, GR 2H		0.007
6	1	002-0AT-HA05	AT, .750-10 X 9.00, GALV, GR B7	9"	1.13
7	4	002-0FW-G003	WASHER, FLAT, .750, GALV, F436		0.05
8	2	002-0LW-G003	WASHER, SPLIT LOCK, .750, GALV		0.04
9	4	002-0NG-0002	NUT, HEX, .750-10, GALV, GR 2H		0.189

SURFACE FINISH <input checked="" type="checkbox"/> UNLESS OTHERWISE SPECIFIED		UNLESS OTHERWISE SPECIFIED DIMENSIONS ARE IN INCHES		APPROVALS		DATE		 ELECTRO MECHANICAL INDUSTRIES, INC. 11230 NEESESHAW DRIVE HOUSTON, TEXAS 77065 1-800-453-0050	
MATERIAL SEE PARTS LIST		TOLERANCES		DRAWN P. GUTIERREZ		6/27/2018			
THIRD ANGLE PROJECTION 		.0 ±.06 .00 ±.015 .000 ±.005		CHECKER J. BUSHMAN		8/6/2018		TITLE: <b>6" BREAK OVER TOWER W/ SHEAR PIN</b>	
NEXT ASSY		FRACTIONS ± 1/16		ENGINEER J. BUSHMAN		8/6/2018			
USED ON		ANGLES ± .25°		PRODUCTION J. SUNDERLAND		8/6/2023			
APPLICATIONS		HOLES: DRILLED OR PUNCHED ±1/32		SCALE: 1:10		WEIGHT: 267 lbs.		SHEET 1 OF 2	
		BURNED ±1/32		DRAWING NO. 1002-0000-0008		REV 5			



DETAIL A  
CONNECTION DETAIL