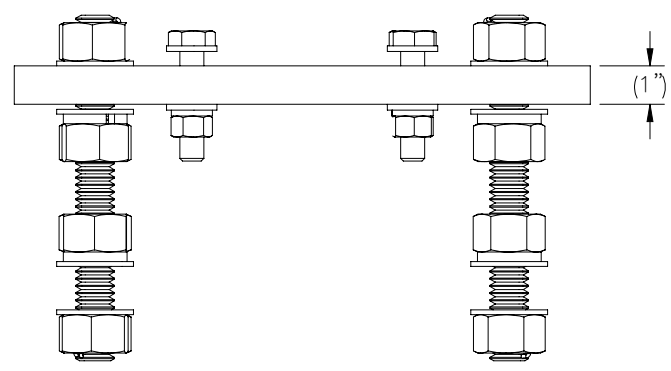
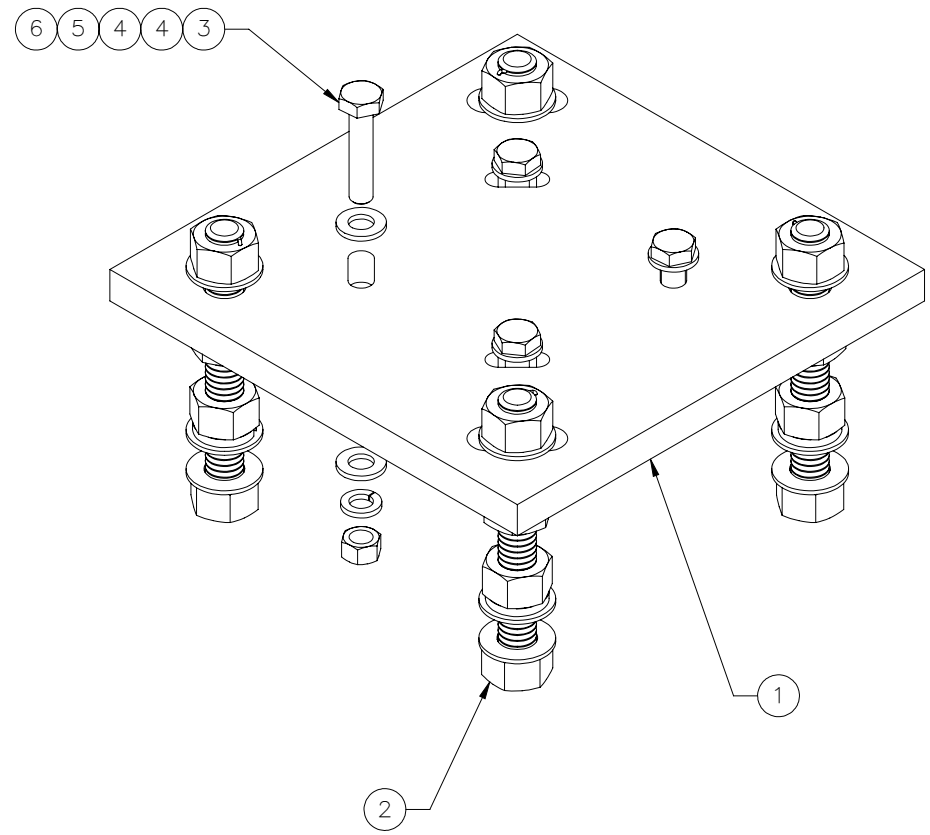
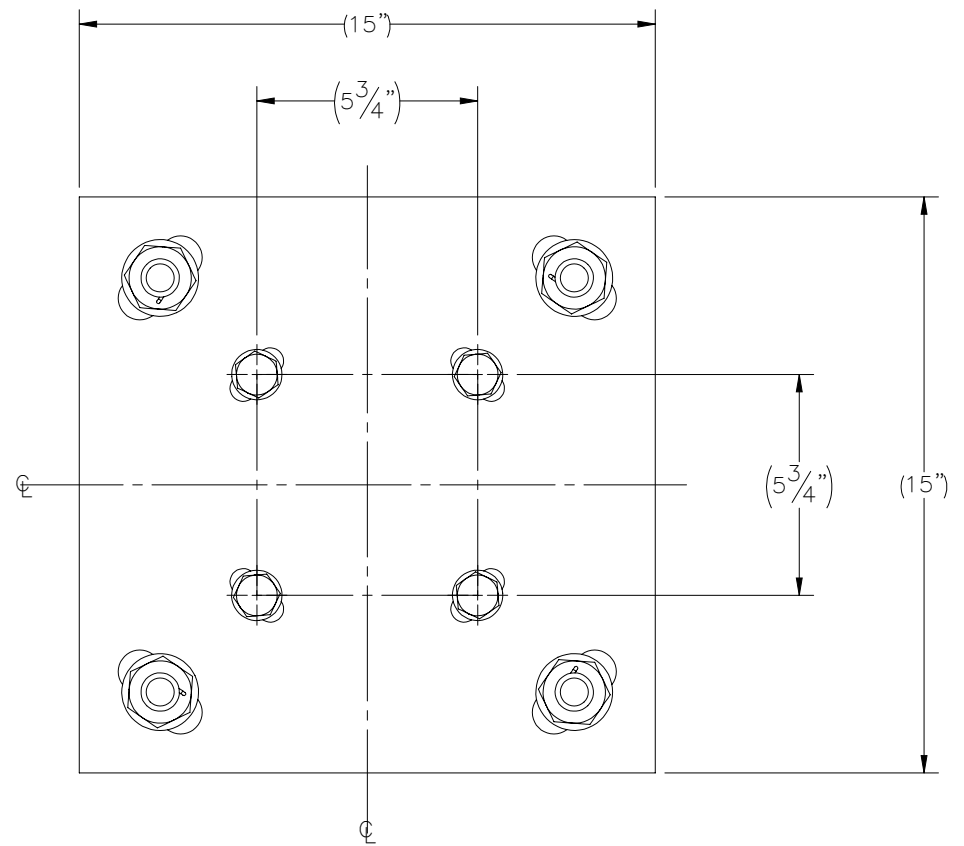

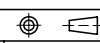


THE INFORMATION CONTAINED IN THIS DRAWING IS THE SOLE PROPERTY OF ELECTRO MECHANICAL INDUSTRIES, INC. ANY REPRODUCTION IN PART OR WHOLE WITHOUT THE WRITTEN PERMISSION OF ELECTRO MECHANICAL IND., IS PROHIBITED.



ITEM NO.	QTY REQD	PART NUMBER	DESCRIPTION	LENGTH	WEIGHT
1	1	P-005-600	BASEPLATE, MID	15"	59.56
2	1	1000-0020-0077	QUAD MOUNT LEVELING HARDWARE KIT		15.17
3	4	002-0BG-0276	BOLT, HH, .625-11 X 3.00, GALV, A325, PT X 1.25	3"	0.3687
4	8	002-0FW-G004	WASHER, FLAT, .625, GALV, F436		0.04
5	4	002-0LW-G004	WASHER, SPLIT LOCK, .625, GALV		0.03
6	4	002-0NG-0004	NUT, HEX, .625-11, GALV, GR 2H		0.070

SURFACE FINISH <input checked="" type="checkbox"/> UNLESS OTHERWISE SPECIFIED		UNLESS OTHERWISE SPECIFIED DIMENSIONS ARE IN INCHES		APPROVALS	DATE	 ELECTRO MECHANICAL INDUSTRIES, INC. 11230 NEESESHAW DRIVE HOUSTON, TEXAS 77065 1-800-453-0050
MATERIAL	SEE PARTS LIST	TOLERANCES		DRAWN	2/10/2023	
THIRD ANGLE PROJECTION		.0 ± .06 .00 ± .015 .000 ± .005		CHECKER	2/14/2023	TITLE: ADAPTER KIT, 10" HELICAL, 5.75" SQUARE 5/8" HDW
NEXT ASSY	USED ON	FRACTIONS ± 1/16 ANGLES ± .25°		ENGINEER	2/14/2023	
APPLICATIONS		HOLES: DRILLED OR PUNCHED ± 1/32 BURNED ± 1/32		PRODUCTION	2/14/2023	
				J. KERNER		SIZE B DRAWING NO. 1000-0030-0142 REV 0 SCALE: 1:5 WEIGHT: 76.92 lbs. SHEET 1 OF 1