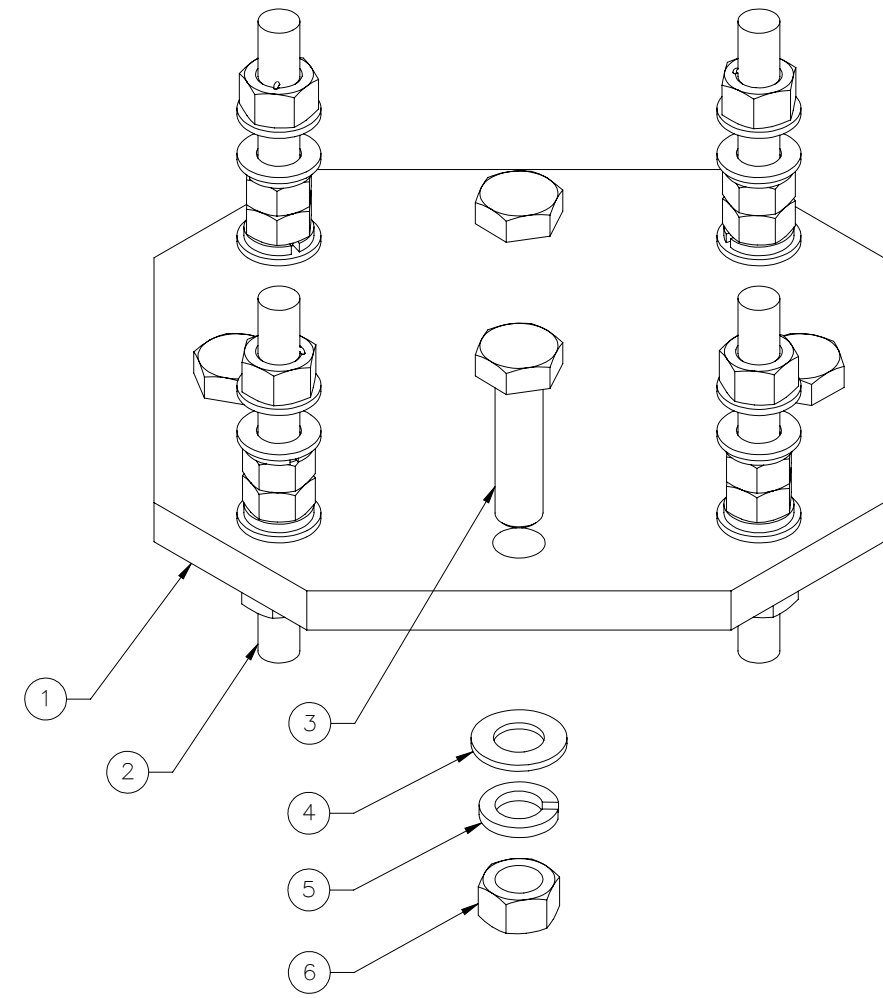
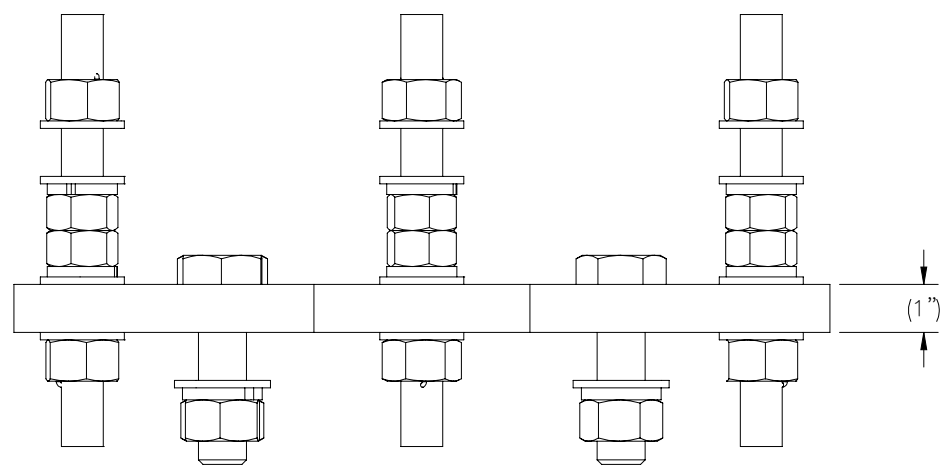
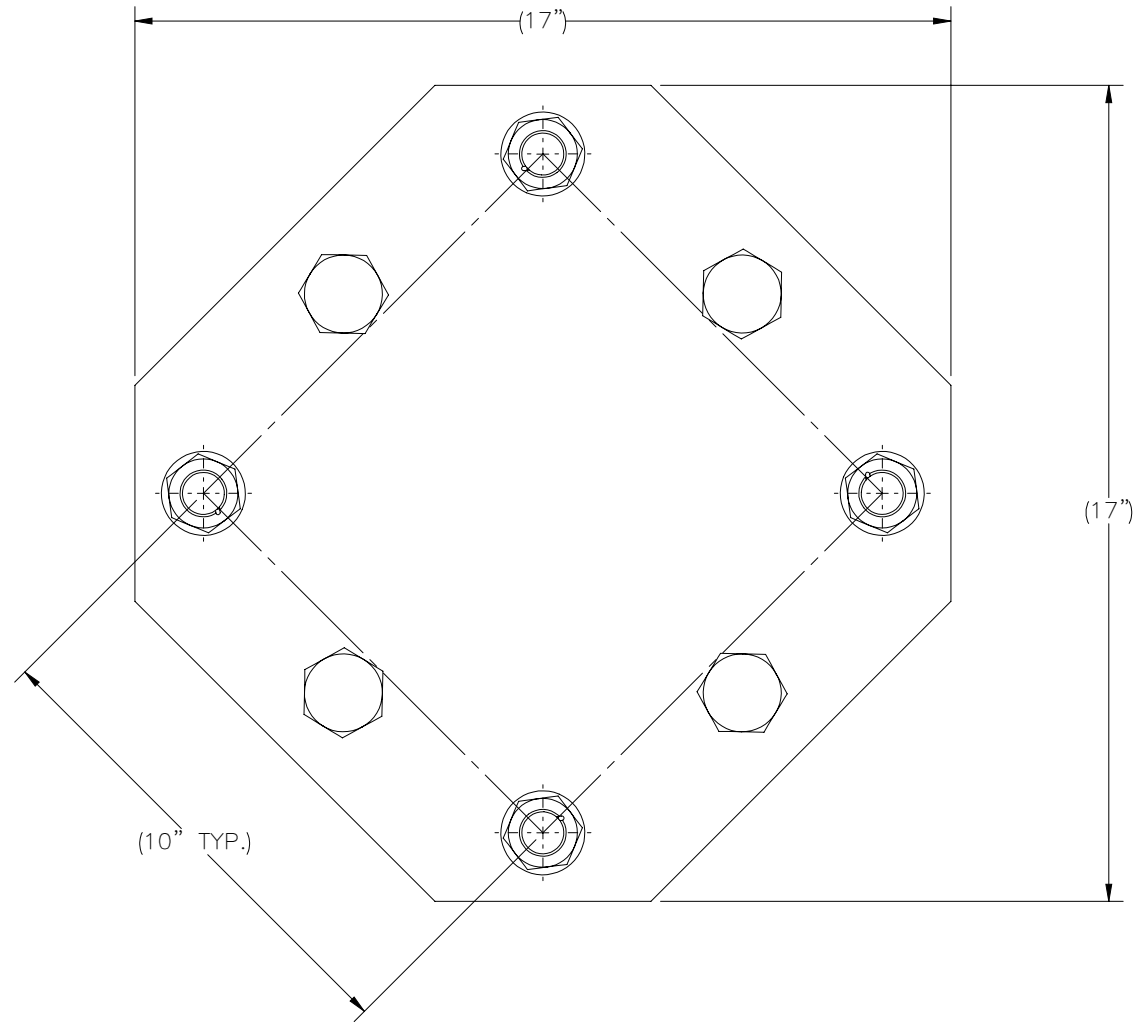

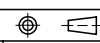


THE INFORMATION CONTAINED IN THIS DRAWING IS THE SOLE PROPERTY OF ELECTRO MECHANICAL INDUSTRIES, INC. ANY REPRODUCTION IN PART OR WHOLE WITHOUT THE WRITTEN PERMISSION OF ELECTRO MECHANICAL IND., IS PROHIBITED.



ITEM NO.	QTY REQD	PART NUMBER	DESCRIPTION	LENGTH	WEIGHT
1	1	P-006-546	BASEPLATE, MID	15 3/16"	57.95
2	1	1000-0020-0110	QUAD MOUNT .875" LEVELING HARDWARE KIT		11.68
3	4	002-0BG-0292	BOLT, HH, 1.00-8 X 3.75, GALV, A325, PT X 1.75	3 3/4"	1.2286
4	4	002-0FW-G009	WASHER, FLAT, 1.00, GALV, F436		0.10
5	4	002-0LW-G008	WASHER, SPLIT LOCK, 1.00", GALV		0.09
6	4	002-0NG-0008	NUT, HEX, 1.00-8, GALV, GR 2H		0.282

SURFACE FINISH <input checked="" type="checkbox"/> UNLESS OTHERWISE SPECIFIED		UNLESS OTHERWISE SPECIFIED DIMENSIONS ARE IN INCHES		APPROVALS		DATE		 ELECTRO MECHANICAL INDUSTRIES, INC. 11230 NEESESHAW DRIVE HOUSTON, TEXAS 77065 1-800-453-0050	
MATERIAL SEE PARTS LIST		TOLERANCES		DRAWN J. ROACH		2/10/2023			
THIRD ANGLE PROJECTION 		.0 ±.06		CHECKER J. Breen		2/15/2023		TITLE: <b>ADAPTER KIT, 6" HELICAL, 10" SQUARE, .875" HDW</b>	
NEXT ASSY USED ON		.000 ±.005		ENGINEER J. Breen		2/15/2023			
APPLICATIONS		HOLES: DRILLED OR PUNCHED ±1/32		PRODUCTION J. KERNER		2/15/2023		SIZE <b>B</b> DRAWING NO. 1000-0030-0141 REV 0	
		BURNED ±1/32						SCALE: 1:4 WEIGHT: 76.45 lbs. SHEET 1 OF 1	