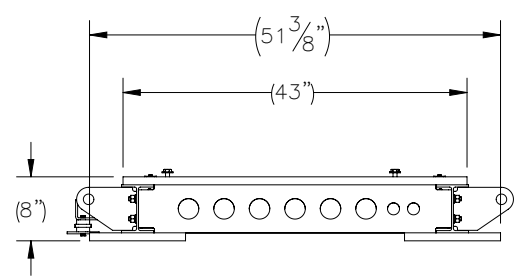
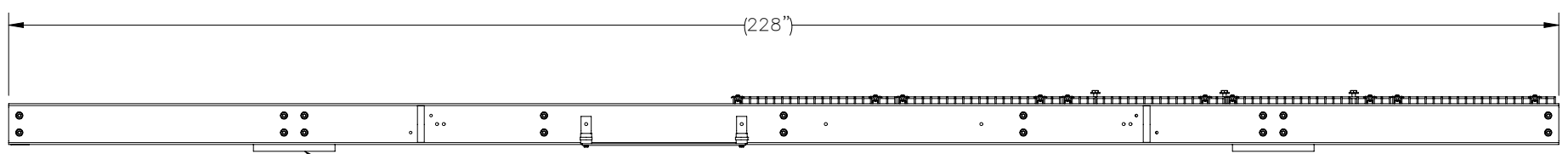
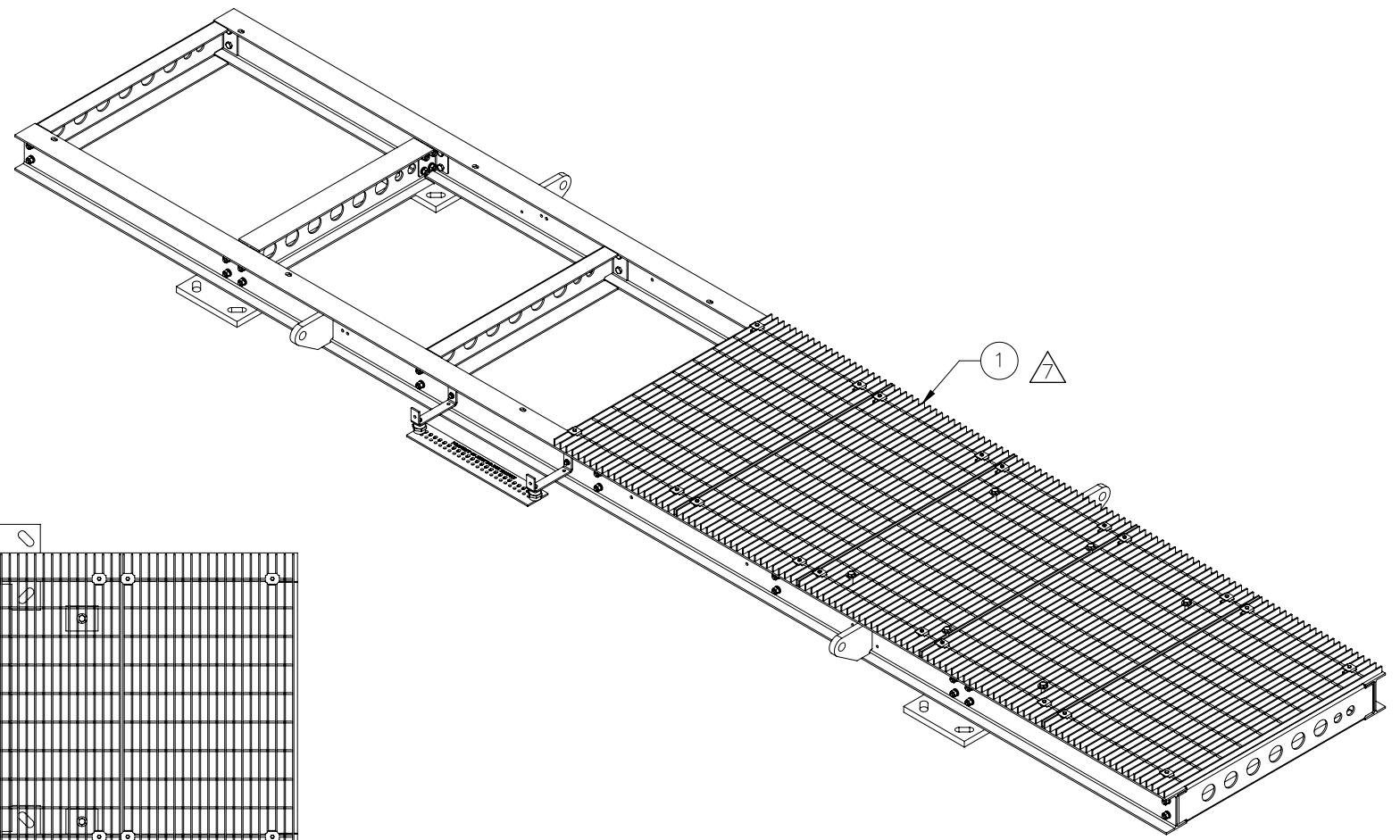
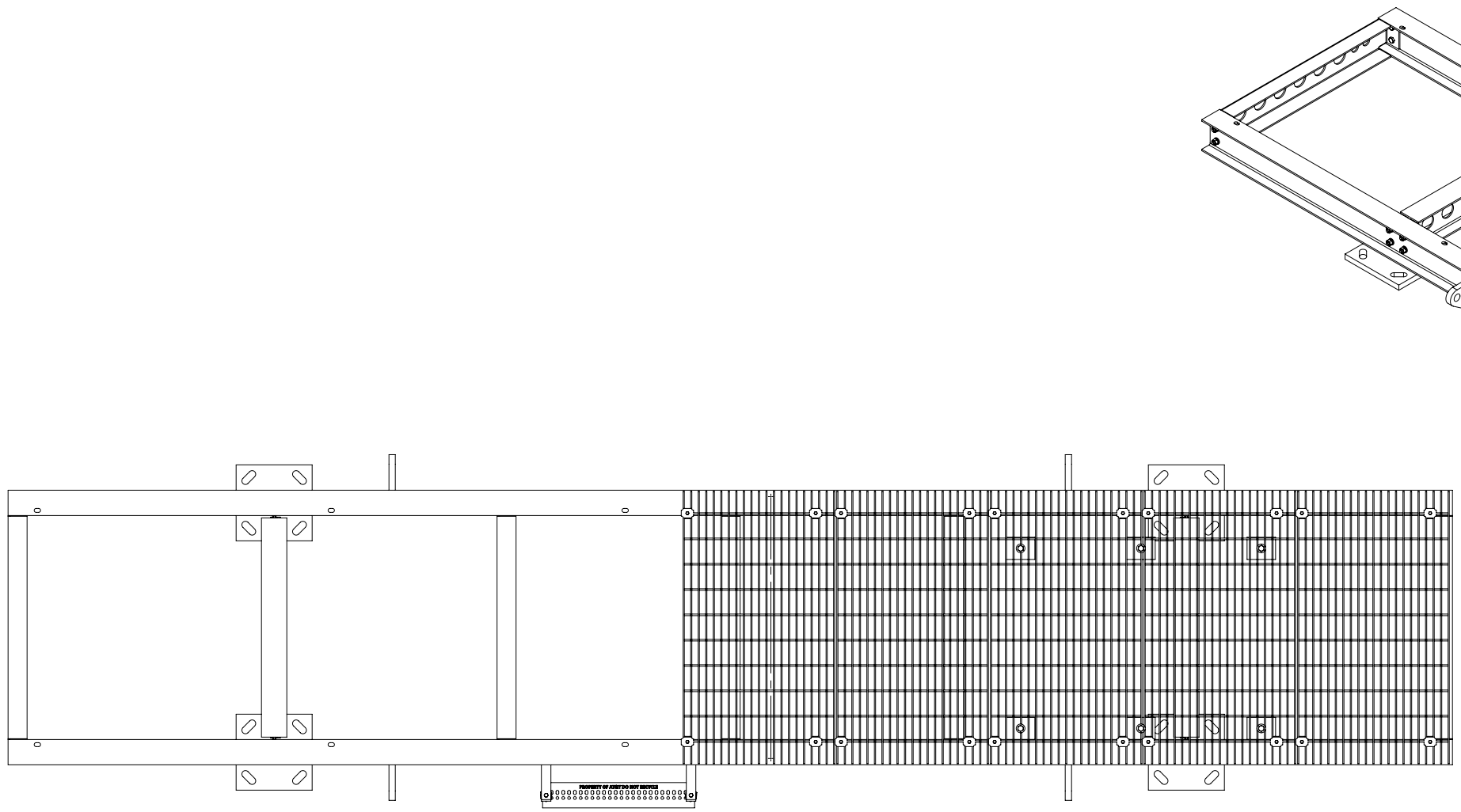


THE INFORMATION CONTAINED IN THIS DRAWING IS THE SOLE PROPERTY OF ELECTRO MECHANICAL INDUSTRIES, INC. ANY REPRODUCTION IN PART OR WHOLE WITHOUT THE WRITTEN PERMISSION OF ELECTRO MECHANICAL IND., IS PROHIBITED.

REVISIONS					
REV.	DCN #	DESCRIPTION	DATE	BY	APPROVED
7	01282	UPDATED WITH LOWER LEVEL CHANGES.	12/15/2023	JTR	JPB



INSTALL THE PLATFORM AT GRADE LEVEL WHEN HELICAL FOUNDATION IS USED

ITEM NO.	QTY.	PART NUMBER	DESCRIPTION	LENGTH	WEIGHT
1	1	1000-0010-0139 20738	4' X 18.6' EQUIPMENT PLATFORM KIT, AT&T NEQ		1155

SURFACE FINISH	UNLESS OTHERWISE SPECIFIED	UNLESS OTHERWISE SPECIFIED DIMENSIONS ARE IN INCHES	APPROVALS	DATE
MATERIAL	SEE PARTS LIST	TOLERANCES .0 ± .06 .00 ± .015 .000 ± .005 FRACTIONS ± 1/16 ANGLES ± .25° HOLES: DRILLED OR PUNCHED ± 1/32 BURNED ± 1/32	DRAWN RLWjr CHECKER P. GUTIERREZ ENGINEER J. BREEN PRODUCTION JKS	2/28/2019 3/5/2019 3/5/2019
THIRD ANGLE PROJECTION				
NEXT ASSY	USED ON			
APPLICATIONS				

		ELECTRO MECHANICAL INDUSTRIES, INC. 11230 NEESEAW DRIVE HOUSTON, TEXAS 77065 1-800-453-0050	
TITLE:		WUC GENERATOR PLATFORM, AT&T NEQ 20738	
SIZE B	DRAWING NO.	W-000-954	REV 7
SCALE: 1:24	WEIGHT: 1155 lbs.	SHEET 1 OF 1	