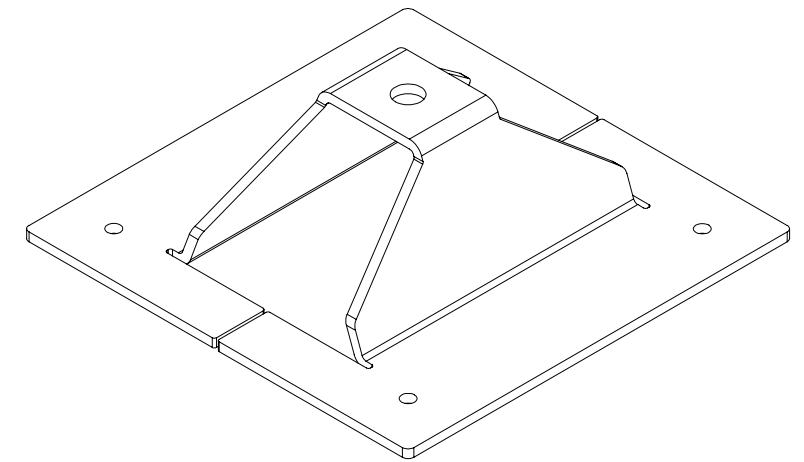
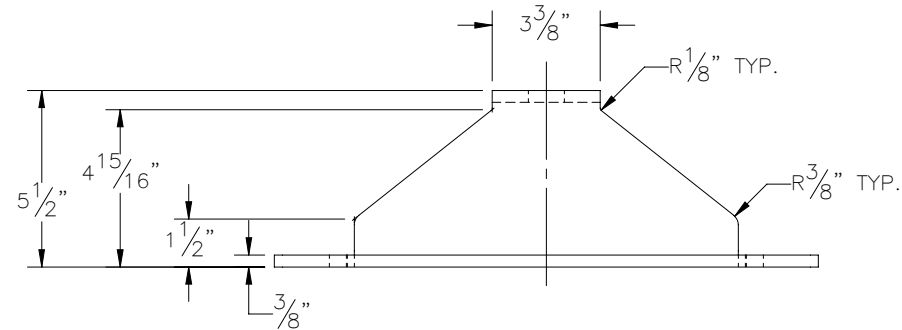
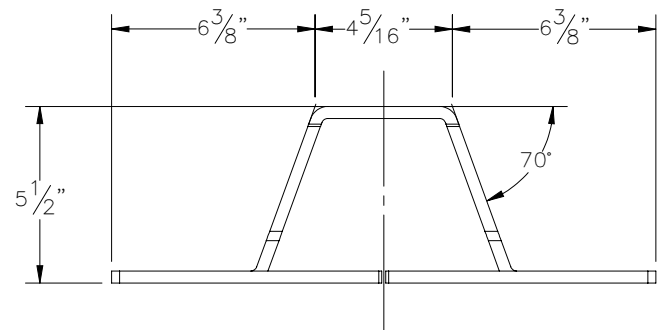
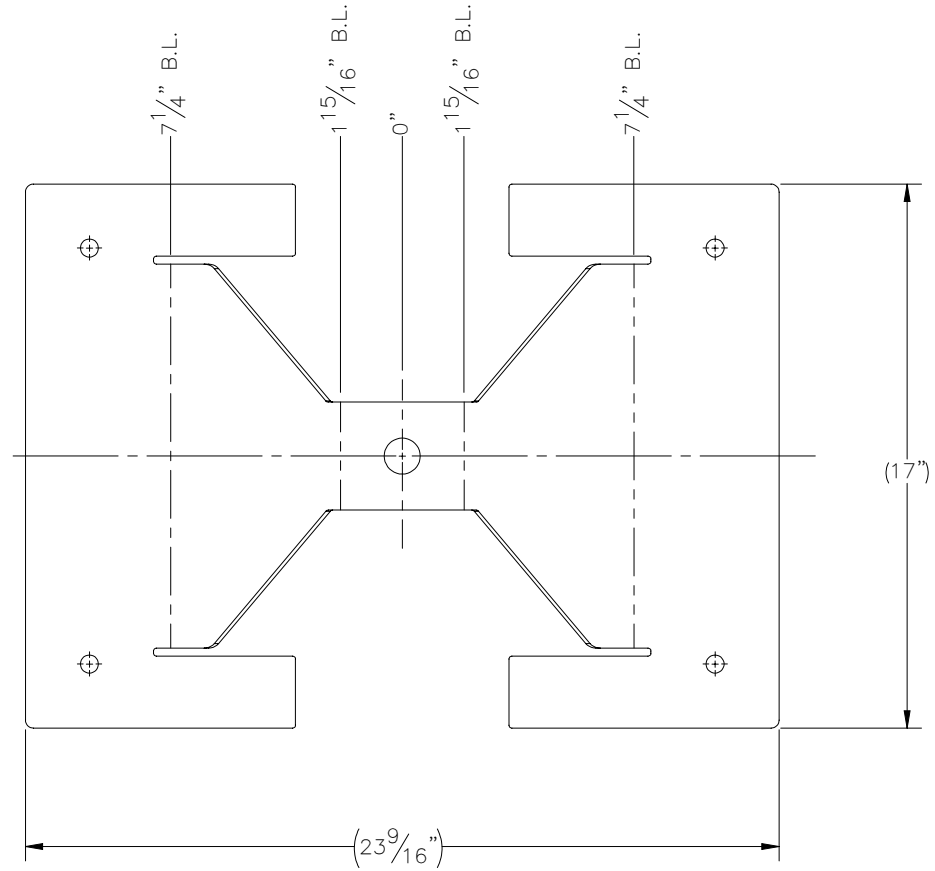
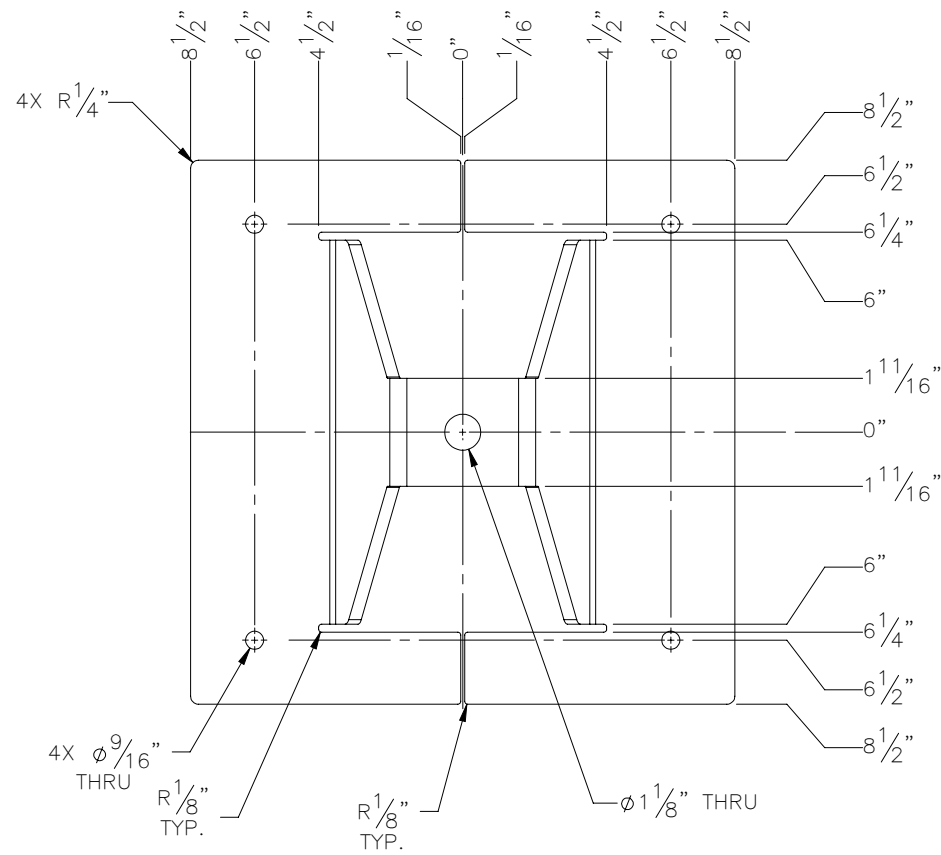


THE INFORMATION CONTAINED IN THIS DRAWING IS THE SOLE PROPERTY OF ELECTRO MECHANICAL INDUSTRIES, INC. ANY REPRODUCTION IN PART OR WHOLE WITHOUT THE WRITTEN PERMISSION OF ELECTRO MECHANICAL IND., IS PROHIBITED.

REVISIONS					
REV.	DCN #	DESCRIPTION	DATE	BY	APPROVED
1	01163	ADDED BEND NOTES AND CHANGED GRADE TO A36	7/7/2022	BLH	JPB



- NOTES:
UNLESS OTHERWISE SPECIFIED.
- FORM FLAT PATTERN WITH P7 TOP TOOL, V80/80 BOTTOM TOOL, AND 0.426 BEND DEDUCTION. CONTACT SUPERVISOR IF TOOLING UNAVAILABLE.
 - GALVANIZE PER ASTM A123.

ITEM NO.	QTY REQD	PART NUMBER	DESCRIPTION	LENGTH	WEIGHT
1	1	PL1-024A	PLATE 3/8" X 17" X 23 9/16" ASTM A36 STL	23 9/16"	31.12

SURFACE FINISH	UNLESS OTHERWISE SPECIFIED	UNLESS OTHERWISE SPECIFIED DIMENSIONS ARE IN INCHES	APPROVALS	DATE
MATERIAL	ASTM A36 STL	TOLERANCES	DRAWN	7/13/2021
THIRD ANGLE PROJECTION		.0 ±.06 .00 ±.015 .000 ±.005	CHECKER	7/13/2021
		FRACTIONS ± 1/16	ENGINEER	5/5/2021
		ANGLES ± .25°	PRODUCTION	7/13/2021
NEXT ASSY	USED ON	HOLES: DRILLED OR PUNCHED ± 1/32	J. LEE	
APPLICATIONS		BURNED ± 1/32		

TITLE:		FORMED FOOT	
SIZE	DRAWING NO.	REV	
B	P-004-838	1	
SCALE:	1:6	WEIGHT:	31.12 lbs.
		SHEET 1 OF 1	

