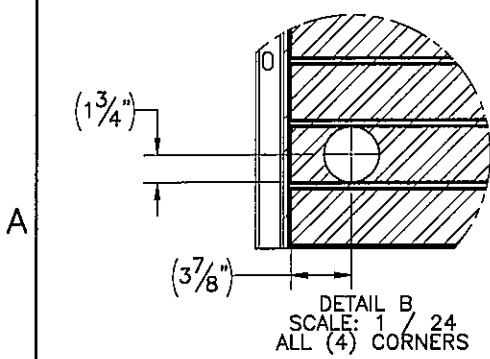
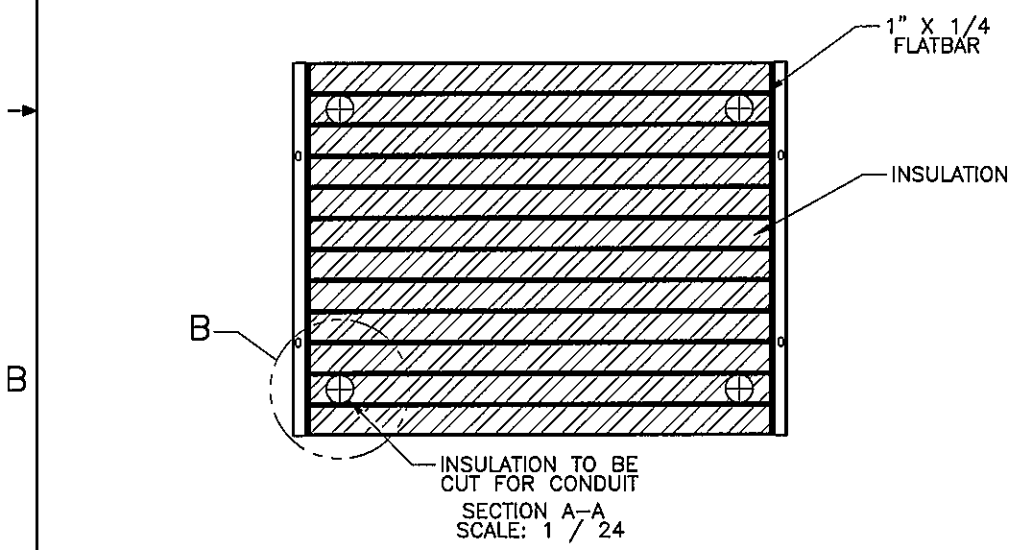
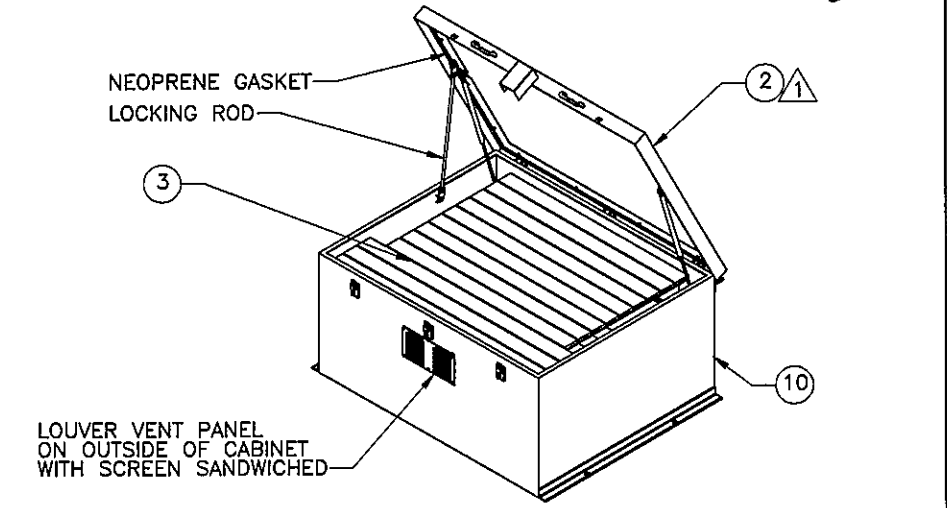
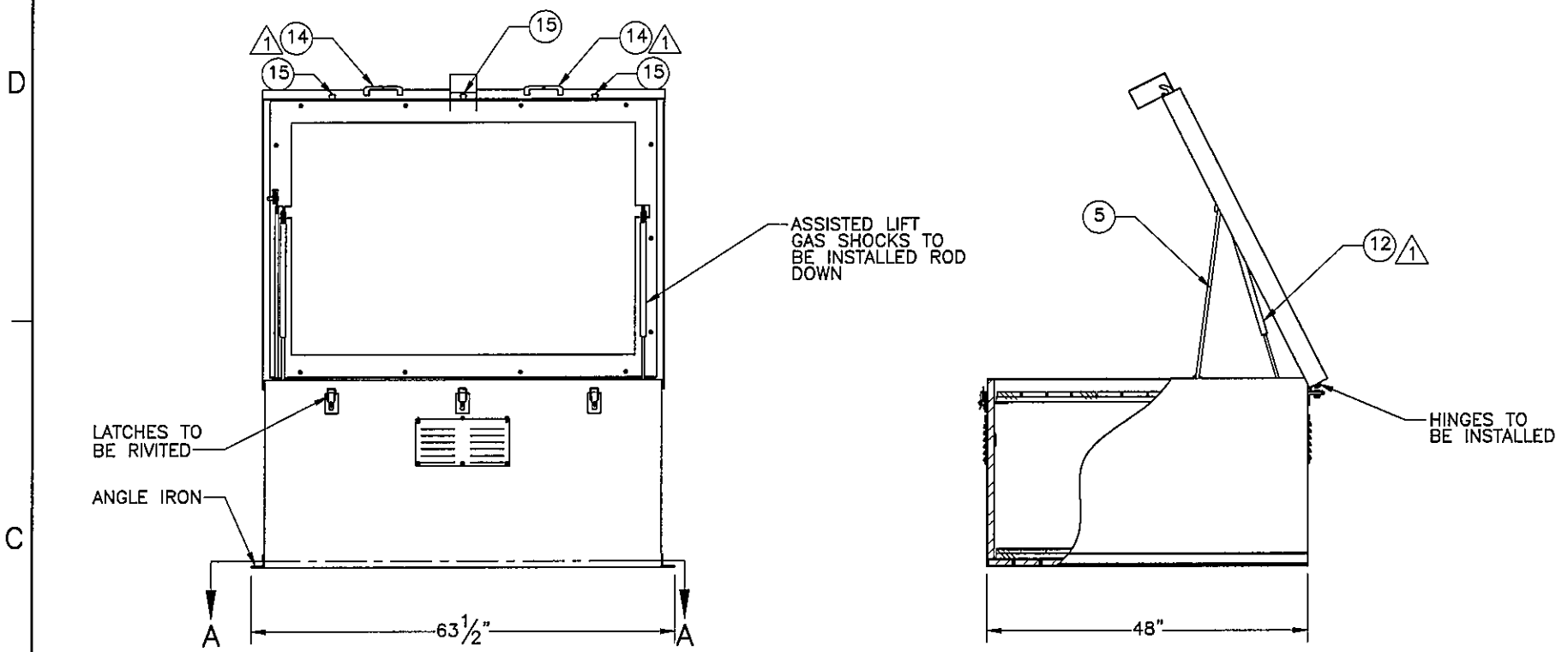


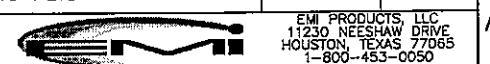
THE INFORMATION CONTAINED IN THIS DRAWING IS THE SOLE PROPERTY OF ELECTRO MECHANICAL INDUSTRIES, INC. ANY REPRODUCTION IN PART OR WHOLE WITHOUT THE WRITTEN PERMISSION OF ELECTRO MECHANICAL IND., IS PROHIBITED.

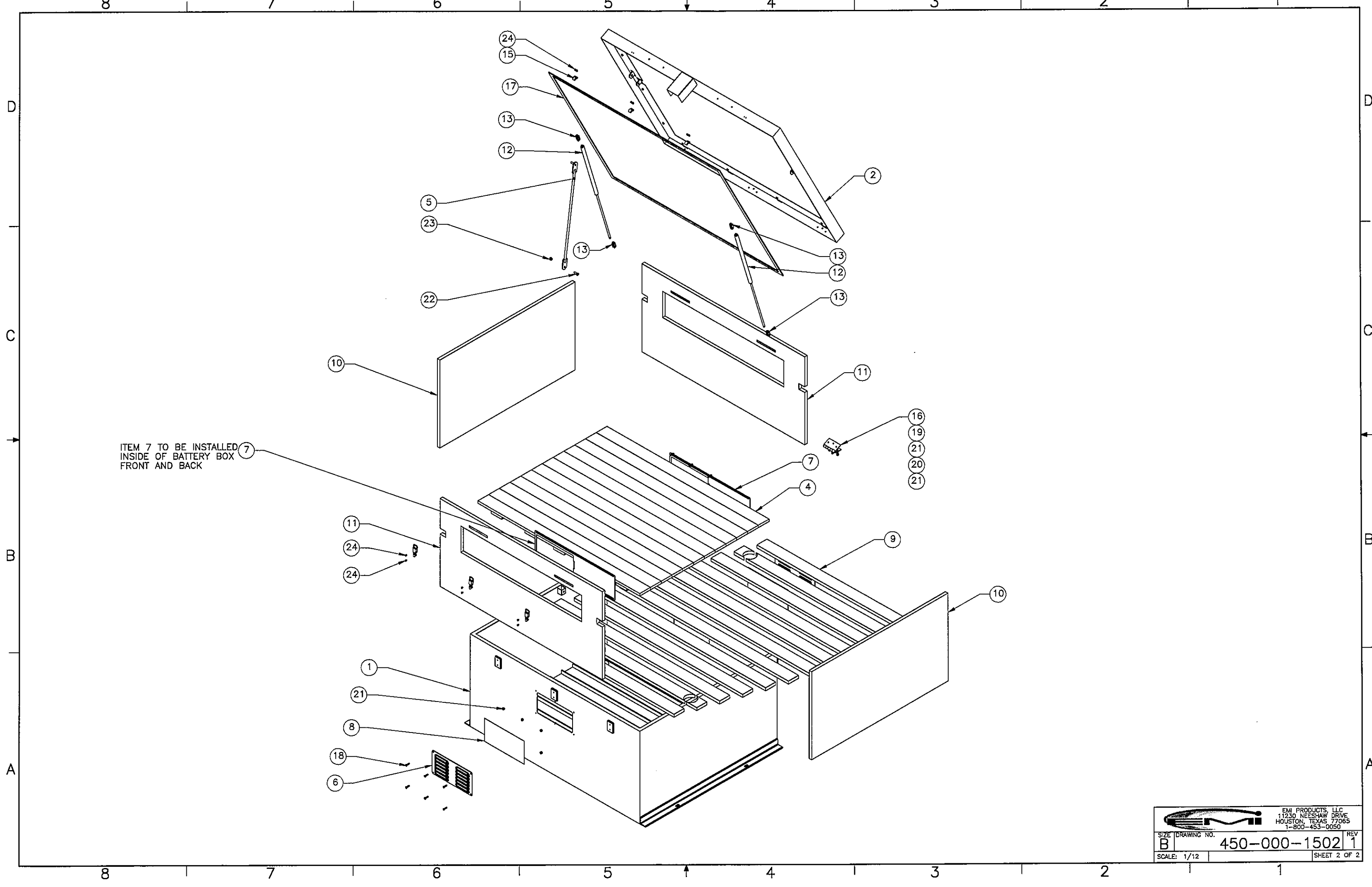
REVISIONS					
REV.	DCN #	DESCRIPTION	DATE	BY	APPROVED
1	DCN00202	UPDATED COMPONENTS	01.30.2017	RLWJr	<i>[Signature]</i>




ITEM NO.	QTY REQD	PART NUMBER	DESCRIPTION	LENGTH	WEIGHT
1	1	450-000-1502-0100	BATTERY BOX EXTERNAL SHELL		426.412
2	1	450-000-1501-0120	BATTERY BOX LID ASS'Y		155.9
3	1	450-000-1501-0130	UPPER FROST COVER		26.9
4	1	450-000-1501-0140	LOWER FROST COVER		31.3
5	1	450-000-1501-0202	HOOD LATCH ROD		2.0
6	2	450-000-1502-0151	LOUVER COVER		3.8
7	2	450-000-1502-0152	LOUVER SLIDE COVER		4.5
8	2	P-001-202	BATTERY BOX SCREEN		0.111
9	12	COMMON	THERMAX FACED INSULATION, 1" X 3-1/2" X 59"		0.2
10	2	COMMON	THERMAX FACED INSULATION, 1" X 26-3/4" X 45-1/2"		1.2
11	2	COMMON	THERMAX FACED INSULATION, 1" X 26-3/4" X 57"		1.1
12	2	(MCM) 9416K23	GAS SPRING STRUT, 175 LBS. EXTENSION FORCE		0.0
13	4	(MCM) 2448K47	GAS STRUT CLEVIS FITTING, M8 X 1.25		0.0
14	2	(MCM) 1656A1	PULL HANDLE		0.07
15	3	(MCM) 1767A410	ZINC PLATED, PAD-LOCKABLE DRAW LATCH		0.00
16	3	(MCM) 15665A627	PIANO HINGE, 4" WD. X 4" LG, SS		0.9
17	1	COMMON	NEOPRENE GASKET, 59.5" X 48" X 1", 3/16" THK		0.0
18	12	COMMON	CR-PHMS 0.25-20x1x1-N		0.003
19	9	COMMON	CARRIAGE BOLT, 25-20 UNC, 1.0 LG, SS		0.002
20	9	COMMON	CARRIAGE BOLT, .25-20 UNC, .75 LG, SS		0.002
21	24	COMMON	NUT, HEX, NY-LOCK, .25-20UNC, ZINC		0.0
22	1	COMMON	BOLT, HX HD, .375-16UNC X 1.0 LG, GR 5, ZINC.		0.01
23	1	COMMON	NUT, NY-LOCK, HEX, .375-16UNC, ZINC PLD, STL		0.003
24	12	(MCM) 97550A310	RIVET, .188 X .315 LG, ZINC PLTD		

SURFACE FINISH: <input checked="" type="checkbox"/> UNLESS OTHERWISE SPECIFIED		UNLESS OTHERWISE SPECIFIED DIMENSIONS ARE IN INCHES		APPROVALS		DATE	
MATERIAL: SEE BOM		TOLERANCES		DRAWN: RLWJr		11.15.13	
THIRD ANGLE PROJECTION		FRACTIONS: ± 1/16		CHECKED: JHALL		11.23.13	
NEXT ASSY: USED ON		ANGLES: ± .25°		ENGINEER/DESIGNER: RLWJr		11.23.13	
APPLICATIONS		HOLES: DRILLED OR PUNCHED +1/32		PRODUCTION: JCRAG		11.23.13	
		BURNED: ± 1/32		TITLE: EMI VENTED BATTERY BOX		REV: 1	
				DRAWING NO. 450-000-1502		SCALE: 1/24 WEIGHT: 700 lbs. SHEET 1 OF 2	





ITEM 7 TO BE INSTALLED  
INSIDE OF BATTERY BOX  
FRONT AND BACK

		EMI PRODUCTS, LLC 11230 NEESHAW DRIVE HOUSTON, TEXAS 77065 1-800-453-0050	
		SIZE B SCALE: 1/12	DRAWING NO. 450-000-1502