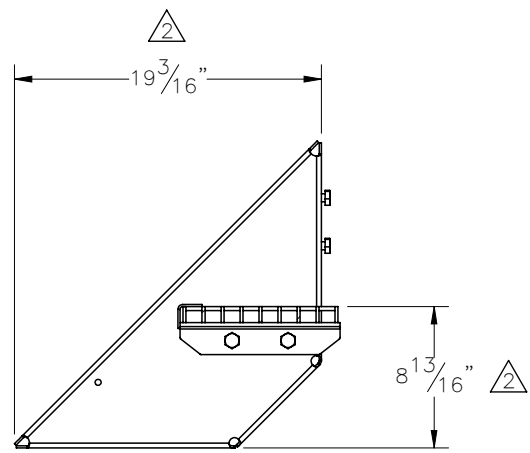
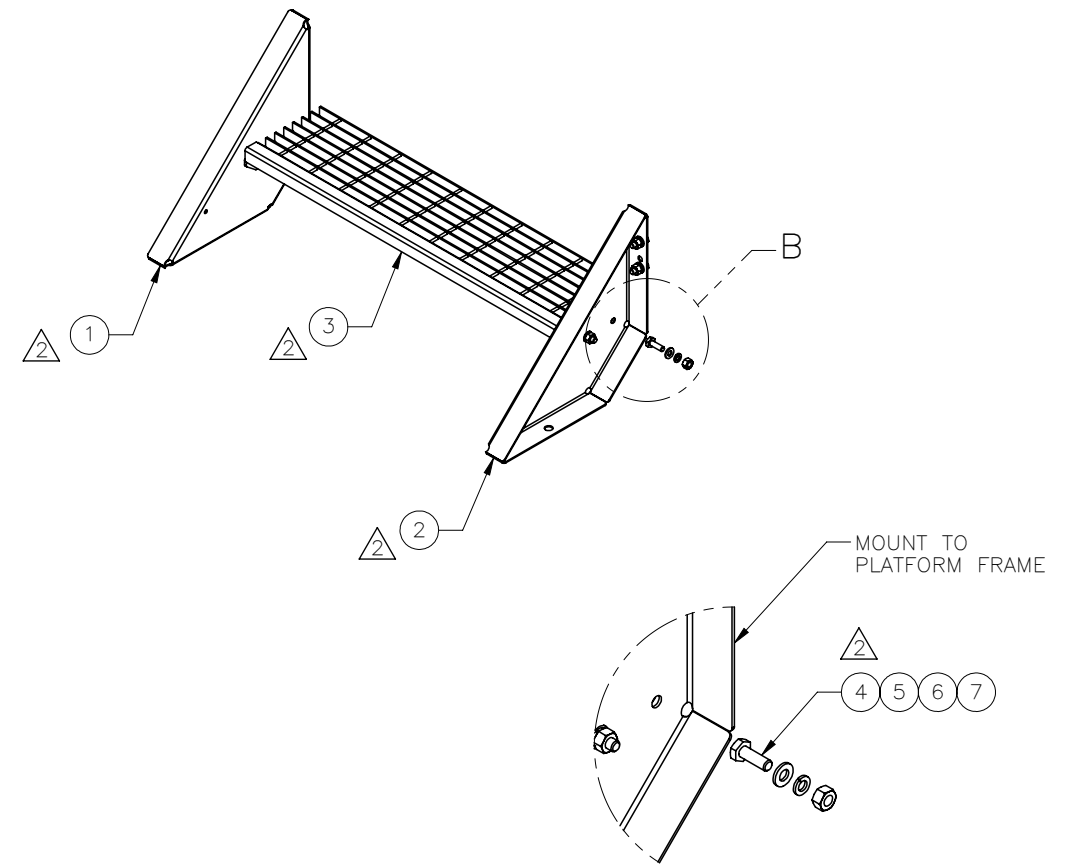
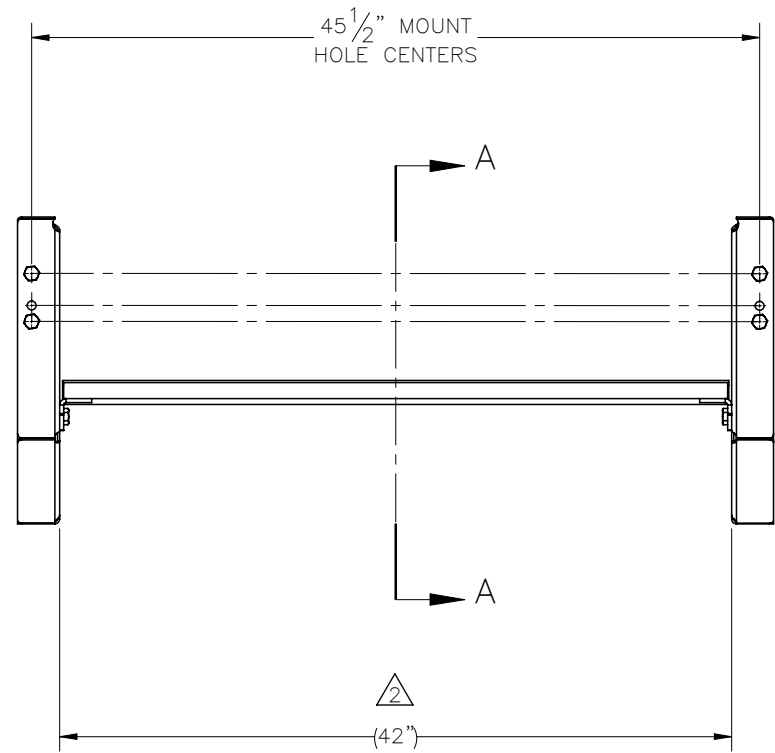


THE INFORMATION CONTAINED IN THIS DRAWING IS THE SOLE PROPERTY OF ELECTRO MECHANICAL INDUSTRIES, INC. ANY REPRODUCTION IN PART OR WHOLE WITHOUT THE WRITTEN PERMISSION OF ELECTRO MECHANICAL IND., IS PROHIBITED.

REVISIONS					
REV.	DCN #	DESCRIPTION	DATE	BY	APPROVED
2	01092	BOLT 002-0BG-0026 TO 002-0BG-0010, ADDED STAIR WIDTH REF, OTHER DIM UPDATED DUE TO LOWER LEVEL CHANGES.	03/23/2022	JTR	JPB


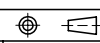


SECTION A-A



DETAIL B

ITEM NO.	Default QTY REQD	PART NUMBER	DESCRIPTION	LENGTH	WEIGHT
1	1	P-004-366	LEFT STRINGER, FORMED, 1 STEP	26.7467	12.2
2	1	P-004-367	RIGHT STRINGER, FORMED, 1 STEP	26.72	12.2
3	1	W-001-864	42" WD, STAIR TREAD WELDMENT		29.82
4	8	002-0BG-0010	HHB, .500-13 X 1.50 LG., PT X 1.00, A325, HDG	1.50	0.14
5	8	002-0FW-G002	FW, .50, F436, HDG		0.02
6	8	002-0LW-G002	WASHER, SPLIT LOCK, .500", GALV		0.01
7	8	002-0NG-0010	NUT, HEX, .500-13UNC, GR 2H, GALV		0.06

SURFACE FINISH <input checked="" type="checkbox"/> UNLESS OTHERWISE SPECIFIED		UNLESS OTHERWISE SPECIFIED DIMENSIONS ARE IN INCHES		APPROVALS		DATE		 ELECTRO MECHANICAL INDUSTRIES, INC. 11230 NEESESHAW DRIVE HOUSTON, TEXAS 77065 1-800-453-0050	
MATERIAL SEE PARTS LIST		TOLERANCES		DRAWN C. SANCHEZ		10/20/2021			
THIRD ANGLE PROJECTION 		.0 ±.06 .00 ±.015 .000 ±.005		CHECKER J. BREEN		10/20/2021		TITLE: 1 TREAD STAIR ASSY (42" WIDE)	
NEXT ASSY USED ON		FRACTIONS ± 1/16 ANGLES ± .25°		ENGINEER J. BREEN		10/20/2021			
APPLICATIONS		HOLES: DRILLED OR PUNCHED ± 1/32 BURNED ± 1/32		PRODUCTION JKS		10/20/2021		SIZE B DRAWING NO. 450-000-0103 REV 2 SCALE: 1:12 WEIGHT: 56.1 lbs. SHEET 1 OF 1	