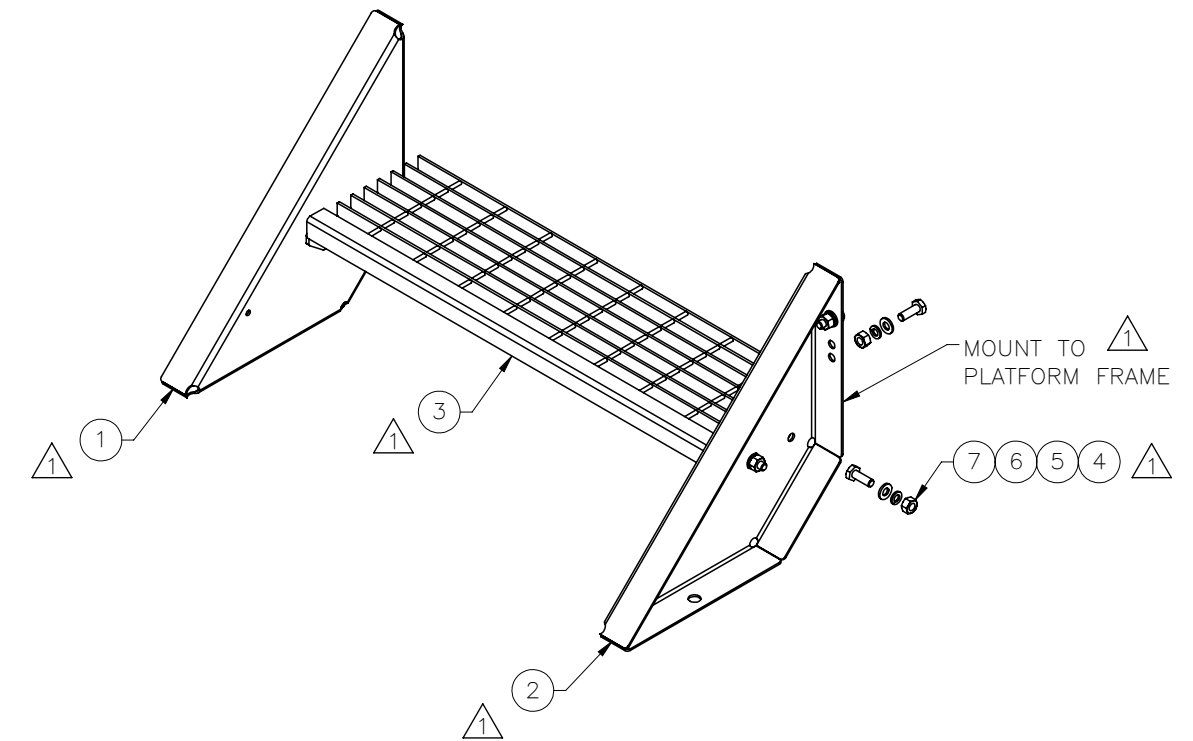
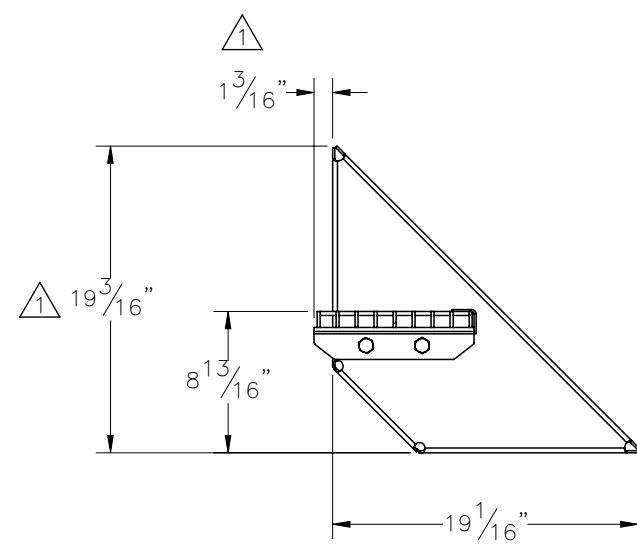
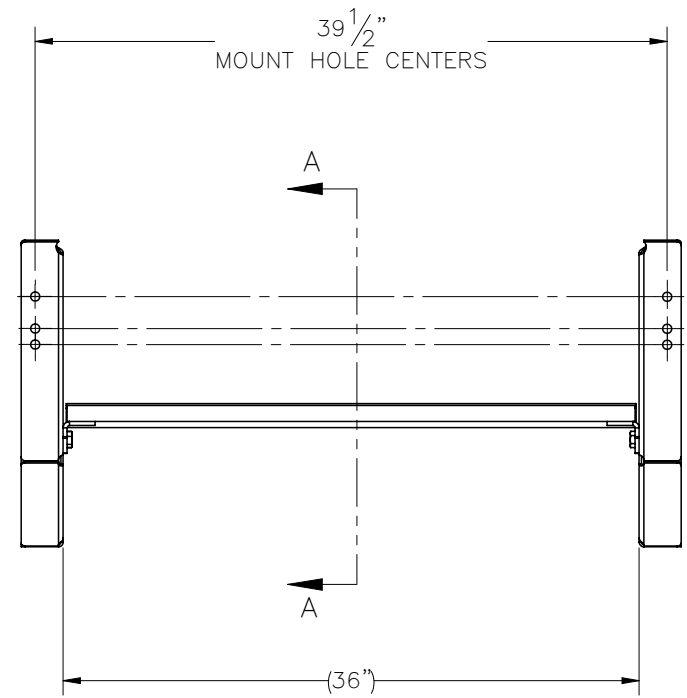

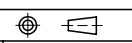


THE INFORMATION CONTAINED IN THIS DRAWING IS THE SOLE PROPERTY OF ELECTRO MECHANICAL INDUSTRIES, INC. ANY REPRODUCTION IN PART OR WHOLE WITHOUT THE WRITTEN PERMISSION OF ELECTRO MECHANICAL IND., IS PROHIBITED.

REVISIONS					
REV.	DCN #	DESCRIPTION	DATE	BY	APPROVED
1	01092	002-OBG-0026 TO 002-OBG-0010, ADDITIONAL DIM'S ADDED, OTHER PARTS UPDATED DUE TO LOWER LEVEL CHANGES.	11-16-21	JTR	JPB



ITEM NO.	QTY REQD	PART NUMBER	DESCRIPTION	LENGTH	WEIGHT
1	1	P-004-366	LEFT STRINGER, FORMED, 1 STEP	26.7467	12.16
2	1	P-004-367	RIGHT STRINGER, FORMED, 1 STEP	26.7467	12.16
3	1	W-001-873	36" WD STAIR TREAD WELDMENT	36	26.16
4	8	002-OBG-0010	HHB, .500-13 X 1.50 LG., PT X 1.00, A325, HDG	1.50	0.14
5	8	002-OFW-G002	FW, .50, F436, HDG		0.02
6	8	002-OLW-G002	WASHER, SPLIT LOCK, .500", GALV		0.01
7	8	002-ONG-0010	NUT, HEX, .500-13UNC, GR 2H, GALV		0.06

SURFACE FINISH <input checked="" type="checkbox"/> UNLESS OTHERWISE SPECIFIED		UNLESS OTHERWISE SPECIFIED DIMENSIONS ARE IN INCHES		APPROVALS		DATE		 ELECTRO MECHANICAL INDUSTRIES, INC. 11230 NEESESHAW DRIVE HOUSTON, TEXAS 77065 1-800-453-0050	
MATERIAL SEE PARTS LIST		TOLERANCES		DRAWN P. GUTIERREZ		10/27/2020			
THIRD ANGLE PROJECTION 		.0 ±.06 .00 ±.015 .000 ±.005		CHECKER J. BREEN		10/27/2020		TITLE: 1 TREAD STAIR ASS'Y (36" WIDE)	
NEXT ASSY USED ON		FRACTIONS ± 1/16 ANGLES ± .25°		ENGINEER J. BREEN		10/27/2020			
APPLICATIONS		HOLES: DRILLED OR PUNCHED +1/32 BURNED ±1/32		PRODUCTION JKS		10/27/2020		SIZE B DRAWING NO. 450-000-0102 REV 1 SCALE: 1:12 WEIGHT: 52 lbs. SHEET 1 OF 1	