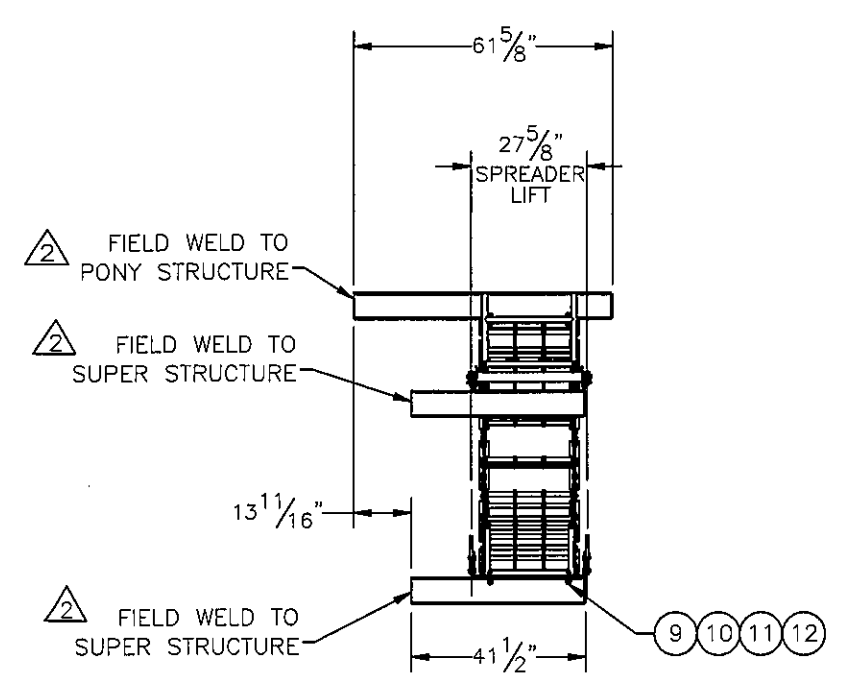
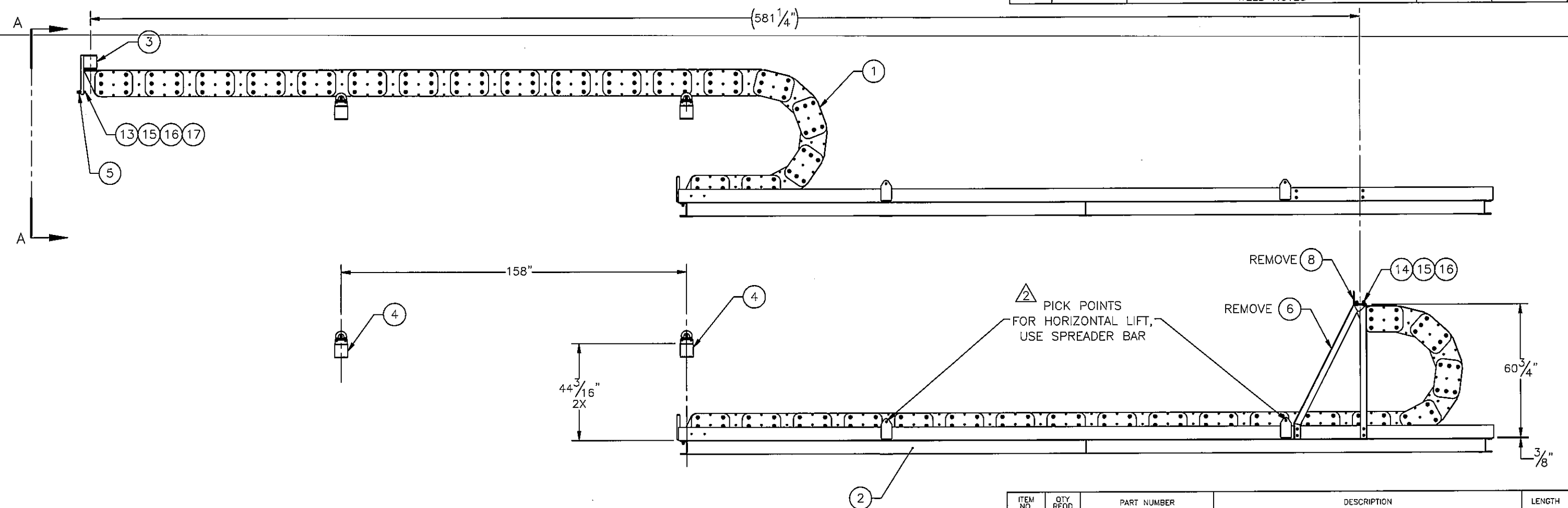


THE INFORMATION CONTAINED IN THIS DRAWING IS THE SOLE PROPERTY OF ELECTRO MECHANICAL INDUSTRIES, INC. ANY REPRODUCTION IN PART OR WHOLE WITHOUT THE WRITTEN PERMISSION OF ELECTRO MECHANICAL IND., IS PROHIBITED.

REVISIONS					
REV.	DCN #	DESCRIPTION	DATE	BY	APPROVED
2	DCN00984	ADDED PICK POINTS FOR LIFT NOTE & FIELD WELD NOTES	12.15.20	CS	JPB



SECTION A-A

ITEM NO.	QTY REQD	PART NUMBER	DESCRIPTION	LENGTH	WEIGHT
1	1	1013-0010-0034	DRAG CHAIN ASSEMBLY		1517.5
2	1	W-001-802	DRAG CHAIN SUPPORT FRAME		1853.5
3	1	W-001-803	TOWING ARM		142.9
4	2	A-000-369	SUPPORT ROLLER ASSEMBLY		94.1
5	1	P-004-499	CROSS BAR PIPE		4.1
6	1	W-002-069	SHIPPING SUPPORT FRAME WELDMENT -- A		53.3
7	1	W-002-070	SHIPPING SUPPORT FRAME WELDMENT -- B		53.3
8	1	P-004-523	SHIPPING SUPPORT ANGLE		40.2
9	8	002-OBS-0505	BOLT, HEX HD, .750-10UNC X 2.5 LG, 18-8 SST		0.46
10	8	002-ONS-0032	NUT, HEX .750-10UNC, 18-8 SST		0.12
11	8	002-OLW-G003	WASHER, SPLIT LOCK, .750", GALV.		0.04
12	8	002-OFW-S020	WASHER, FLAT, .75 INCH, SST		0.03
13	2	002-OBG-0224	BOLT, HX HD .500-13 X 3.5 LG, ASTM A325, GALV.		0.229
14	12	002-OBG-0010	BOLT, HX HD, .500-13UNC X 1.50 LG, ASTM A325, GALV		0.14
15	14	002-ONG-0005	NUT, HEX, ANCO LOCKNUT, .500-13UNC, GR 2H, GALV		0.1
16	14	002-OLW-G002	WASHER, SPLIT LOCK, .500", GALV		0.01
17	2	002-OFW-G002	WASHER, FLAT, .500", F436, GALV		0.02

- NOTES:
- TOTAL LOAD FOR LIFTING, INCLUDING CABLE AND HOSES: 7,100 LBS
 - REMOVE SHIPPING A FRAME COMPONENTS 6,7, & 8 BEFORE OPERATING

SURFACE FINISH <input checked="" type="checkbox"/> UNLESS OTHERWISE SPECIFIED		UNLESS OTHERWISE SPECIFIED DIMENSIONS ARE IN INCHES		APPROVALS		DATE	
MATERIAL SEE PARTS LIST		TOLERANCES		DRAWN C.SANCHEZ		9.28.20	
THIRD ANGLE PROJECTION		0 ± .06 .000 ± .015 ± .005		CHECKED J. CRITELLI		9.29.20	
NEXT ASSY		FRACTIONS ± 1/16		ENGINEER/DESIGNER J. BREEN		9.29.20	
USED ON		ANGLES ± .25°		PRODUCTION J.K.S.		9.29.20	
APPLICATIONS		HOLES: DRILLED OR PUNCHED +1/32		SCALE: 1:4		WEIGHT: 3713.8 lbs.	
		BURNED ± 1/32		DRAWING NO. 1013-0000-0027		REV 2	

ELECTRO MECHANICAL INDUSTRIES, INC.
11230 NEESHAW DRIVE
HOUSTON, TEXAS 77065
1-800-453-0050

DRAG CHAIN & SUPPORT FRAME KIT

SHEET 1 OF 2

