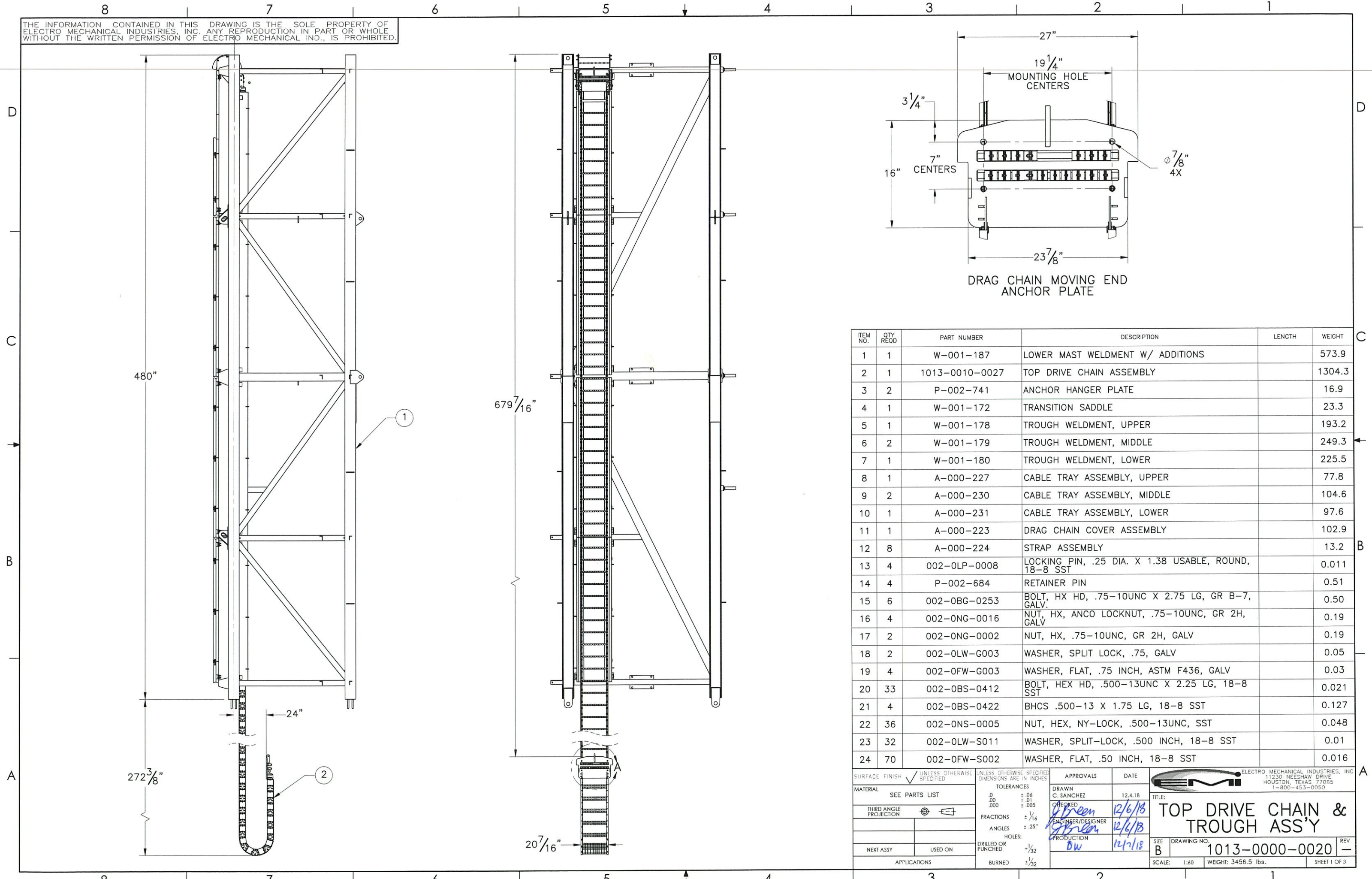


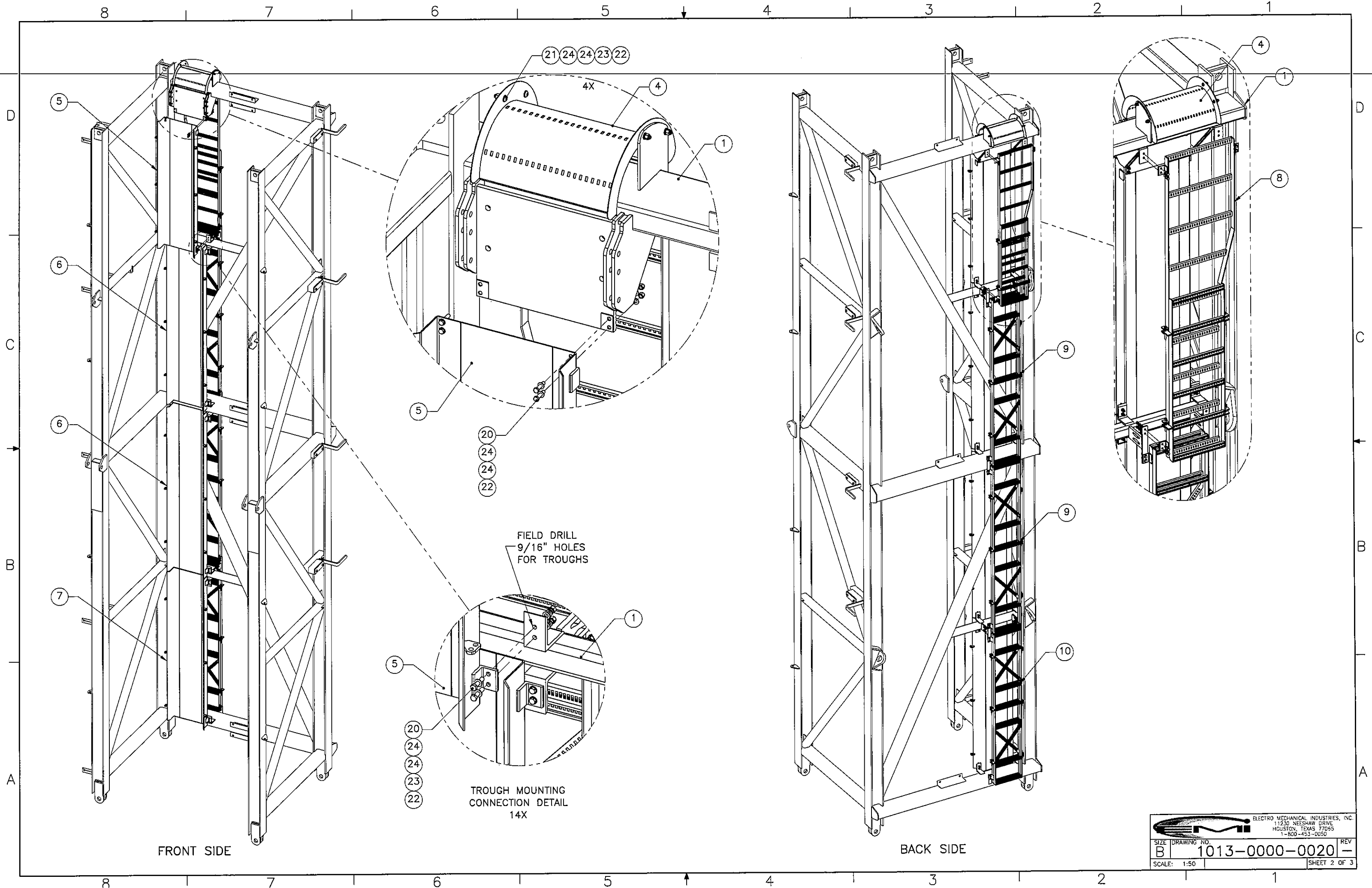



THE INFORMATION CONTAINED IN THIS DRAWING IS THE SOLE PROPERTY OF ELECTRO MECHANICAL INDUSTRIES, INC. ANY REPRODUCTION IN PART OR WHOLE WITHOUT THE WRITTEN PERMISSION OF ELECTRO MECHANICAL IND., IS PROHIBITED.



ITEM NO.	QTY REQD	PART NUMBER	DESCRIPTION	LENGTH	WEIGHT
1	1	W-001-187	LOWER MAST WELDMENT W/ ADDITIONS		573.9
2	1	1013-0010-0027	TOP DRIVE CHAIN ASSEMBLY		1304.3
3	2	P-002-741	ANCHOR HANGER PLATE		16.9
4	1	W-001-172	TRANSITION SADDLE		23.3
5	1	W-001-178	TROUGH WELDMENT, UPPER		193.2
6	2	W-001-179	TROUGH WELDMENT, MIDDLE		249.3
7	1	W-001-180	TROUGH WELDMENT, LOWER		225.5
8	1	A-000-227	CABLE TRAY ASSEMBLY, UPPER		77.8
9	2	A-000-230	CABLE TRAY ASSEMBLY, MIDDLE		104.6
10	1	A-000-231	CABLE TRAY ASSEMBLY, LOWER		97.6
11	1	A-000-223	DRAG CHAIN COVER ASSEMBLY		102.9
12	8	A-000-224	STRAP ASSEMBLY		13.2
13	4	002-OLP-0008	LOCKING PIN, .25 DIA. X 1.38 USABLE, ROUND, 18-8 SST		0.011
14	4	P-002-684	RETAINER PIN		0.51
15	6	002-OBG-0253	BOLT, HX HD, .75-10UNC X 2.75 LG, GR B-7, GALV.		0.50
16	4	002-ONG-0016	NUT, HX, ANCO LOCKNUT, .75-10UNC, GR 2H, GALV		0.19
17	2	002-ONG-0002	NUT, HX, .75-10UNC, GR 2H, GALV		0.19
18	2	002-OLW-G003	WASHER, SPLIT LOCK, .75, GALV		0.05
19	4	002-OFW-G003	WASHER, FLAT, .75 INCH, ASTM F436, GALV		0.03
20	33	002-OBS-0412	BOLT, HEX HD, .500-13UNC X 2.25 LG, 18-8 SST		0.021
21	4	002-OBS-0422	BHCS .500-13 X 1.75 LG, 18-8 SST		0.127
22	36	002-ONS-0005	NUT, HEX, NY-LOCK, .500-13UNC, SST		0.048
23	32	002-OLW-S011	WASHER, SPLIT-LOCK, .500 INCH, 18-8 SST		0.01
24	70	002-OFW-S002	WASHER, FLAT, .50 INCH, 18-8 SST		0.016

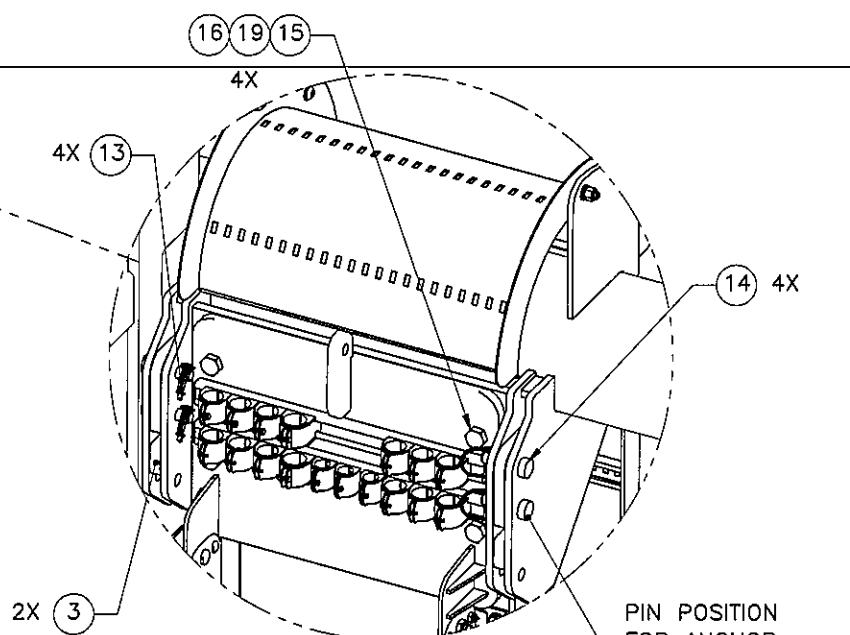
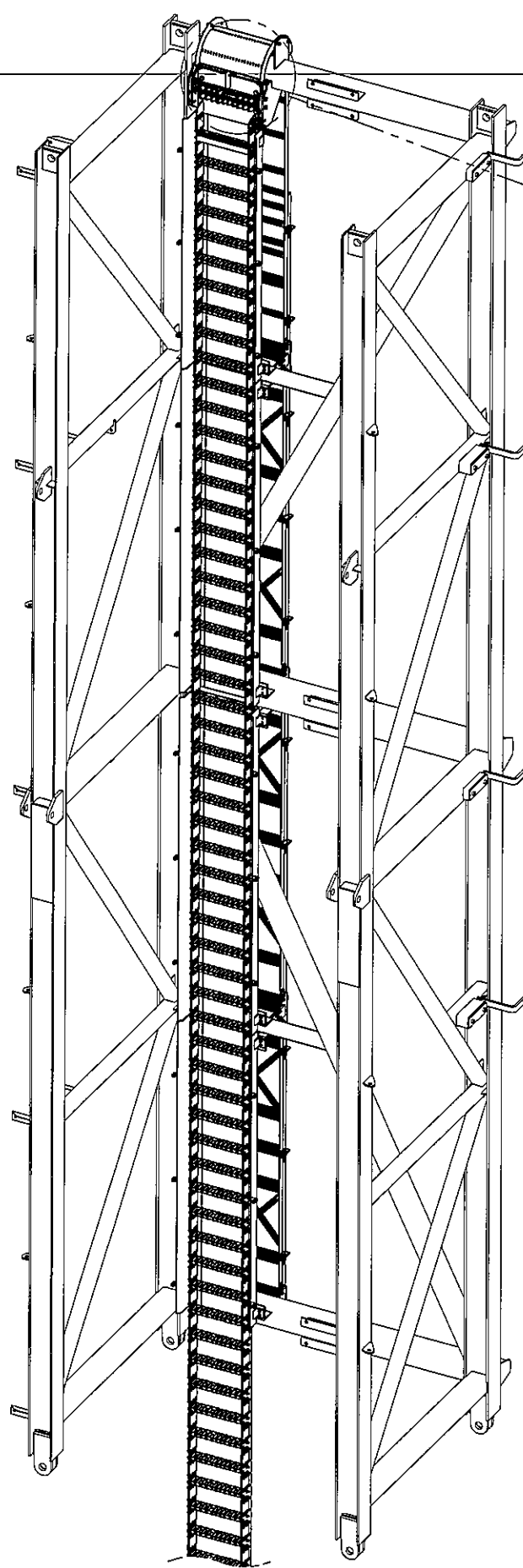
SURFACE FINISH <input checked="" type="checkbox"/> UNLESS OTHERWISE SPECIFIED		UNLESS OTHERWISE SPECIFIED DIMENSIONS ARE IN INCHES		APPROVALS		DATE		 ELECTRO MECHANICAL INDUSTRIES, INC. 11230 NEECHAW DRIVE HOUSTON, TEXAS 77065 1-800-453-0050	
MATERIAL SEE PARTS LIST		TOLERANCES		DRAWN C. SANCHEZ		12.4.18		TITLE: TOP DRIVE CHAIN & TROUGH ASS'Y	
THIRD ANGLE PROJECTION 		.0 ± .06 .00 ± .01 .000 ± .005		CHECKED <i>J. Green</i>		12/6/18		SIZE B	
NEXT ASSY		FRACTIONS ± 1/16		DESIGNER/DESIGNER <i>J. Green</i>		12/6/18		DRAWING NO. 1013-0000-0020	
APPLICATIONS		ANGLES ± .25°		PRODUCTION <i>DW</i>		12/7/18		REV -	
		HOLES: DRILLED OR PUNCHED +1/32		SCALE: 1:60		WEIGHT: 3456.5 lbs.		SHEET 1 OF 3	
		BURNED ± 1/32							



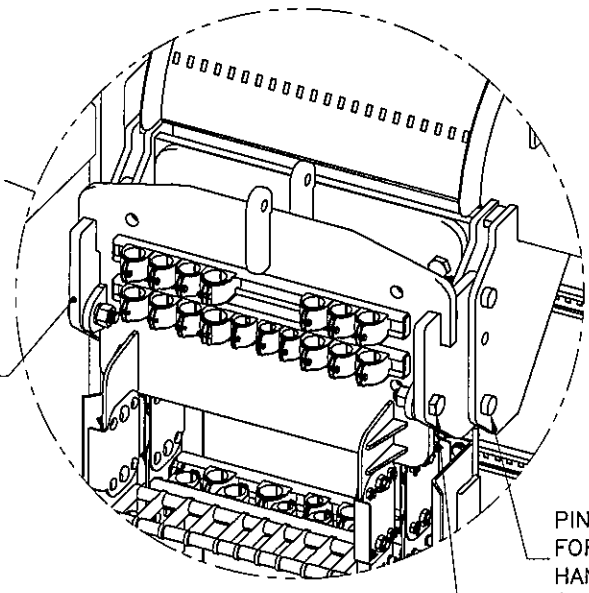
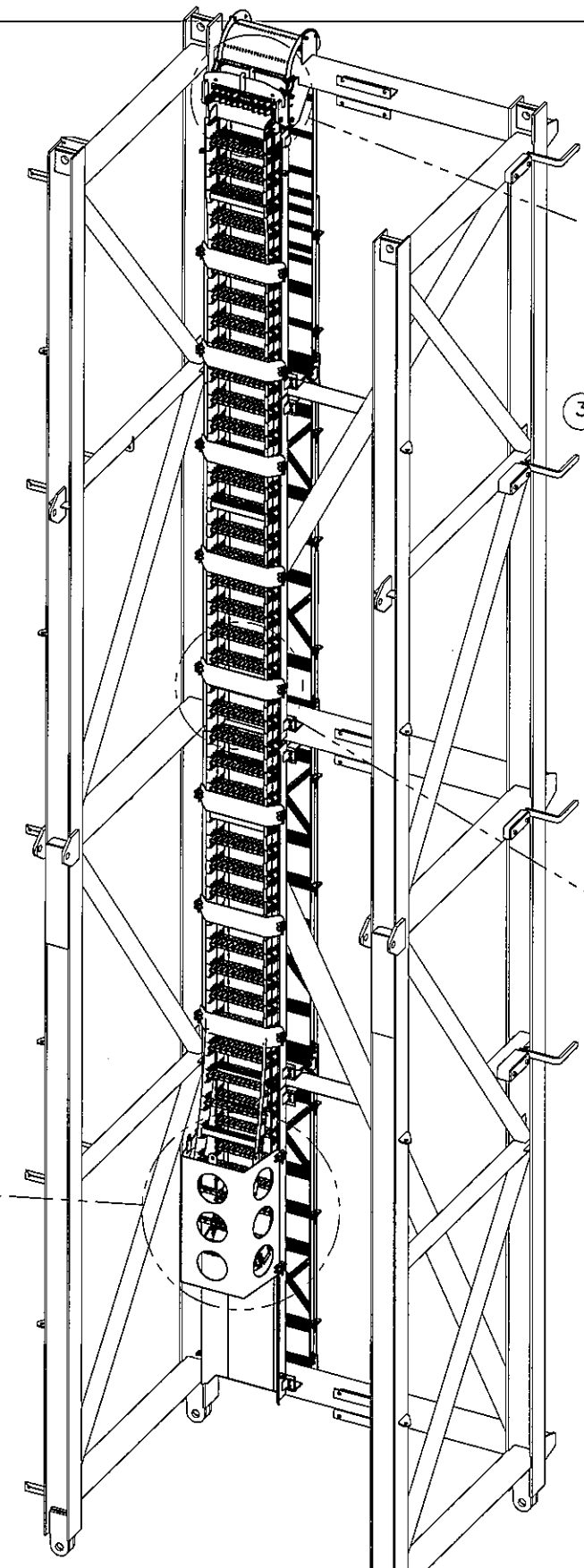
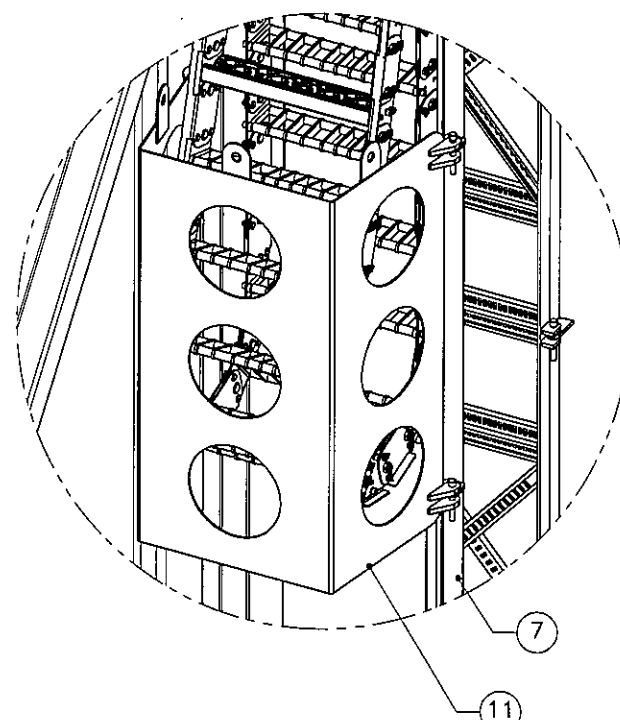
		ELECTRO MECHANICAL INDUSTRIES, INC. 11230 NEESHAW DRIVE HOUSTON, TEXAS 77065 1-800-453-0050	
SIZE	DRAWING NO.	REV	
B	1013-0000-0020	-	
SCALE: 1:50	SHEET 2 OF 3		

8 7 6 5 4 3 2 1

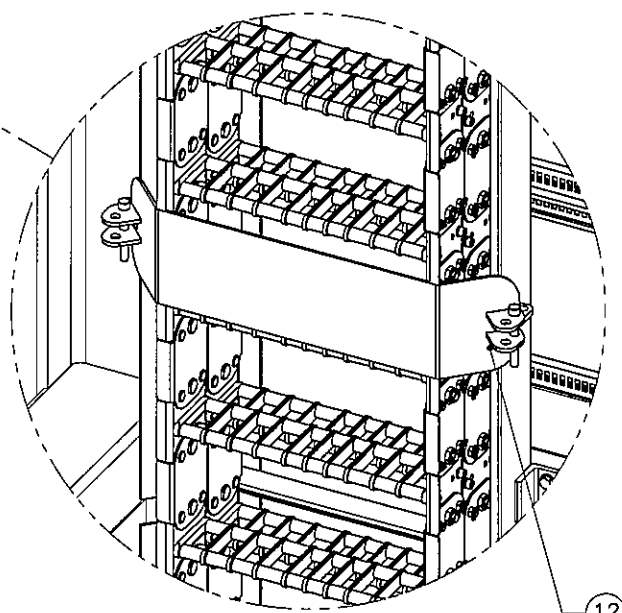
D
C
B
A



FIXED END ANCHOR - MOUNTED
PIN POSITION FOR ANCHOR HANGER RETRACTED



MOVING END ANCHOR - MOUNTED FOR SHIPPING
PIN POSITION FOR ANCHOR HANGER EXTENDED (SHIPPING)



OPERATING POSITION

SHIPPING POSITION

EMI ELECTRO MECHANICAL INDUSTRIES, INC.
 11230 NEESHAU DRIVE
 HOUSTON, TEXAS 77065
 1-800-453-0050

SIZE	DRAWING NO.	REV
B	1013-0000-0020	-
SCALE: 1:50	SHEET 3 OF 3	

8 7 6 5 4 3 2 1