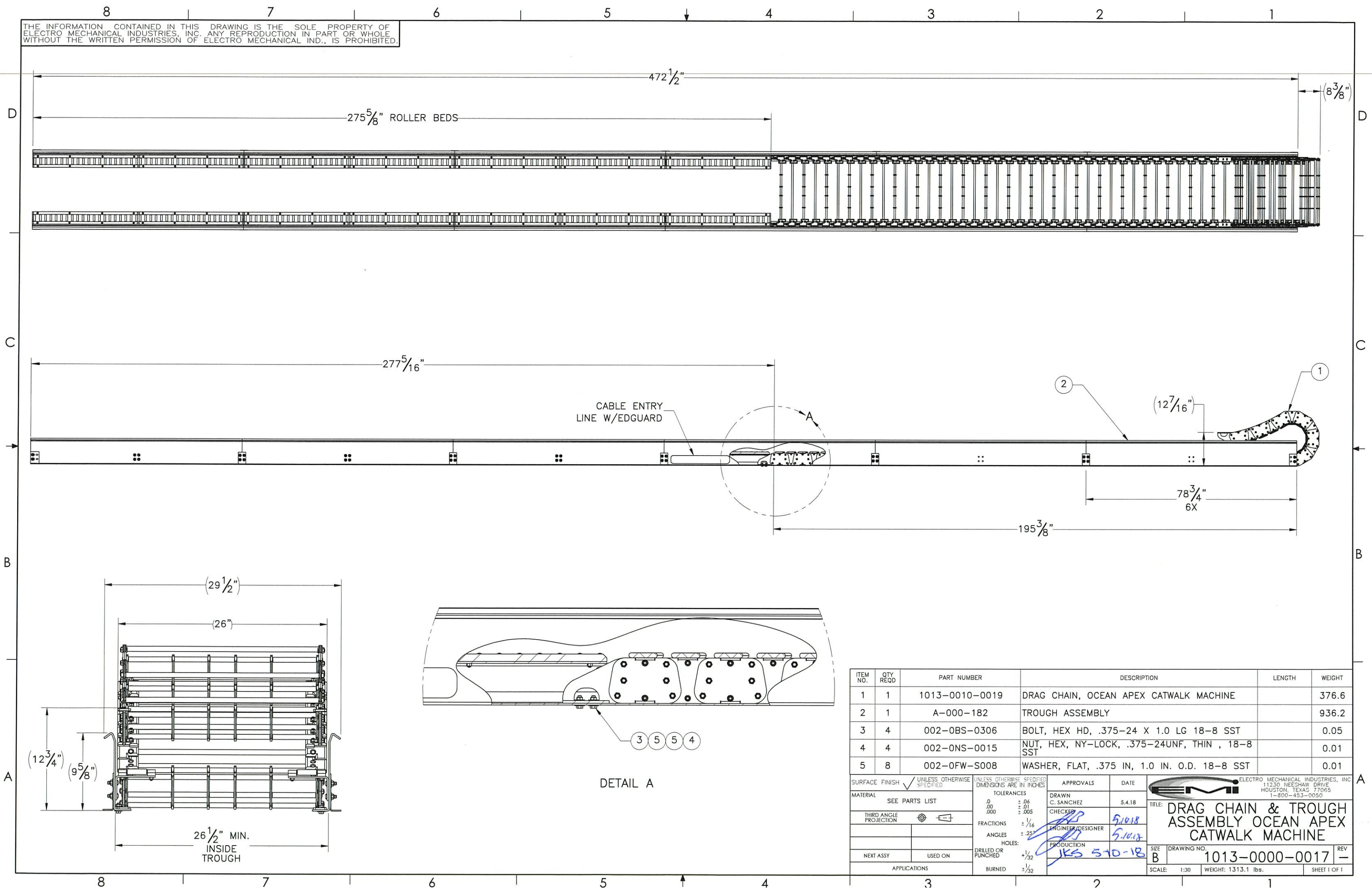

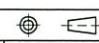


THE INFORMATION CONTAINED IN THIS DRAWING IS THE SOLE PROPERTY OF ELECTRO MECHANICAL INDUSTRIES, INC. ANY REPRODUCTION IN PART OR WHOLE WITHOUT THE WRITTEN PERMISSION OF ELECTRO MECHANICAL IND., IS PROHIBITED.



| ITEM NO. | QTY REQD | PART NUMBER | DESCRIPTION | LENGTH | WEIGHT |
|----------|----------|----------------|---|--------|--------|
| 1 | 1 | 1013-0010-0019 | DRAG CHAIN, OCEAN APEX CATWALK MACHINE | | 376.6 |
| 2 | 1 | A-000-182 | TROUGH ASSEMBLY | | 936.2 |
| 3 | 4 | 002-OBS-0306 | BOLT, HEX HD, .375-24 X 1.0 LG 18-8 SST | | 0.05 |
| 4 | 4 | 002-ONS-0015 | NUT, HEX, NY-LOCK, .375-24UNF, THIN, 18-8 SST | | 0.01 |
| 5 | 8 | 002-OFW-S008 | WASHER, FLAT, .375 IN, 1.0 IN. O.D. 18-8 SST | | 0.01 |

| | | | | | | |
|---|---|--|--|---|---------|--|
| SURFACE FINISH <input checked="" type="checkbox"/> UNLESS OTHERWISE SPECIFIED | | UNLESS OTHERWISE SPECIFIED DIMENSIONS ARE IN INCHES | | APPROVALS | DATE |  ELECTRO MECHANICAL INDUSTRIES, INC. 11230 NEESEHAW DRIVE HOUSTON, TEXAS 77065 1-800-453-0050 |
| MATERIAL | SEE PARTS LIST | TOLERANCES | | DRAWN C. SANCHEZ | 5.4.18 | |
| THIRD ANGLE PROJECTION |  | .00 ± .06 .000 ± .01 ± .005 | | CHECKED <i>[Signature]</i> | 5.10.18 | TITLE: DRAG CHAIN & TROUGH ASSEMBLY OCEAN APEX CATWALK MACHINE |
| NEXT ASSY | USED ON | FRACTIONS ± 1/16 ANGLES ± .25° HOLES: DRILLED OR PUNCHED +1/32 BURNED ± 1/32 | | ENGINEER/DESIGNER <i>[Signature]</i> | 5.10.18 | |
| APPLICATIONS | | | | PRODUCTION <i>[Signature]</i> | | SIZE B DRAWING NO. 1013-0000-0017 SCALE: 1:30 WEIGHT: 1313.1 lbs. SHEET 1 OF 1 |