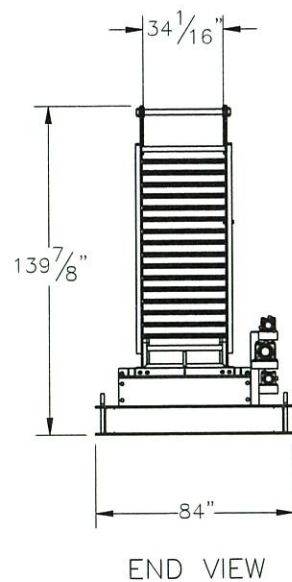
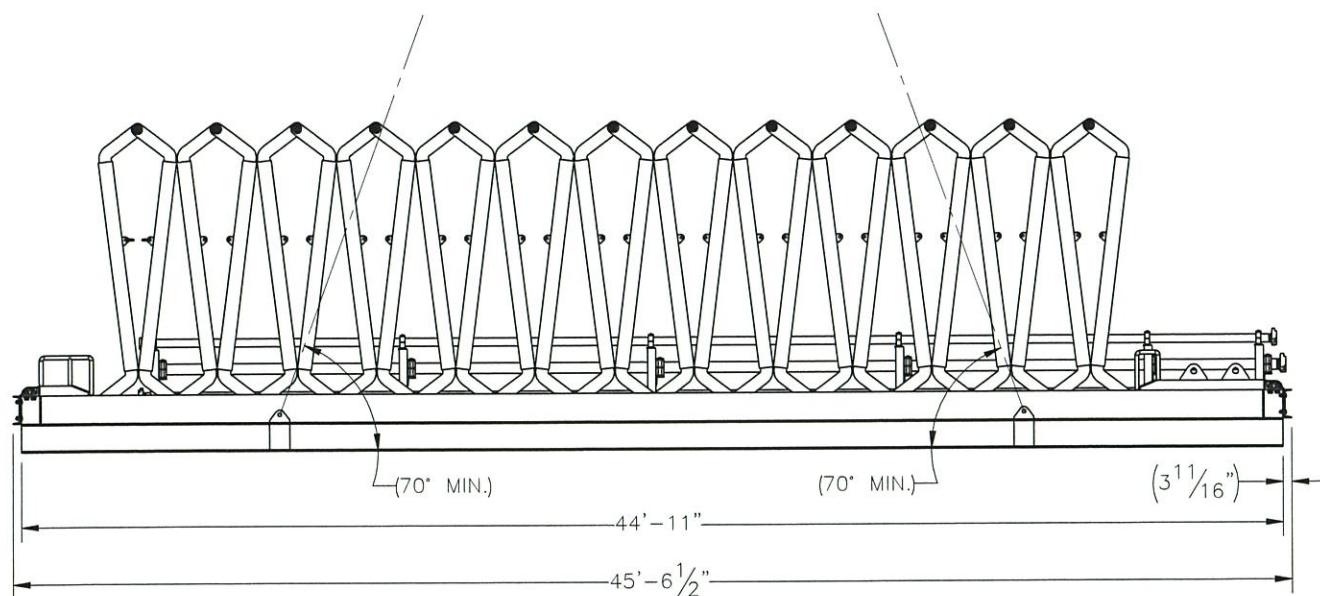
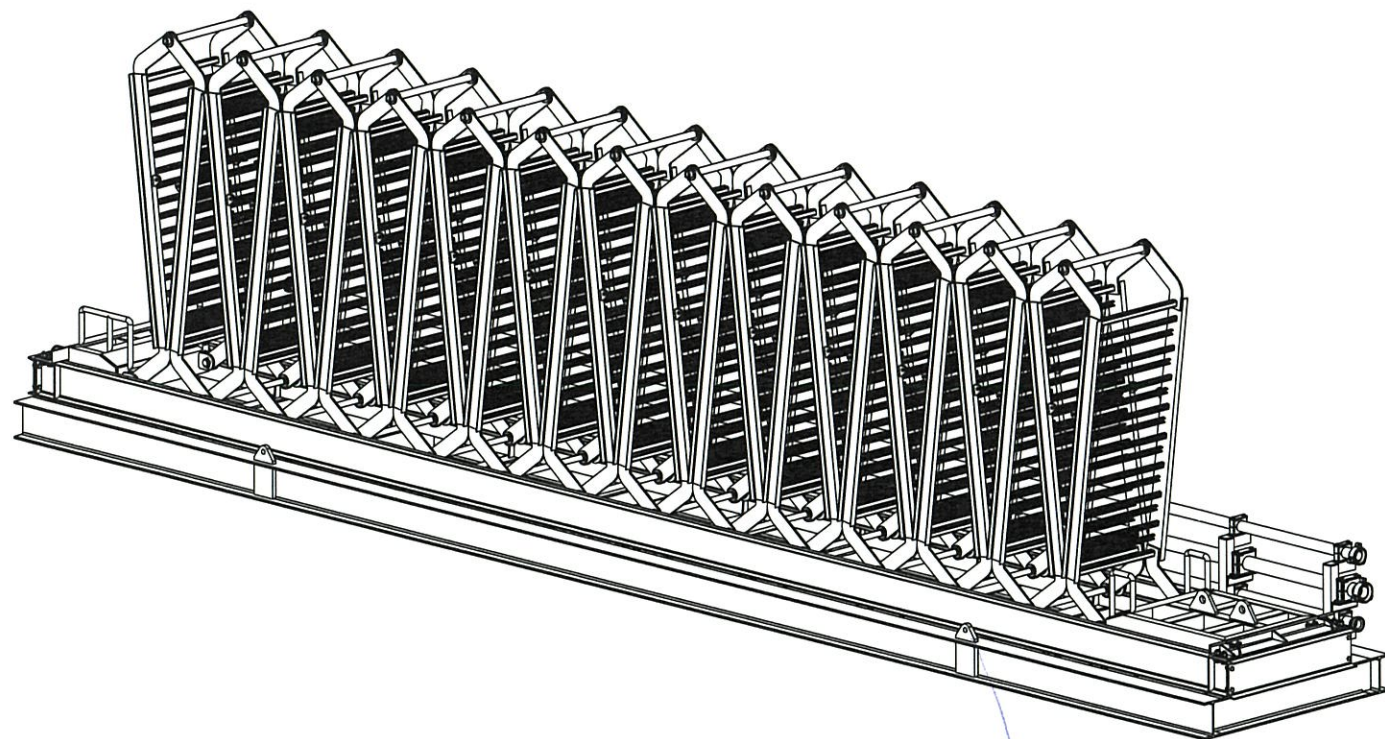




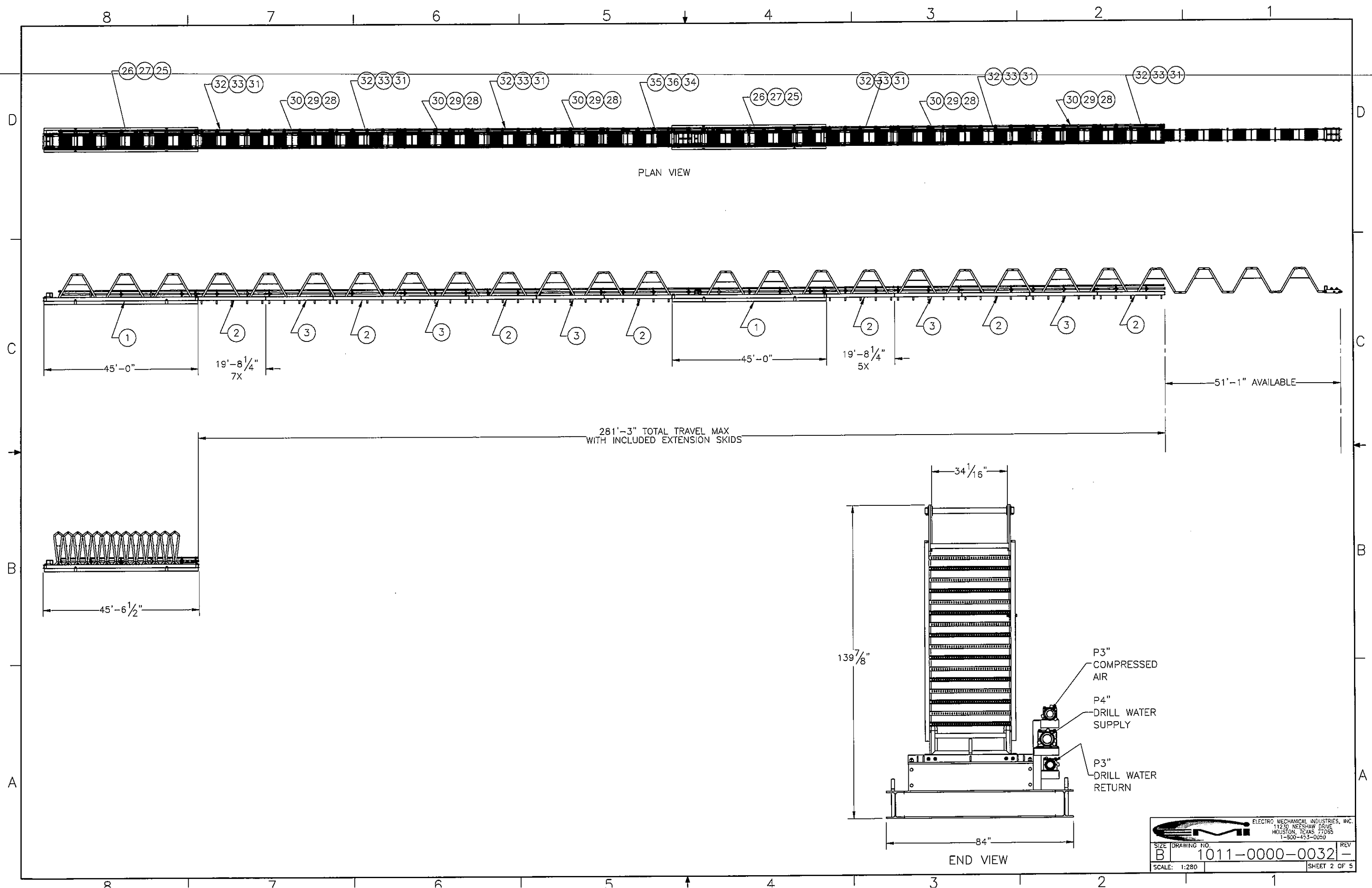
THE INFORMATION CONTAINED IN THIS DRAWING IS THE SOLE PROPERTY OF ELECTRO MECHANICAL INDUSTRIES, INC. ANY REPRODUCTION IN PART OR WHOLE WITHOUT THE WRITTEN PERMISSION OF ELECTRO MECHANICAL IND., IS PROHIBITED.




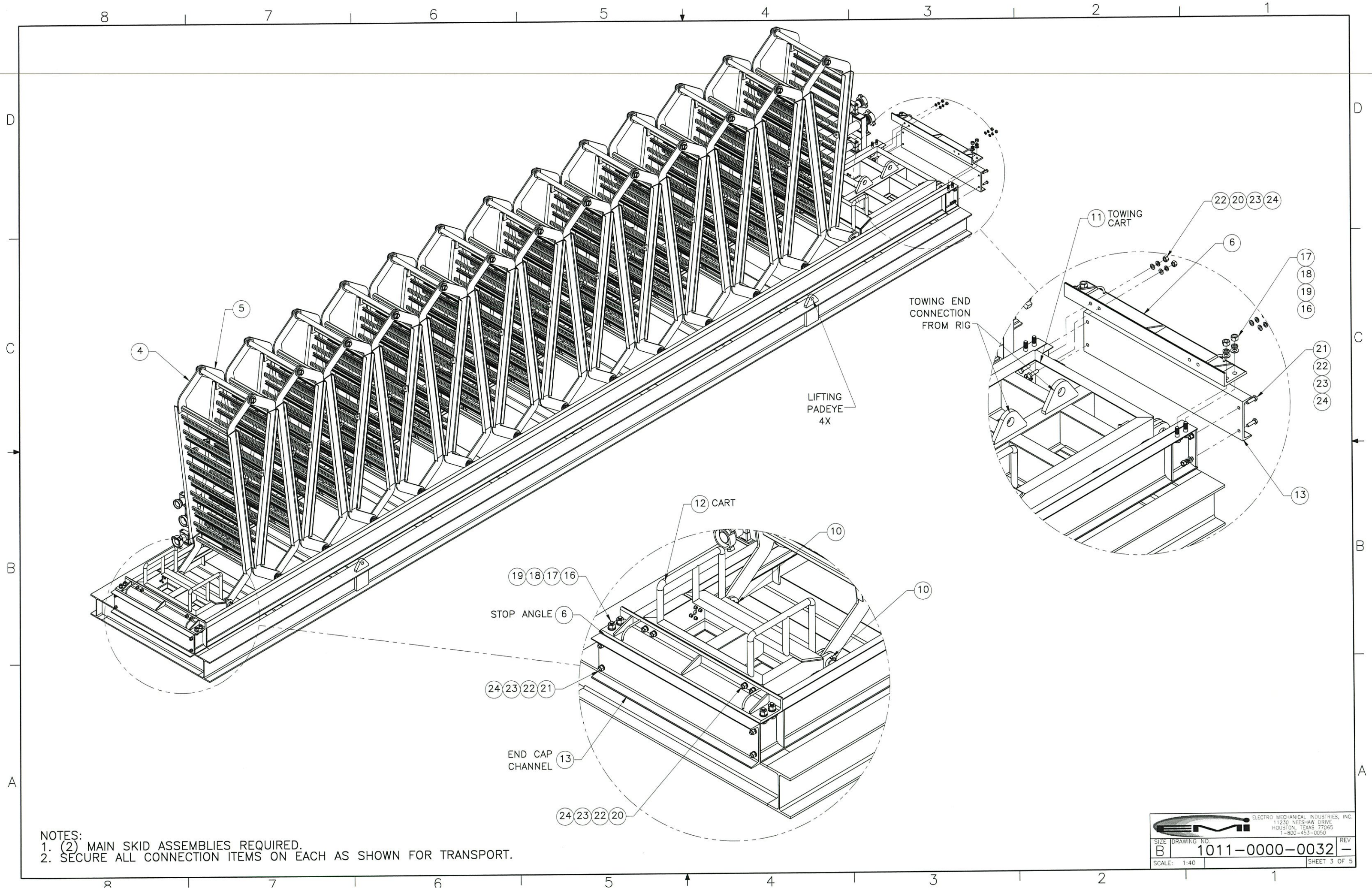
ITEM NO.	QTY REQD	PART NUMBER	DESCRIPTION	LENGTH	WEIGHT
1	2	W-001-651	MASTER SKID WELDMENT		10778.7
2	7	W-001-668	EXTENSION SKID A		2324.6
3	5	W-001-675	EXTENSION SKID B		2390.0
4	26	W-001-666	ACCORDION LEG, SECTION 1		319.2
5	26	W-001-667	ACCORDION LEG, SECTION 2		321.7
6	4	W-001-664	STOP ANGLE		138.0
7	24	A-000-188	WHEEL AXLE ASSEMBLY		20
8	26	A-000-191	HINGE PIPE ASSEMBLY		17.1
9	52	A-000-194	WIRE ROPE ASSEMBLY		4.2
10	10	A-000-323	HINGE PIN - ACCORDION		6.05
11	2	A-000-349	TOWING CART		777.3
12	2	A-000-350	JOINING CART ASSEMBLY		416.3
13	4	P-003-842	END CAP CHANNEL		139.75
14	104	160-085-0005	SHACKLE, .63 INCH, 6500LB, GALV		1.66
15	12	160-009-3600	PROTECTO-WRAP	60"	16.96
16	16	002-0BG-0039	BOLT, HX HD, 1.00"-8 X 3.50" LG, ASTM A325, GALV.		1.12
17	16	002-0NG-0008	NUT, HX, 1.00"-8UNC, GR 2H, GALV		0.42
18	16	002-0LW-G008	WASHER, SPLIT LOCK, 1.00", GALV		0.09
19	16	002-0FW-G009	WASHER, FLAT, 1.00", F436, GALV		0.08
20	16	002-0BG-0252	BOLT, HEX HD, .750-10UNC X 2.75 LG, ASTM A325, GALV		0.52
21	60	002-0BG-0019	BOLT, HEX HD, .750-10UNC X 2.50 LG, ASTM A325, GALV		0.49
22	76	002-0NG-0002	NUT, HX, .75-10UNC, GR 2H, GALV		0.19
23	76	002-0LW-G003	WASHER, SPLIT LOCK, .75, GALV		0.05
24	76	002-0FW-G003	WASHER, FLAT, .75 INCH, ASTM F436, GALV		0.04
25	2	W-001-752	P3" WELDMENT - LONG, DRILL WATER RETURN		423.7
26	2	W-001-753	P3" WELDMENT - LONG, COMPRESSED AIR		423.7
27	2	W-001-754	P4" WELDMENT - LONG, DRILL WATER SUPPLY		616.5
28	5	W-001-755	P3" WELDMENT - SHORT, DRILL WATER RETURN		212.2
29	5	W-001-757	P4" WELDMENT - SHORT, DRILL WATER SUPPLY		306.8
30	5	W-001-756	P3" WELDMENT - SHORT, COMPRESSED AIR		212.2
31	6	COMMON	3" HOSE ASSEMBLY X 237" LG, DRILL WATER RETURN		212.8
32	6	COMMON	3" HOSE ASSEMBLY X 237" LG, COMPRESSED AIR		212.8
33	6	COMMON	4" HOSE ASSEMBLY X 237" LG, DRILL WATER SUPPLY		307.8
34	1	COMMON	3" HOSE ASSEMBLY X 292" LG, DRILL WATER RETURN		259.6
35	1	COMMON	3" HOSE ASSEMBLY X 292" LG, COMPRESSED AIR		259.6
36	1	COMMON	4" HOSE ASSEMBLY X 292" LG, DRILL WATER SUPPLY		376.1

NOTE:  
FULLY LOADED MASTER SKID WEIGHT INCLUDING ACCORDIONS, PIPING, AND CABLING IS APPROX. 44,500 LBS EACH. (2 REQUIRED)


SURFACE FINISH <input checked="" type="checkbox"/> UNLESS OTHERWISE SPECIFIED		UNLESS OTHERWISE SPECIFIED DIMENSIONS ARE IN INCHES		APPROVALS		DATE		 ELECTRO MECHANICAL INDUSTRIES, INC. 11230 HEESHAW DRIVE HOUSTON, TEXAS 77065 1-800-453-0050	
MATERIAL SEE PARTS LIST		TOLERANCES		DRAWN C. SANCHEZ		12.3.19			
THIRD ANGLE PROJECTION 		.000 ± .005 .000 ± .015 .000 ± .005		CHECKED <i>[Signature]</i>		12/10/19		REV	
NEXT ASSY		FRACTIONS ± 1/16		ENGINEER/DISIGNER <i>[Signature]</i>		12/10/19		SIZE B	
USED ON		ANGLES ± .25°		PRODUCTION <i>[Signature]</i>		12-10-19		DRAWING NO. 1011-0000-0032	
APPLICATIONS		HOLES: DRILLED OR PUNCHED +.32 BURNED ±.32		SCALE: 1:4		WEIGHT: 83497 lbs.		SHEET 1 OF 5	

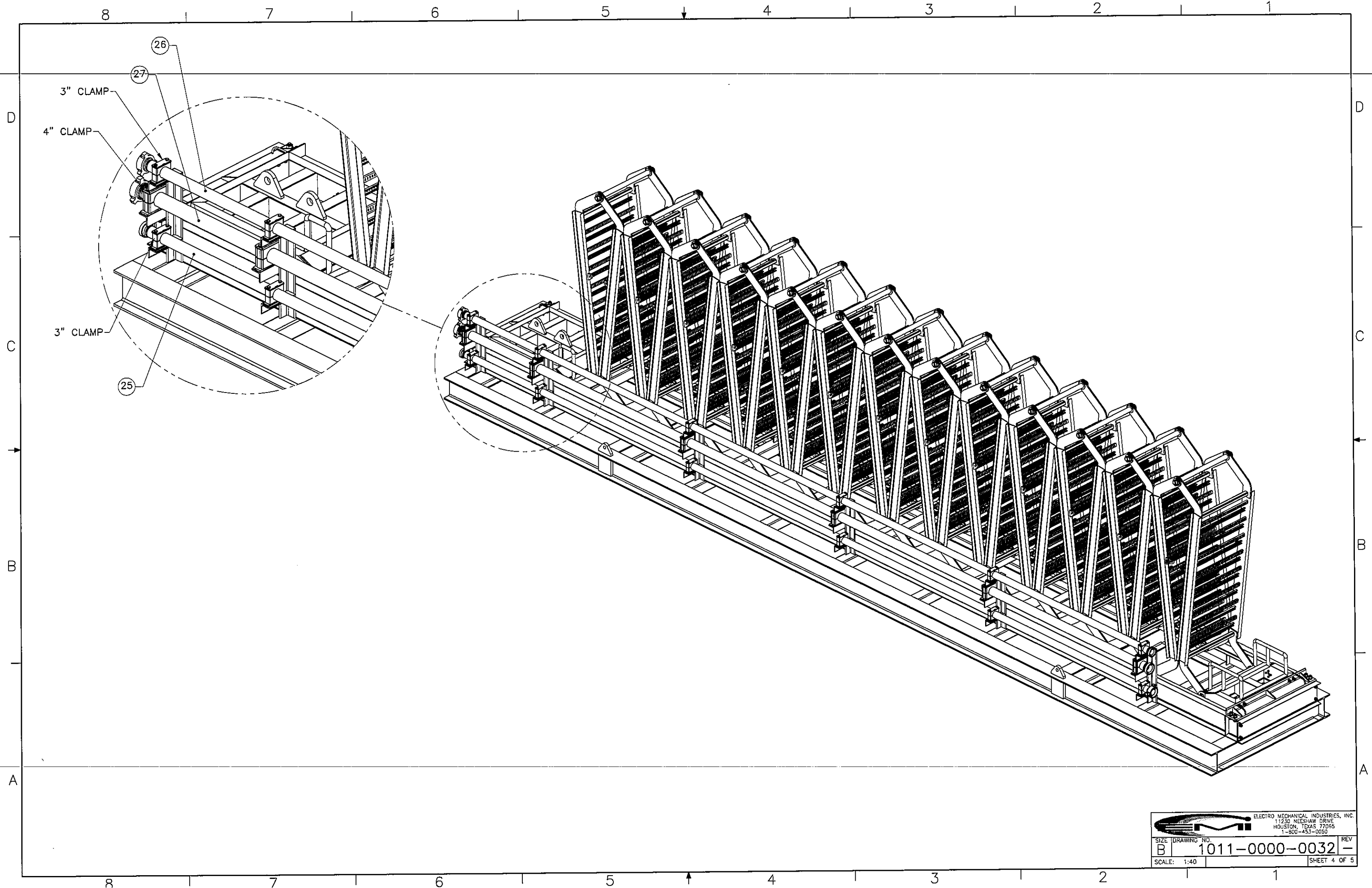



		ELECTRO MECHANICAL INDUSTRIES, INC. 11230 NEESHAW DRIVE HOUSTON, TEXAS 77065 1-800-453-0050	
SIZE	DRAWING NO.	REV	
B	1011-0000-0032	-	
SCALE: 1:280			SHEET 2 OF 5

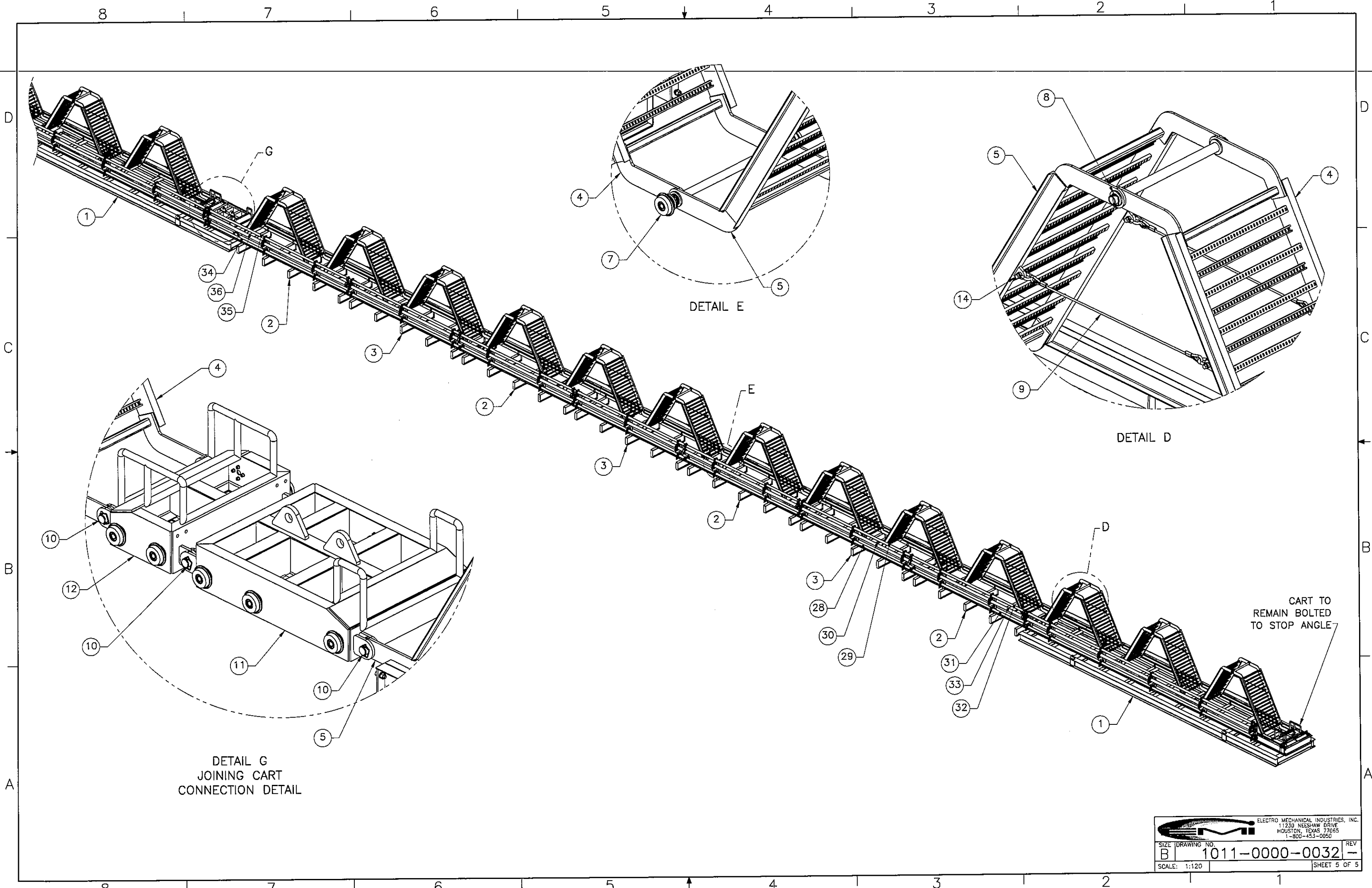


NOTES:  
 1. (2) MAIN SKID ASSEMBLIES REQUIRED.  
 2. SECURE ALL CONNECTION ITEMS ON EACH AS SHOWN FOR TRANSPORT.

 ELECTRO MECHANICAL INDUSTRIES, INC. 11230 NEESHAW DRIVE HOUSTON, TEXAS 77065 1-800-453-0050		REV
SIZE	DRAWING NO.	
B	1011-0000-0032	
SCALE: 1:40		SHEET 3 OF 5




		ELECTRO MECHANICAL INDUSTRIES, INC. 11230 NEESEAW DRIVE HOUSTON, TEXAS 77065 1-800-453-0050	
SIZE	DRAWING NO.	REV.	
B	1011-0000-0032	-	-
SCALE:	1:40	SHEET 4 OF 5	



DETAIL G  
JOINING CART  
CONNECTION DETAIL

DETAIL D

DETAIL E

 ELECTRO MECHANICAL INDUSTRIES, INC. 11230 NEESEY DRIVE HOUSTON, TEXAS 77065 1-800-453-0050		
SIZE	DRAWING NO.	REV
B	1011-0000-0032	-
SCALE: 1:120	SHEET 5 OF 5	