

THE INFORMATION CONTAINED IN THIS DRAWING IS THE SOLE PROPERTY OF ELECTRO MECHANICAL INDUSTRIES, INC. ANY REPRODUCTION IN PART OR WHOLE WITHOUT THE WRITTEN PERMISSION OF ELECTRO MECHANICAL IND., IS PROHIBITED.

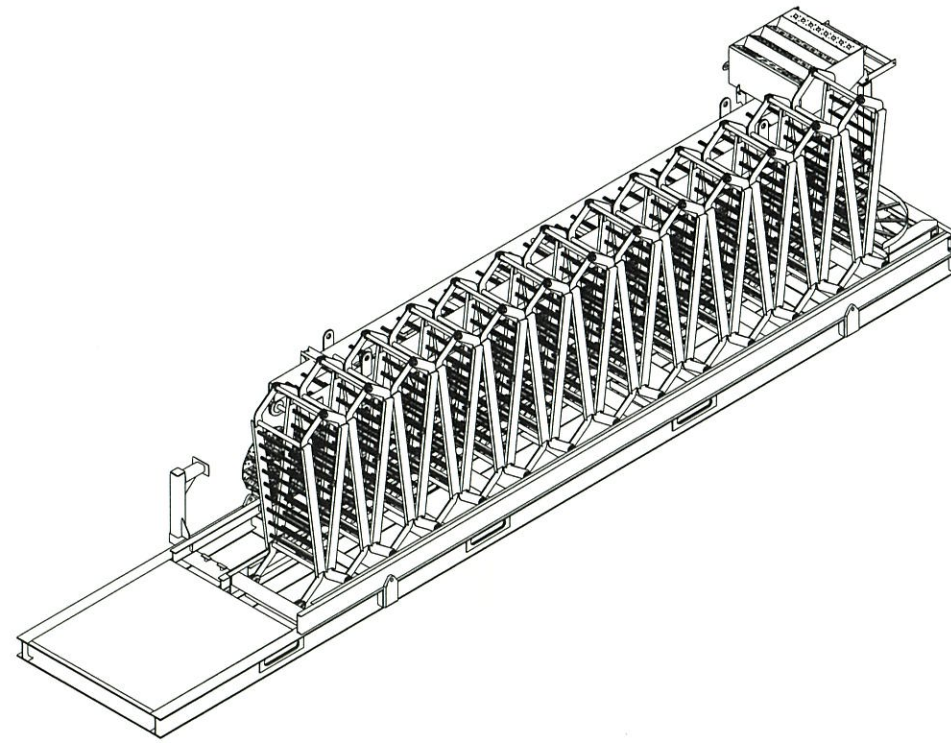
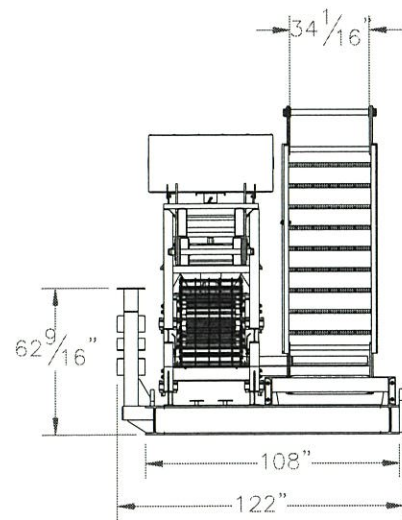
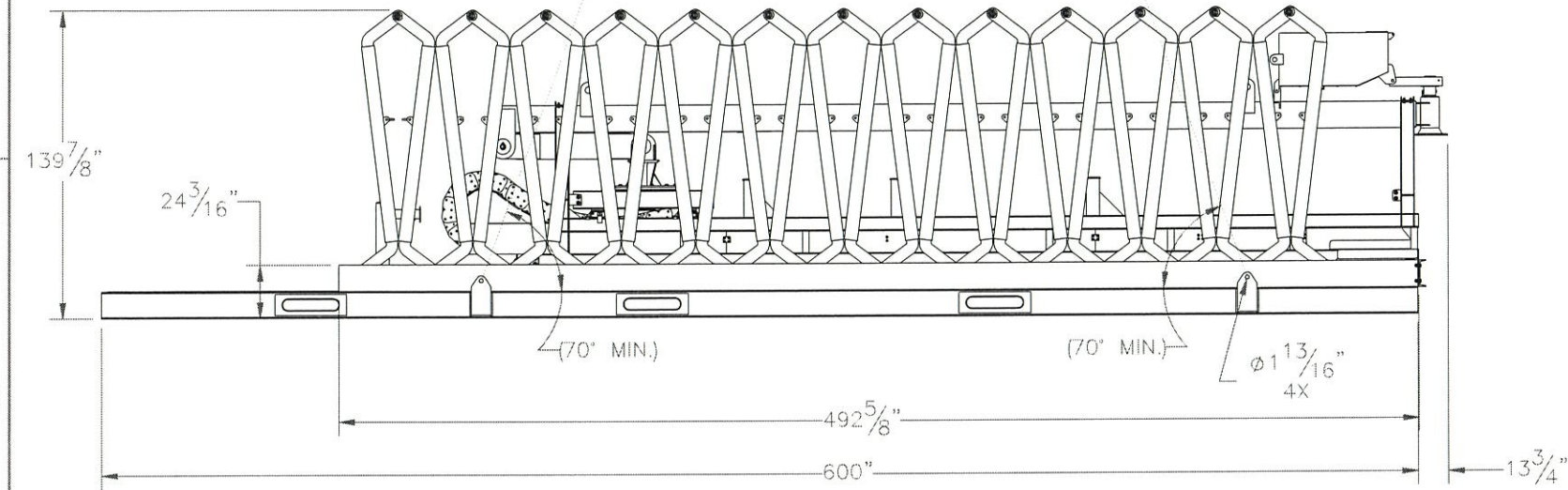
D

C

B

A

8 7 6 5 4 3 2 1

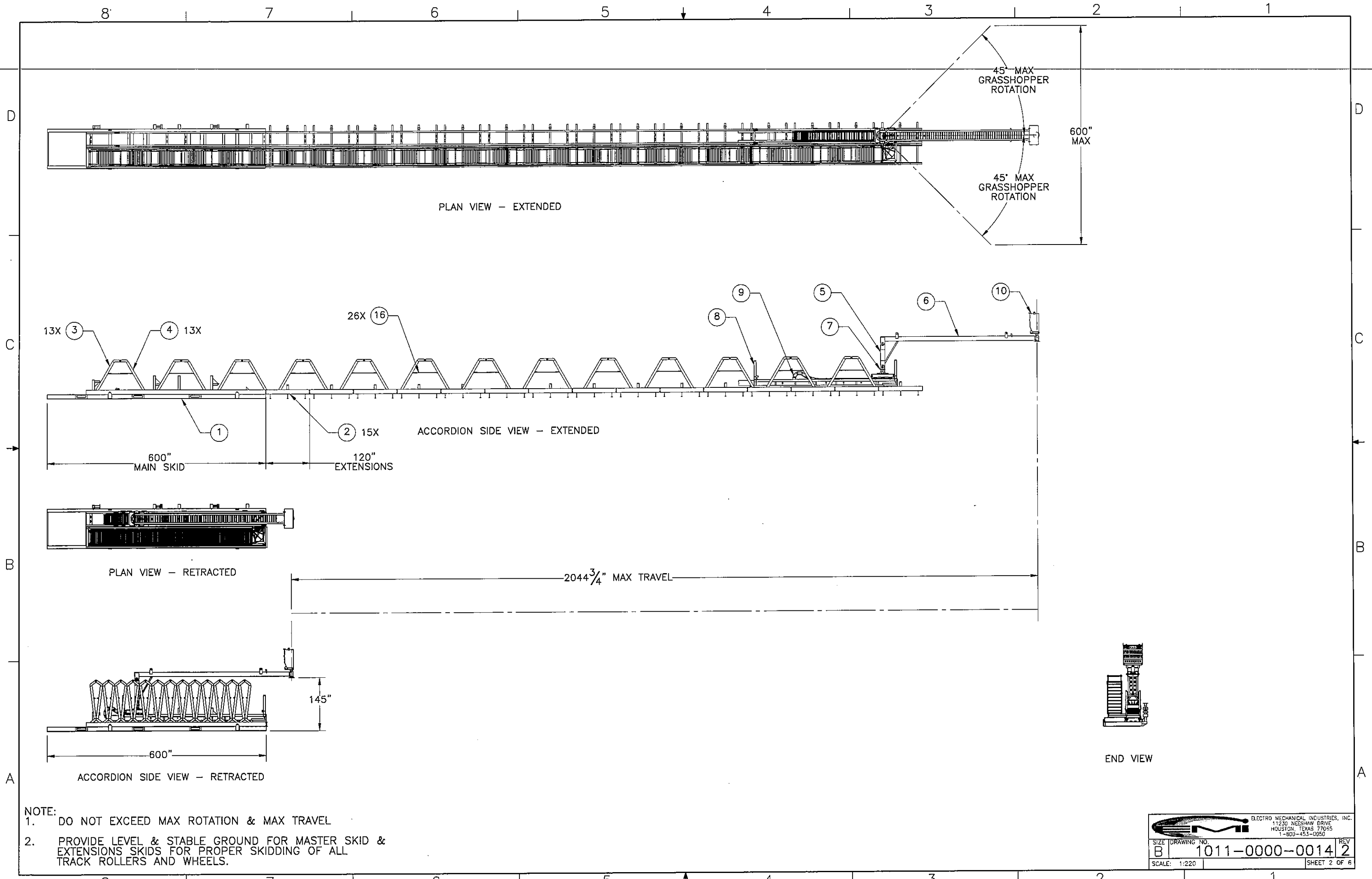


ITEM NO.	QTY.	PART NUMBER	DESCRIPTION	WEIGHT
1	1	W-001-210	MASTER SKID WELDMENT	17810.7
2	15	W-001-220	EXTENSION SKID	1758.4
3	13	W-000-935	ACCORDION LEG, SECTION 1	303.3
4	13	W-000-936	ACCORDION LEG, SECTION 2	305.1
5	1	W-001-213	GRASSHOPPER ARM, LOWER	593.1
6	1	W-001-214	GRASSHOPPER ARM, UPPER	3254.0
7	1	A-000-264	GRASSHOPPER SWIVEL MOUNT ASSEMBLY	1454
8	1	A-000-245	DRAG CHAIN CARRIAGE ASSEMBLY	5160.3
9	1	1013-0010-0031	DRAG CHAIN ASSEMBLY	684.9
10	1	1018-0030-0010	J-BOX ASSEMBLY	422.3
11	1	150-254-0520	BASE, JUCTION BOX	197.1
12	1	P-002-414	RECEIVER INTERNAL DISC	0.7
13	14	A-000-188	WHEEL AXLE ASSEMBLY	20
14	13	A-000-191	HINGE PIPE ASSEMBLY	17.1
15	1	A-000-193	HINGE BAR ASSEMBLY	43.1
16	26	A-000-194	WIRE ROPE ASSEMBLY	4.2
17	3	A-000-323	HINGE PIN - ACCORDION	6.05
18	1	W-001-311	KNEE-BRACE	85.4
19	2	P-003-027	LOCKING PIN	1.00
20	2	P-002-432	CAP CHANNEL	34.6
21	1	P-002-723	END CAP CHANNEL	139.75
22	52	160-085-0005	SHACKLE, .63 INCH, 6500LB, GALV	1.66
23	12	002-0BG-0054	BOLT, HX HD, 1.00-8UNC X 4.50 LG, GR B7, GALV	1.32
24	12	002-0NG-0008	NUT, HX, 1.00-8UNC, GR 2H, GALV	0.42
25	60	002-0BG-R034	BOLT, HEX HD, .75-10UNC X 2.25 LG, ASTM A325, GALV	0.46
26	60	002-0NG-0002	NUT, HX, .75-10UNC, GR 2H, GALV	0.19
27	60	002-0LW-G003	WASHER, SPLIT LOCK, .75, GALV	0.05
28	60	002-0FW-G003	WASHER, FLAT, .75 INCH, ASTM F436, GALV	0.03
29	68	002-0BG-0014	BOLT, HEX HD, .500-13UNC X 2.0 LG, ASTM A325, GALV	0.2
30	68	002-0NG-0010	NUT, HEX, .500-13UNC, GR 2H, GALV	0.06
31	68	002-0LW-G002	WASHER, SPLIT LOCK, .500", GALV	0.01
32	68	002-0FW-G002	WASHER, FLAT, .500", F436, GALV	0.02
33	1	002-0OC-0030	.75 DIA X 6.5 LG, CLEVIS PIN, ZINC	0.9
34	2	002-0LP-0008	LOCKING PIN, .25 DIA. X 1.38 USABLE, ROUND, 18-8 SST	0.011
35	1	002-006-0007	.125" WIRE DIA., 2.5" LG, REUSABLE HAIR PIN, ZINC PLD	0.0
36	2	002-0OC-0055	CLEVIS PIN, 1.0 DIA x 1.688 USABLE, ZINC PLTD	0.54
37	4	002-0OC-0054	CLEVIS PIN, .5 DIA. X 1.25 USABLE LENGTH, ZINC PLATED	0.1
38	4	160-009-3600	PROTECTO-WRAP, 6" X 72" LG.	16.99
39	1	150-254-0691	HDPE .5" THK, 4" DIA, SPACER	0.2
40	2	A-000-322	HINGE PIN - GRASSHOPPER	7.78


SURFACE FINISH <input checked="" type="checkbox"/> UNLESS OTHERWISE SPECIFIED		UNLESS OTHERWISE SPECIFIED DIMENSIONS ARE IN INCHES		APPROVALS		DATE	
MATERIAL SEE PARTS LIST		TOLERANCES		DRAWN C. SANCHEZ		3.25.19	
THIRD ANGLE PROJECTION		FRACTIONS ± 1/16		CHECKED J. CRITELLI		4.15.19	
NEXT ASSY		ANGLES ± .25°		ENGINEER/DESIGNER J. BREEN		4.16.19	
USED ON		HOLES: DRILLED OR PUNCHED ± 1/32		PRODUCTION JKS		4.17.19	
APPLICATIONS		BURNED ± 1/32		ELECTRO MECHANICAL INDUSTRIES, INC. 11230 NEESEAW DRIVE HOUSTON, TEXAS 77065 1-800-453-0050		TITLE: ACCORDION CABLE MANAGEMENT SYSTEM, DRILLMEC STRIKER 800 RIG	
REV. 2		DCN # DCN00686		DESCRIPTION ADDED HINGE PIN ASSEMBLIES, UPDATED MASTER SKID & GRASSHOPPER SWIVEL		DATE 7.23.19	
BY CS		APPROVED JPB		SIZE B		DRAWING NO. 1011-0000-0014	
SCALE: 1:80		WEIGHT: 38468 lbs.		SHEET 1 OF 6		REV 2	

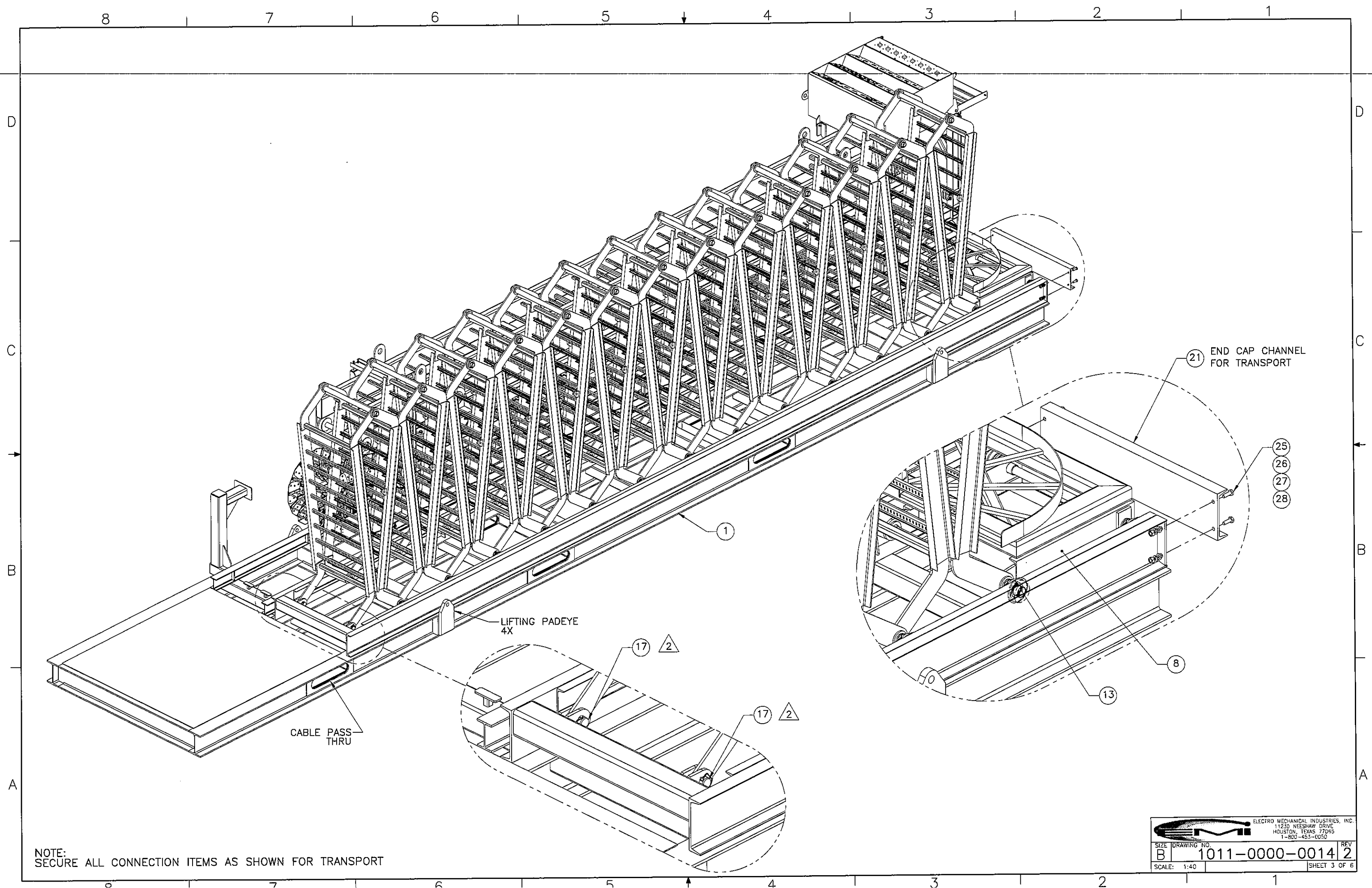
NOTE: MASTER SKID SHIPPING WEIGHT INCLUDING ELECTRICAL CABLE & EXCLUDING PIPING: APPROX. 62,300 LBS

REV.	DCN #	DESCRIPTION	DATE	BY	APPROVED
2	DCN00686	ADDED HINGE PIN ASSEMBLIES, UPDATED MASTER SKID & GRASSHOPPER SWIVEL	7.23.19	CS	JPB




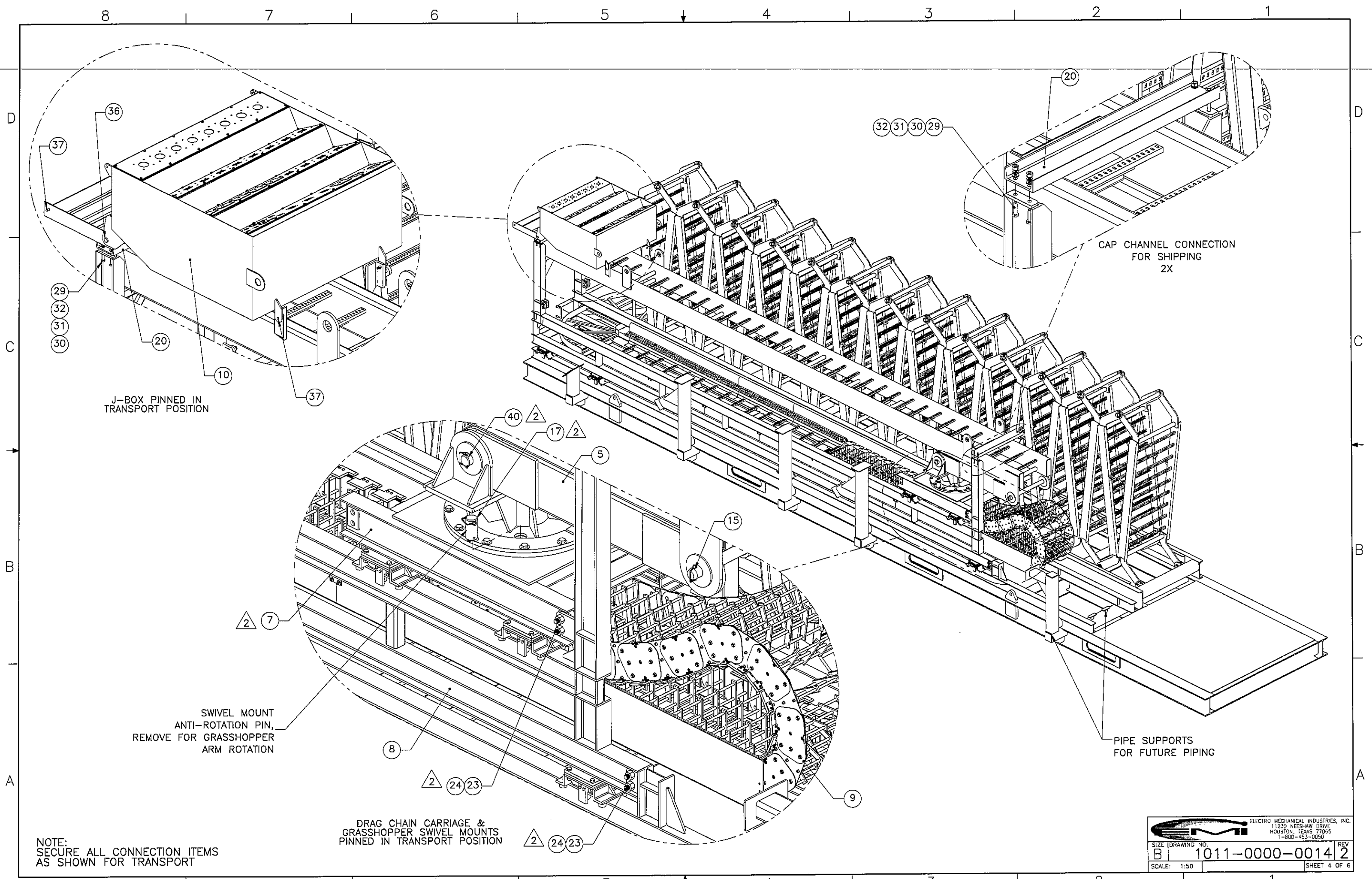
- NOTE:
- DO NOT EXCEED MAX ROTATION & MAX TRAVEL
  - PROVIDE LEVEL & STABLE GROUND FOR MASTER SKID & EXTENSIONS SKIDS FOR PROPER SKIDDING OF ALL TRACK ROLLERS AND WHEELS.

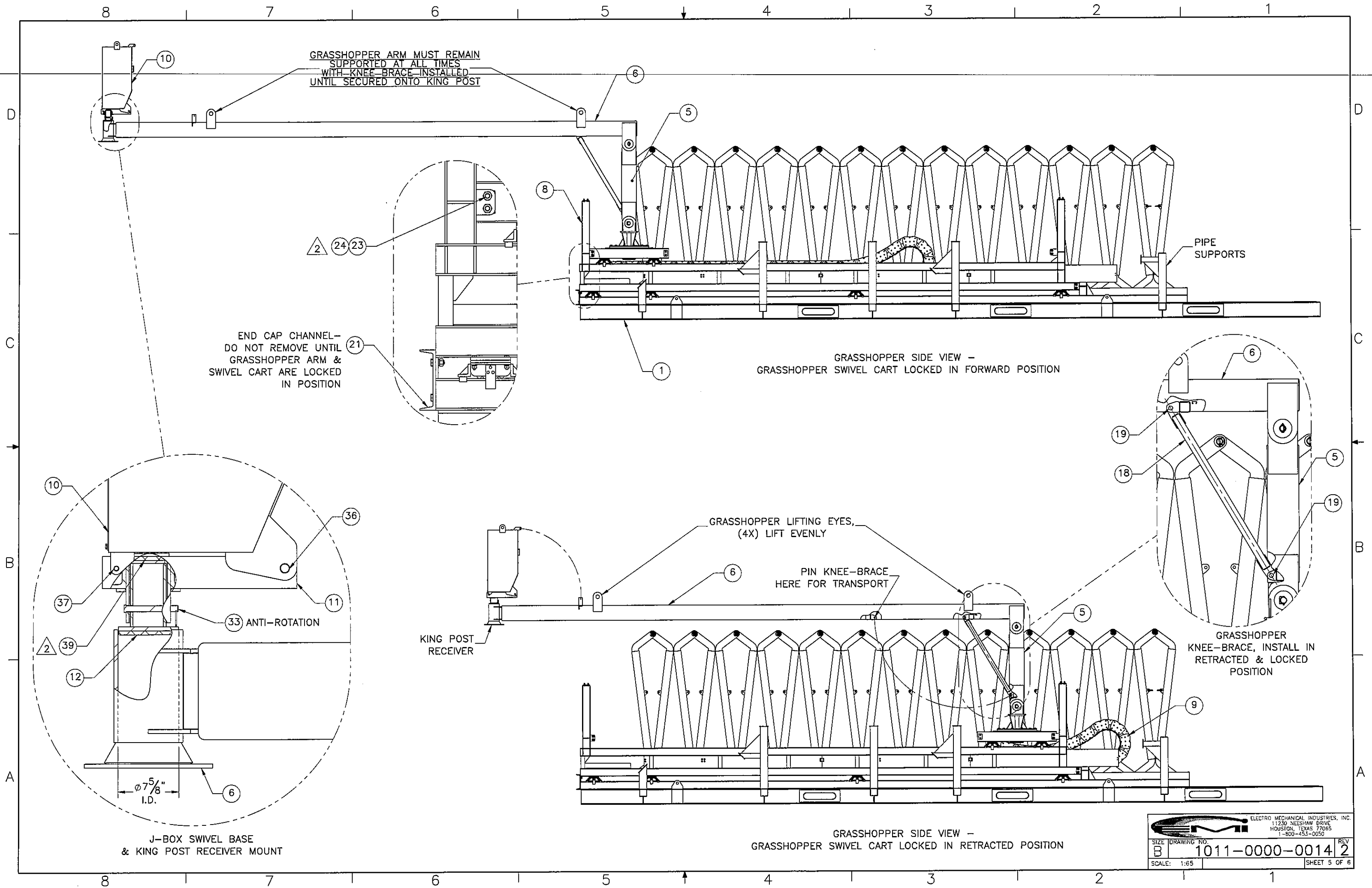
		ELECTRO MECHANICAL INDUSTRIES, INC.	
		11230 NEESHAW DRIVE HOUSTON, TEXAS 77055 1-800-453-0050	
SIZE	DRAWING NO.	REV	
B	1011-0000-0014	2	
SCALE: 1:220	SHEET 2 OF 6		




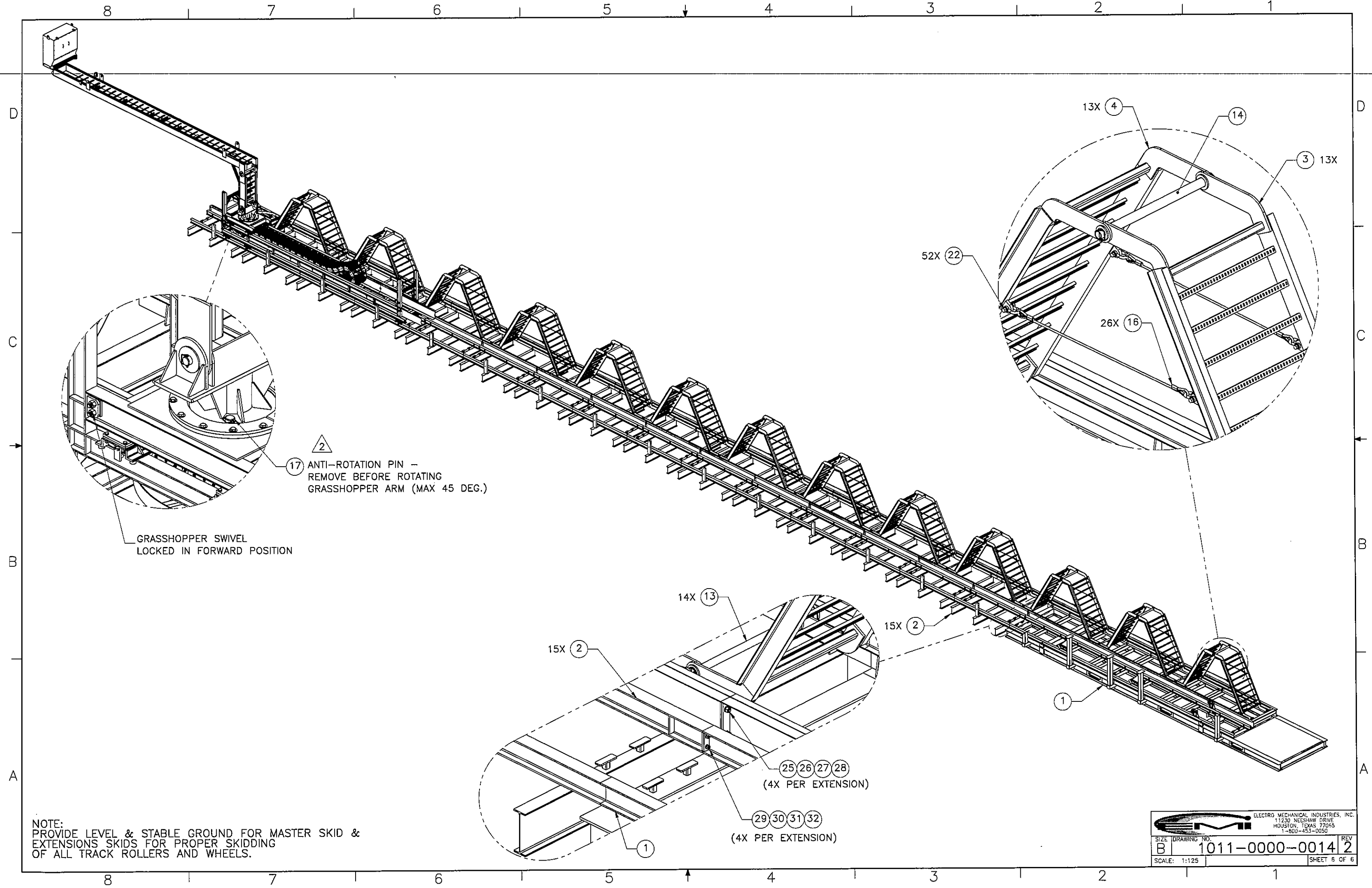
NOTE:  
SECURE ALL CONNECTION ITEMS AS SHOWN FOR TRANSPORT

		ELECTRO MECHANICAL INDUSTRIES, INC. 11230 NEESAW DRIVE HOUSTON, TEXAS 77065 1-800-453-0050	
SIZE	DRAWING NO.	REV	
B	1011-0000-0014	2	
SCALE:	1:40	SHEET 3 OF 6	





		ELECTRO MECHANICAL INDUSTRIES, INC. 11230 NEESAW DRIVE HOUSTON, TEXAS 77065 1-800-453-0050	
SIZE B	DRAWING NO. 1011-0000-0014	REV 2	SHEET 5 OF 6
SCALE: 1:65			



NOTE:  
 PROVIDE LEVEL & STABLE GROUND FOR MASTER SKID &  
 EXTENSIONS SKIDS FOR PROPER SKIDDING  
 OF ALL TRACK ROLLERS AND WHEELS.

		ELECTRO MECHANICAL INDUSTRIES, INC. 11230 NEESHAW DRIVE HOUSTON, TEXAS 77065 1-800-453-0050	
SIZE	DRAWING NO.	REV	
B	1011-0000-0014	2	
SCALE: 1:125			SHEET 6 OF 6