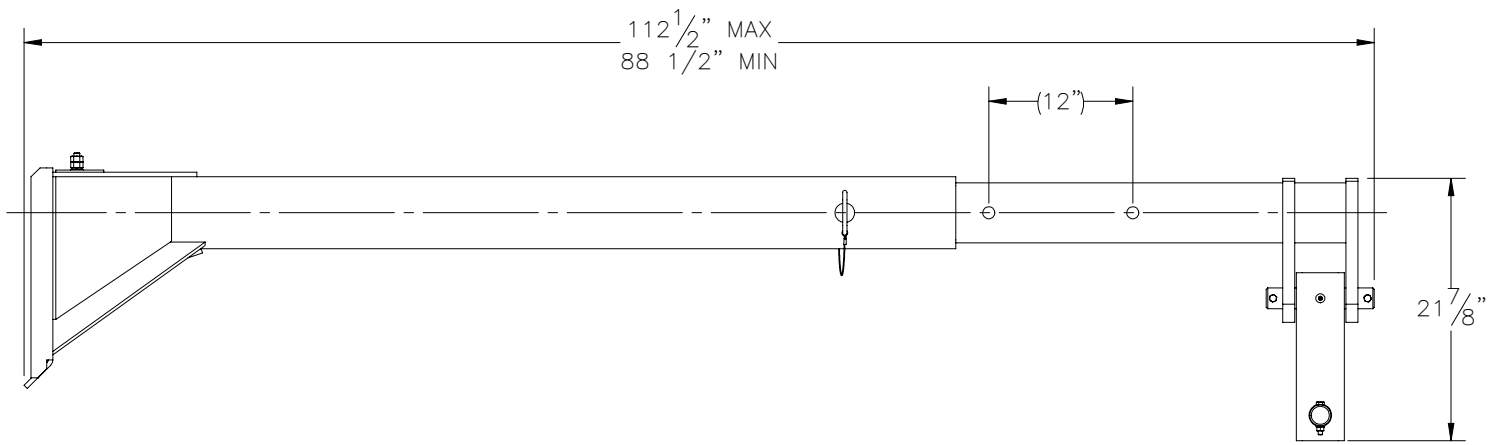
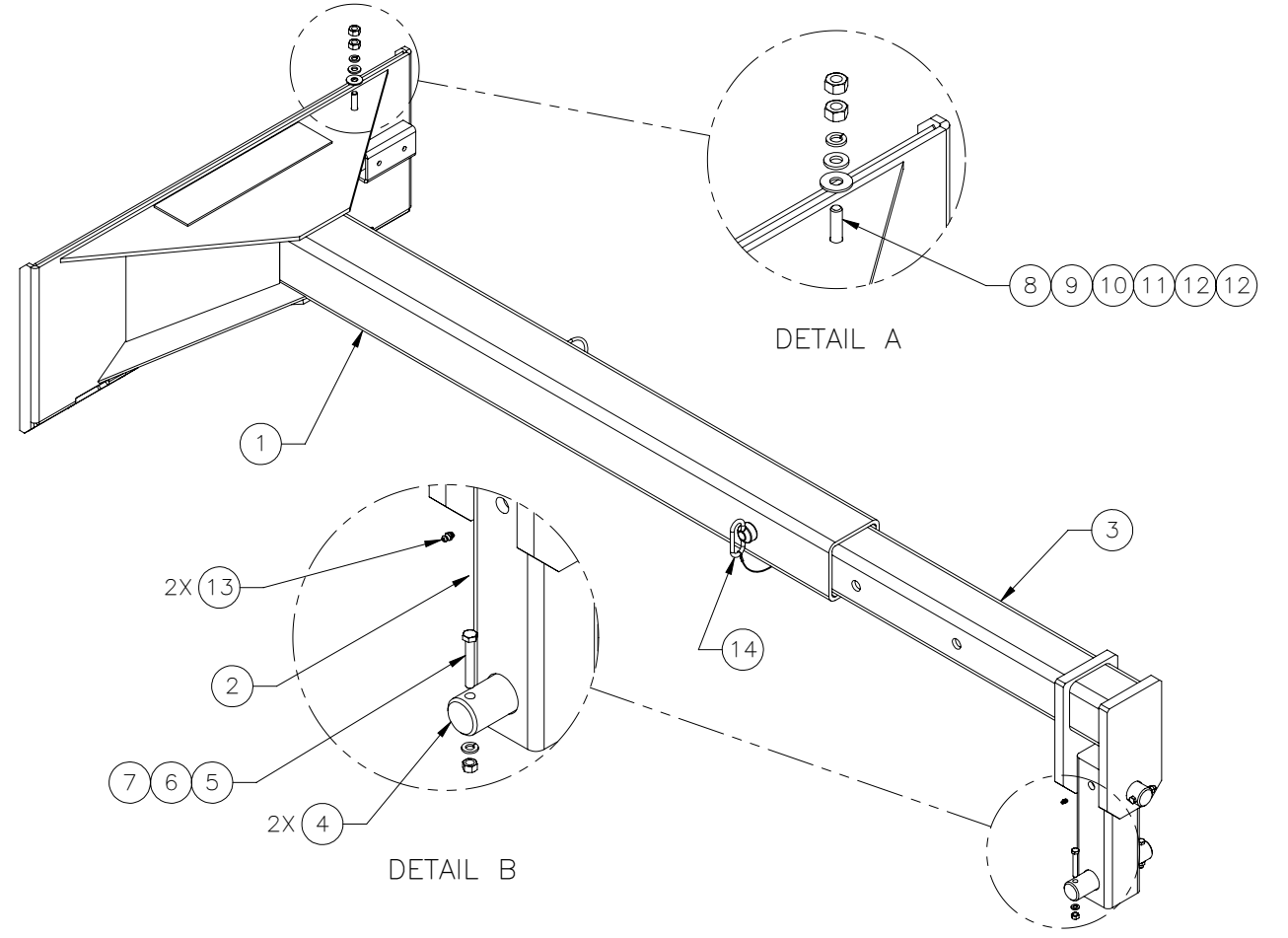
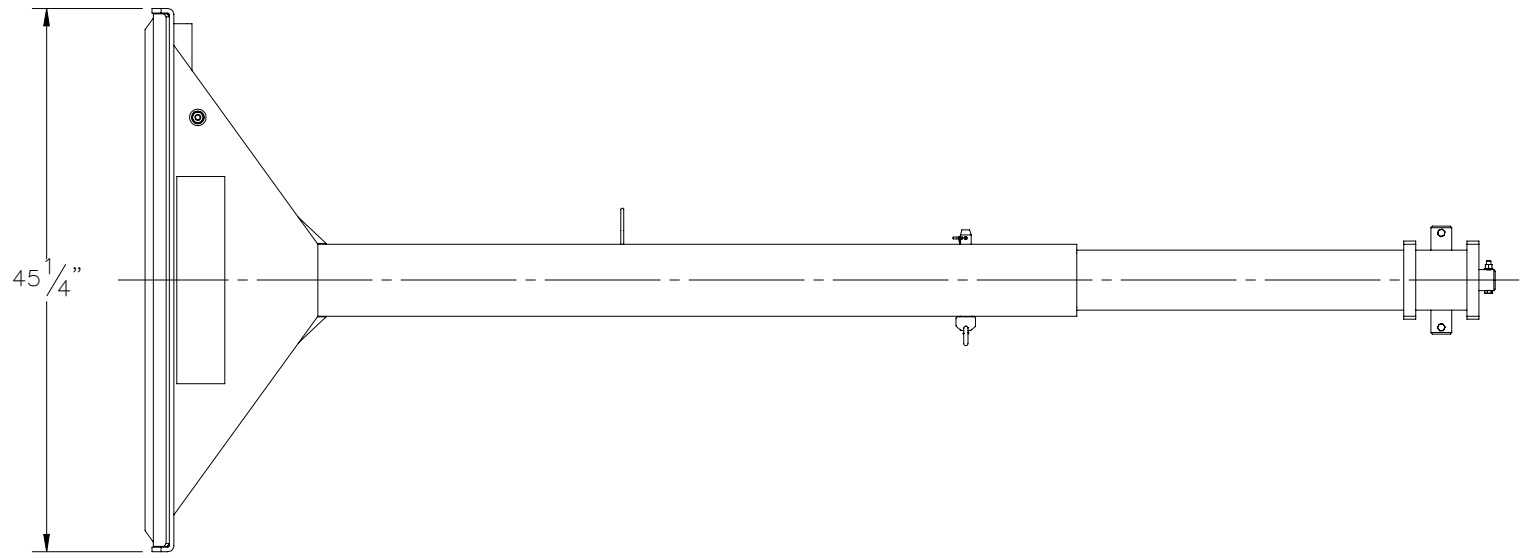

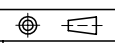


THE INFORMATION CONTAINED IN THIS DRAWING IS THE SOLE PROPERTY OF ELECTRO MECHANICAL INDUSTRIES, INC. ANY REPRODUCTION IN PART OR WHOLE WITHOUT THE WRITTEN PERMISSION OF ELECTRO MECHANICAL IND., IS PROHIBITED.



ITEM NO.	QTY REQD	PART NUMBER	DESCRIPTION	LENGTH	WEIGHT
1	1	W-002-553	EXTENSION ARM WELDMENT		367.64
2	1	P-006-651	ADJUSTMENT BAR	14"	56.28
3	1	W-002-554	ADJ PIPE WELDMENT		128.02
4	2	P-006-652	DOWEL PIN	9"	5.97
5	4	002-0BG-0222	BOLT, HH, .375-16 X 2.50, GALV, GR 5, PT X 1.25	2.50	0.0955
6	4	002-0LW-G005	WASHER, SPLIT LOCK, .375, GALV		0.01
7	4	002-0NG-0003	NUT, HEX, .375-16, GALV, GR 2H		0.015
8	1	002-0BG-0014	BOLT, HH, .500-13 X 2.00, GALV, A325, PT X 1.00	2"	0.1697
9	1	002-0FW-G020	WASHER, FLAT, .500, GALV, USS		0.04
10	1	002-0FW-G002	WASHER, FLAT, .500, GALV, F436		0.03
11	1	002-0LW-G002	WASHER, SPLIT LOCK, .500, GALV		0.014
12	2	002-0NG-0010	NUT, HEX, .500-13, GALV, GR 2H		0.06
13	2	002-0GF-0001	Grease Fitting, 1/4"-28, ZINC		
14	1	002-0LP-0013	CLEVIS PIN, LOOP-GRIP, WITH HANDLE		

SURFACE FINISH <input checked="" type="checkbox"/> UNLESS OTHERWISE SPECIFIED		UNLESS OTHERWISE SPECIFIED DIMENSIONS ARE IN INCHES		APPROVALS		DATE		 ELECTRO MECHANICAL INDUSTRIES, INC. 11230 NEESESHAW DRIVE HOUSTON, TEXAS 77065 1-800-453-0050	
MATERIAL SEE PARTS LIST		TOLERANCES .0 ±.06 .00 ±.015 .000 ±.005 FRACTIONS ± 1/16 ANGLES ± .25° HOLES: DRILLED OR PUNCHED +1/32 BURNED ±1/32		DRAWN J. ROACH		1/27/2023		TITLE: BOBCAT EXTENSION ARM	
THIRD ANGLE PROJECTION 				CHECKER B. HUTSON		1/27/2023			
NEXT ASSY		USED ON		ENGINEER J. Breen		2/20/2023			
APPLICATIONS				PRODUCTION J. KERNER		2/20/2023			
				SIZE B		DRAWING NO. 1010-0000-0201		REV 0	
				SCALE: 1:16		WEIGHT: 566.73 lbs.		SHEET 1 OF 1	