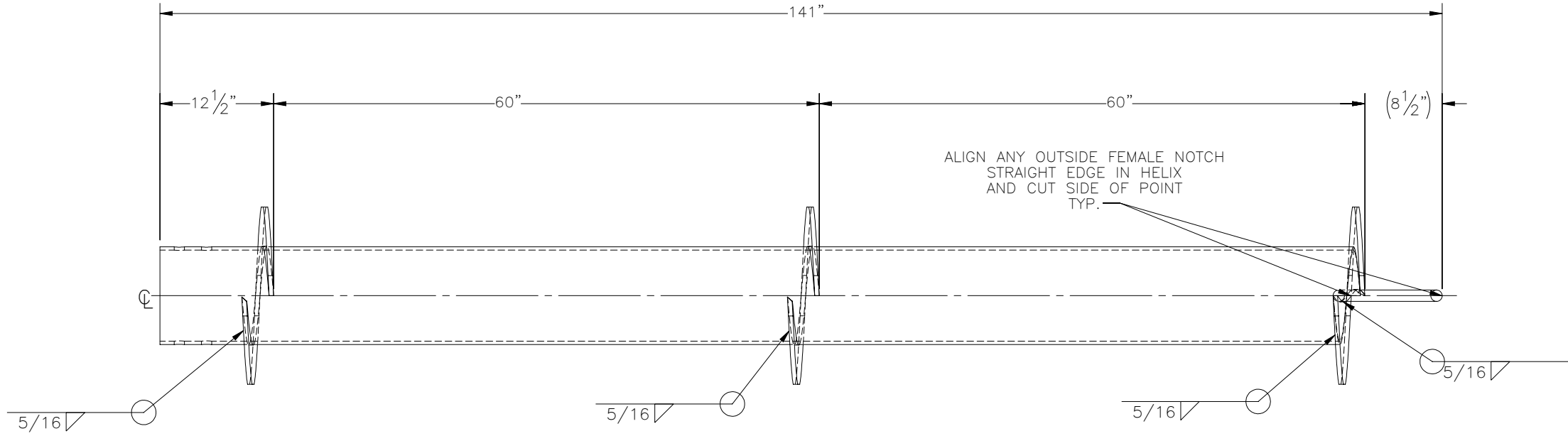
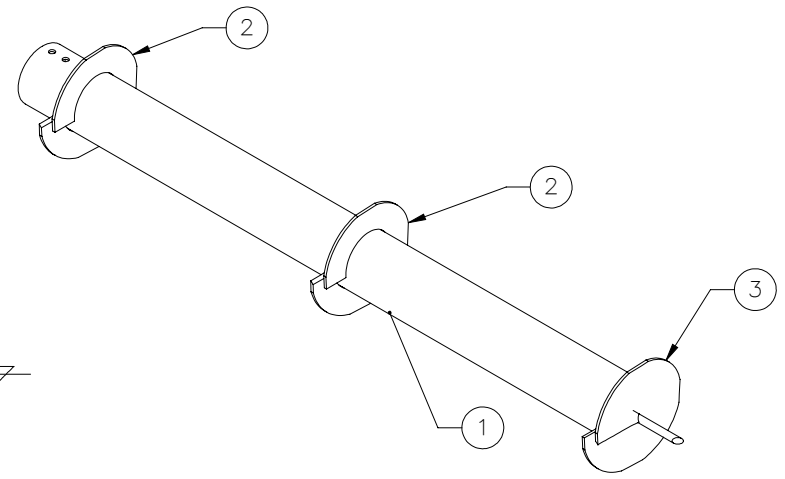
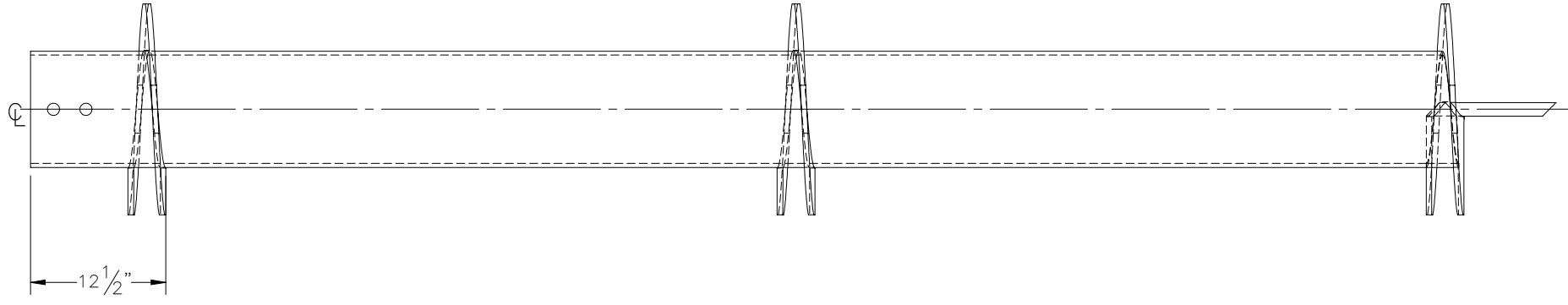
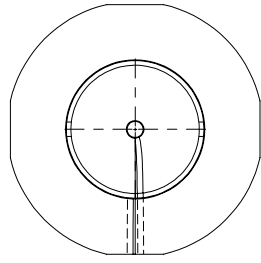



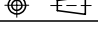
THE INFORMATION CONTAINED IN THIS DRAWING IS THE SOLE PROPERTY OF ELECTRO MECHANICAL INDUSTRIES, INC. ANY REPRODUCTION IN PART OR WHOLE WITHOUT THE WRITTEN PERMISSION OF ELECTRO MECHANICAL IND., IS PROHIBITED.



- NOTES:  
UNLESS OTHERWISE SPECIFIED,
1. ALL WELDING PER AWS D1.1, FCAW, E7XT-1 AND GMAW, ER70S-6 ELECTRODES.
  2. SQUARENESS OF WELDED COMPONENTS TO BE WITHIN +/- 1/16".
  3. ALL WELDS 3/16" FILLET OR SEAM WELDS ALL AROUND AS APPLICABLE PER JOINT.
  4. ALL CAPTIVE TUBES MUST HAVE MIN. TWO WEEP HOLES (ONE UPPER, ONE LOWER) 7/16" DIA.
  5. GALVANIZE PER ASTM A123.

ITEM NO.	QTY REQD	PART NUMBER	DESCRIPTION	LENGTH	WEIGHT
1	1	P-007-204	HELICAL LEAD SHAFT	132"	440.25
2	2	P-007-203	10" HELICAL FLIGHT, MID-SHAFT		30.72
3	1	W-002-785	10" HELICAL FLIGHT/PIER POINT WELDMENT		47.18

SURFACE FINISH	UNLESS OTHERWISE SPECIFIED	UNLESS OTHERWISE SPECIFIED DIMENSIONS ARE IN INCHES	APPROVALS	DATE	 ELECTRO MECHANICAL INDUSTRIES, INC. 11230 NEESESHAW DRIVE HOUSTON, TEXAS 77065 1-800-453-0050	
MATERIAL	SEE PARTS LIST	TOLERANCES	DRAWN	H. MAUERMANN		1/16/2024
THIRD ANGLE PROJECTION		FRACTIONS	CHECKER	J. Breen		1/16/2024
NEXT ASSY	USED ON	ANGLES	ENGINEER	J. Breen		1/16/2024
APPLICATIONS		HOLES: DRILLED OR PUNCHED	PRODUCTION	J. KERNER		1/16/2024

TITLE:		10" X 11' HELICAL LEAD, TRIPLE 20" FLIGHTS	
SIZE	DRAWING NO.	REV	
B	1008-0050-0053	0	
SCALE:	1:24	WEIGHT:	548.86 lbs.
		SHEET 1 OF 1	