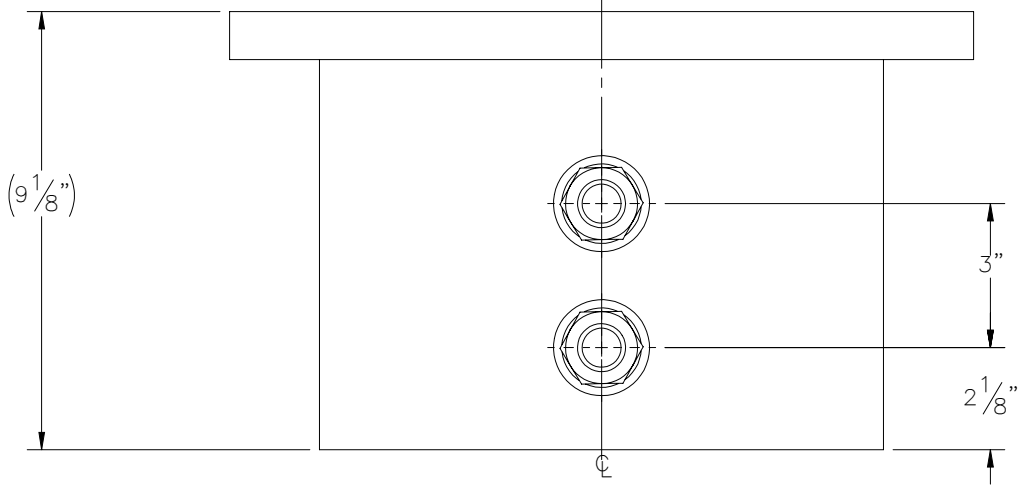
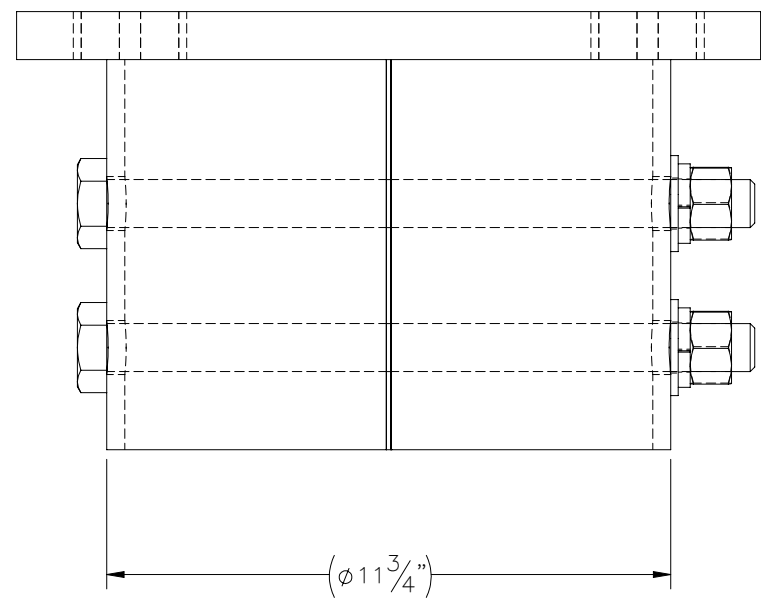
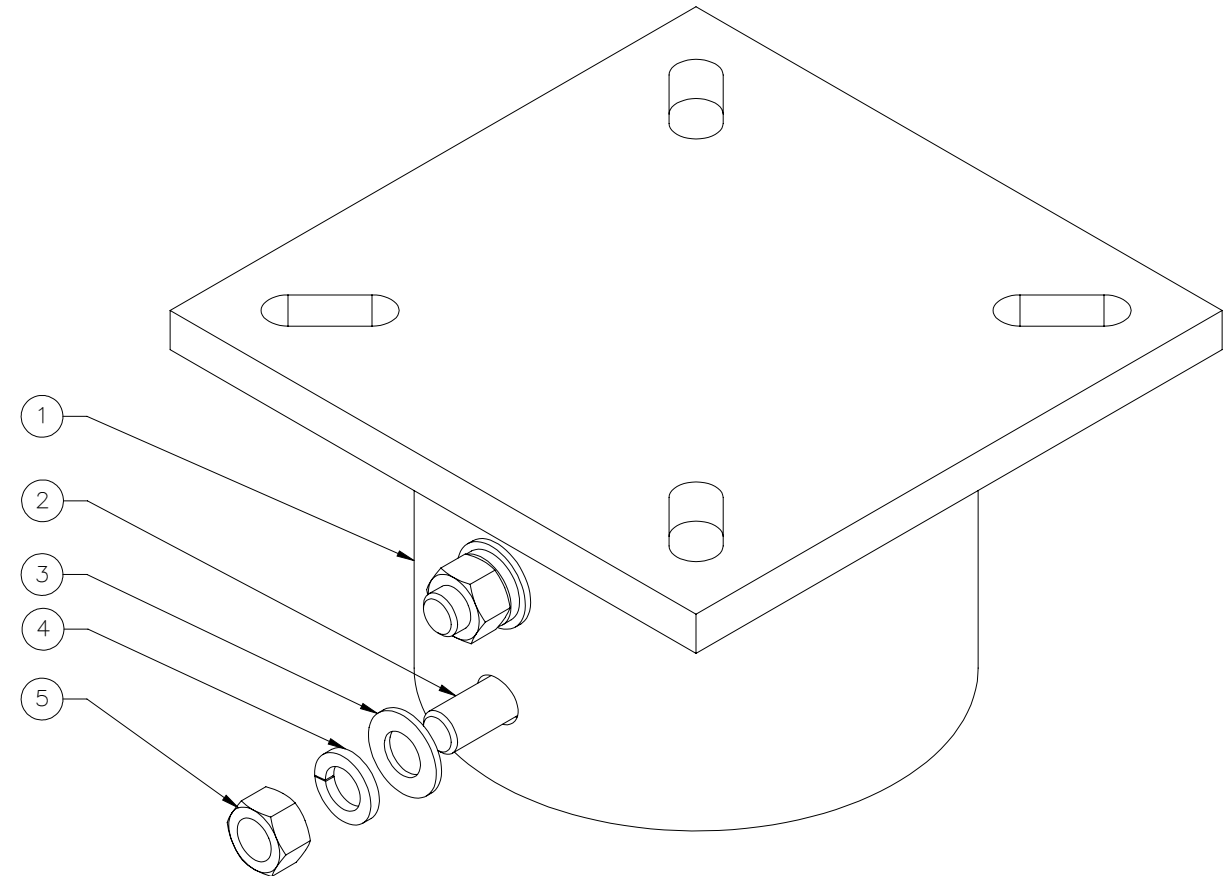
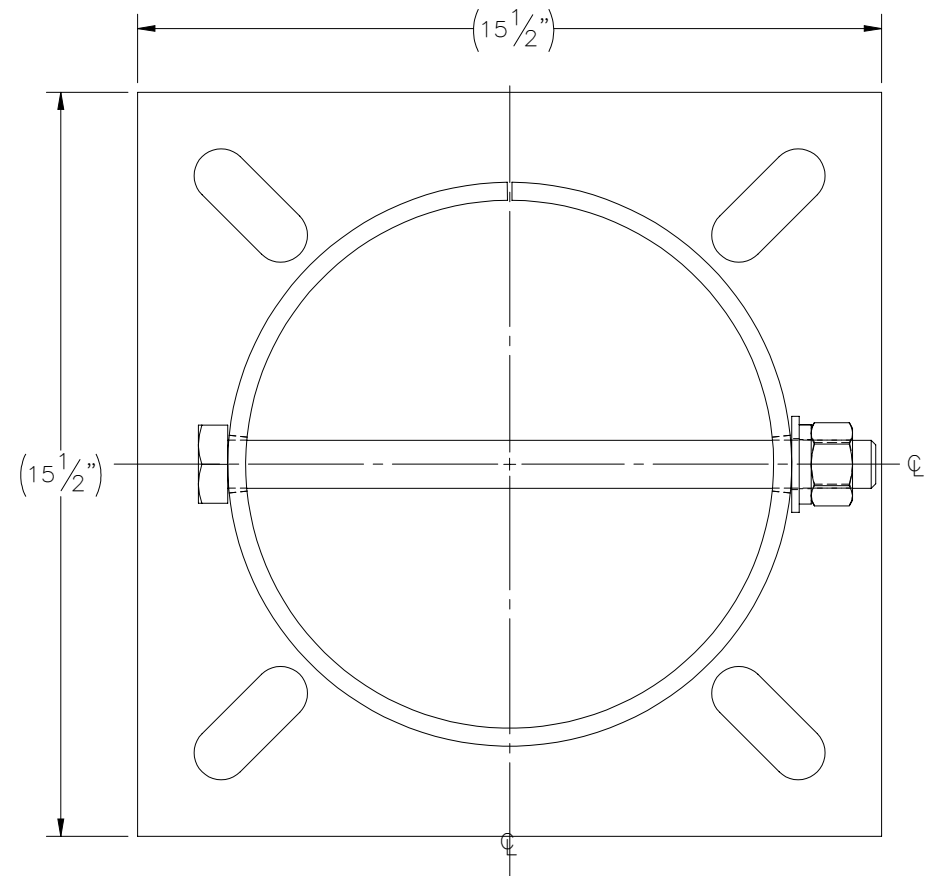

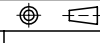


THE INFORMATION CONTAINED IN THIS DRAWING IS THE SOLE PROPERTY OF ELECTRO MECHANICAL INDUSTRIES, INC. ANY REPRODUCTION IN PART OR WHOLE WITHOUT THE WRITTEN PERMISSION OF ELECTRO MECHANICAL IND., IS PROHIBITED.



ITEM NO.	QTY REQD	PART NUMBER	DESCRIPTION	LENGTH	WEIGHT
1	1	W-002-786	HELICAL CAP WELDMENT 10"		95.12
2	2	002-0BG-0339	BOLT, HH, 1.00-8 X 13.50, GALV, A325, PT X 1.75	13 1/2"	3.4058
3	2	002-0FW-G009	WASHER, FLAT, 1.00, GALV, F436		0.10
4	2	002-0LW-G008	WASHER, SPLIT LOCK, 1.00, GALV		0.09
5	2	002-0NG-0008	NUT, HEX, 1.00-8, GALV, GR 2H		0.282

SURFACE FINISH <input checked="" type="checkbox"/> UNLESS OTHERWISE SPECIFIED		UNLESS OTHERWISE SPECIFIED DIMENSIONS ARE IN INCHES		APPROVALS		DATE		 ELECTRO MECHANICAL INDUSTRIES, INC. 11230 NEESESHAW DRIVE HOUSTON, TEXAS 77065 1-800-453-0050	
MATERIAL SEE PARTS LIST		TOLERANCES		DRAWN H. MAUERMANN		1/17/2024			
THIRD ANGLE PROJECTION 		.0 ±.06		CHECKER J. Breen		1/17/2024		TITLE: <h3>10" HELICAL CAP</h3>	
NEXT ASSY USED ON		.000 ±.005		ENGINEER J. Breen		1/17/2024			
APPLICATIONS		FRACTIONS ± 1/16		PRODUCTION J. KERNER		1/17/2024		SIZE <b>B</b> DRAWING NO. 1007-0000-0047 REV 0	
		ANGLES ±.25°		SCALE: 1:8		WEIGHT: 102.88 lbs.		SHEET 1 OF 1	
		HOLES: DRILLED OR PUNCHED ± 1/32							
		BURNED ± 1/32							