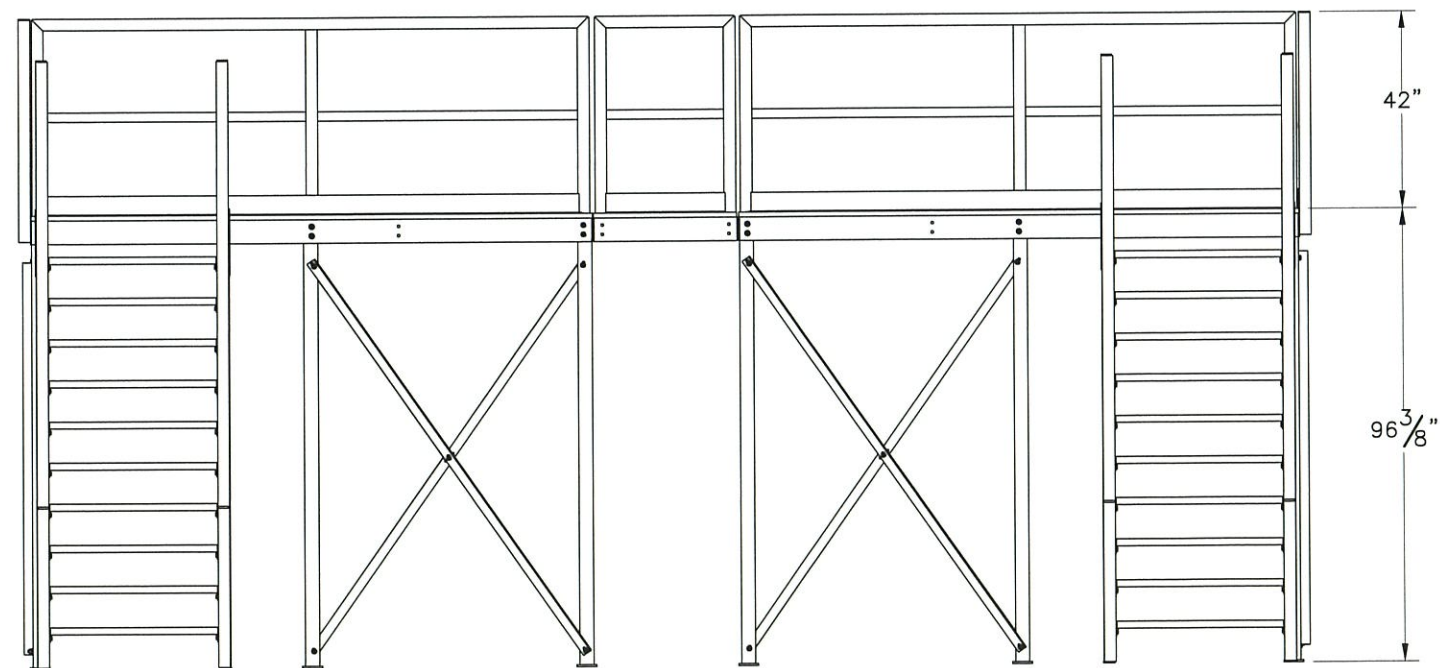
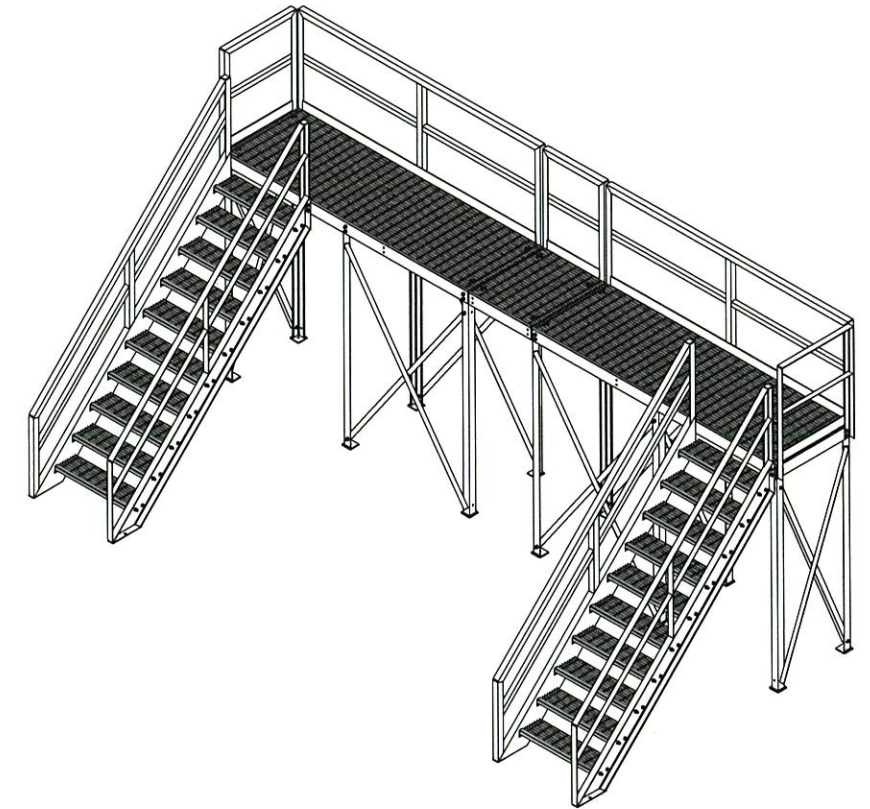
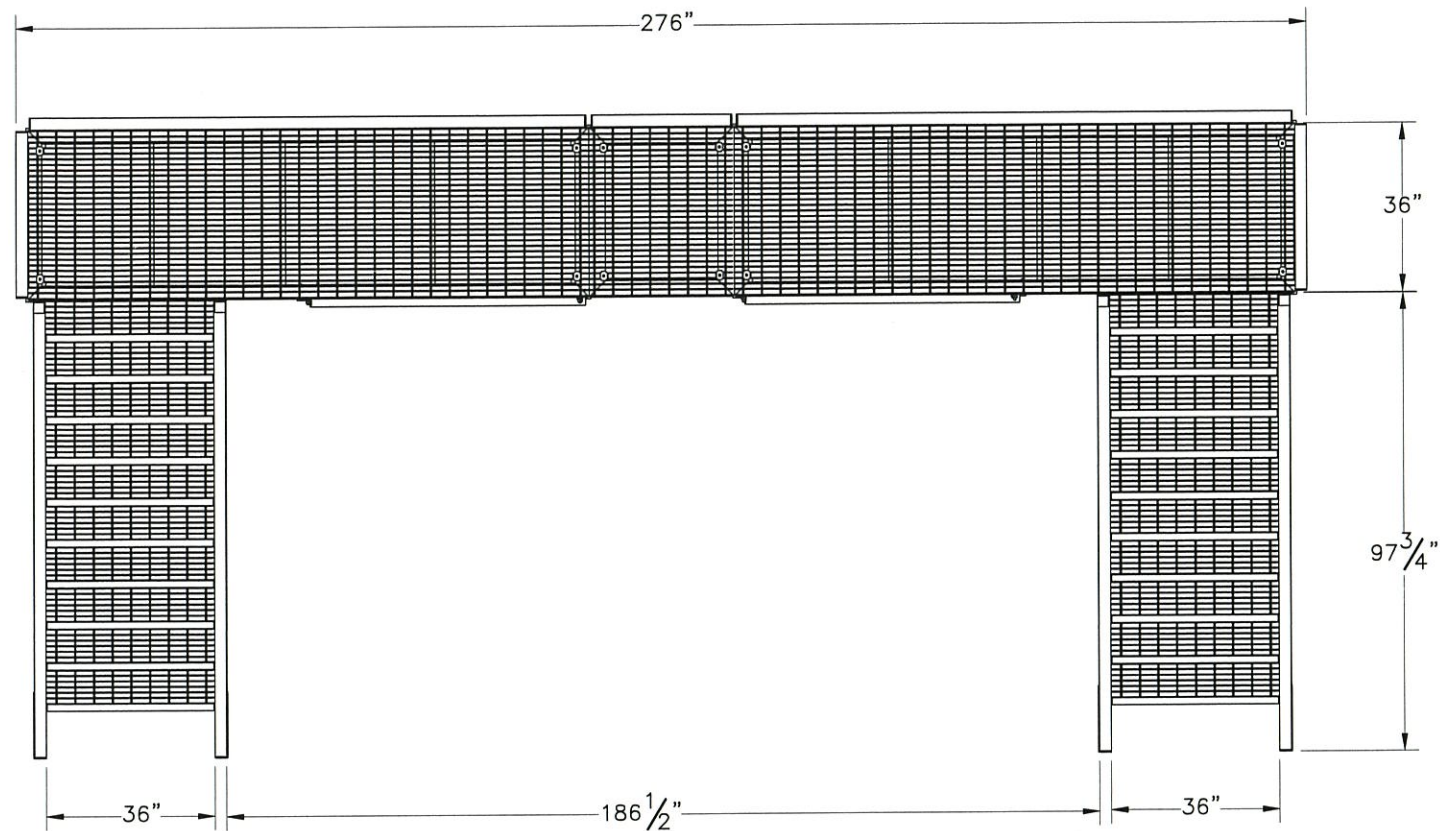

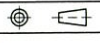


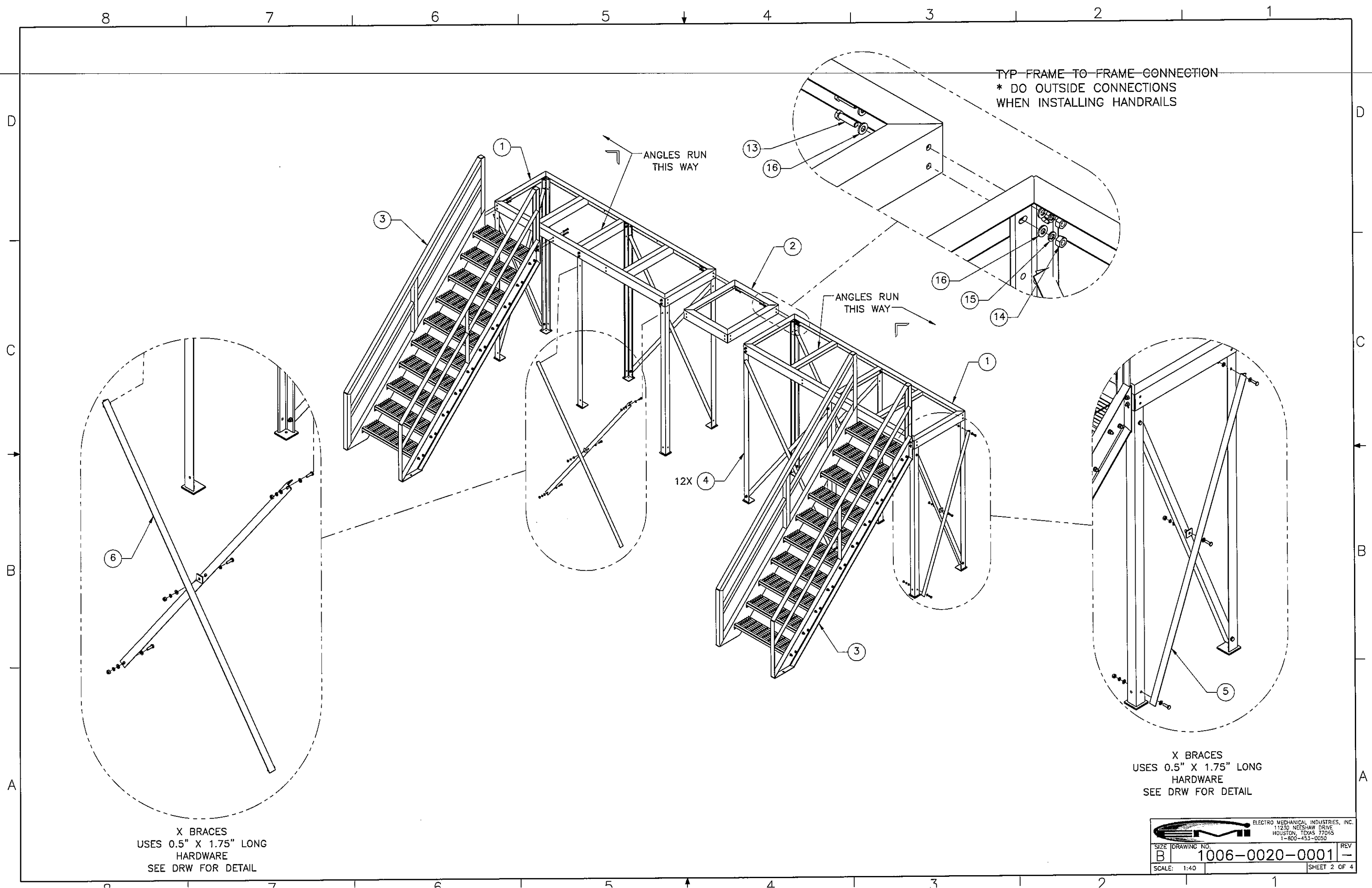
THE INFORMATION CONTAINED IN THIS DRAWING IS THE SOLE PROPERTY OF ELECTRO MECHANICAL INDUSTRIES, INC. ANY REPRODUCTION IN PART OR WHOLE WITHOUT THE WRITTEN PERMISSION OF ELECTRO MECHANICAL IND., IS PROHIBITED.



ITEM NO.	QTY	PART NUMBER	DESCRIPTION	WEIGHT
1	2	W-000-700	CATWALK FRAME WELDMENT 36.25" X 120"	223.82
2	1	W-000-982	CATWALK FRAME WELDMENT 36.25" X 31"	74.85
3	2	450-000-0172	7' STAIR ASSEMBLY (36" WIDE)	824.3
4	12	W-000-623	CATWALK LEG WELDMENT, 96"	57.54
5	2	A-000-135	X BRACE ASSEMBLY	48.6
6	4	A-000-136	X BRACE ASSEMBLY	55.2
7	2	450-000-0703-1196	GRATING PANEL, 36" X 119-3/4"	208.67
8	1	450-000-0703-0304	GRATING PANEL, 36" X 30.5"	53.30
9	12	000-MSG-0008	GRATING CLIP, 1", GALV.	0.21
10	2	450-000-0601-1190	HANDRAIL, 119"	149.2
11	2	450-000-0601-0354	HANDRAIL, 35-1/2"	60.2
12	1	450-000-0601-0300	HANDRAIL, 30"	55.5
13	56	002-0BG-0049	BOLT, HX HD, .500-13UNC, 2.00 LG, GR 5, GALV	0.15
14	56	002-0NG-0010	NUT, HEX, .500-13UNC, GR 2H, GALV	0.06
15	56	002-0LW-G002	WASHER, SPLIT LOCK, .500", GALV	0.01
16	112	002-0FW-G002	WASHER, FLAT, .500", F436, GALV	0.02

SURFACE FINISH <input checked="" type="checkbox"/> UNLESS OTHERWISE SPECIFIED		UNLESS OTHERWISE SPECIFIED DIMENSIONS ARE IN INCHES		APPROVALS	DATE	 ELECTRO MECHANICAL INDUSTRIES, INC. 11230 NEESEHAW DRIVE HOUSTON, TEXAS 77065 1-800-453-0050
MATERIAL	SEE PARTS LIST	TOLERANCES		DRAWN	7.27.18	
THIRD ANGLE PROJECTION		.0 ±.06 .00 ±.01 .000 ±.005		CHECKED	3/7/19	TITLE: 23' ELEVATED CATWALK
		FRACTIONS ± 1/16 ANGLES ± .25°		ENGINEER/DESIGNER	3/7/19	
		HOLES: DRILLED OR PUNCHED +1/32 BURNED ±1/32		PRODUCTION	JKS 3-7-19	
NEXT ASSY	USED ON	APPLICATIONS		SIZE B DRAWING NO. 1006-0020-0001 SCALE: 1:40 WEIGHT: 3663 lbs. SHEET 1 OF 4		REV -

NOTE: INCLUDE 5 EXTRA SETS OF HARDWARE ITEMS #13-#16



8 7 6 5 4 3 2 1

D

D

C

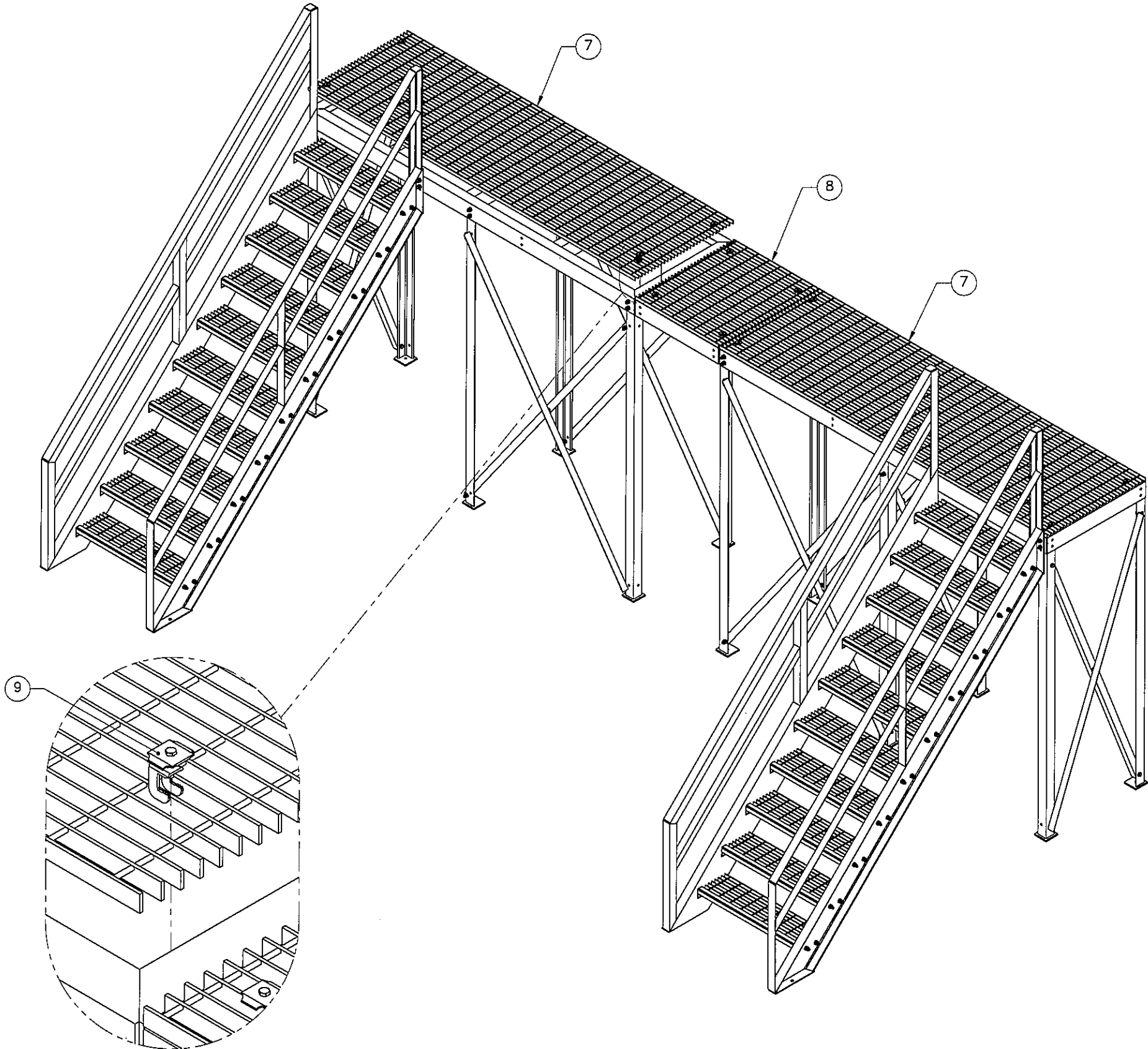
C

B


B

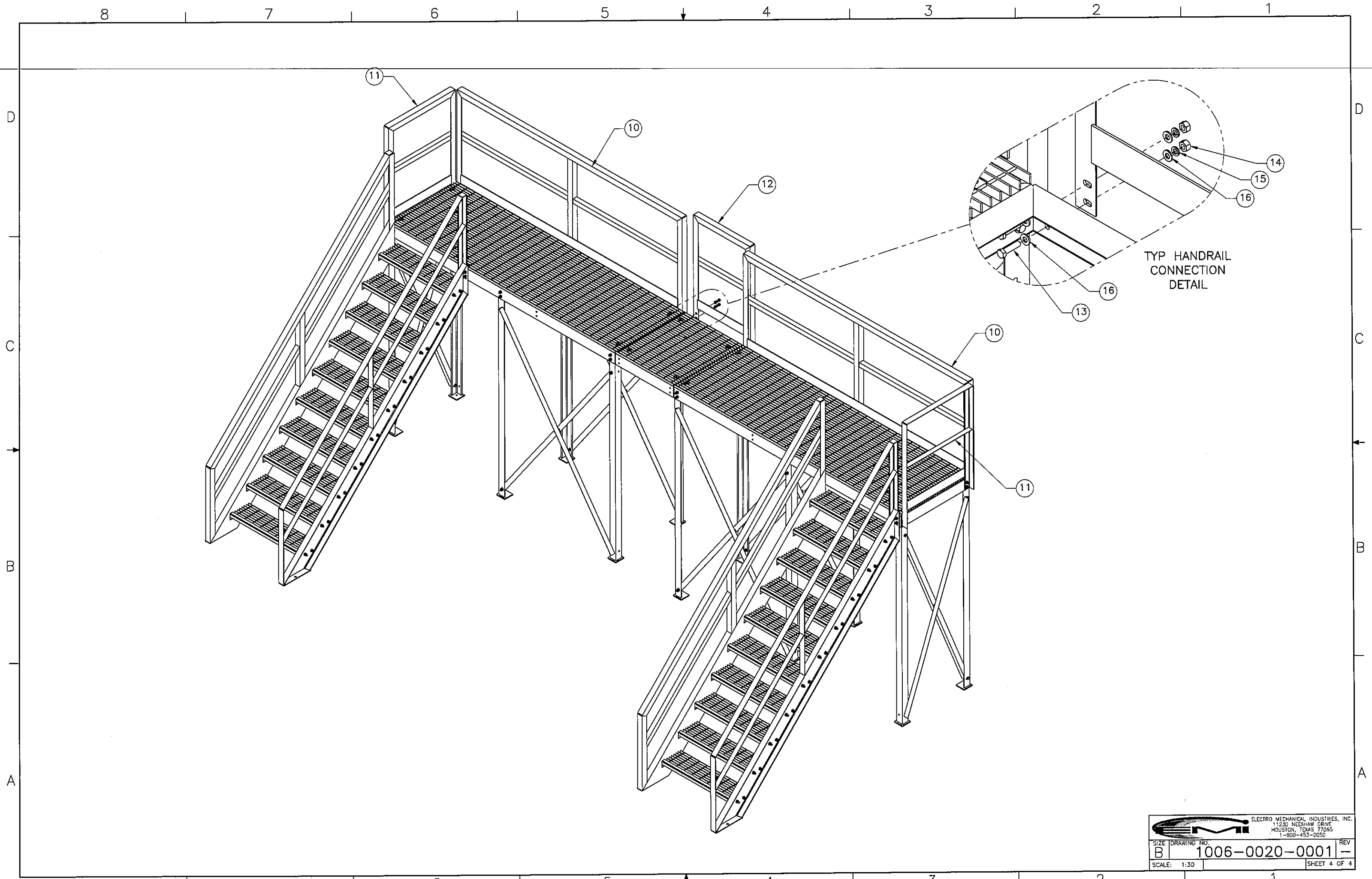
A


A



TYP
GRATING CLIP DETAIL
4X PER PANEL

		ELECTRO MECHANICAL INDUSTRIES, INC. 11230 NEESHAW DRIVE HOUSTON, TEXAS 77065 1-800-453-0050	
SIZE	DRAWING NO.	REV	
B	1006-0020-0001	-	
SCALE:	1:30		SHEET 3 OF 4



		ELECTRO MECHANICAL INDUSTRIES, INC. 11230 NEESHAW DRIVE HOUSTON, TEXAS 77065 1-800-453-0050	
SIZE	DRAWING NO.	REV	
B	1006-0020-0001	-	
SCALE: 1:30			SHEET 4 OF 4