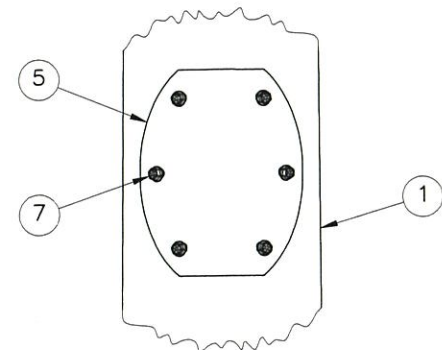
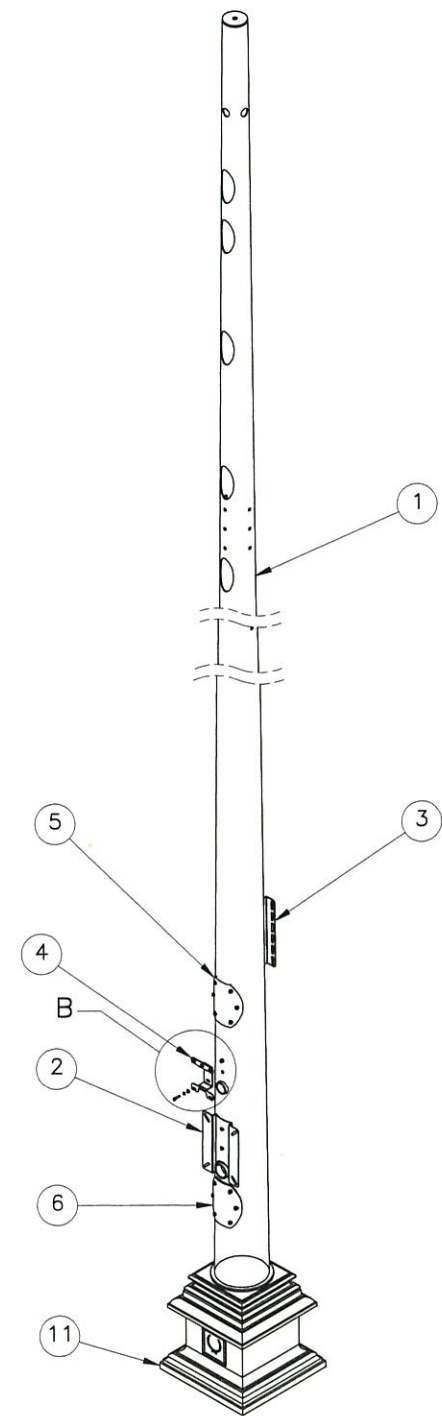
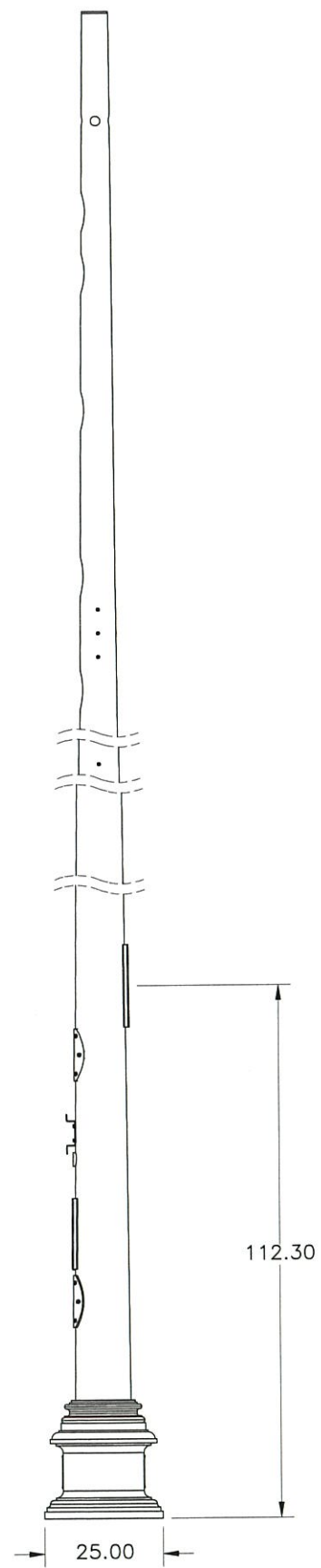
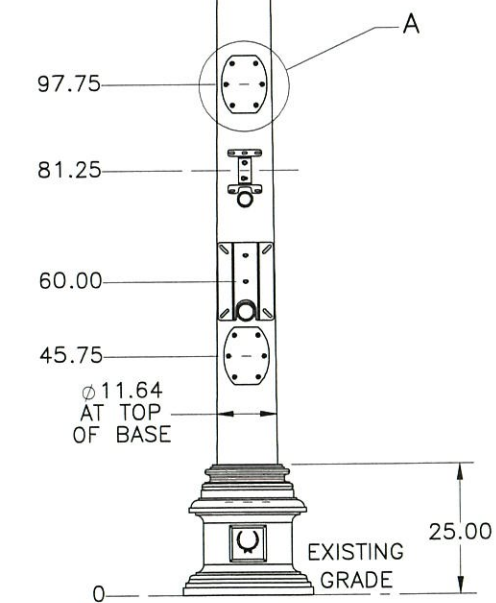
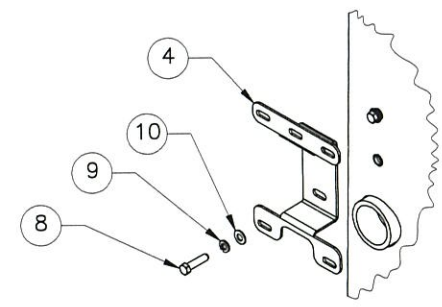


THE INFORMATION CONTAINED IN THIS DRAWING IS THE SOLE PROPERTY OF ELECTRO MECHANICAL INDUSTRIES, INC. ANY REPRODUCTION IN PART OR WHOLE WITHOUT THE WRITTEN PERMISSION OF ELECTRO MECHANICAL IND., IS PROHIBITED.

433.63


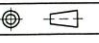





DETAIL A
TYP. HAND HOLE
WITH COVER



DETAIL B
TYP. HAT
CONNECTION

ITEM NO.	QTY REQD	PART NUMBER	DESCRIPTION	LENGTH	WEIGHT
1	1	1002-0000-0021	BARE MONOPOLE		688.73
2	1	P-003-311	EQUIPMENT HAT, METER ENCLOSURE, 10" PIPE		6.45
3	1	P-003-310	EQUIPMENT HAT, CHARLES FIBER ENCLOSURE, 10" PIPE		6.23
4	1	P-003-179	EQUIPMENT HAT, LOAD CENTER		1.3
5	1	P-003-524	HAND HOLE COVER PLATE, INSIDE RADIUS		9.13
6	2	P-003-525	HAND HOLE COVER PLATE, INSIDE RADIUS		9.00
7	18	002-0BF-Z001	FLANGED BOLT, .375-16 x 1.50 LG, FULL THD, GR 5, ZINC NICKEL PLTD		0.07
8	6	002-0BZ-0052	BOLT, HEX, .375-16X 1.5 LG, GR 5, ZINC		0.01
9	6	002-0LW-G005	WASHER, SPLIT LOCK, .375 INCH, GALV		0.01
10	6	002-0FW-G005	WASHER, FLAT, .375, GALV		0.01
11	1	602-009-0003	WASHINGTON DC CLAM SHELL STYLE BASE		

SURFACE FINISH <input checked="" type="checkbox"/> UNLESS OTHERWISE SPECIFIED		UNLESS OTHERWISE SPECIFIED DIMENSIONS ARE IN INCHES		APPROVALS		DATE		 ELECTRO MECHANICAL INDUSTRIES, INC. 11230 NEECHAW DRIVE HOUSTON, TEXAS 77065 1-800-453-0050	
MATERIAL SEE PARTS LIST		TOLERANCES .0 ±.06 .00 ±.015 .000 ±.005		DRAWN B. HUTSON		2019-11-19		TITLE: 36' TAPERED MONOPOLE TOWER	
THIRD ANGLE PROJECTION 		FRACTIONS ± 1/16		CHECKED 		11.19.19		ENGINEER/DESIGNER 	
NEXT ASSY USED ON		ANGLES ± .25°		PRODUCTION 		11-19-19		SIZE B DRAWING NO. 1002-0060-0009	
APPLICATIONS		HOLES: DRILLED OR PUNCHED +1/32 BURNED ±1/32		SCALE: 1:48		WEIGHT: 757.67 lbs.		REV SHEET 1 OF 1	