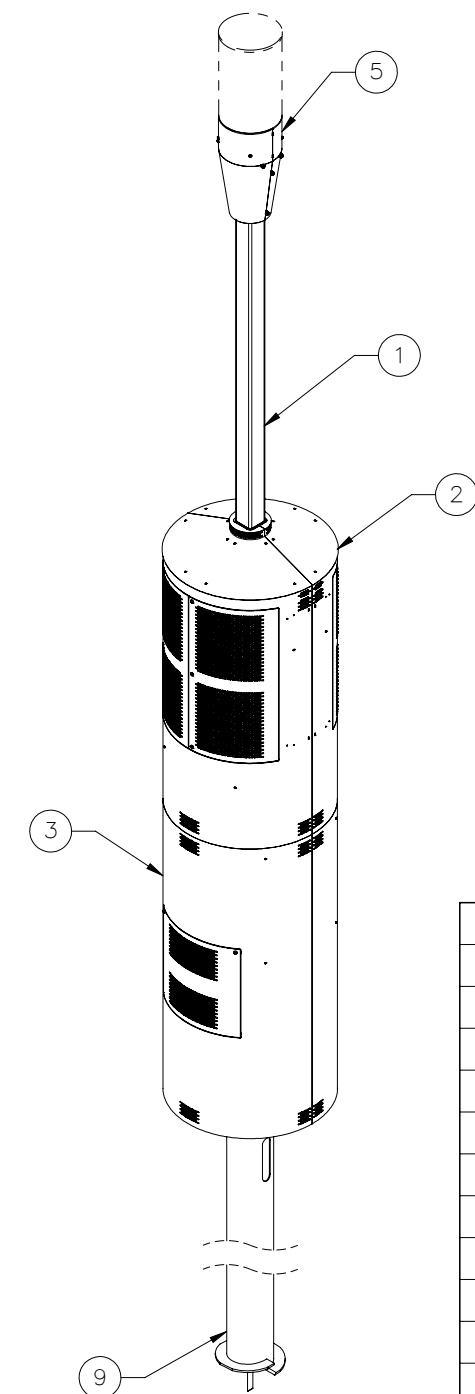
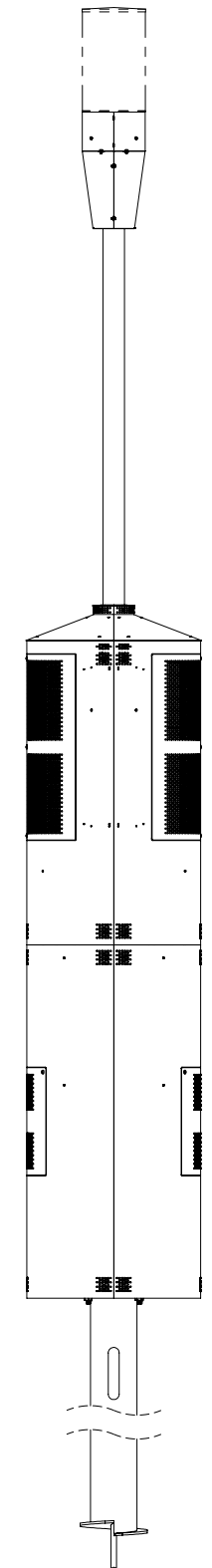
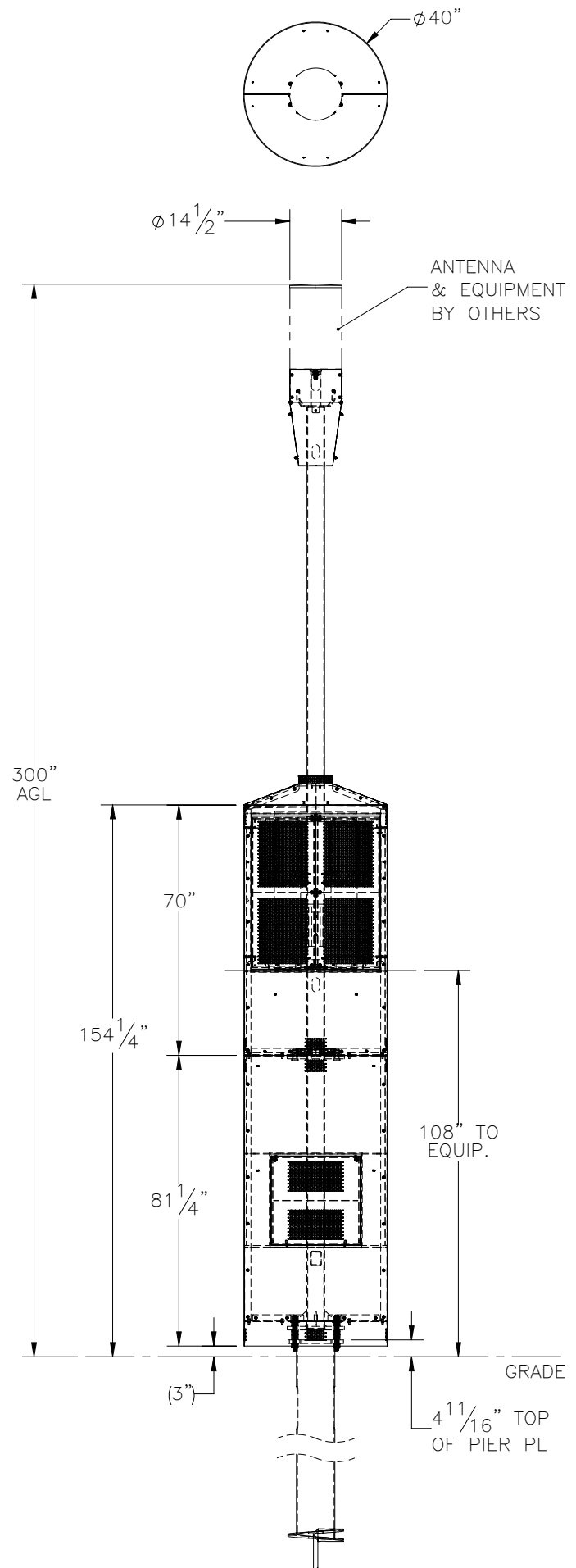

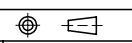


THE INFORMATION CONTAINED IN THIS DRAWING IS THE SOLE PROPERTY OF ELECTRO MECHANICAL INDUSTRIES, INC. ANY REPRODUCTION IN PART OR WHOLE WITHOUT THE WRITTEN PERMISSION OF ELECTRO MECHANICAL IND., IS PROHIBITED.



ITEM NO.	QTY	PART NUMBER	DESCRIPTION	LENGTH	WEIGHT
1	1	W-002-696	VS MAST WELDMENT, 108" EQUIP. HT.		469.2
2	1	1018-0020-0013	VS SHROUD CABINET		464.73
3	1	1018-0020-0014	VS SHROUD CABINET SPACER		453.23
4	1	P-006-970	SPIDER PLATE		3.6
5	1	A-000-761	VS UPPER SHROUD ASSEMBLY		16.19
6	1	A-000-762	EQUIPMENT MOUNT KIT, NEXT GEN RU		2.35
7	1	A-000-763	EQUIPMENT MOUNT ASS'Y, JMA RU (2)		14.62
8	1	A-000-764	AIR CONDUIT MOUNT ASS'Y		32.19
9	1	400-000-1001	10" X 10', 1" BASE, 1" HDW. - HELICAL PIER		347
10	4	002-0AT-G003	ROD, THREADED 1.00"-8 X 10" LG, ASTM A193 B7, GALV	10"	1.78
11	8	002-0NG-0000	NUT, HX, ANCO LOCK, 1.00-8UNC, GR 2H, GALV		0.43
12	12	002-0NG-0008	NUT, HX, 1.00"-8UNC, GR 2H, GALV		0.42
13	8	002-0LW-G008	WASHER, SPLIT LOCK, 1.00, GALV		0.09
14	8	002-0FW-G042	WASHER, FLAT, 1.00, GALV, USS		0.19
15	16	002-0FW-G009	WASHER, FLAT, 1.00, GALV, F436		0.10
16	1	002-0BG-0337	BOLT, HH, .250-20 X 6.50, GALV, GR 5, PT X 1.00	6 1/2"	0.098
17	4	002-0BG-0016	BOLT, HH, .250-20 X .750, GALV, A307, FT	.75	0.018
18	1	002-0NG-0014	NUT, HEX, .250-20, GALV, GR 2H		0.007
19	1	002-0LW-G009	WASHER, SPLIT LOCK, .250, GALV		0.002
20	6	002-0FW-G034	WASHER, FLAT, .250, GALV, SAE		0.005

SURFACE FINISH <input checked="" type="checkbox"/> UNLESS OTHERWISE SPECIFIED		UNLESS OTHERWISE SPECIFIED DIMENSIONS ARE IN INCHES		APPROVALS		DATE		 ELECTRO MECHANICAL INDUSTRIES, INC. 1230 NEESESHAW DRIVE HOUSTON, TEXAS 77065 1-800-453-0050	
MATERIAL SEE PARTS LIST		TOLERANCES .0 ±.06 .00 ±.015 .000 ±.005 FRACTIONS ± 1/16 ANGLES ± .25° HOLES: DRILLED OR PUNCHED ± 1/32 BURNED ± 1/32		DRAWN C. SANCHEZ		11/7/2023		TITLE: VS CONCEALMENT TOWER WITH RAISED SHROUD	
THIRD ANGLE PROJECTION 				CHECKER J. ROACH		11/20/2023		SIZE B	
NEXT ASSY		USED ON		ENGINEER J. Breen		11/22/2023		DRAWING NO. 1002-0040-0061	
APPLICATIONS				PRODUCTION J. KERNER		11/22/2023		REV 0	
				SCALE: 1:44		WEIGHT: 1822.5 lbs.		SHEET 1 OF 3	

