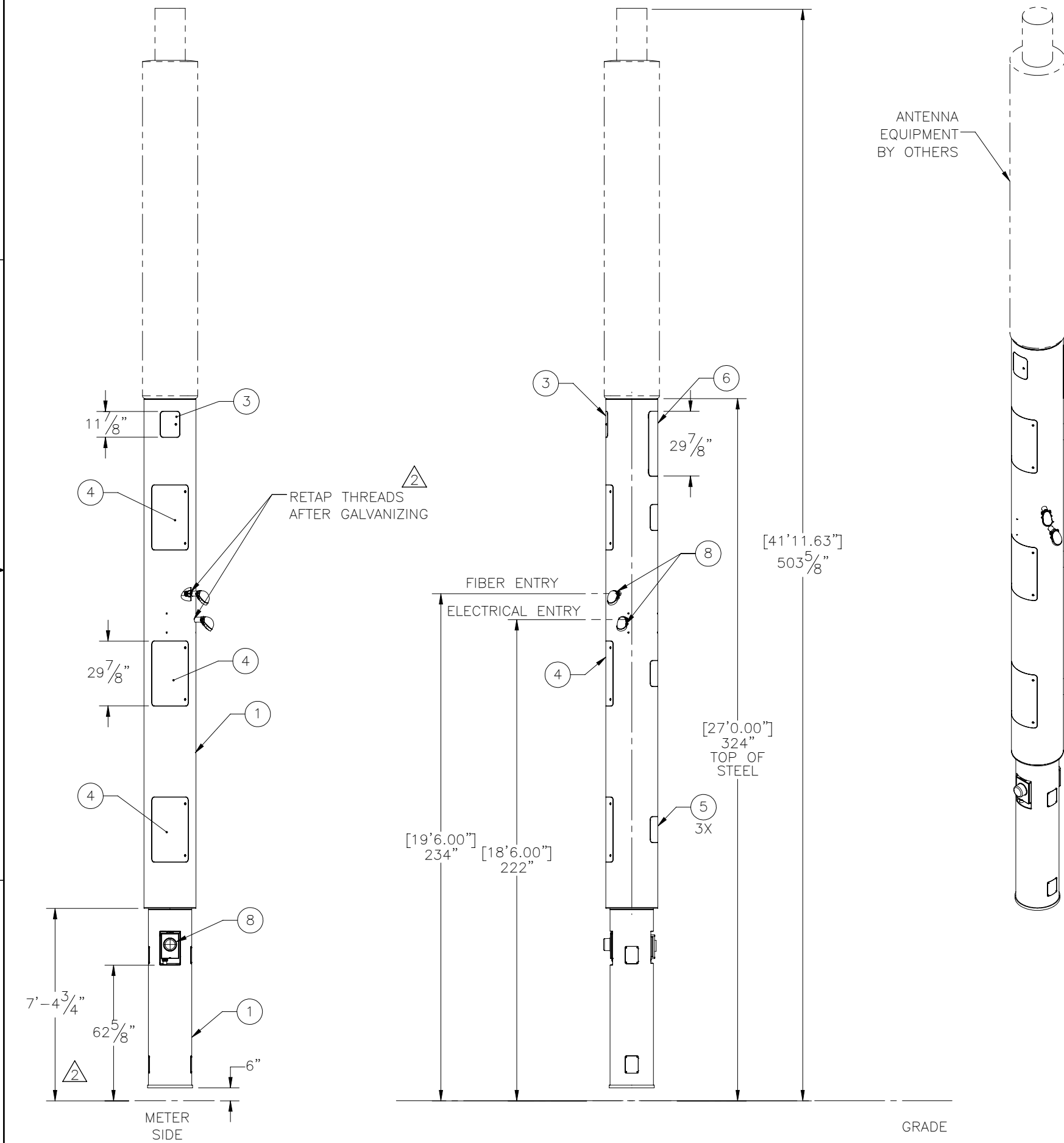

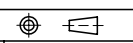


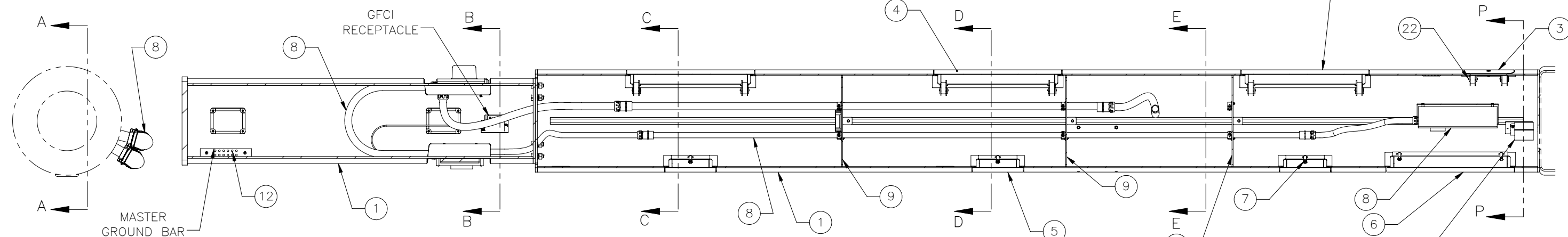
THE INFORMATION CONTAINED IN THIS DRAWING IS THE SOLE PROPERTY OF ELECTRO MECHANICAL INDUSTRIES, INC. ANY REPRODUCTION IN PART OR WHOLE WITHOUT THE WRITTEN PERMISSION OF ELECTRO MECHANICAL IND., IS PROHIBITED.

REVISIONS					
REV.	DCN #	DESCRIPTION	DATE	BY	APPROVED
2	01279	UPDATED DOOR HINGES, DOOR WELDMENTS, & ELECTRICAL KIT UPDATE DIMENSION	12.29.23	CS	JPB

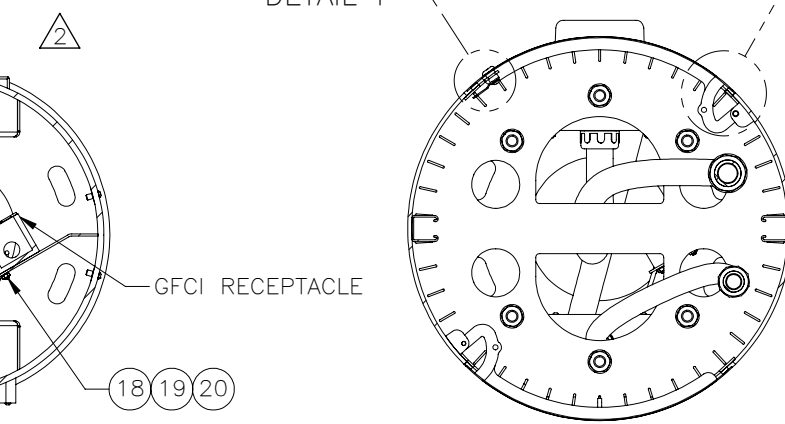
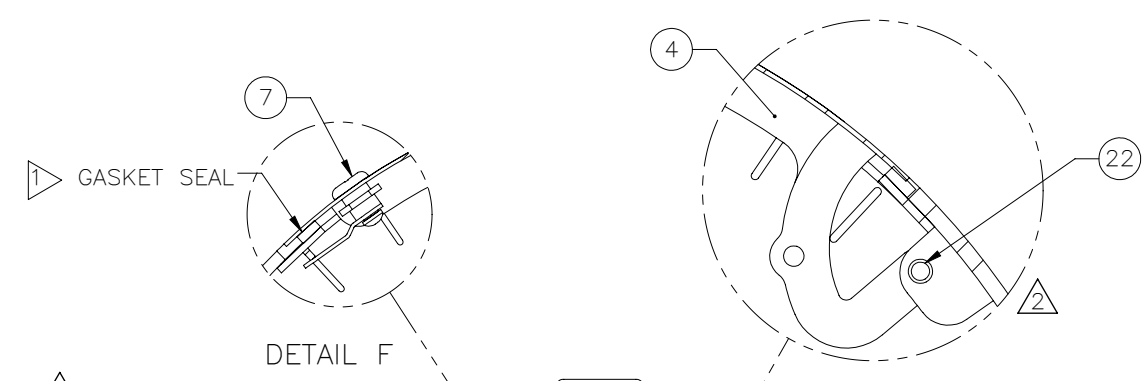


ITEM NO.	QTY REQD	PART NUMBER	DESCRIPTION	LENGTH	WEIGHT
1	1	1002-0000-0082	BASE, 20" DIA. X 6'-6" TALL		631.48
1	1	W-002-556	BARE MONOPOLE WELDMENT, 24" DIA.		1216.22
3	1	W-002-754	DOOR WELDMENT		3.16
4	3	W-002-756	DOOR WELDMENT		12.79
5	3	W-002-758	DOOR WELDMENT		5.80
6	1	W-002-763	DOOR WELDMENT		14.21
7	12	A-000-774	CAM LOCK ASSEMBLY, W KC443 CAM		0.14
8	1	A-000-709	MULTI CARRIER TOWER ELECTRICAL KIT		65.05
9	3	P-006-670	INTERNAL DIVIDING PLATE		20.78
10	1	P-007-107	EQUIPMENT HAT		18.12
11	6	P-007-166	CONDUIT CLAMP BRACKET		0.04
12	1	170-ELC-0039	<b>GROUND BAR WITH BRACKET, .25" X 2" X 12"</b>		1.93
13	3	002-0LC-0005	<b>CLAMPING HANGER, 1" PIPE, ZNP</b>		0.104
14	3	002-0LC-0006	<b>CLAMPING HANGER, 1.25" PIPE, ZNP</b>		0.122
15	10	002-SNG-0000	STRUT CHAN. SPRING NUT, 1/4"-20 X 1 5/8", ZINC		0.11
16	2	002-0BG-0234	BOLT, HH, .250-20 X 1.00, GALV, A307, FT	1"	0.0219
17	10	002-0BZ-0338	BOLT, HH, .250-20 X 1.25, ZNP, GR 5, PT X .750	1 1/4"	0.0244
18	16	002-0BG-0016	BOLT, HH, .250-20 X .750, GALV, A307, FT	.75	0.018
19	18	002-0NG-0014	NUT, HEX, .250-20, GALV, GR 2H		0.007
20	28	002-0LW-G009	WASHER, SPLIT LOCK, .250, GALV		0.002
21	10	002-0FW-G034	WASHER, FLAT, .250, GALV, SAE		0.005
22	16	002-00C-0015	PIN, CLEVIS, .250 D X 1.813 USABLE, ZNP	2"	0.03
23	8	002-0FM-A004	.188" X .50" STRIP GASKET, CLOSED CELL FOAM, ADHESIVE BACKED	27"	0.12
24	2	002-0FM-A004	.188" X .50" STRIP GASKET, CLOSED CELL FOAM, ADHESIVE BACKED	18 1/8"	0.08
25	12	002-0FM-A004	.188" X .50" STRIP GASKET, CLOSED CELL FOAM, ADHESIVE BACKED	16 1/16"	0.07
26	8	002-0FM-A004	.188" X .50" STRIP GASKET, CLOSED CELL FOAM, ADHESIVE BACKED	9"	0.04
27	2	002-0FM-A004	.188" X .50" STRIP GASKET, CLOSED CELL FOAM, ADHESIVE BACKED	6 3/4"	0.03

SURFACE FINISH <input checked="" type="checkbox"/> UNLESS OTHERWISE SPECIFIED		UNLESS OTHERWISE SPECIFIED DIMENSIONS ARE IN INCHES		APPROVALS		DATE		 ELECTRO MECHANICAL INDUSTRIES, INC. 11230 NEESEHAW DRIVE HOUSTON, TEXAS 77065 1-800-453-0050	
MATERIAL SEE PARTS LIST		TOLERANCES .0 ± .06 .00 ± .015 .000 ± .005 FRACTIONS ± 1/16 ANGLES ± .25° HOLES: DRILLED OR PUNCHED ± 1/32 BURNED ± 1/32		DRAWN B. HUTSON		4/4/2023		TITLE: <b>20" DIA. BASE, 24" DIA. EQUIPMENT SECTION</b>	
THIRD ANGLE PROJECTION 				CHECKER J. ROACH		4/4/2023		SIZE <b>B</b> DRAWING NO. 1002-0040-0058 REV 2	
NEXT ASSY		USED ON		ENGINEER J. Breen		4/5/2023		SCALE: 1:256 WEIGHT: 2075.53 lbs. SHEET 1 OF 2	
APPLICATIONS				PRODUCTION J. KERNER		4/5/2023			

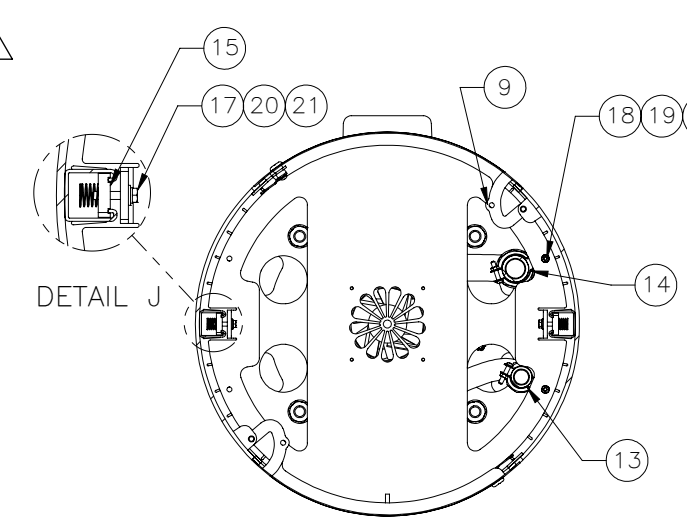


SECTION A-A



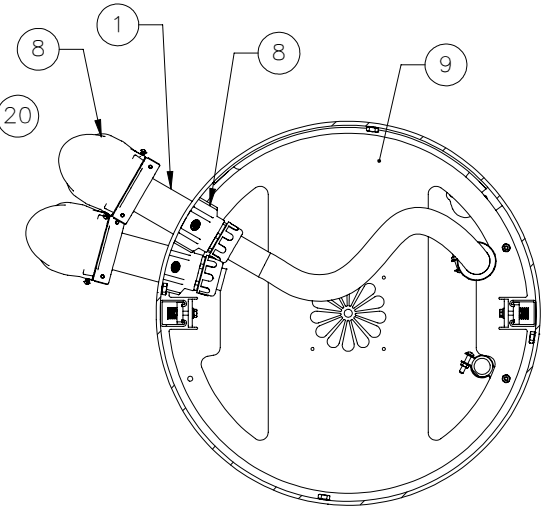
SECTION B-B

SECTION C-C

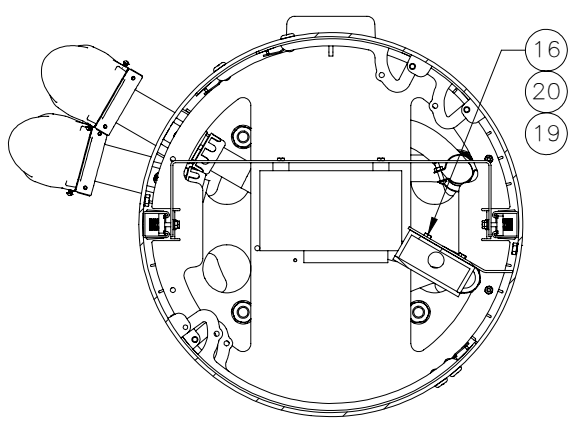


DETAIL J

SECTION D-D



SECTION E-E



SECTION P-P

GASKET ITEMS (23), (24), (25), (26), (27) CUT AS NEEDED TO FIT DOOR FRAME OPENING.

		ELECTRO MECHANICAL INDUSTRIES, INC. 11230 NEESHAW DRIVE HOUSTON, TEXAS 77065 1-800-453-0050	
SIZE	DRAWING NO.	REV	
B	1002-0040-0058	2	
SCALE: 1:60			SHEET 2 OF 2