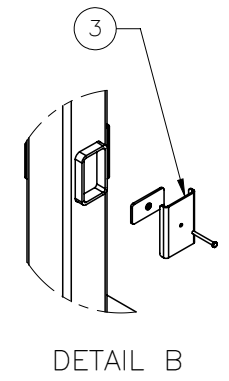
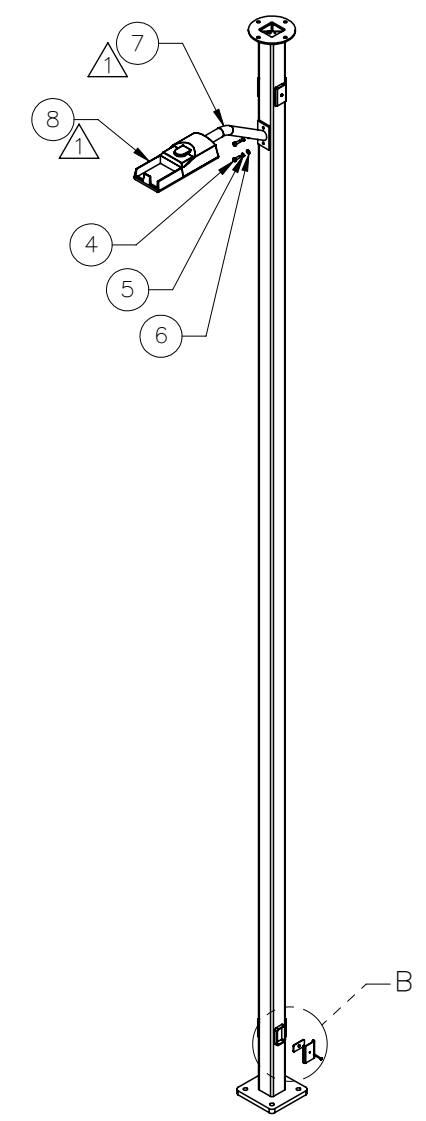
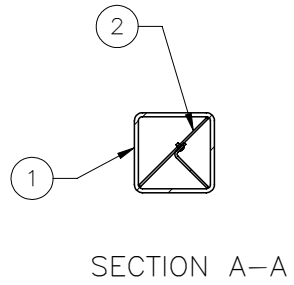
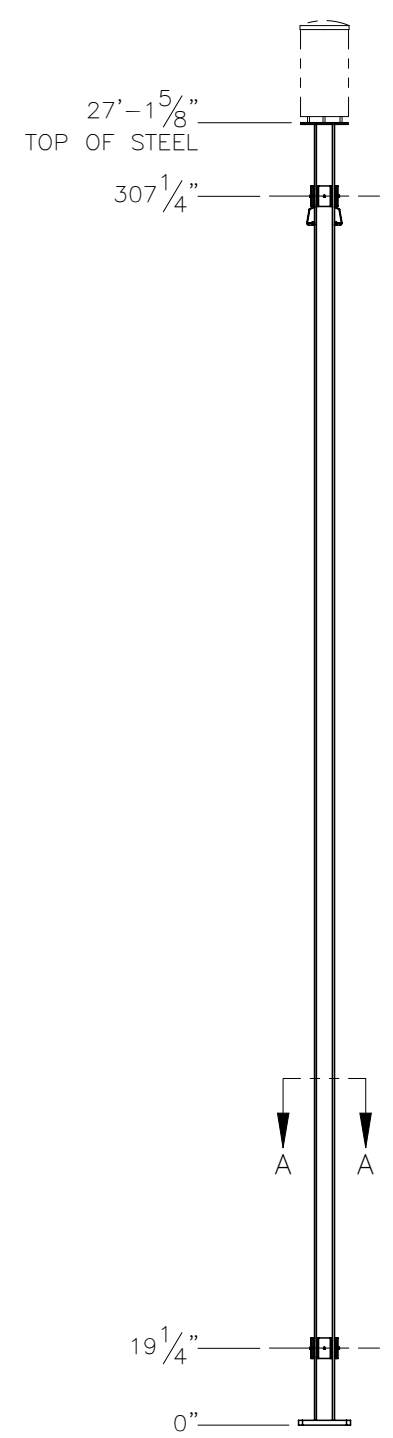

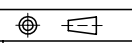


THE INFORMATION CONTAINED IN THIS DRAWING IS THE SOLE PROPERTY OF ELECTRO MECHANICAL INDUSTRIES, INC. ANY REPRODUCTION IN PART OR WHOLE WITHOUT THE WRITTEN PERMISSION OF ELECTRO MECHANICAL IND., IS PROHIBITED.

REVISIONS					
REV.	DCN #	DESCRIPTION	DATE	BY	APPROVED
1	01168	ADDED LIGHT ARM WELDMENT	08/01/2022	BLH	JPB



ITEM NO.	QTY REQD	PART NUMBER	DESCRIPTION	LENGTH	WEIGHT
1	1	1002-0000-0071	27'-1.63" BARE MONOPOLE MAST, SQ TBG		480.57
2	1	A-000-605	KIT, DIVIDER FOR TRI-CHAMBERED POLE		121.40
3	6	1000-0020-0106	3" X 5" HANDHOLE COVER KIT		1.33
4	2	002-0BG-0012	BOLT, HX HD, .500-13UNC X 1.75 LG, ASTM A325, GALV		0.2
5	2	002-0LW-G002	WASHER, SPLIT LOCK, .500", GALV		0.01
6	2	002-0FW-G002	FW, .50, F436, HDG		0.02
7	1	W-002-429	LIGHT ARM WELDMNT		
8	1	170-LTG-0013	EATON LED, CLV00171180M LIGHT		

SURFACE FINISH <input checked="" type="checkbox"/> UNLESS OTHERWISE SPECIFIED		UNLESS OTHERWISE SPECIFIED DIMENSIONS ARE IN INCHES		APPROVALS		DATE		 ELECTRO MECHANICAL INDUSTRIES, INC. 11230 NEESESHAW DRIVE HOUSTON, TEXAS 77065 1-800-453-0050	
MATERIAL SEE PARTS LIST		TOLERANCES .0 ±.06 .00 ±.015 .000 ±.005		DRAWN B. HUTSON		6/9/2022			
THIRD ANGLE PROJECTION 		FRACTIONS ± 1/16		CHECKER J. ROACH		6/9/2022		TITLE: <b>TRI-CHAMBERED POLE</b>	
NEXT ASSY USED ON		ANGLES ± .25°		ENGINEER J. Breen		6/10/2022			
APPLICATIONS		HOLES: DRILLED OR PUNCHED ± 1/32		PRODUCTION J. LEE		7/22/2022		SIZE <b>B</b> DRAWING NO. 1002-0020-0097 REV 1	
		BURNED ± 1/32		SCALE: 1:4		WEIGHT: 639.15 lbs.		SHEET 1 OF 1	