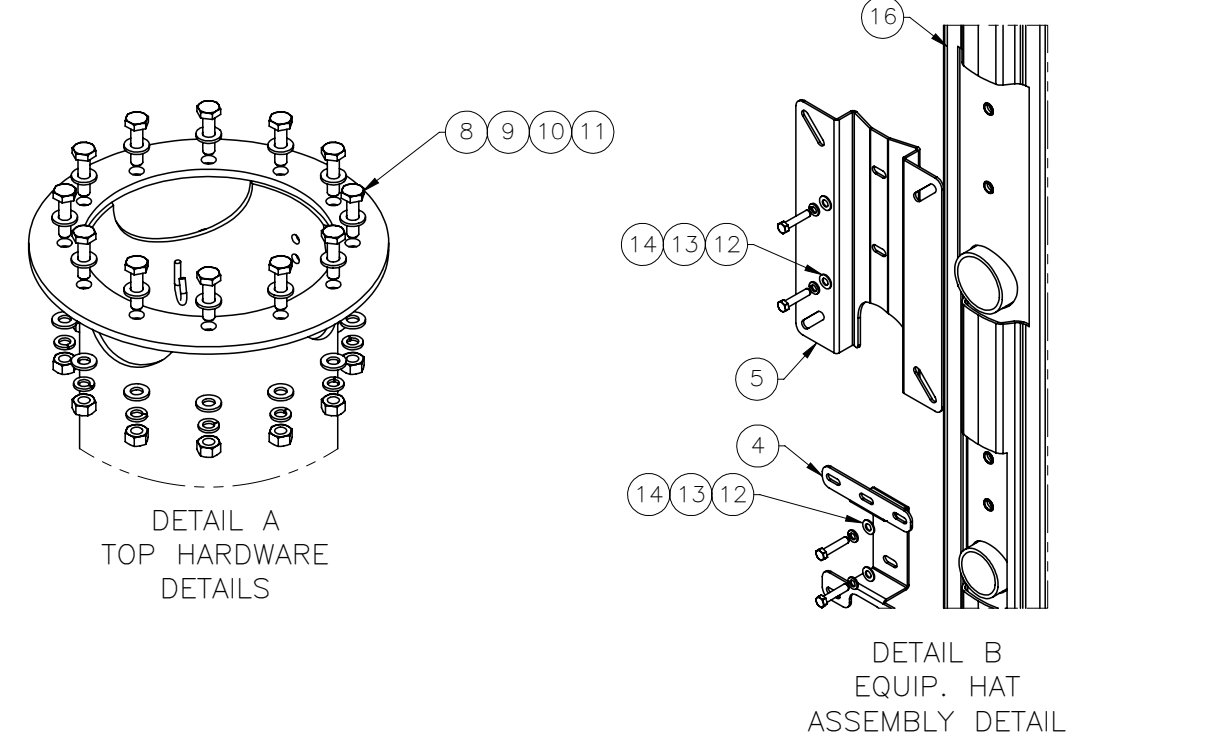
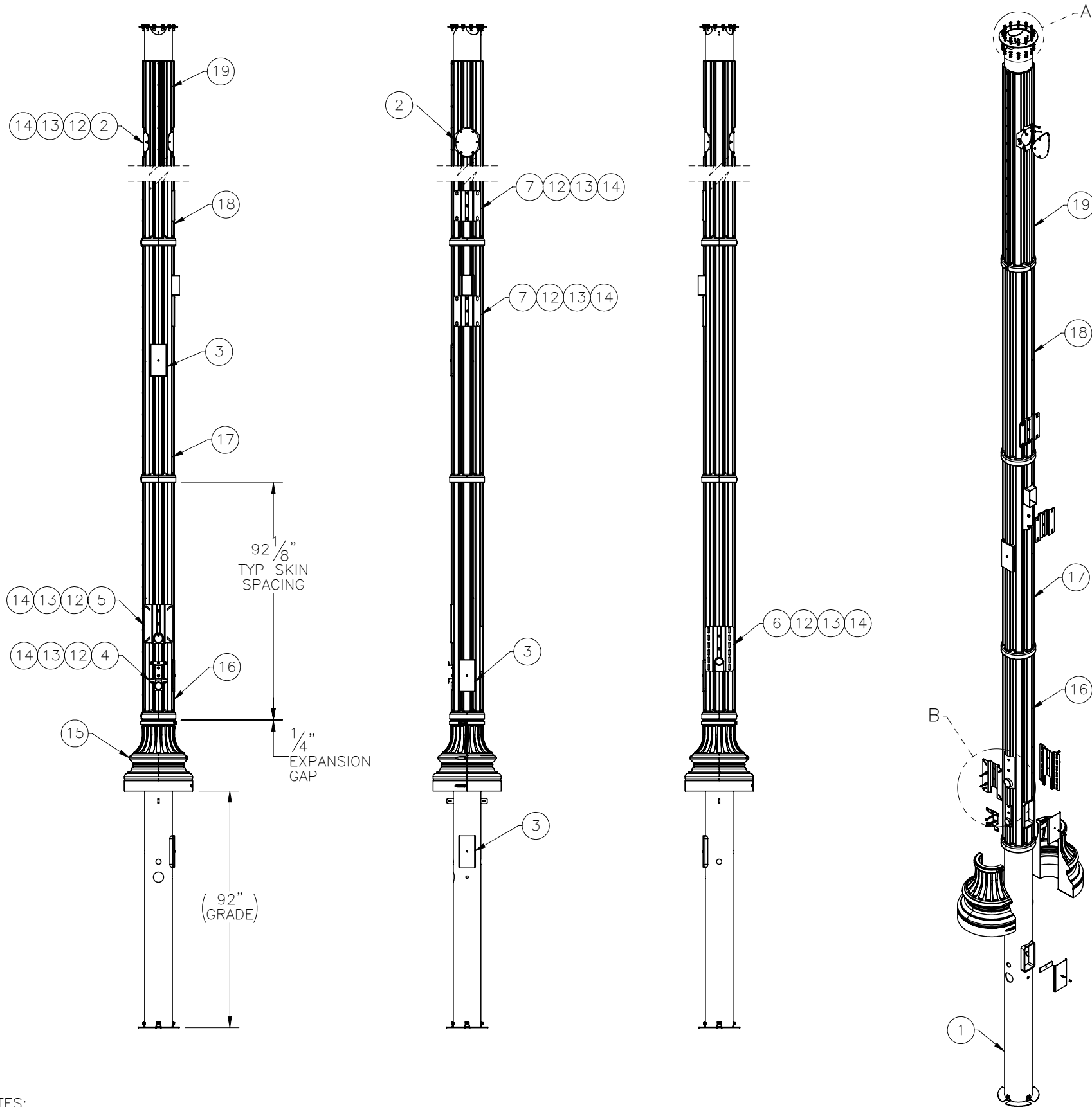


THE INFORMATION CONTAINED IN THIS DRAWING IS THE SOLE PROPERTY OF ELECTRO MECHANICAL INDUSTRIES, INC. ANY REPRODUCTION IN PART OR WHOLE WITHOUT THE WRITTEN PERMISSION OF ELECTRO MECHANICAL IND., IS PROHIBITED.

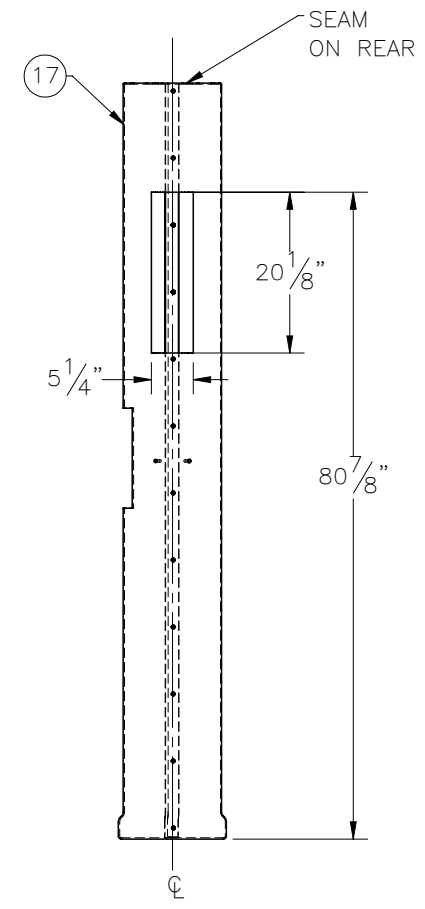
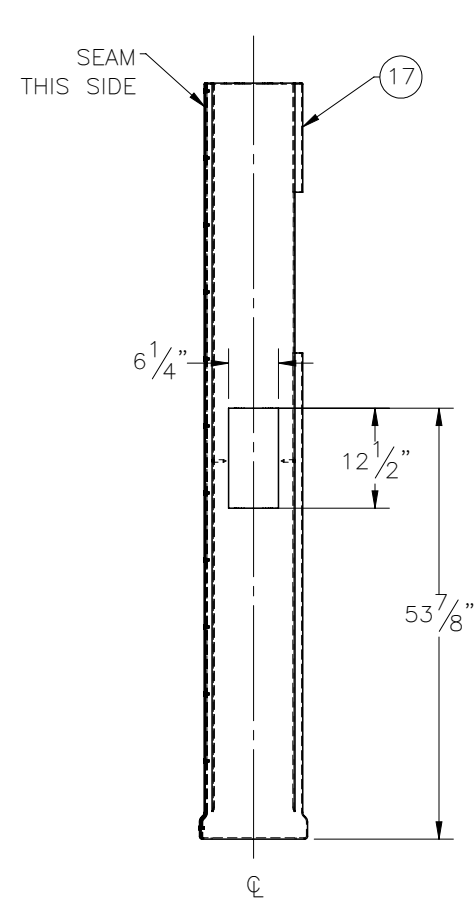
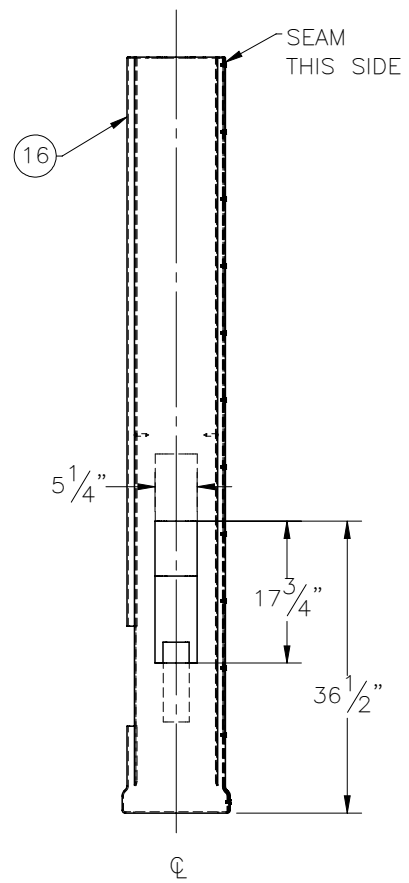
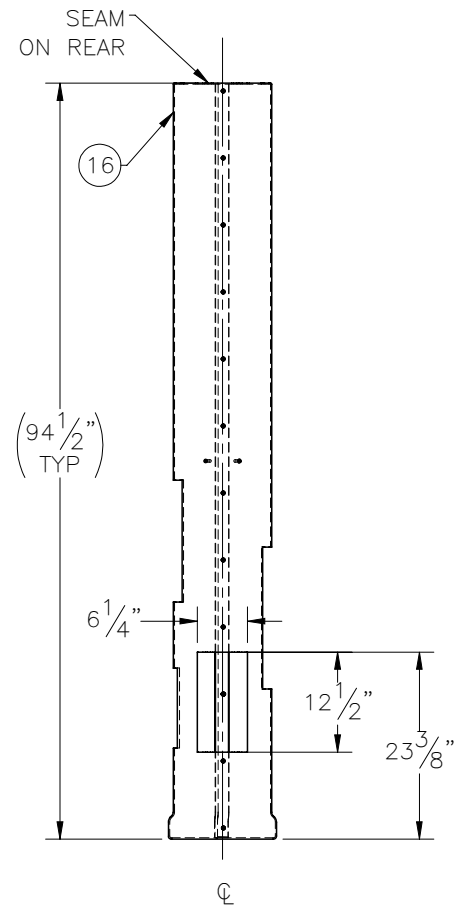
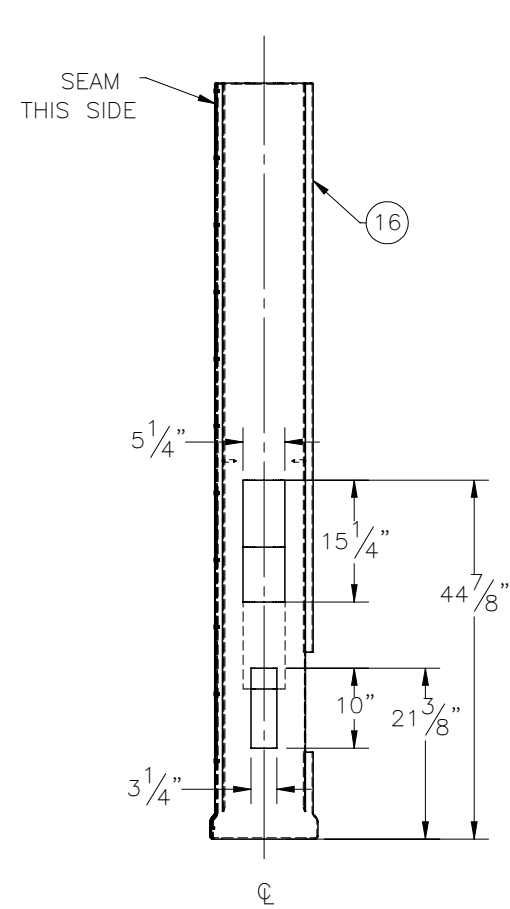
REVISIONS					
REV.	DCN #	DESCRIPTION	DATE	BY	APPROVED
3	01091	ADDED PAINT NOTE, REVISED 1002-0000-0048	10/12/2021	BLH	JPB



ITEM NO.	QTY REQD	PART NUMBER	DESCRIPTION	LENGTH	WEIGHT
1	1	1002-0000-0048	34' FLUTED BARE MONOPOLE, DIR. BURIAL		1221.78
2	2	P-003-433	COVER PLATE		8.64
3	3	1000-0020-0036	6" X 12" HANDHOLE COVER KIT		4.26
4	1	P-003-179	EQUIPMENT HAT, LOAD CENTER		1.3
5	1	P-003-311	EQUIPMENT HAT, METER ENCLOSURE, 10" PIPE		6.75
6	1	P-003-310	EQUIPMENT HAT, CHARLES FIBER ENCLOSURE, 10" PIPE		7.48
7	2	P-004-145	EQUIPMENT HAT, FOR SHRD60-552019		7.56
8	12	002-0BG-0014	BOLT HX. HD., .500-13UNC X 2.0" LG, ASTM A325, GALV.	2.00	0.2
9	12	002-0LW-G002	WASHER, SPLIT LOCK, .500", GALV		0.01
10	24	002-0FW-G002	FW, .50, F436, HDG		0.02
11	12	002-0NG-0010	NUT, HEX, .500-13UNC, GR 2H, GALV		0.06
12	24	002-0FW-G005	WASHER, FLAT, .375, GALV		0.01
13	24	002-0LW-G005	WASHER, SPLIT LOCK, .375 INCH, GALV.		0.01
14	24	002-0BG-0002	BOLT, HEX HD, .375-16UNC X 1.75 LG, GR 5, GALV		0.01
15	1	602-009-0001-XXX	DELEWARE SHROUD, 27 1/2" TALL X 26 1/2" DIA.		7.91
16	1	601-003-0002-XXX_1	10.75" O.D. X 94.50" 8-FLUTE SLEEVE, RESIN		
17	1	601-003-0002-XXX_2	10.75" O.D. X 94.50" 8-FLUTE SLEEVE, RESIN		
18	1	601-003-0002-XXX_3	10.75" O.D. X 94.50" 8-FLUTE SLEEVE, RESIN		
19	1	601-003-0002-XXX_4	10.75" O.D. X 94.50" 8-FLUTE SLEEVE, RESIN		

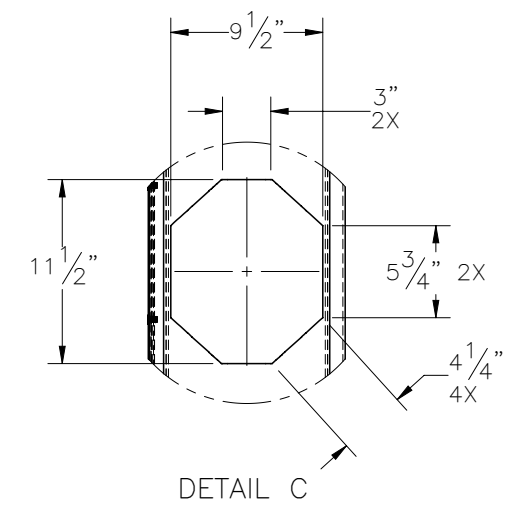
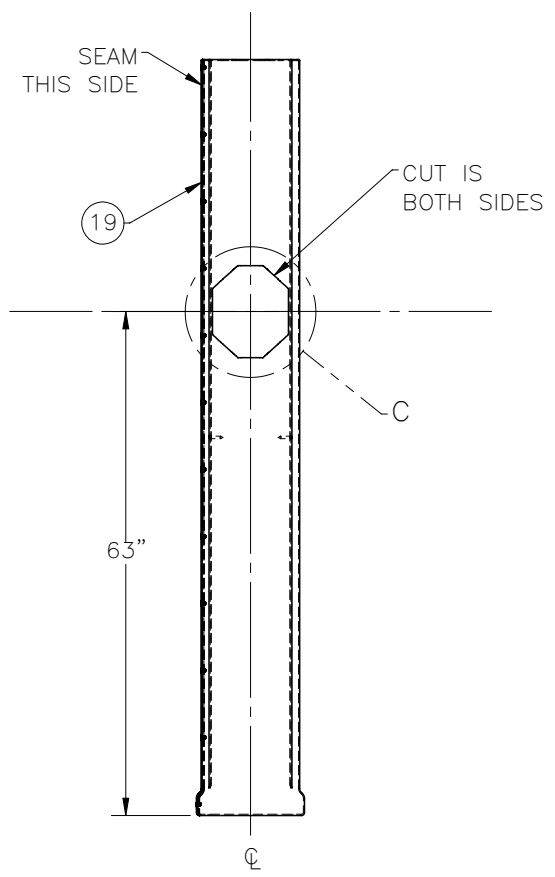
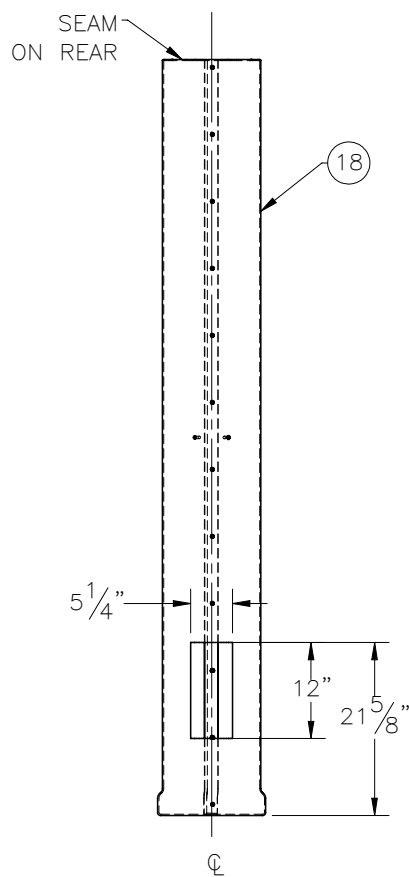
- NOTES:
1. PAINT OR GALVANIZE PER CUSTOMER SPEC. \triangle
 2. CLAMHELL BASE AND SKIN TO BE SHIPPED LOOSE. TO BE CUT AND FIT DURING INSTALL. SEE SHEET 2

SURFACE FINISH <input checked="" type="checkbox"/> UNLESS OTHERWISE SPECIFIED		UNLESS OTHERWISE SPECIFIED DIMENSIONS ARE IN INCHES		APPROVALS		DATE		ELECTRO MECHANICAL INDUSTRIES, INC. 11230 NEESESHAW DRIVE HOUSTON, TEXAS 77065 1-800-453-0050	
MATERIAL SEE PARTS LIST		TOLERANCES		DRAWN M. GELLENTHIN		9/16/2020			
THIRD ANGLE PROJECTION		.0 ±.06 .00 ±.015 .000 ±.005		CHECKER F. MERCHAN		9/22/2020		34' FLUTED MONOPOLE TOWER, DIR. BURIAL	
NEXT ASSY		FRACTIONS ± 1/16		ENGINEER J. BREEN		9/23/2020			
USED ON		ANGLES ± .25°		PRODUCTION J. SUNDERLAND		9/25/2020		SIZE B DRAWING NO. 1002-0020-0068 REV 3	
APPLICATIONS		HOLES: DRILLED OR PUNCHED ± 1/32		SCALE: 1:128		WEIGHT: 1375.883 lbs.		SHEET 1 OF 2	
		BURNED ± 1/32							



601-003-0002-XXX_1

601-003-0002-XXX_2



601-003-0002-XXX_3

601-003-0002-XXX_4