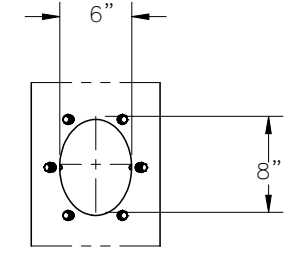
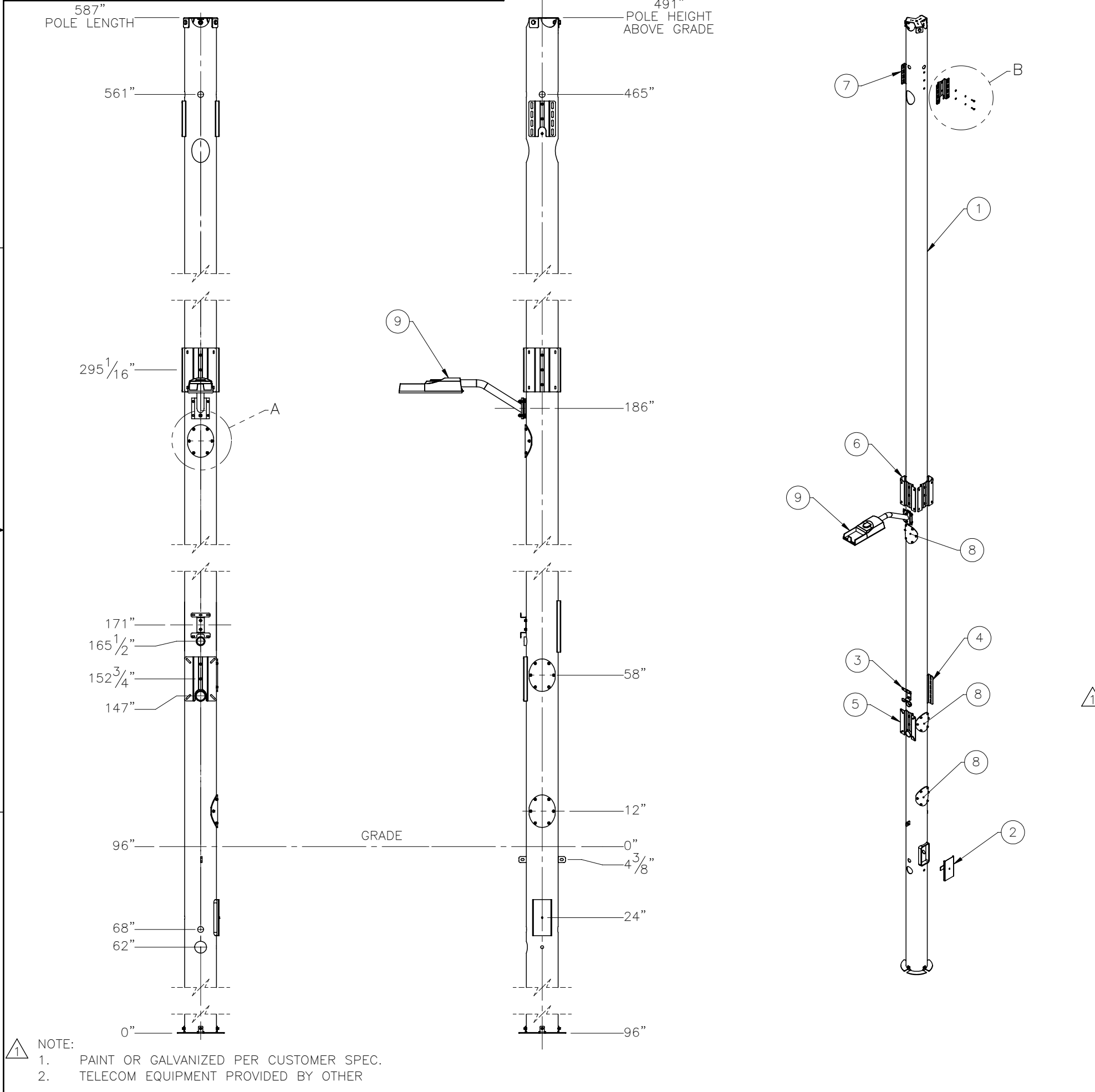
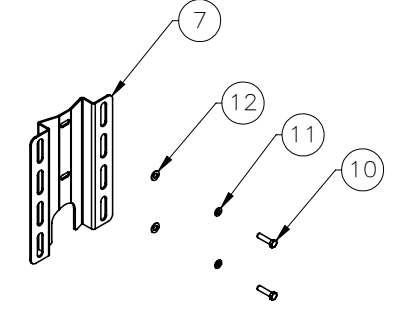


THE INFORMATION CONTAINED IN THIS DRAWING IS THE SOLE PROPERTY OF ELECTRO MECHANICAL INDUSTRIES, INC. ANY REPRODUCTION IN PART OR WHOLE WITHOUT THE WRITTEN PERMISSION OF ELECTRO MECHANICAL IND., IS PROHIBITED.

| REVISIONS | | | | | |
|-----------|-------|--|-----------|-----|----------|
| REV. | DCN # | DESCRIPTION | DATE | BY | APPROVED |
| 1 | 01114 | VISUALLY UPDATED FOR BELOW CHANGES AND UPDATED NOTES | 1/31/2022 | BLH | JPB |




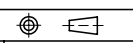
DETAIL A
HAND HOLE
5X



DETAIL B
TYP HAT
CONNECTION

| ITEM NO. | QTY REQD | PART NUMBER | DESCRIPTION | WEIGHT |
|----------|----------|----------------|--|--------|
| 1 | 1 | 1002-0000-0033 | 40'-11" BARE MONOPOLE, NOLA STREET LIGHT POLE | 1381.0 |
| 2 | 1 | 1000-0020-0036 | 6" X 12" HANDHOLE COVER KIT | 4.26 |
| 3 | 1 | P-003-179 | EQUIPMENT HAT, LOAD CENTER | 1.3 |
| 4 | 1 | P-003-310 | EQUIPMENT HAT, CHARLES FIBER ENCLOSURE, 10" PIPE | 7.48 |
| 5 | 1 | P-003-311 | EQUIPMENT HAT, METER ENCLOSURE, 10" PIPE | 6.75 |
| 6 | 4 | P-003-313 | EQUIPMENT HAT, RECTIFIER, 10" PIPE | 7.35 |
| 7 | 2 | P-003-314 | EQUIPMENT HAT, CBRS RADIO, 10" PIPE | 4.47 |
| 8 | 3 | P-003-433 | COVER PLATE | 8.6 |
| 9 | 1 | 1002-0050-0027 | STREET LAMP LIGHT KIT | 34.2 |
| 10 | 40 | 002-0BZ-0052 | BOLT, HEX, .375-16X 1.5 LG, GR 5, ZINC | 0.01 |
| 11 | 40 | 002-0LW-G005 | WASHER, SPLIT LOCK, .375 INCH, GALV. | 0.01 |
| 12 | 40 | 002-0FW-G005 | WASHER, FLAT, .375, GALV | 0.01 |

NOTE:
1. PAINT OR GALVANIZED PER CUSTOMER SPEC.
2. TELECOM EQUIPMENT PROVIDED BY OTHER

| | | | | | | | | | |
|--|--|---|--|--------------------------|--|------------|--|--|--|
| SURFACE FINISH <input checked="" type="checkbox"/> UNLESS OTHERWISE SPECIFIED | | UNLESS OTHERWISE SPECIFIED DIMENSIONS ARE IN INCHES | | APPROVALS | | DATE | |  ELECTRO MECHANICAL INDUSTRIES, INC. 11230 NEESESHAW DRIVE HOUSTON, TEXAS 77065 1-800-453-0050 | |
| MATERIAL SEE PARTS LIST | | TOLERANCES .0 ±.06 .00 ±.015 .000 ±.005 FRACTIONS ± 1/16 ANGLES ± .25° HOLES: DRILLED OR PUNCHED ± 1/32 BURNED ± 1/32 | | DRAWN J. CRITELLI | | 11/21/2019 | | | |
| THIRD ANGLE PROJECTION  | | | | CHECKER R. WOODARD | | 11/22/2019 | | SIZE B DRAWING NO. 1002-0020-0059 REV 1 | |
| NEXT ASSY | | USED ON | | ENGINEER J. BREEN | | 11/22/2019 | | | |
| APPLICATIONS | | | | PRODUCTION J. SUNDERLAND | | 11/25/2019 | | | |