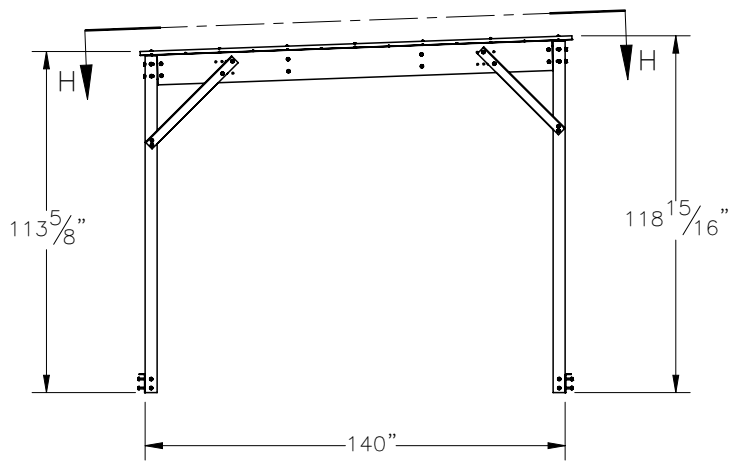
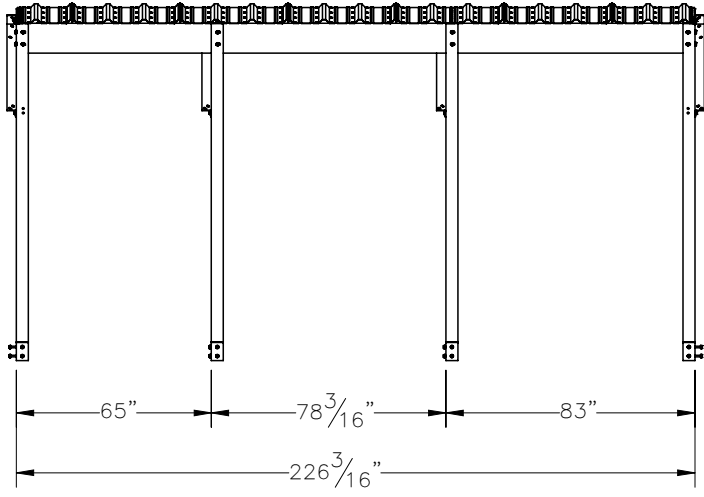
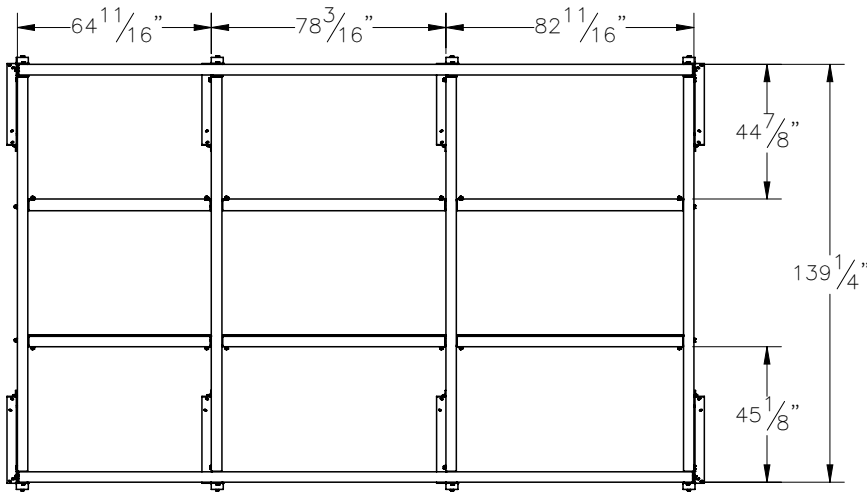
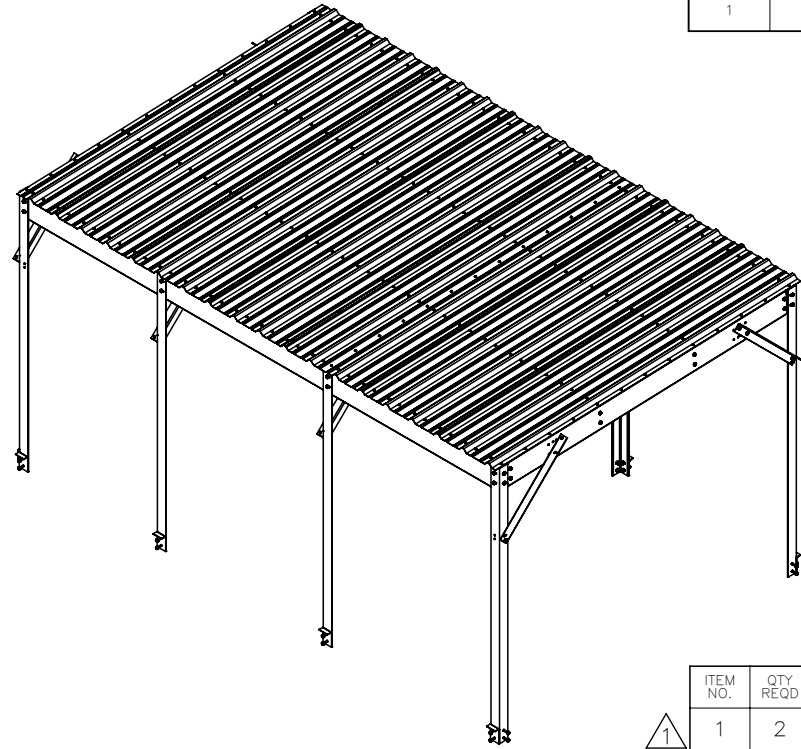

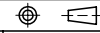


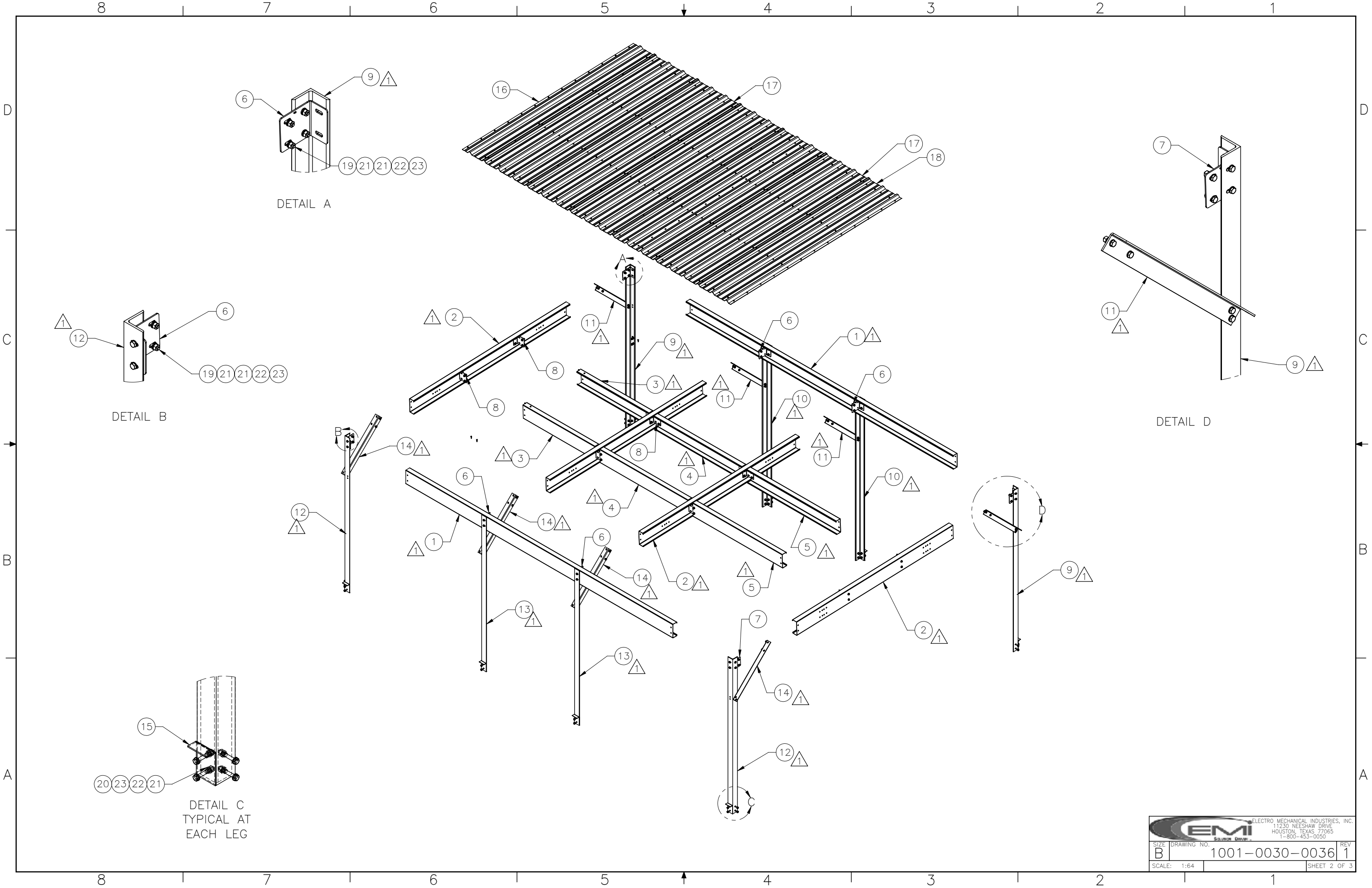
THE INFORMATION CONTAINED IN THIS DRAWING IS THE SOLE PROPERTY OF ELECTRO MECHANICAL INDUSTRIES, INC. ANY REPRODUCTION IN PART OR WHOLE WITHOUT THE WRITTEN PERMISSION OF ELECTRO MECHANICAL IND., IS PROHIBITED.

REVISIONS					
REV.	DCN #	DESCRIPTION	DATE	BY	APPROVED
1	DCN01276	REPLACED 4X P-006-930 ON THE LOW SIDE OF THE CANOPY WITH P-007-102, UPDATED WITH LOWER LEVEL CHANGES	11/8/2023	FJB	JPB



ITEM NO.	QTY REQD	PART NUMBER	DESCRIPTION	LENGTH	WEIGHT
1	2	P-006-921	FRONT-REAR, PURLIN	224 5/8"	84.72
2	4	P-006-922	OUTER, PURLIN	131 5/8"	49.5445
3	2	P-006-925	SHORT INT., PURLIN	60 1/2"	22.81
4	2	P-006-924	CENTER INT., PURLIN	74 1/16"	27.93
5	2	P-006-923	LONG INT., PURLIN	75 5/16"	28.40
6	6	P-005-746	ROOF CLIP, LEFT		3.08
7	2	P-005-745	ROOF CLIP, RIGHT		3.08
8	12	P-002-525	ROOF INSIDE PURLIN CLIP		2.77
9	2	P-006-926	LEG, CANOPY CORNER LONG		93.5
10	2	P-006-927	LEG, CANOPY CENTER LONG		89.9
11	4	P-006-930	HIGH BRACE, KNEE		15.7
12	2	P-006-928	LEG, CANOPY CORNER SHORT		89.5
13	2	P-006-929	LEG, CANOPY CENTER SHORT		85.9
14	4	P-007-102	LOW BRACE, KNEE		16.7
15	8	P-006-931	SINGLE BRACKET, C-CHANNEL INSIDE FACE		1.7
16	1	P-007-043	ROOF PANEL, 19.13" X 144"	144	20.9
17	5	P-006-932	ROOF PANEL, 36" X 144"	144	42.8
18	1	P-006-933	ROOF PANEL, 29.44" X 144"	144	32.6
19	120	002-0BG-0012	BOLT, HH, .500-13 X 1.75, GALV, A325, PT X 1.00	1 3/4"	0.1557
20	24	002-0BG-0224	BOLT, HH, .500-13 X 3.50, GALV, A325, PT X 1.00	3 1/2"	0.2534
21	288	002-0FW-G002	WASHER, FLAT, .500, GALV, F436		0.03
22	144	002-0LW-G002	WASHER, SPLIT LOCK, .500, GALV		0.014
23	144	002-0NG-0010	NUT, HEX, .500-13, GALV, GR 2H		0.06
24	244	002-0SG-0007	#12 X 1 1/4" LG., SELF DRILLING SCREW W. WASHER, GALV.		0.02

SURFACE FINISH <input checked="" type="checkbox"/> UNLESS OTHERWISE SPECIFIED		UNLESS OTHERWISE SPECIFIED DIMENSIONS ARE IN INCHES		APPROVALS		DATE		 ELECTRO MECHANICAL INDUSTRIES, INC. 11230 NEESESHAW DRIVE HOUSTON, TEXAS 77065 1-800-453-0050	
MATERIAL SEE PARTS LIST		TOLERANCES .0 ±.06 .00 ±.015 .000 ±.005 FRACTIONS ± 1/16 ANGLES ± .25° HOLES: DRILLED OR PUNCHED ± 1/32 BURNED ± 1/32		DRAWN B. HUTSON		10/6/2023			
THIRD ANGLE PROJECTION 				CHECKER J. ROACH		10/6/2023		SIZE B DRAWING NO. 1001-0030-0036 REV 1	
NEXT ASSY		USED ON		ENGINEER J. Breen		10/6/2023			
APPLICATIONS				PRODUCTION J. KERNER		10/6/2023			



DETAIL A

DETAIL B

DETAIL C
TYPICAL AT
EACH LEG

DETAIL D

		ELECTRO MECHANICAL INDUSTRIES, INC. 11230 NEESHAW DRIVE HOUSTON, TEXAS 77065 1-800-453-0050	
SIZE B	DRAWING NO. 1001-0030-0036	REV 1	SHEET 2 OF 3
SCALE: 1:64			

