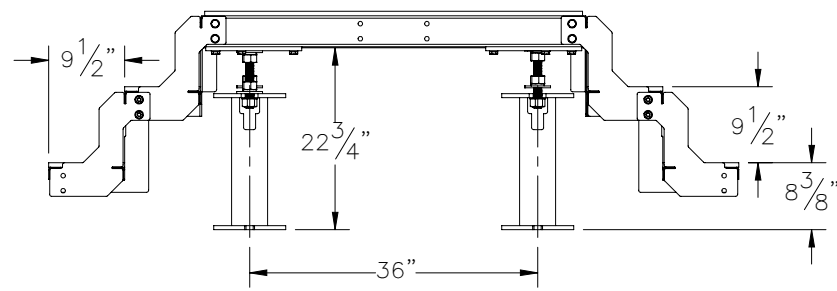
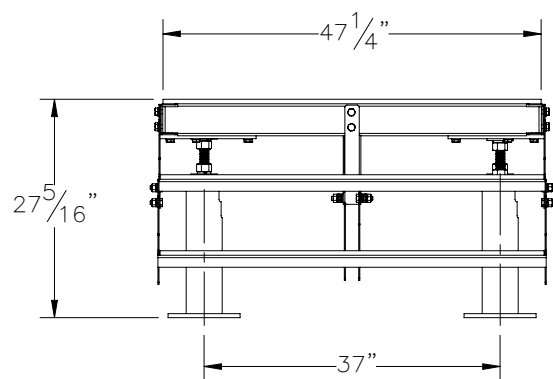
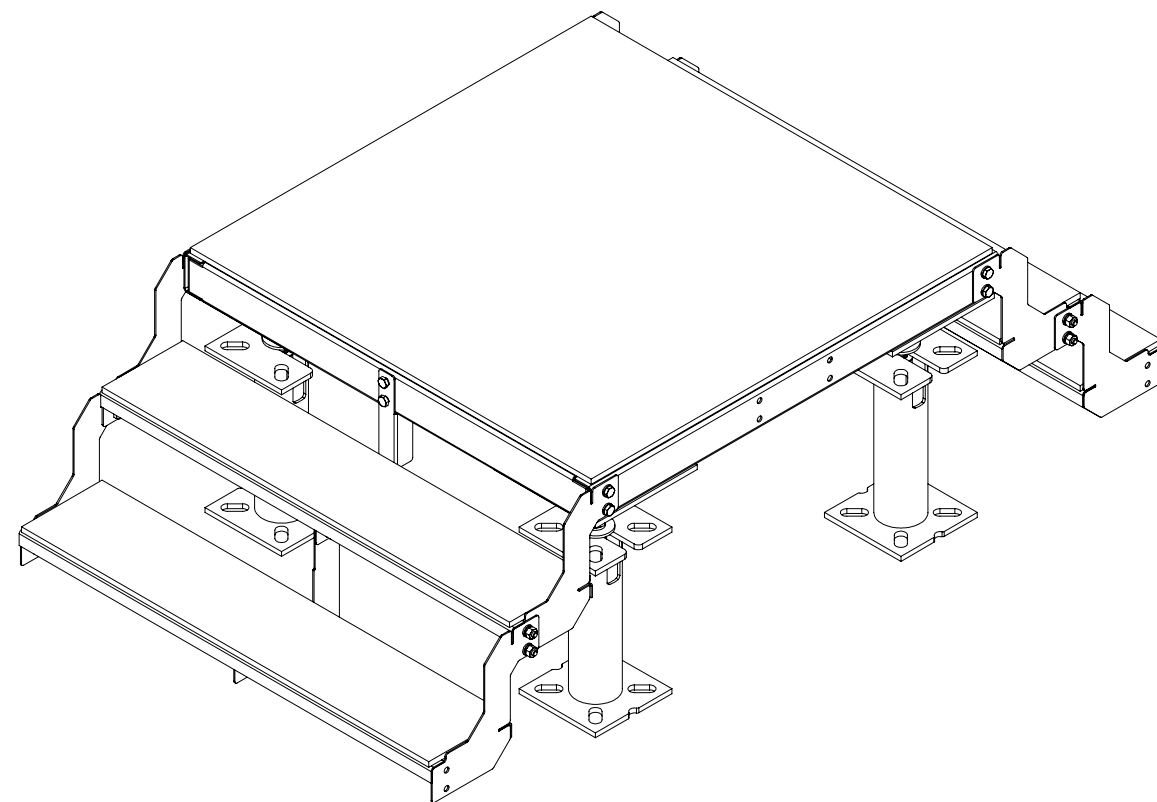
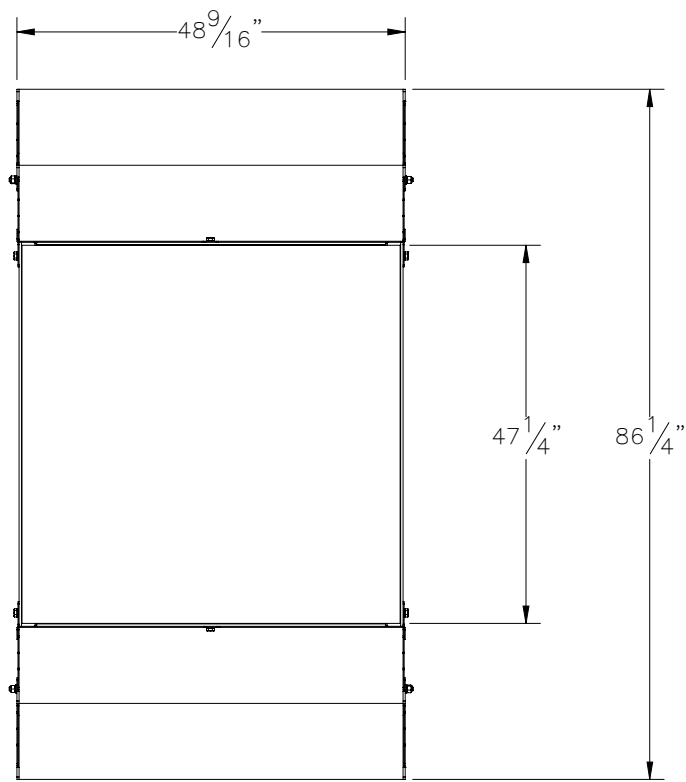

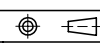


THE INFORMATION CONTAINED IN THIS DRAWING IS THE SOLE PROPERTY OF ELECTRO MECHANICAL INDUSTRIES, INC. ANY REPRODUCTION IN PART OR WHOLE WITHOUT THE WRITTEN PERMISSION OF ELECTRO MECHANICAL IND., IS PROHIBITED.



# SALES

SURFACE FINISH <input checked="" type="checkbox"/> UNLESS OTHERWISE SPECIFIED		UNLESS OTHERWISE SPECIFIED DIMENSIONS ARE IN INCHES		APPROVALS		DATE		 ELECTRO MECHANICAL INDUSTRIES, INC. 11230 NEESHAW DRIVE HOUSTON, TEXAS 77065 1-800-453-0050	
MATERIAL SEE PARTS LIST		TOLERANCES .0 ± .06 .00 ± .015 .000 ± .005		DRAWN J. BREEN		3/7/2024		TITLE: 4' x 4' STEP OVER WITH GRAVITY FEET, 28" ELEV	
THIRD ANGLE PROJECTION 		FRACTIONS ± 1/16		CHECKER J. Breen		3/7/2024		SIZE B	
NEXT ASSY		ANGLES ± .25°		ENGINEER J. Breen		3/7/2024		DRAWING NO. 1000-0030-0205	
USED ON		HOLES: DRILLED OR PUNCHED ± 1/32		PRODUCTION J. Breen		3/7/2024		REV 0	
APPLICATIONS		BURNED ± 1/32		SCALE: 1:24		WEIGHT: 1010.87 lbs.		SHEET 1 OF 1	