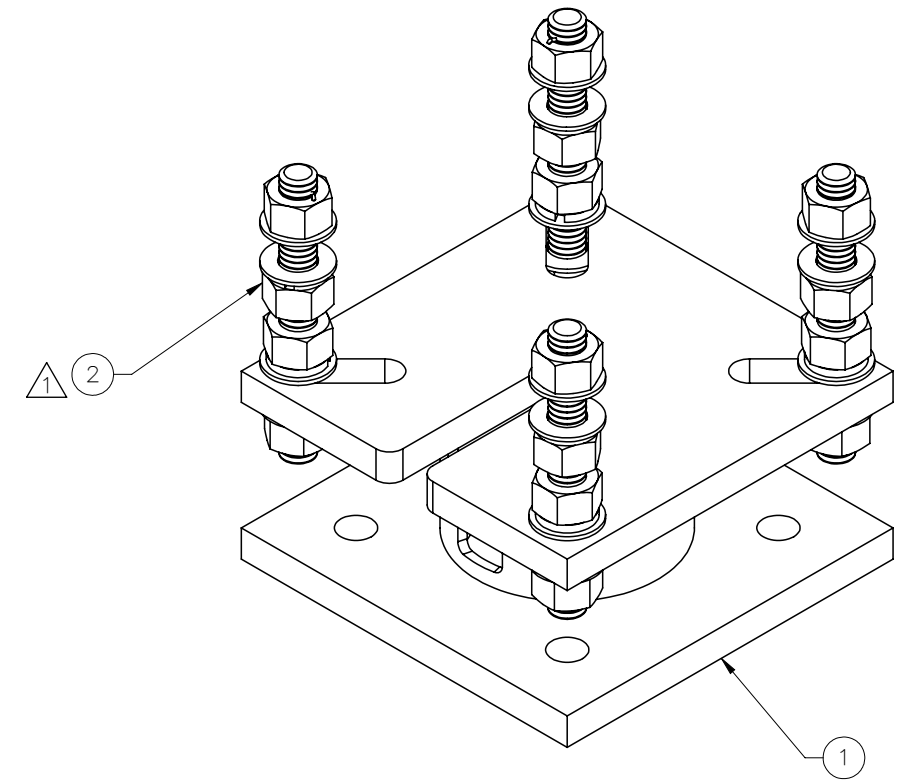
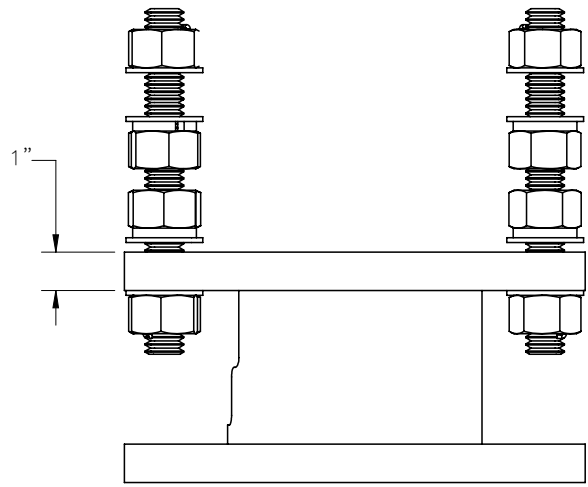
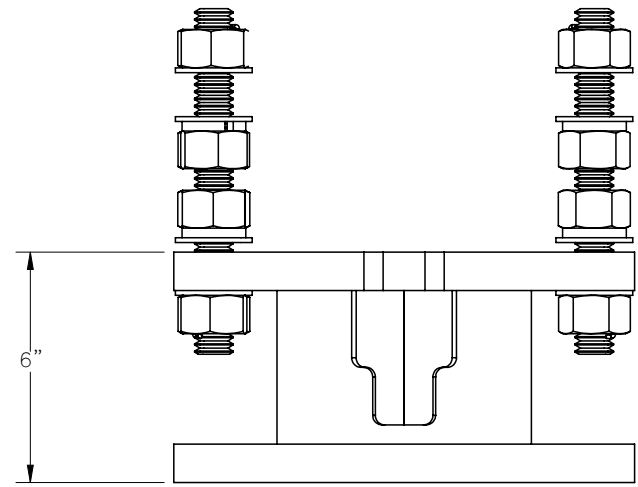
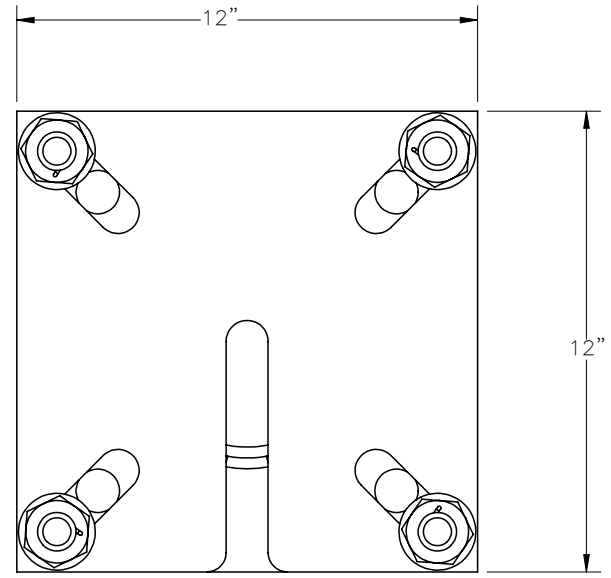

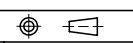


THE INFORMATION CONTAINED IN THIS DRAWING IS THE SOLE PROPERTY OF ELECTRO MECHANICAL INDUSTRIES, INC. ANY REPRODUCTION IN PART OR WHOLE WITHOUT THE WRITTEN PERMISSION OF ELECTRO MECHANICAL IND., IS PROHIBITED.

REVISIONS					
REV.	DCN #	DESCRIPTION	DATE	BY	APPROVED
1	01086	INDIVIDUAL HARDWARE REPLACED WITH KIT 1000-0020-0077	09/29/21	JTR	JPB



ITEM NO.	QTY REQD	PART NUMBER	DESCRIPTION	LENGTH	WEIGHT
1	1	W-002-052	6" X 6" EXTENSION WELDMENT		73.6
2	1	1000-0020-0077	QUAD MOUNT LEVELING HARDWARE KIT		15.2

SURFACE FINISH	UNLESS OTHERWISE SPECIFIED	UNLESS OTHERWISE SPECIFIED DIMENSIONS ARE IN INCHES	APPROVALS	DATE	 ELECTRO MECHANICAL INDUSTRIES, INC. 11230 NEESESHAW DRIVE HOUSTON, TEXAS 77065 1-800-453-0050
MATERIAL	SEE PARTS LIST	TOLERANCES	DRAWN	9/4/2020	
THIRD ANGLE PROJECTION		.0 ± .06 .00 ± .015 .000 ± .005	CHECKER	9/8/2020	
NEXT ASSY	USED ON	FRACTIONS ± 1/16 ANGLES ± .25°	ENGINEER	9/8/2020	
APPLICATIONS		HOLES: DRILLED OR PUNCHED ± 1/32 BURNED ± 1/32	PRODUCTION	9/9/2020	TITLE: EXTENSION WELDMENT KIT, QUAD MOUNT, 6"
			J. SUNDERLAND		