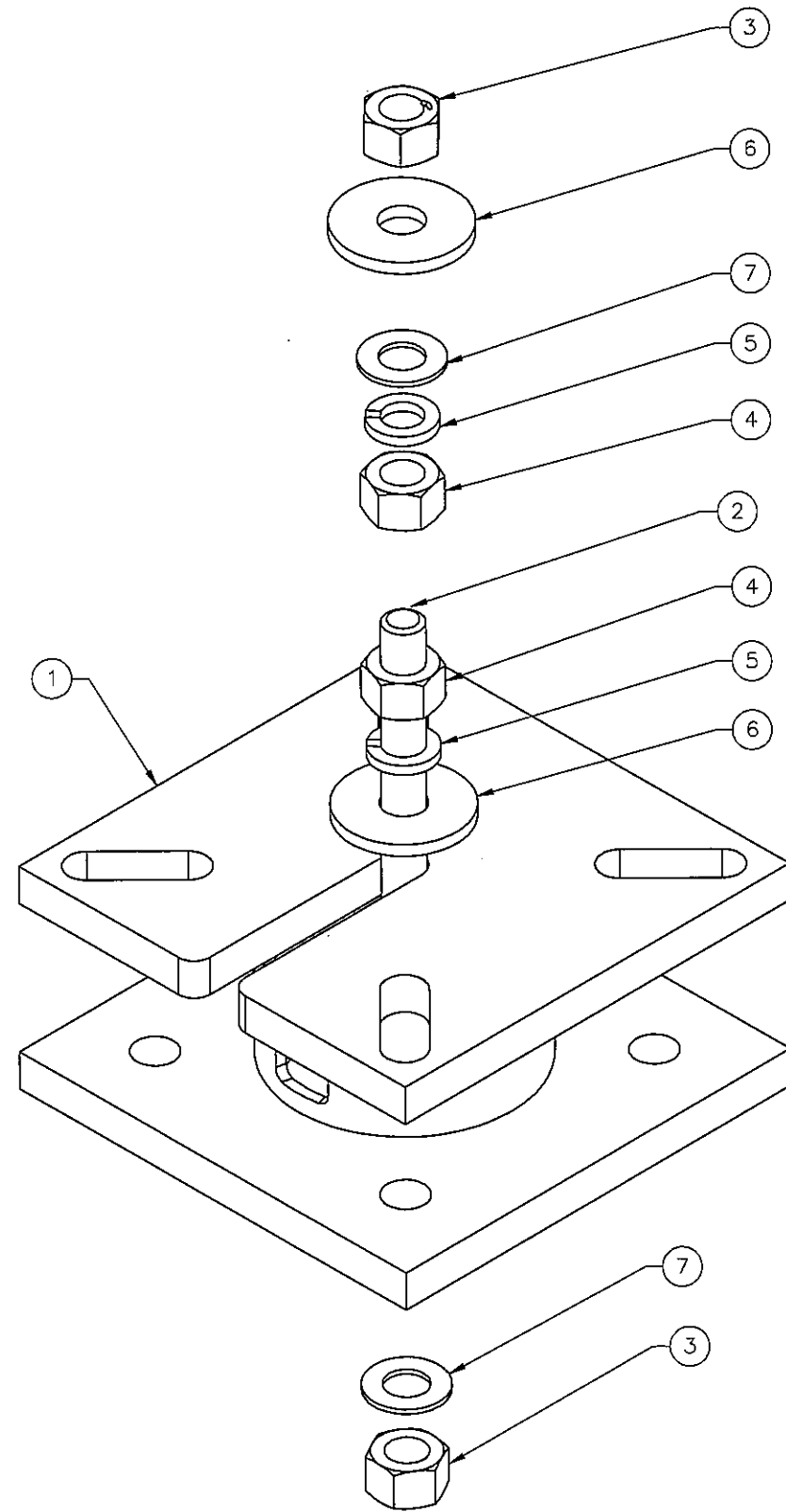

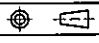


THE INFORMATION CONTAINED IN THIS DRAWING IS THE SOLE PROPERTY OF ELECTRO MECHANICAL INDUSTRIES, INC. ANY REPRODUCTION IN PART OR WHOLE WITHOUT THE WRITTEN PERMISSION OF ELECTRO MECHANICAL IND., IS PROHIBITED.



ITEM NO.	QTY REQD	PART NUMBER	DESCRIPTION	LENGTH	WEIGHT
1	1	W-002-052	6" X 6" EXTENSION WELDMENT		73.6
2	1	002-0AT-H000	ROD, THREADED, 1.00"-8 X 9.00" LG, ASTM A193 B7, GALV		2.01
3	2	002-0NG-0000	NUT, HX, ANCO LOCK, 1.00"-8UNC, GR 2H, GALV		0.43
4	2	002-0NG-0008	NUT, HX, 1.00"-8UNC, GR 2H, GALV		0.42
5	2	002-0LW-G008	WASHER, SPLIT LOCK, 1.00", GALV		0.09
6	2	P-004-233	WASHER, FLAT, 1-1/16" ID X 3-1/4" OD X 5/16", GALV STEEL		0.65
7	2	002-0FW-G009	WASHER, FLAT, 1.00", F436, GALV.		0.08

SURFACE FINISH <input checked="" type="checkbox"/> UNLESS OTHERWISE SPECIFIED		UNLESS OTHERWISE SPECIFIED DIMENSIONS ARE IN INCHES		APPROVALS		DATE		 ELECTRO MECHANICAL INDUSTRIES, INC. 11230 NEESEWAY DRIVE HOUSTON, TEXAS 77065 1-800-453-0050	
MATERIAL SEE PARTS LIST		TOLERANCES		DRAWN J. CRITELLI		9.4.2020			
THIRD ANGLE PROJECTION 		.0 ±.06 .000 ±.015 .000 ±.005		CHECKED J. BREEN		9.8.2020		ENGINEER/DESIGNER J. BREEN	
NEXT ASSY		ANGLES ±.25°		PRODUCTION J.K.S.		9.9.2020		SIZE B	
APPLICATIONS		HOLES: DRILLED OR PUNCHED ±1/32		SCALE: 1:4		WEIGHT: 79.0 lbs.		DRAWING NO. 1000-0030-0046	
		BURNED ±1/32		SHEET 1 OF 1				REV -	