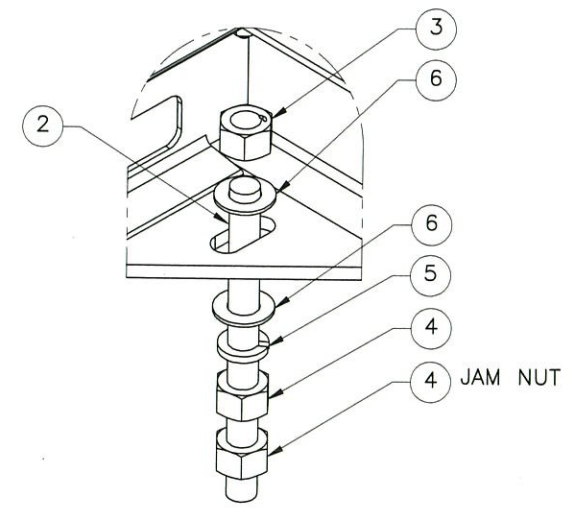
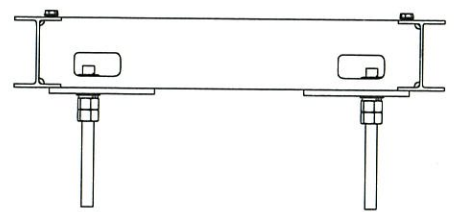
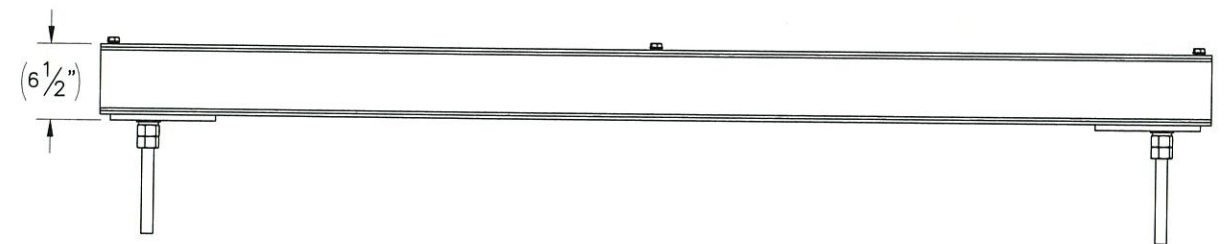
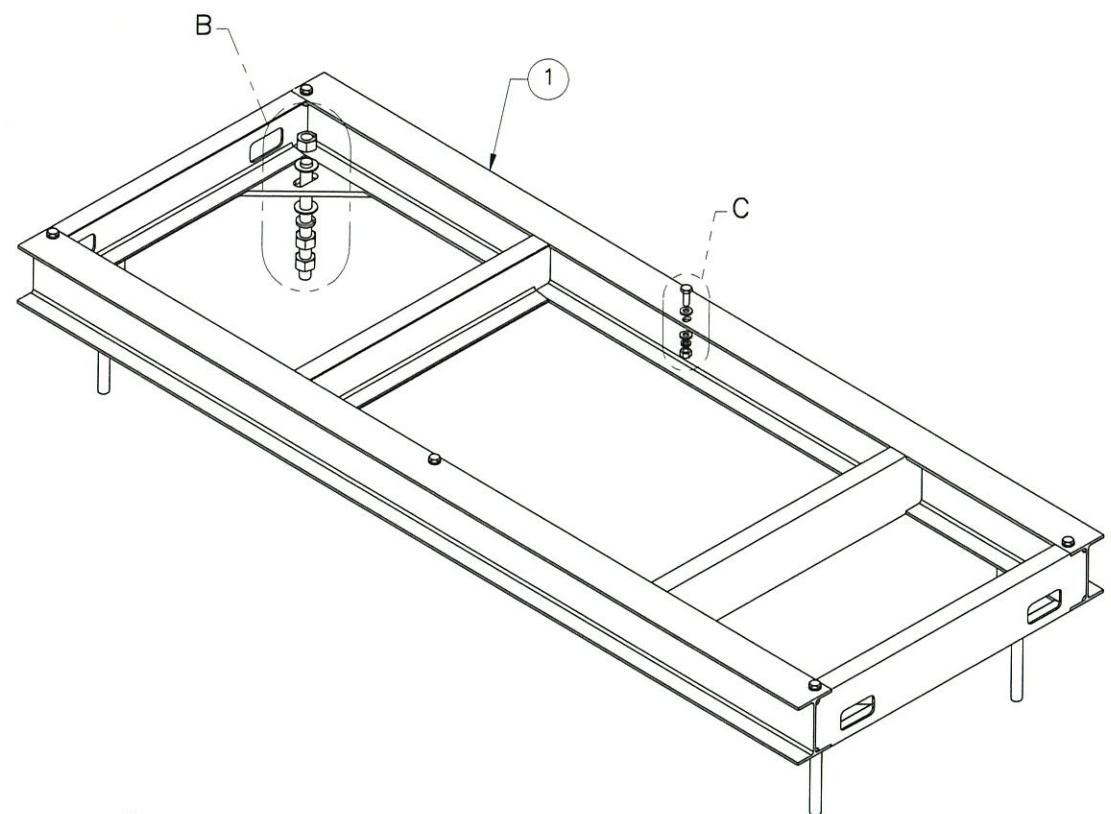
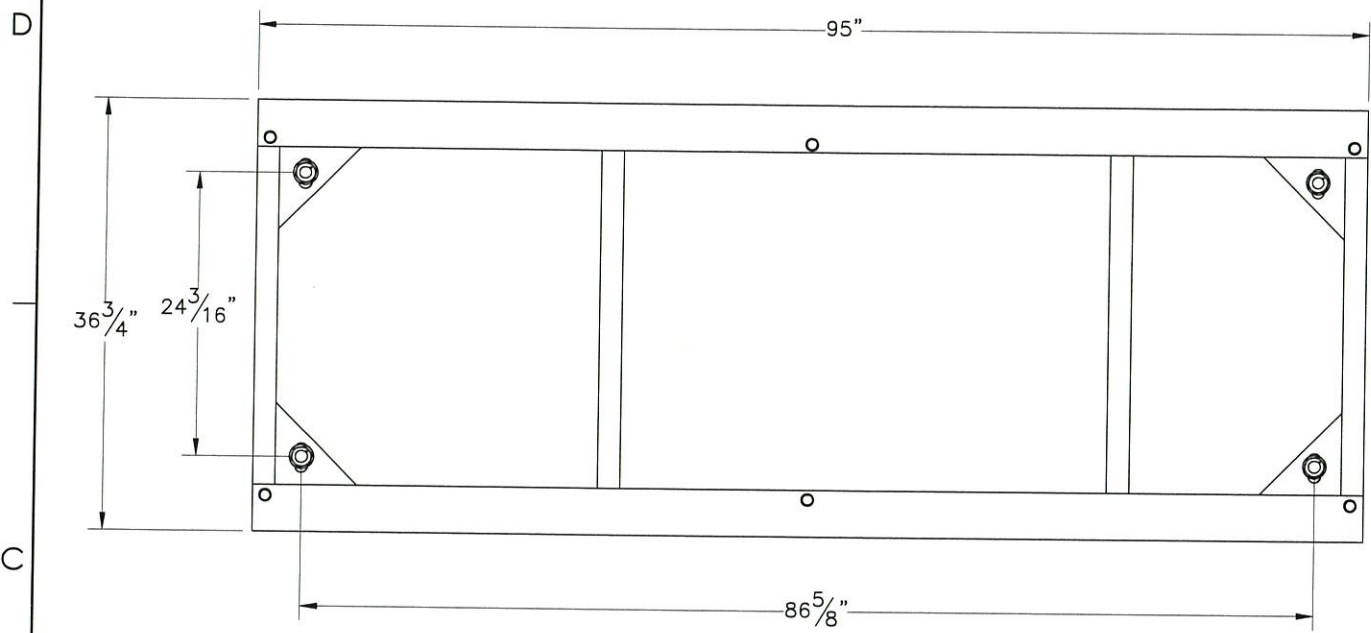
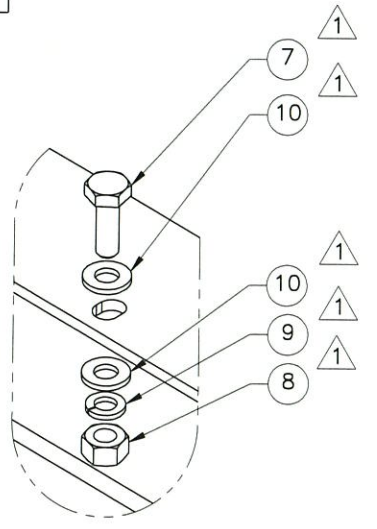


THE INFORMATION CONTAINED IN THIS DRAWING IS THE SOLE PROPERTY OF ELECTRO MECHANICAL INDUSTRIES, INC. ANY REPRODUCTION IN PART OR WHOLE WITHOUT THE WRITTEN PERMISSION OF ELECTRO MECHANICAL IND., IS PROHIBITED.

REVISIONS					
REV.	DCN #	DESCRIPTION	DATE	BY	APPROVED
1	DCN00764	ADDED 1/2" MOUNTING HARDWARE FOR WUC	12.12.19	JGC	<i>JPB</i>



DETAIL B
TYP
LEVELING HARDWARE



DETAIL C
TYP
WUC MOUNTING HARDWARE

ITEM NO.	QTY REQD	PART NUMBER	DESCRIPTION	LENGTH	WEIGHT
1	1	W-000-843	DELTA WUP SKID WELDMENT		293
2	4	002-OAT-G006	ROD, THREADED, 1.00"-8 X 12.00" LG, ASTM A193 B7, GALV.		2.68
3	4	002-ONG-0000	NUT, HX, ANCO LOCK, 1.00"-8UNC, GR 2H, GALV		0.43
4	8	002-ONG-0008	NUT, HX, 1.00"-8UNC, GR 2H, GALV		0.42
5	4	002-OLW-G008	WASHER, SPLIT LOCK, 1.00", GALV		0.09
6	8	002-OFW-G009	WASHER, FLAT, 1.00", F436, GALV		0.08
7	6	002-OBG-0010	BOLT, HX HD, .500-13UNC X 1.50 LG, ASTM A325, GALV		0.14
8	6	002-ONG-0010	NUT, HEX, .500-13UNC, GR 2H, GALV		0.06
9	6	002-OLW-G002	WASHER, SPLIT LOCK, .500", GALV		0.01
10	12	002-OFW-G002	WASHER, FLAT, .500", F436, GALV		0.02

SURFACE FINISH <input checked="" type="checkbox"/> UNLESS OTHERWISE SPECIFIED		UNLESS OTHERWISE SPECIFIED DIMENSIONS ARE IN INCHES		APPROVALS		DATE	
MATERIAL SEE PARTS LIST		TOLERANCES		DRAWN		11.25.19	
THIRD ANGLE PROJECTION		0 ±.06		CHECKED		11.25.19	
NEXT ASSY		.000 ±.015		ENGINEER/DESIGNER		11.25.19	
USED ON		FRACTIONS ± 1/16		PRODUCTION		11.25.19	
APPLICATIONS		ANGLES ± .25°		JKS			
		HOLES:		ELECTRO MECHANICAL INDUSTRIES, INC. 11230 NEEGHAW DRIVE HOUSTON, TEXAS 77065 1-800-453-0050			
		DRILLED OR PUNCHED +1/32		TITLE: DELTA WUC SKID WITH LEVELING HARDWARE KIT			
		BURNED ±1/32		SIZE: B DRAWING NO.: 1000-0030-0007 REV: 1			
				SCALE: 1:16 WEIGHT: 311.8 lbs. SHEET 1 OF 1			