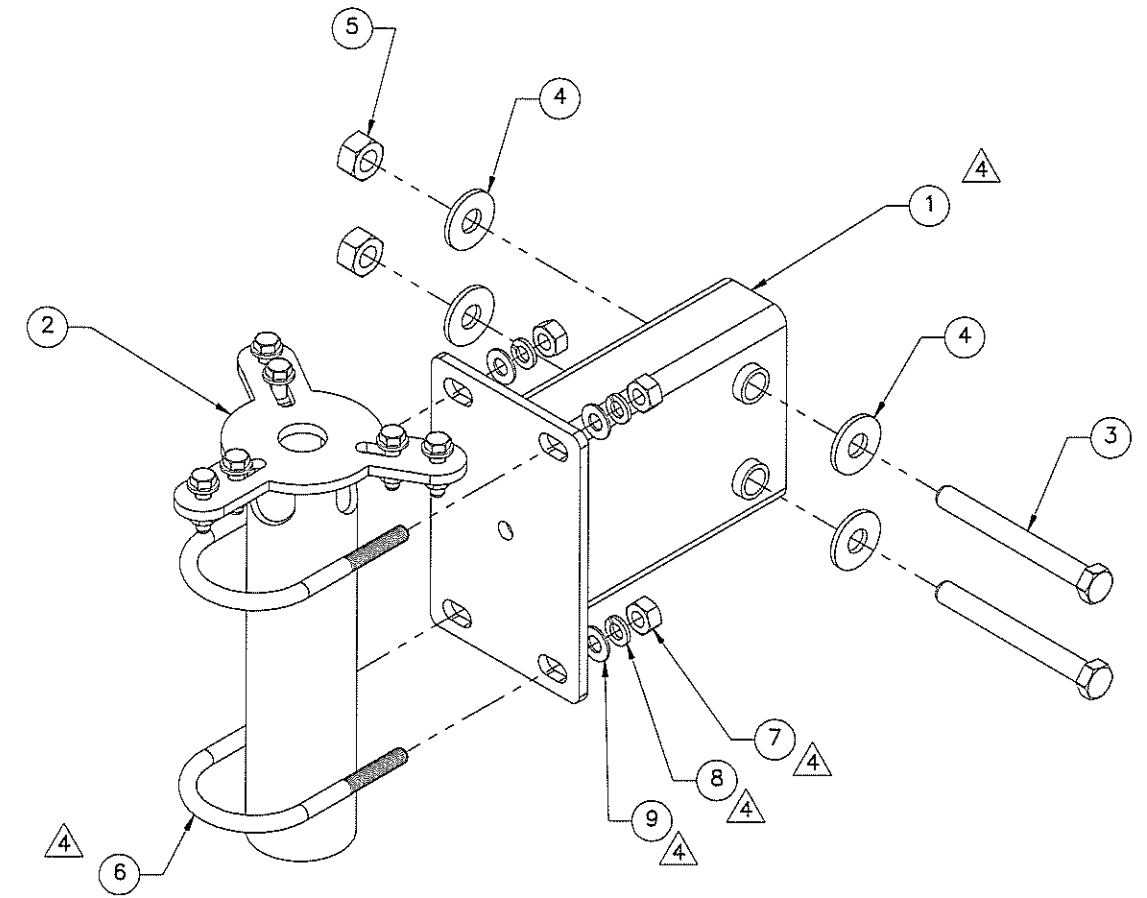
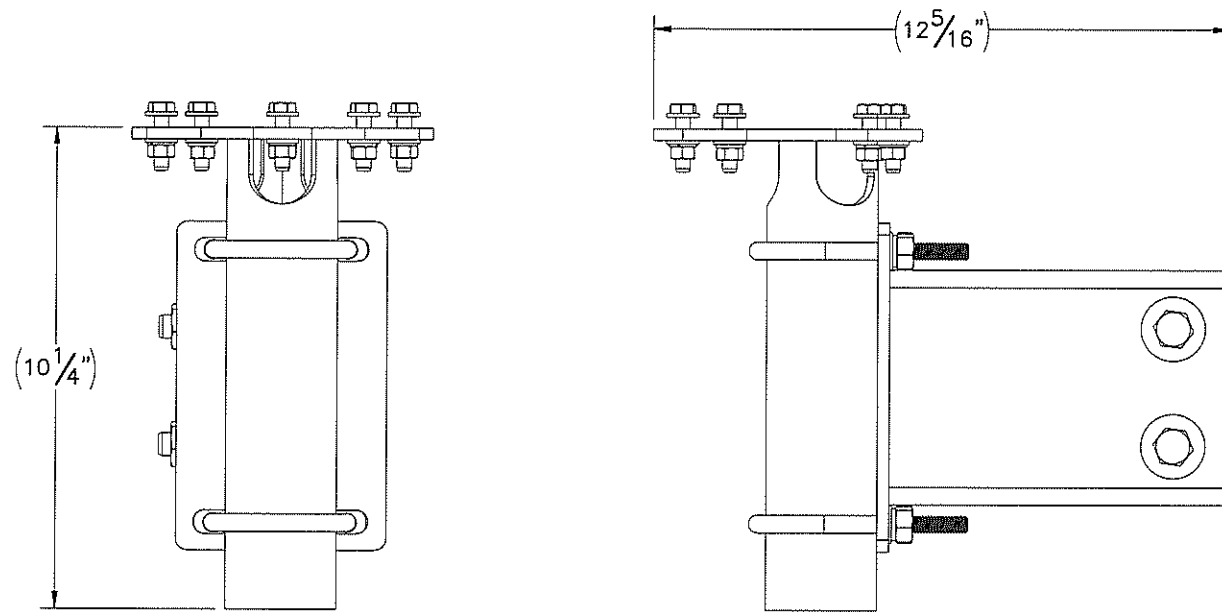
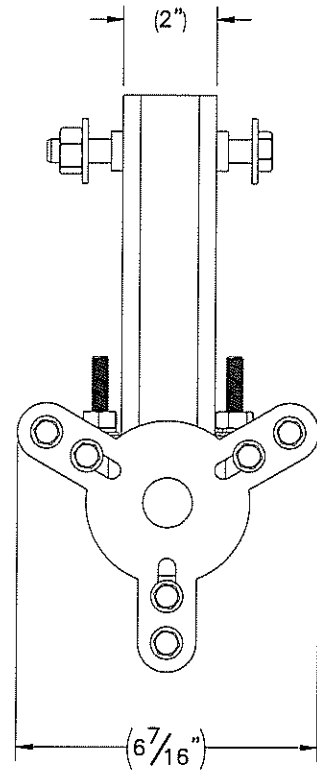
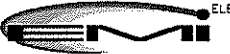
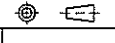


THE INFORMATION CONTAINED IN THIS DRAWING IS THE SOLE PROPERTY OF ELECTRO MECHANICAL INDUSTRIES, INC. ANY REPRODUCTION IN PART OR WHOLE WITHOUT THE WRITTEN PERMISSION OF ELECTRO MECHANICAL IND., IS PROHIBITED.

REVISIONS					
REV.	DCN #	DESCRIPTION	DATE	BY	APPROVED
4	DCN00656	UPDATED 3/8" HARDWARE AND WELDMENT	4.3.19	JGC	<i>JGC</i>



ITEM NO.	QTY REQD	PART NUMBER	DESCRIPTION	LENGTH	WEIGHT
1	1	W-001-194	CAN-ANTENNA EXTENSION ARM		7.28
2	1	1000-0020-0031	CAN-ANTENNA EXTENSION KIT		4
3	2	002-0BG-0011	BOLT, .500-13UNC X 4.5" LG, ASTM A325, GALV.		0.29
4	4	002-0FW-G020	WASHER, FLAT, .500", USS, GALV		0.04
5	2	002-0NG-0010	NUT, HEX, .500-13UNC, GR 2H, GALV		0.06
6	2	002-00U-G018	U-BOLT, .375-16 X 1.75 THD LNG., 2.5 I.D X 4.3125 HT, GALV.		0.040
7	4	002-0NG-0003	NUT, HEX, .375-16UNC, GR 2H, GALV		0.03
8	4	002-0LW-G005	WASHER, SPLIT LOCK, .375 INCH, GALV		0.01
9	4	002-0FW-G005	WASHER, FLAT, .375, GALV		0.01

SURFACE FINISH <input checked="" type="checkbox"/> UNLESS OTHERWISE SPECIFIED		UNLESS OTHERWISE SPECIFIED DIMENSIONS ARE IN INCHES		APPROVALS		DATE		 ELECTRO MECHANICAL INDUSTRIES, INC. 11230 NEEDSHAW DRIVE HOUSTON, TEXAS 77065 1-800-453-0050	
MATERIAL SEE PARTS LIST		TOLERANCES		DRAWN P. GUTIERREZ		12.14.18			
THIRD ANGLE PROJECTION 		.00 ± .005		CHECKED J. BREEN		12.18.18		ENGINEER/DESIGNER J. BREEN	
NEXT ASSY		FRACTIONS ± 1/16		PRODUCTION JKS		12.18.18		SIZE B	
USED ON		ANGLES ± .25°		DRAWING NO. 1000-0020-0030		REV 4		SCALE: 1:4	
APPLICATIONS		HOLES: DRILLED OR PUNCHED ± 1/32		WEIGHT: 13 lbs.		SHEET 1 OF 2			
		BURNED ± 1/32							

