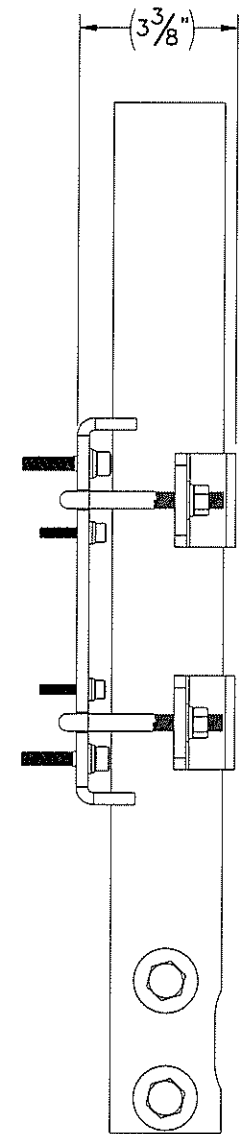
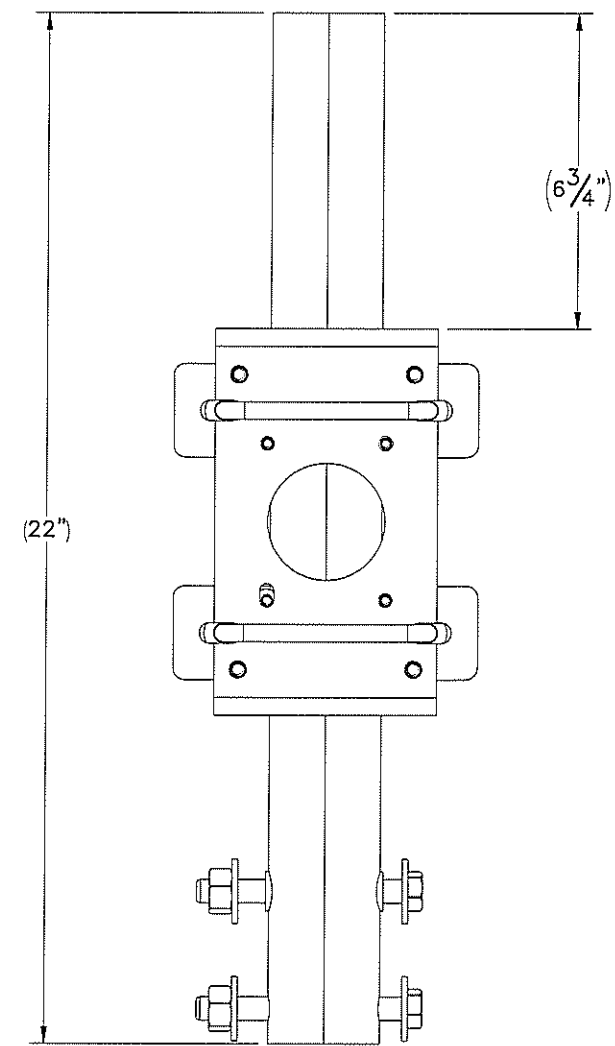
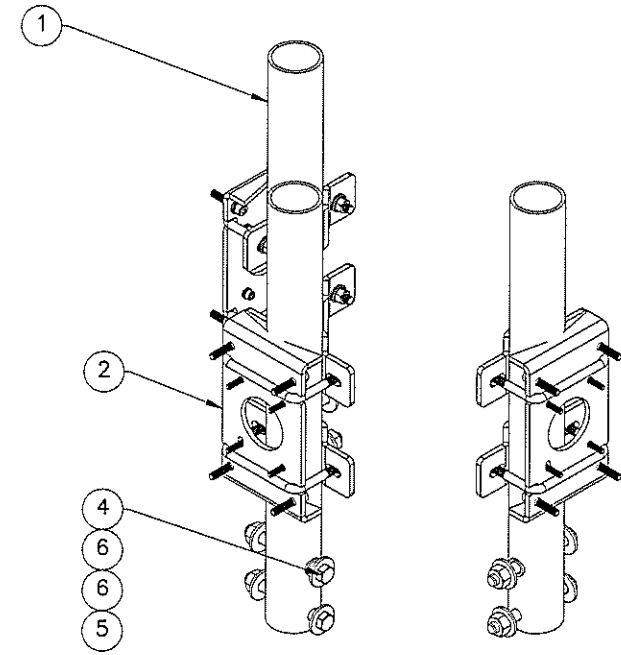
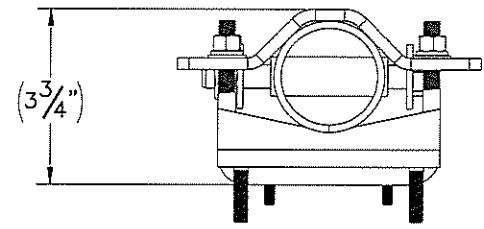


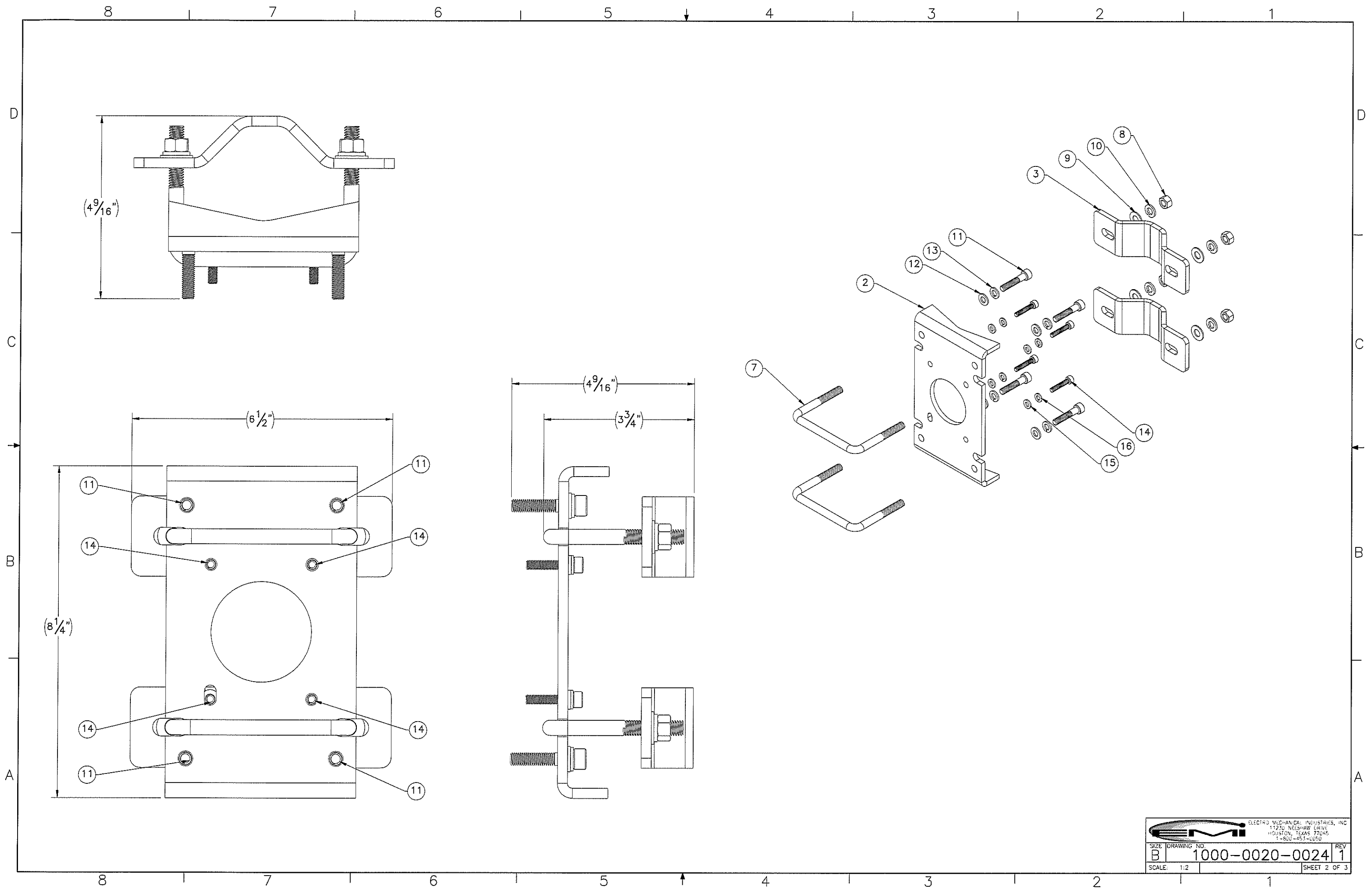
THE INFORMATION CONTAINED IN THIS DRAWING IS THE SOLE PROPERTY OF ELECTRO MECHANICAL INDUSTRIES, INC. ANY REPRODUCTION IN PART OR WHOLE WITHOUT THE WRITTEN PERMISSION OF ELECTRO MECHANICAL IND., IS PROHIBITED.

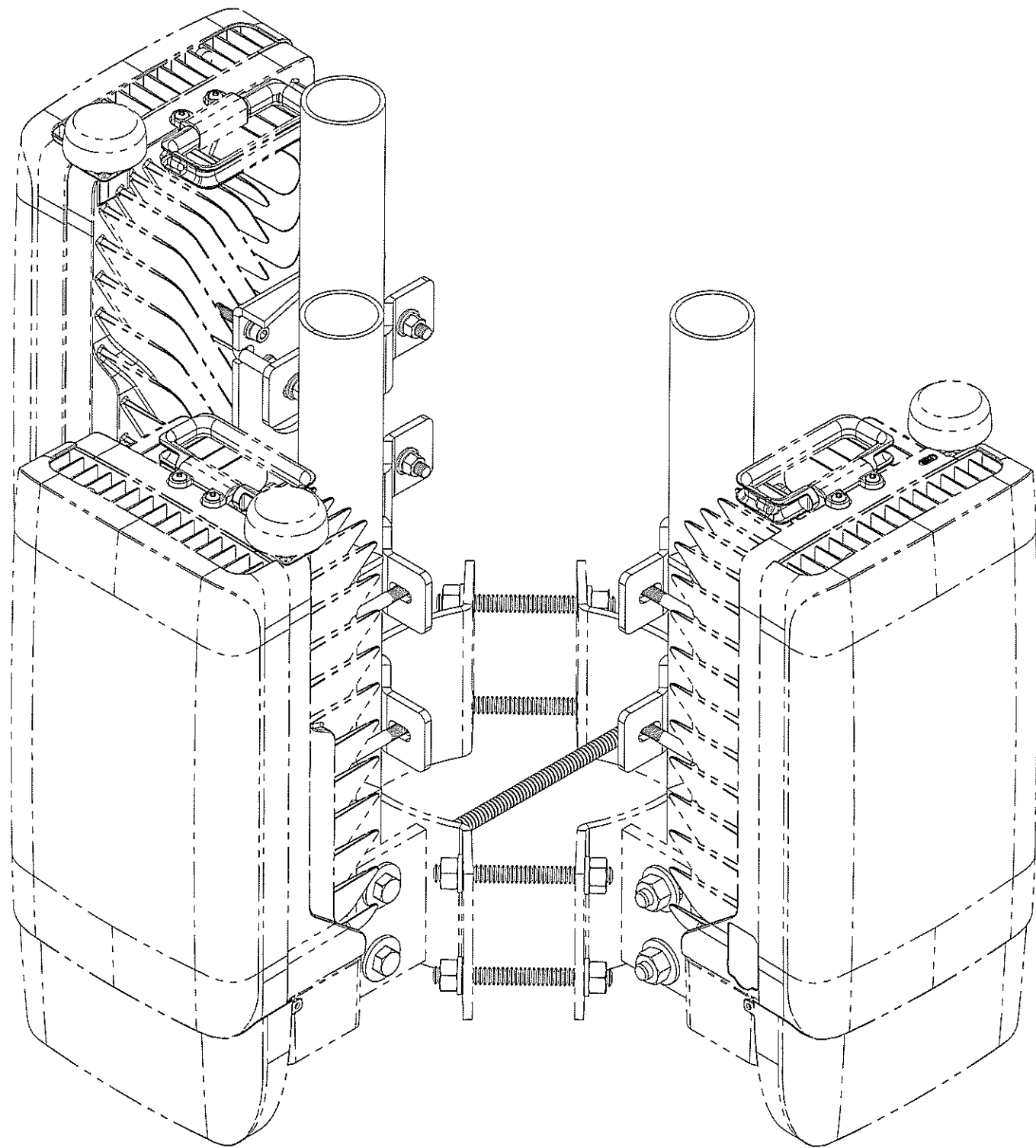
REVISIONS					
REV.	DCN #	DESCRIPTION	DATE	BY	APPROVED
1	DCN00618	UPDATED PER CUSTOMER REQUEST	02.19.2019	RLWjr	JPB



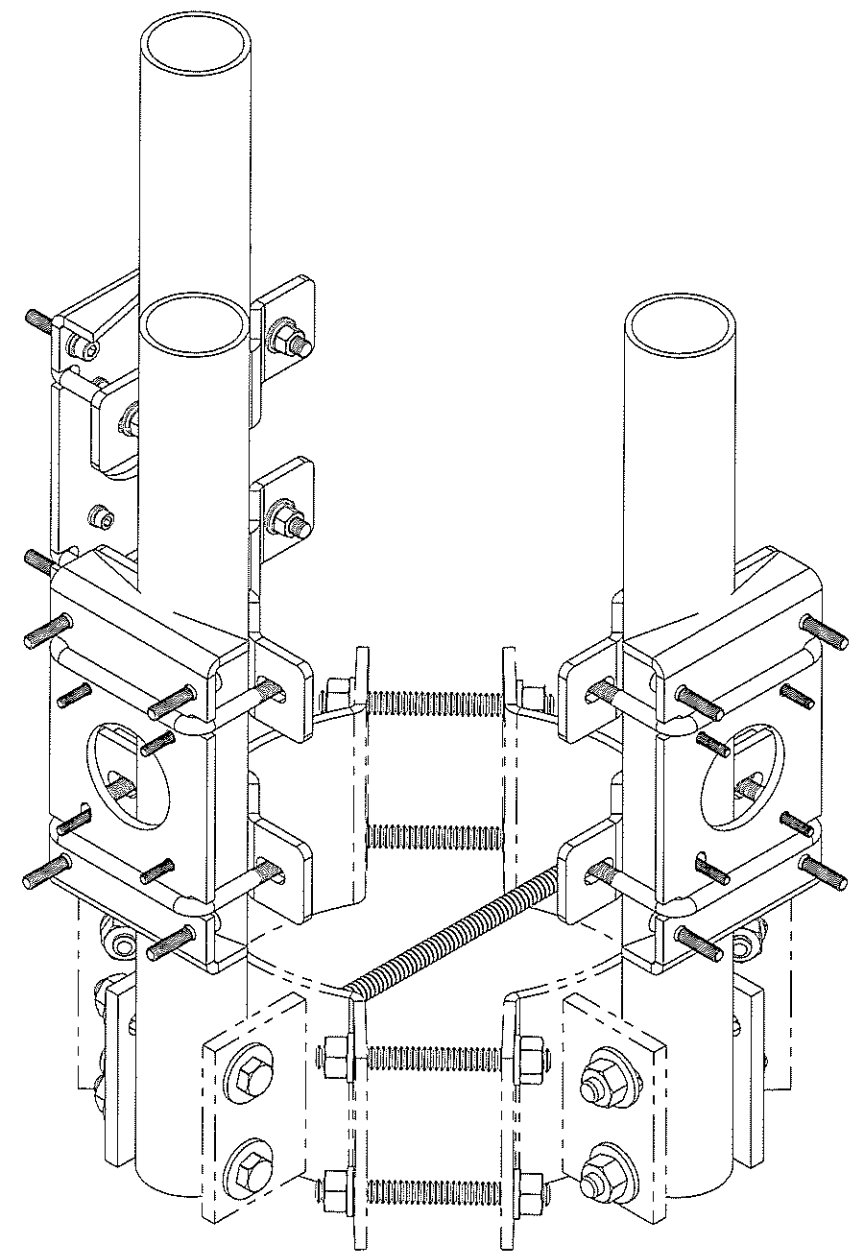
ITEM NO.	QTY REQD	PART NUMBER	DESCRIPTION	LENGTH	WEIGHT
1	3	W-001-031	CPE POLE MOUNT		6.7
2	3	P-002-493	ANTENNA BRACKET PLATE	3 3/4"	2.7
3	6	P-002-730	BACK BRACKET		1
4	6	002-0BG-0011	BOLT, .500-13UNC X 4.5" LG, ASTM A325, GALV.		0.29
5	6	002-0NG-0010	NUT, HEX, .500-13UNC, GR 2H, GALV		0.06
6	12	002-0FW-G020	WASHER, FLAT, .500", USS, GALV		0.04
7	6	002-00U-G017	SQ. U-BOLT, .375"-16 X 4" I.D. X 3" LG., GALV.		0.315
8	12	002-0NG-0018	NUT, HEX, .375-16UNC, GR 5, GALV		0.02
9	12	002-0FW-G005	WASHER, FLAT, .375, GALV		0.01
10	12	002-0LW-G005	WASHER, SPLIT LOCK, .375 INCH, GALV		0.01
11	12	002-0SS-M005	BOLT, M8 X 40MM, 18-8 SST		2.65
12	12	002-0FW-SM03	WASHER, M8, 18-8 SST		0.26
13	12	002-0LW-SM03	WASHER, SPLIT-LOCK M8, 18-8 SST		0.00
14	12	002-0SS-M004	BOLT, M6 X 30MM, 18-8 SST		1.06
15	12	002-0FW-SM04	WASHER, M6, 18-8 SST		0.15
16	12	002-0LW-SM02	WASHER, SPLIT-LOCK M6, 18-8 SST		0.00

SURFACE FINISH: UNLESS OTHERWISE SPECIFIED		UNLESS OTHERWISE SPECIFIED DIMENSIONS ARE IN INCHES		APPROVALS		DATE		ELECTRO MECHANICAL INDUSTRIES, INC. 11230 HEESBRAW DRIVE HOUSTON, TEXAS 77065 1-800-453-0050	
MATERIAL: SEE PARTS LIST		TOLERANCES		DRAWN: P. GUIERREZ		10.01.18		TITLE: CPE POLE MOUNT OPTION 1 ASSEMBLY	
THIRD ANGLE PROJECTION		.0000 ± .005		CHECKED: J. BREEN		10.02.2018		ENGINEER/DESIGNER: J. BREEN	
NEXT ASSY: USED ON		FRACTIONS: ± 1/16		PRODUCTION: JKS		10.02.2018		SIZE: B	
APPLICATIONS		ANGLES: ± .25°		DRAWING NO.: 1000-0020-0024		REV: 1		SCALE: 1:1	
		HOLES: ± 1/32		WEIGHT: 39 lbs.		SHEET 1 OF 3			
		BURNED: ± 1/32							





TYPICAL FIELD INSTALLATION VIEW  
WITH RADIOS  
REFERENCE ONLY



SHOWN ASSEMBLED WITH  
1000-0020-0017 (COLLAR CLAMP)  
REFERENCE ONLY