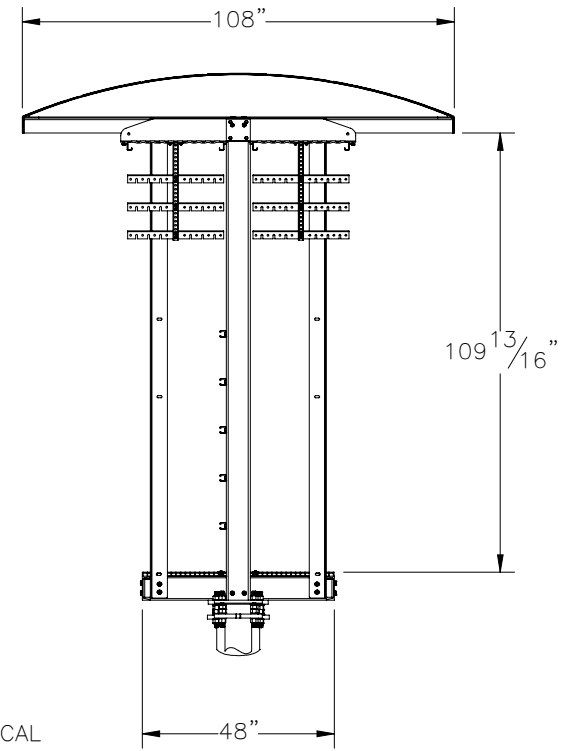
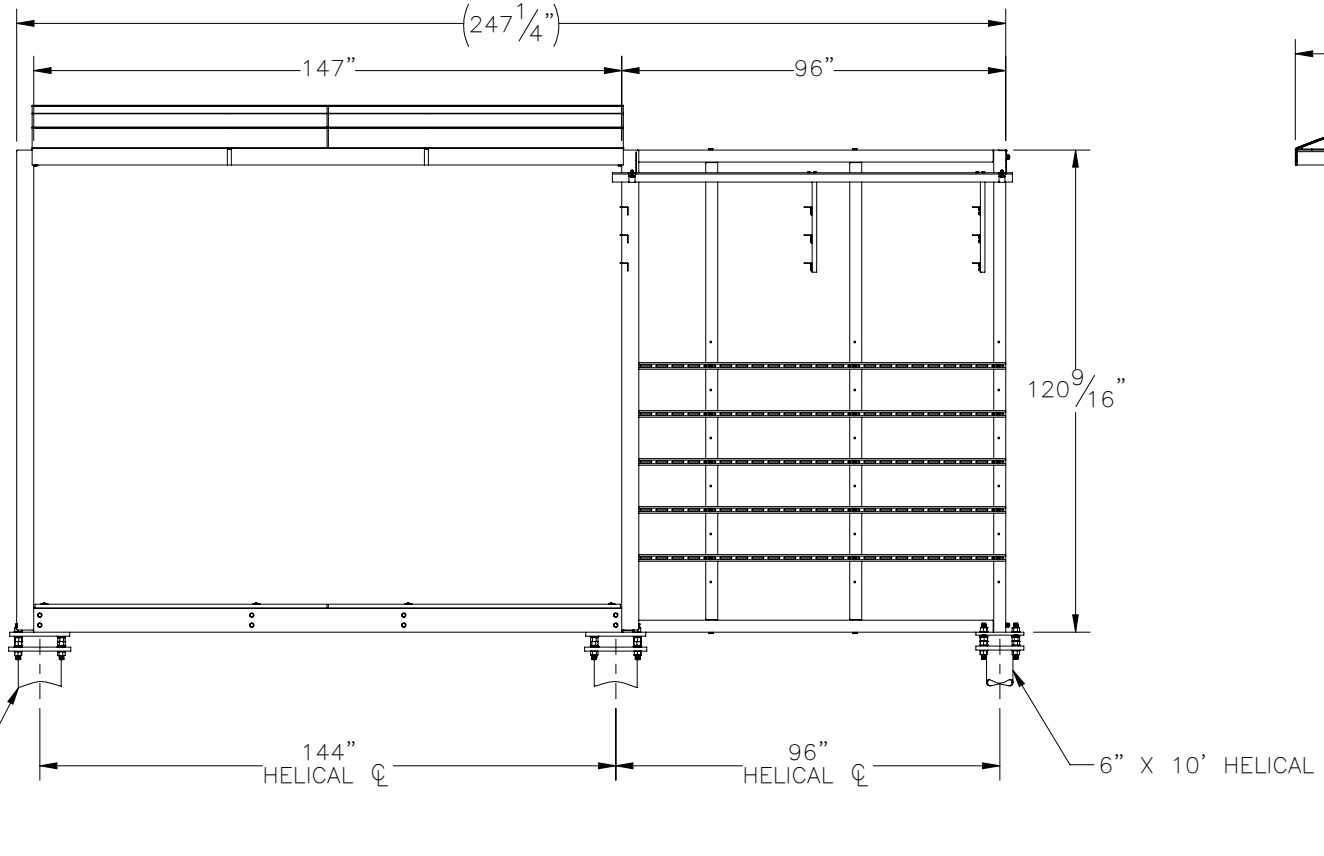
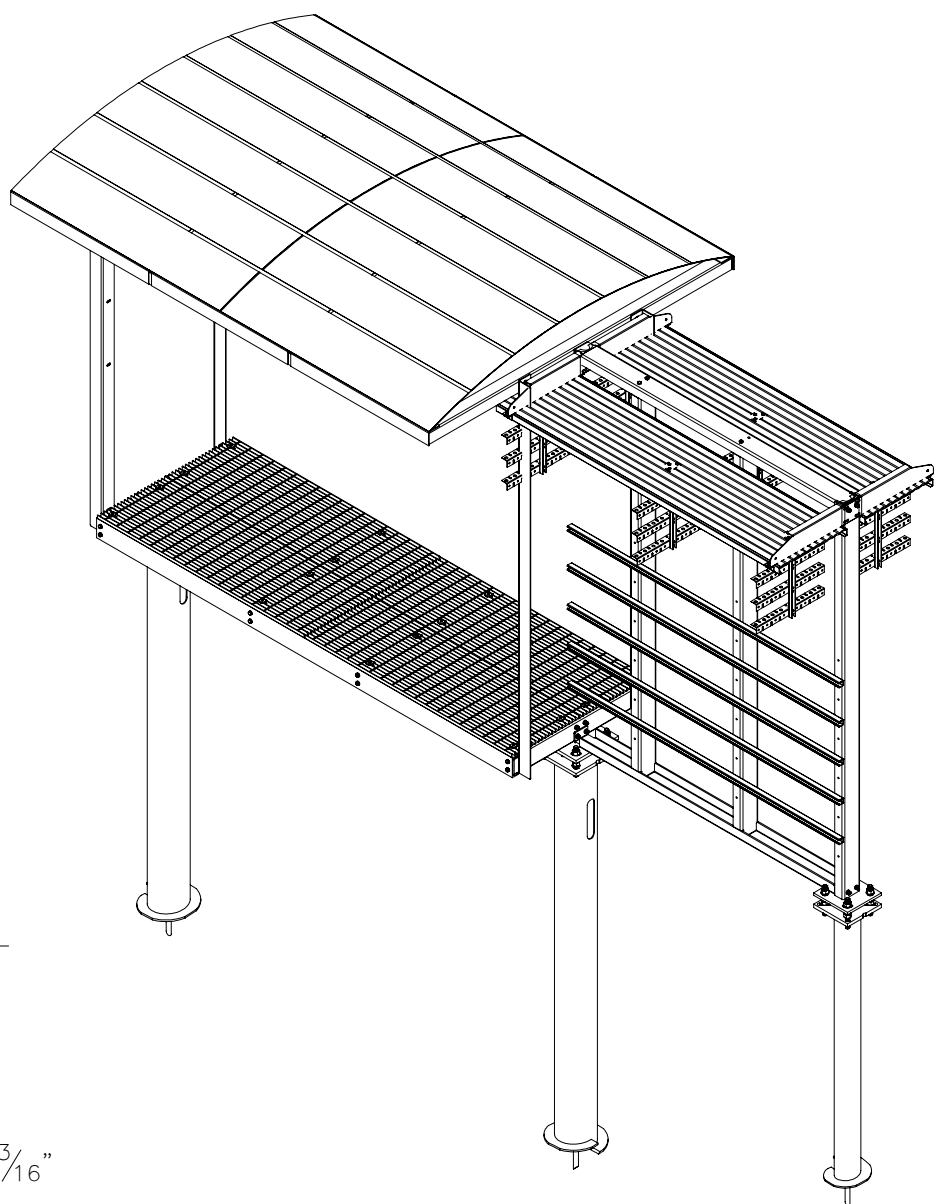
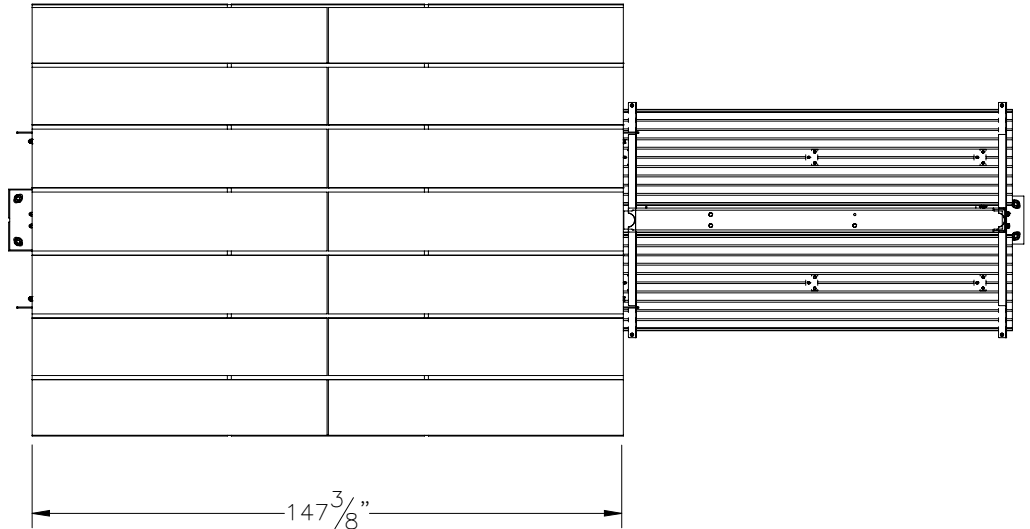

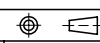


THE INFORMATION CONTAINED IN THIS DRAWING IS THE SOLE PROPERTY OF ELECTRO MECHANICAL INDUSTRIES, INC. ANY REPRODUCTION IN PART OR WHOLE WITHOUT THE WRITTEN PERMISSION OF ELECTRO MECHANICAL IND., IS PROHIBITED.



SALES DRAWING

SURFACE FINISH <input checked="" type="checkbox"/> UNLESS OTHERWISE SPECIFIED		UNLESS OTHERWISE SPECIFIED DIMENSIONS ARE IN INCHES		APPROVALS	DATE	 ELECTRO MECHANICAL INDUSTRIES, INC. 11230 NEESESHAW DRIVE HOUSTON, TEXAS 77065 1-800-453-0050
MATERIAL	SEE PARTS LIST	TOLERANCES		DRAWN	09/22/2023	
THIRD ANGLE PROJECTION		.0	± .06	CHECKER		9' X 12'-9" CABINET SOLAR CANOPY W/ PLATFORM, H-FRAME, ICE BRIDGE
		.00	± .015	ENGINEER		
		.000	± .005	PRODUCTION		DRAWING NO.
NEXT ASSY	USED ON	FRACTIONS	± 1/16			1000-0010-0495
		ANGLES	± .25°			REV
		HOLES:				0
		DRILLED OR PUNCHED	+1/32			SCALE: 1:48
APPLICATIONS		BURNED	±1/32			WEIGHT: 4445.02 lbs.
						SHEET 1 OF 1