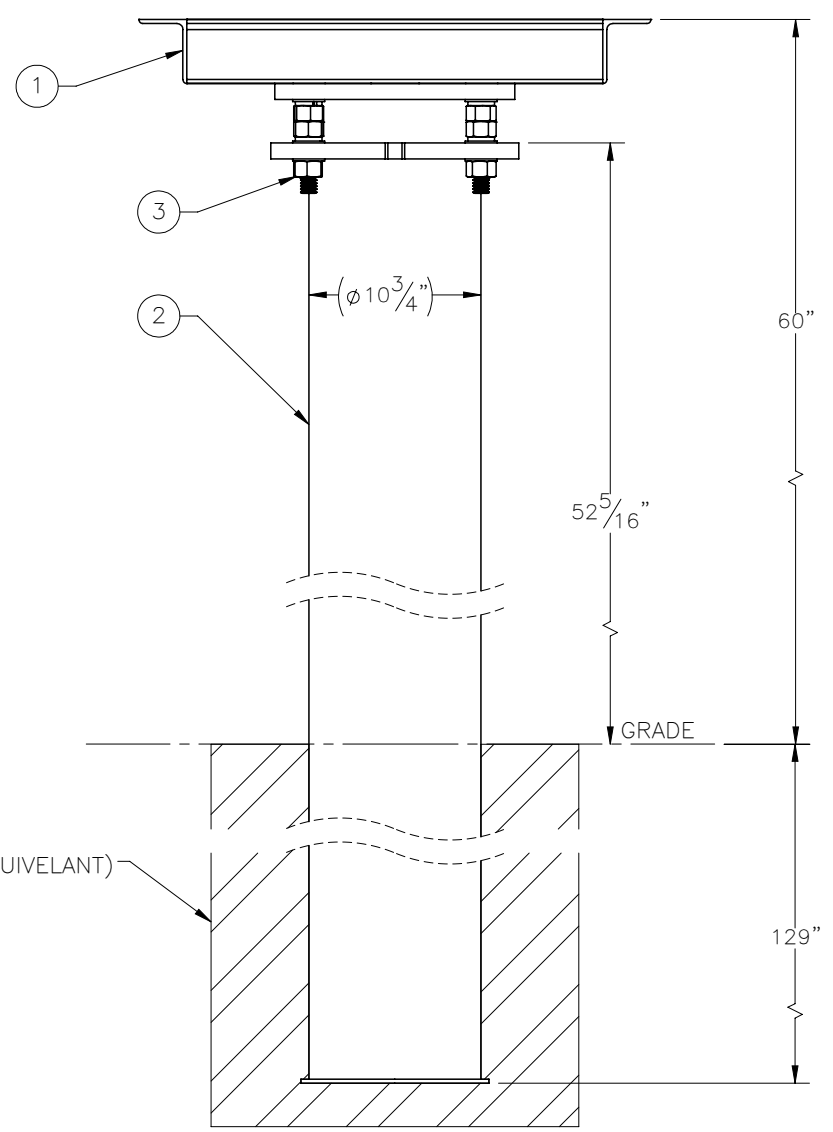
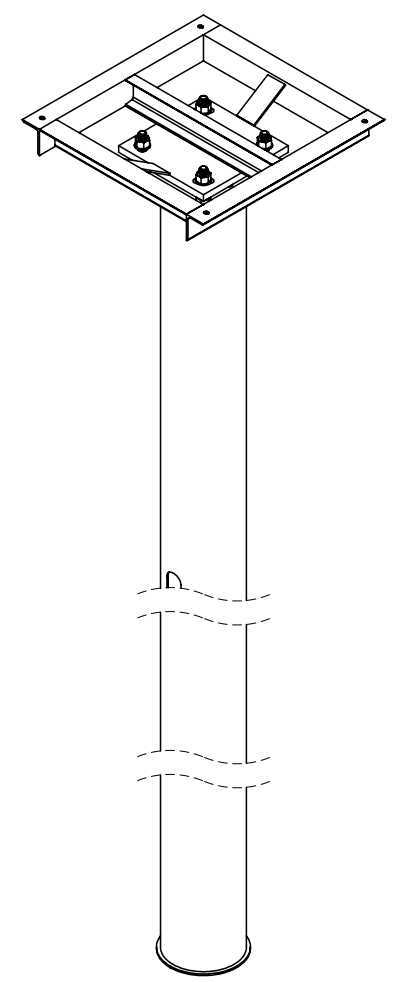
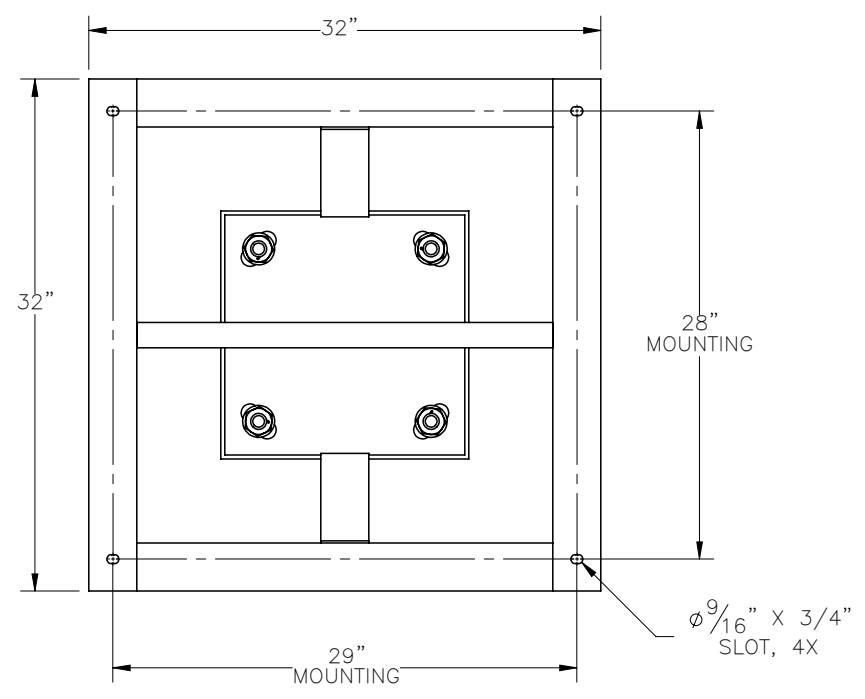

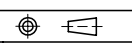


THE INFORMATION CONTAINED IN THIS DRAWING IS THE SOLE PROPERTY OF ELECTRO MECHANICAL INDUSTRIES, INC. ANY REPRODUCTION IN PART OR WHOLE WITHOUT THE WRITTEN PERMISSION OF ELECTRO MECHANICAL IND., IS PROHIBITED.

REVISIONS					
REV.	DCN #	DESCRIPTION	DATE	BY	APPROVED
1	01094	VISUALLY UPDATED W-001-603 AND UPDATED TO NEW EMI STANDARDS	11/23/2021	BLH	JPB



ITEM NO.	QTY REQD	PART NUMBER	DESCRIPTION	LENGTH	WEIGHT
1	1	W-001-603	FRAME WELDMENT		130.7
2	1	W-001-602	10" x 15", 1" BASE, 1" HDW - BURIED FOUNDATION WELDMENT		471.00
3	1	1000-0020-0077	QUAD MOUNT LEVELING HARDWARE KIT		15.2

SURFACE FINISH <input checked="" type="checkbox"/> UNLESS OTHERWISE SPECIFIED		UNLESS OTHERWISE SPECIFIED DIMENSIONS ARE IN INCHES		APPROVALS		DATE		 ELECTRO MECHANICAL INDUSTRIES, INC. 11230 NEESESHAW DRIVE HOUSTON, TEXAS 77065 1-800-453-0050	
MATERIAL SEE PARTS LIST		TOLERANCES		DRAWN		DATE			
THIRD ANGLE PROJECTION 		.0 ± .06 .00 ± .015 .000 ± .005		CHECKER		DATE			
NEXT ASSY		FRACTIONS ± 1/16 ANGLES ± .25° HOLES: DRILLED OR PUNCHED ± 1/32 BURNED ± 1/32		ENGINEER		DATE			
APPLICATIONS				PRODUCTION		DATE		TITLE: CABINET FRAME PLATFORM KIT W/ BURIED FOUNDATION	
				J. SUNDERLAND		9/18/2019		SIZE B DRAWING NO. 1000-0010-0193 REV 1	
								SCALE: 1:12 WEIGHT: 6.17 lbs. SHEET 1 OF 1	