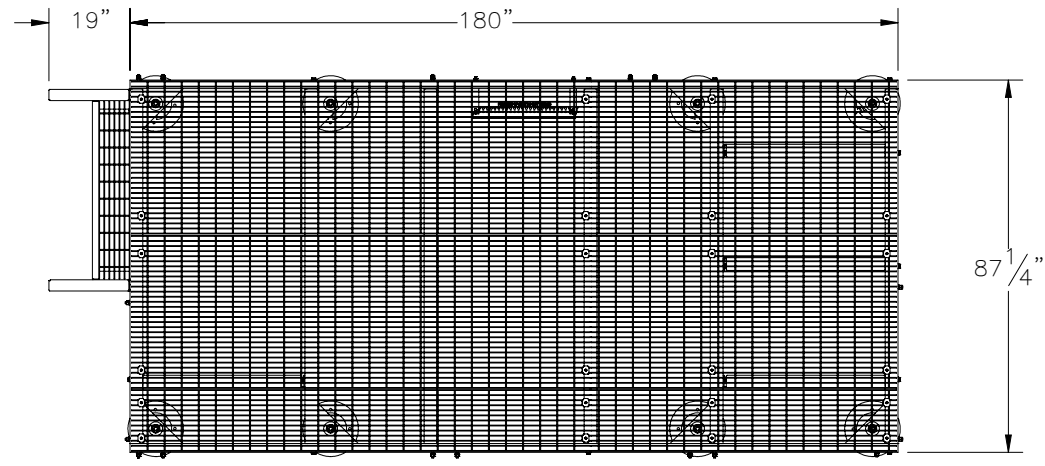
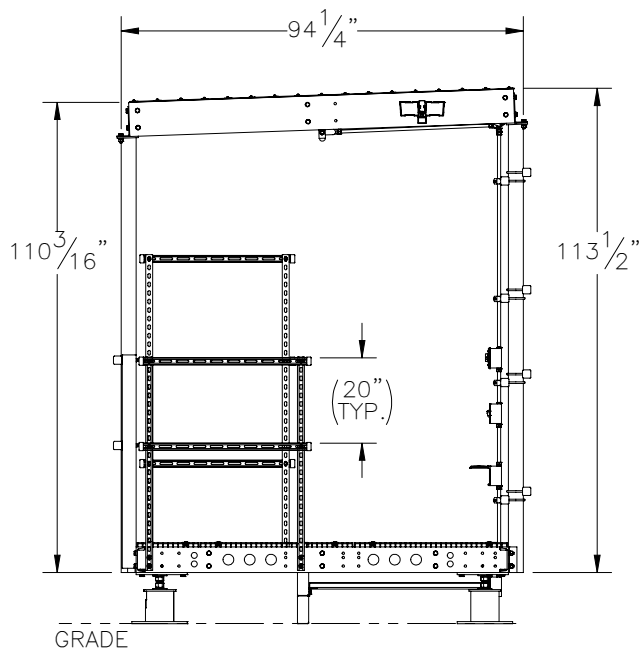
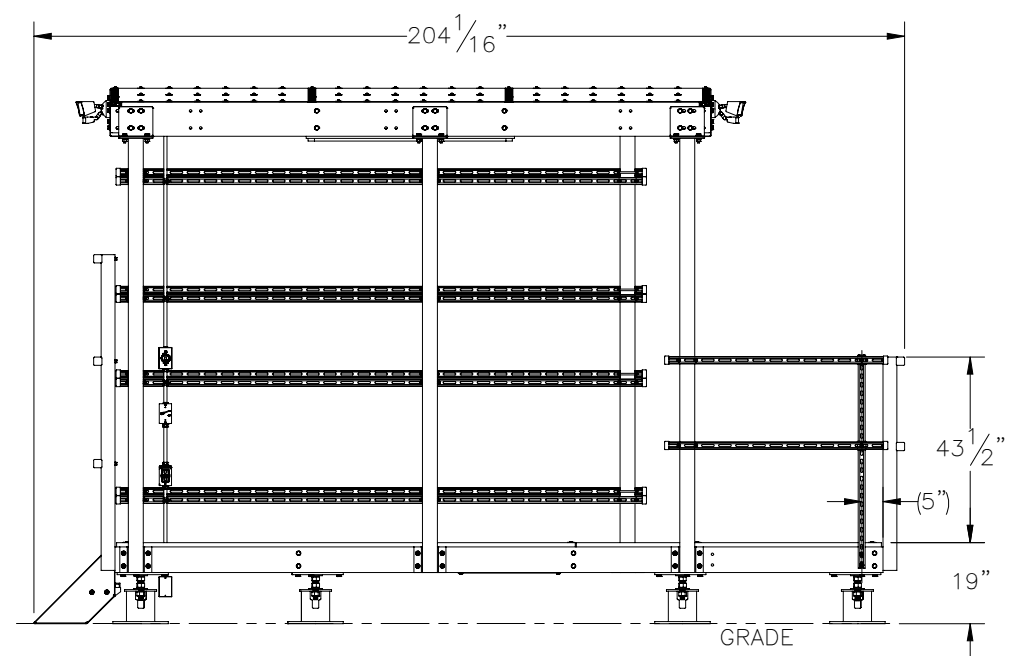


THE INFORMATION CONTAINED IN THIS DRAWING IS THE SOLE PROPERTY OF ELECTRO MECHANICAL INDUSTRIES, INC. ANY REPRODUCTION IN PART OR WHOLE WITHOUT THE WRITTEN PERMISSION OF ELECTRO MECHANICAL IND., IS PROHIBITED.


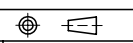
REVISIONS					
REV.	DCN #	DESCRIPTION	DATE	BY	APPROVED
22	DCN01265	UPDATED WITH LOWER LEVEL CHANGES	10/06/2023	FJB	JPB



CANOPY REMOVED



ITEM NO.	QTY REQD	PART NUMBER	DESCRIPTION	LENGTH	WEIGHT
1	1	1001-0020-0056	EMERSON BOLT TOGETHER PLATFORM 87" X 180"		1600.7
2	1	1001-0030-0030	BOLT TOGETHER CANOPY W., EXPANDED METAL ROOF 140.875" X 87.1875"		1291.5
3	1	1003-0020-0002	1 TREAD STAIR ASS'Y (42" WIDE)		55.4
4	3	P-006-282	VERT. HANDRAIL, UNISTRUT	50"	12.2
5	3	P-006-283	SHORT SIDE MOUNTING RAIL, UNISTRUT	36"	4.1
6	8	P-006-284	LONG SIDE MOUNTING RAIL, UNISTRUT	124"	14.2
7	2	P-006-286	LONG SIDE HANDRAIL, UNISTRUT	52"	6.0
8	2	P-006-285	SHORT SIDE HANDRAIL, UNISTRUT	40"	4.6
9	2	P-006-281	VERT. MOUNTING RAIL, UNISTRUT	74"	18.0
10	1	1000-0000-0119	ELECTRICAL KIT		20.9
11	26	002-00U-G046	U-BOLT, .375-16 X 1.75 THD LNG., 3.625 I.D X 5.25 HT, GALV		0.052
12	12	002-0BG-0258	HB, .375-16 X 4.50 LG., PT X 1.00, GR. 5, HDG	4.50	0.159
13	76	002-0FW-G036	WASHER, FLAT, .375, GALV, SAE		0.01
14	64	002-0LW-G005	WASHER, SPLIT LOCK, .375, GALV		0.01
15	64	002-0NG-0018	NUT, HEX, .375-16UNC, GR 5, GALV		0.02
16	14	002-0BG-0012	HHB, .500-13 X 1.75 LG., PT X 1.00, A325, HDG	1.75	0.16
17	10	002-0BG-0010	HHB, .500-13 X 1.50 LG., PT X 1.00, A325, HDG	1.50	0.14
18	2	002-0SW-H001	WASHER, SQUARE, .50" ID X 2" X .25"		0.27
19	48	002-0FW-G002	FW, .50, F436, HDG		0.02
20	24	002-0LW-G002	WASHER, SPLIT LOCK, .500", GALV		0.01
21	24	002-0NG-0010	NUT, HEX, .500-13UNC, GR 2H, GALV		0.06
22	30	309-000-0008	STRUT CHANNEL CAP 1.625" X 1.625"		0.05
23	1	1000-0000-0075	GROUND BAR KIT		0.00
24	8	A-000-250	CORNER FOOT MOUNT ASSY, 2 LEVELING WASHERS		14.1
25	8	1008-0010-0015	8" FOOT AND HARDWARE ASSY., 1" HARDWARE		35.1

SURFACE FINISH <input checked="" type="checkbox"/> UNLESS OTHERWISE SPECIFIED		UNLESS OTHERWISE SPECIFIED DIMENSIONS ARE IN INCHES		APPROVALS		DATE		 ELECTRO MECHANICAL INDUSTRIES, INC. 11250 NEESESHAW DRIVE HOUSTON, TEXAS 77065 1-800-453-0050	
MATERIAL SEE PARTS LIST		TOLERANCES		DRAWN J. CRITELLI		12/18/2018			
THIRD ANGLE PROJECTION 		FRACTIONS ± 1/16		CHECKER J. BREEN		12/21/2018		TITLE: 87"X180" BOLT TOGETHER PLATFORM GRAVITY MOUNT W EXPANDED METAL CANOPY	
NEXT ASSY USED ON		ANGLES ± .25°		ENGINEER J. BREEN		12/21/2018			
APPLICATIONS		HOLES: DRILLED OR PUNCHED ± 1/32		PRODUCTION J. SUNDERLAND		12/26/2018		SIZE B DRAWING NO. 1000-0010-0131 REV 22	
		BURNED ± 1/32						SCALE: 1:45 WEIGHT: 3604.9 lbs. SHEET 1 OF 4	

CANOPY TOP HIDDEN FOR CLARITY

UNISTRUT/PIPE
U-BOLT CONNECTION
DETAIL
TYP

UNISTRUT CONNECTION
W/ 4.5" BOLTS
DETAIL
TYP

UNISTRUT TO FRAME
CONNECTION
THIS POST ONLY
W/ 1 SPACER & 4.5" BOLT
DETAIL
2X


DETAIL A
GRAVITY FOOT DETAIL TYP.
AND UNISTRUT TO
FRAME CONNECTION

CONNECTS USING
SUBASSY HARDWARE

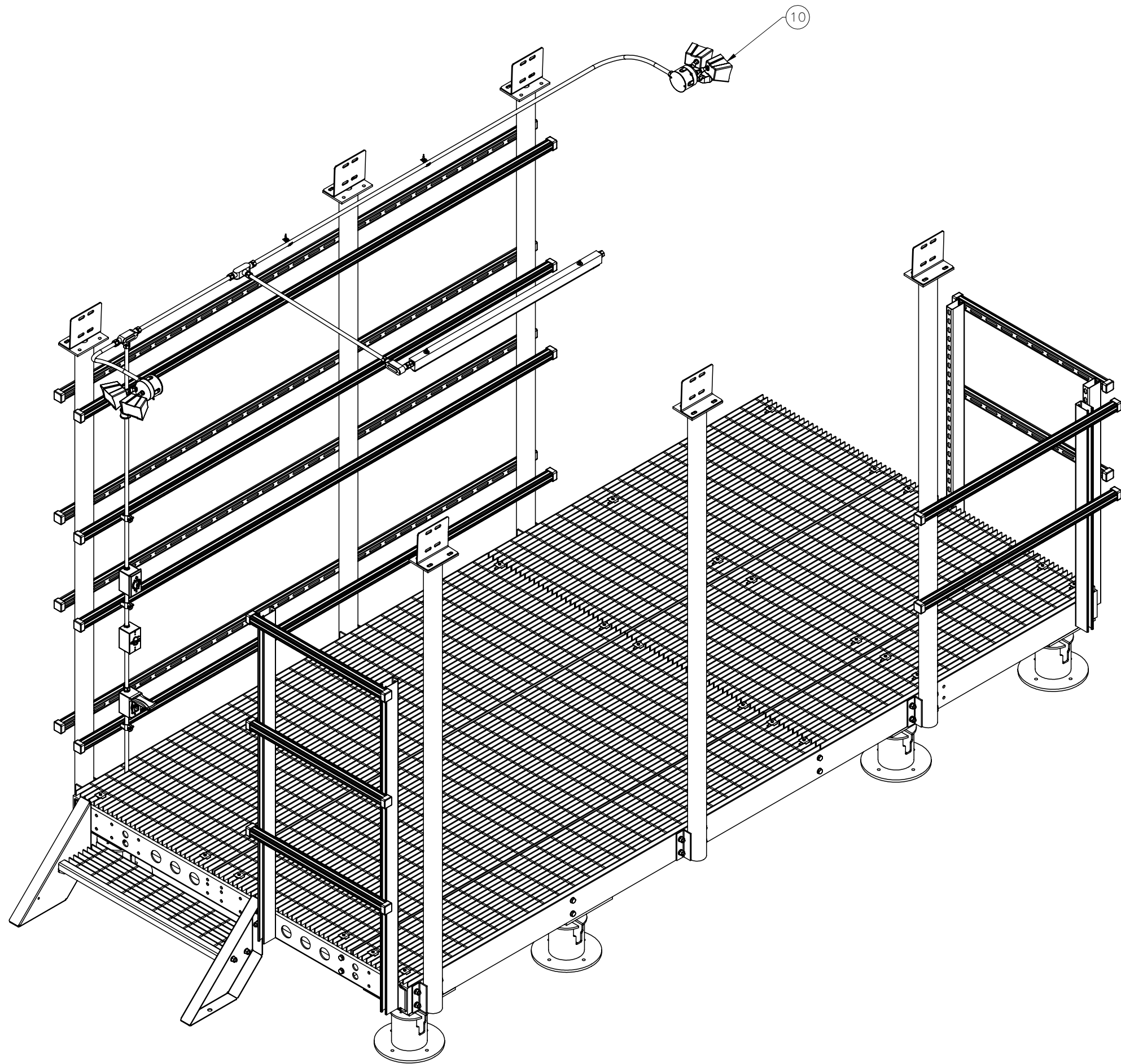
BOLTS ON THE CANOPY CORNERS
THROUGH THE CROSS BEAMS ARE
PROVIDED WITHIN SUBASSY

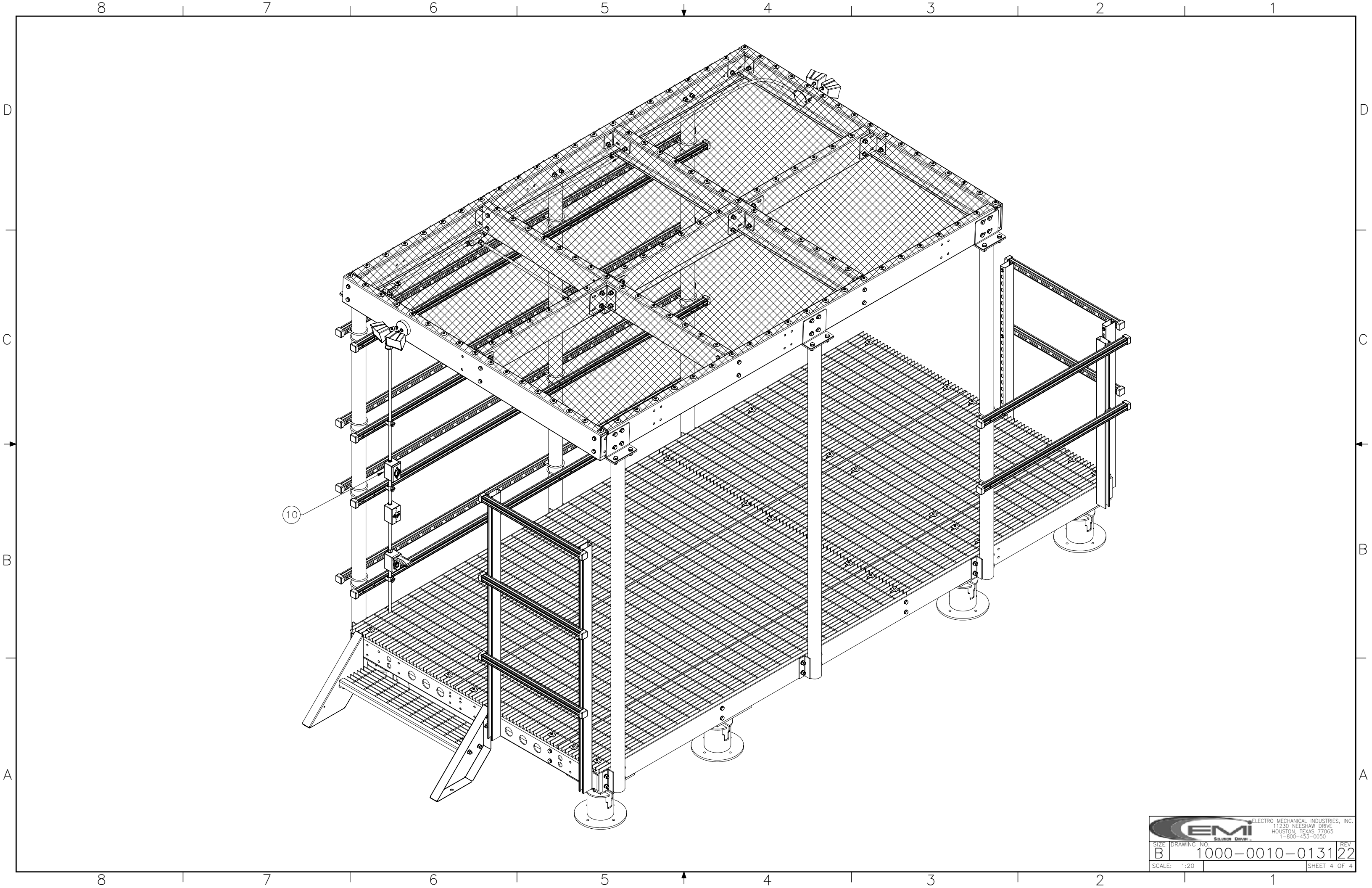
POST TO FRAME
CONNECTION
DETAIL
TYP


UNISTRUT CONNECTION
DETAIL

		ELECTRO MECHANICAL INDUSTRIES, INC. 11230 NEESHAW DRIVE HOUSTON, TEXAS 77065 1-800-453-0050	
SIZE	DRAWING NO.	REV.	
B	1000-0010-0131	22	
SCALE: 1:25			SHEET 2 OF 4

CANOPY TOP HIDDEN FOR CLARITY





		ELECTRO MECHANICAL INDUSTRIES, INC. 11230 NEESHAW DRIVE HOUSTON, TEXAS 77065 1-800-453-0050	
SIZE	DRAWING NO.	REV.	
B	1000-0010-0131	22	
SCALE: 1:20		SHEET 4 OF 4	